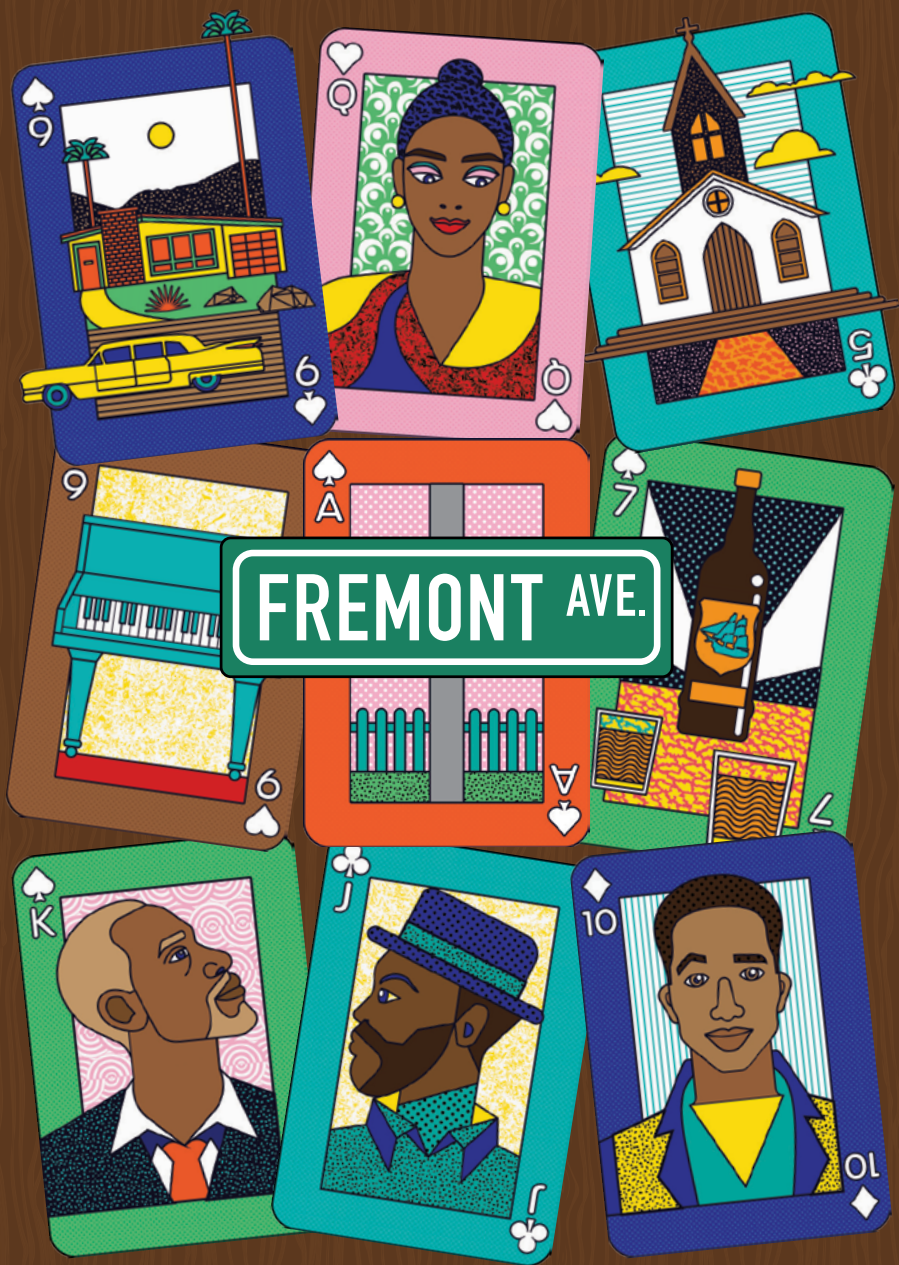


2025/26 SEASON



OCTOBER 8 – NOVEMBER 23



2025/26 SEASON

# Coming Up Next

**STEP AFRIKA!**

## MAGICAL MUSICAL HOLIDAY STEP SHOW

**DC'S FAVORITE  
HOLIDAY TRADITION!**

**DECEMBER 5 – DECEMBER 21**

[ARENASTAGE.ORG/STEP](http://ARENASTAGE.ORG/STEP)

**THE STAKES ARE HIGH, THE JAZZ IS  
HOTTER, AND AMBITION NEVER  
SOUNDED SO GOOD.**

**JANUARY 30 – MARCH 15**

[ARENASTAGE.ORG/JOEY](http://ARENASTAGE.ORG/JOEY)

Music by **Richard Rodgers**

Lyrics by **Lorenz Hart**

Book by **Richard LaGravenese**

Based on John O'Hara's 'Pal Joey' stories published in *The New Yorker*

Choreographed by **Savion Glover**

Co-Directed by **Tony Goldwyn** and **Savion Glover**



## INHERIT THE WIND



**THE DEBATE THAT  
SHOOK THE NATION.**

**FEBRUARY 27 – APRIL 5**

[ARENASTAGE.ORG/INHERIT](http://ARENASTAGE.ORG/INHERIT)

By **Jerome Lawrence** and **Robert E. Lee**

Directed by **Ryan Guzzo Purcell**



**WHEN A MIDLIFE CRISIS MEANS  
ROOMING WITH NUNS.**

**MARCH 27 – MAY 3**

[ARENASTAGE.ORG/GOODDAY](http://ARENASTAGE.ORG/GOODDAY)

By **Lameece Issaq**  
Directed by **Lee Sunday Evans**



**THEY CAME TO TEST A THEORY—  
NOW REALITY IS TESTING THEM.**

**MAY 6 – JUNE 14**

[ARENASTAGE.ORG/MOTION](http://ARENASTAGE.ORG/MOTION)

By **Christopher Chen**  
Directed by **Hana S. Sharif**



**NO SCRUBS. JUST LEGENDS.**

**JUNE 12 – AUGUST 9**

[ARENASTAGE.ORG/TLC](http://ARENASTAGE.ORG/TLC)

Based on the Music Performed and Recorded by **TLC**  
Written and Directed by **Kwame Kwei-Armah**  
Choreographed by **Chloe O. Davis**

***Bold Stories  
Real Theater***

[ARENASTAGE.ORG/75](http://ARENASTAGE.ORG/75)





DAZZLING ALFRESCO DINING WITH STUNNING  
**POTOMAC VIEWS**



*Philippe*  
by Philippe Chow



Official Restaurant Partner of Arena Stage



Reservations

635 Wharf St SW, Washington, DC 20024 | 202.601.8888 | [PhilippeChow.com](http://PhilippeChow.com)



# TABLE OF CONTENTS

- 7 Artistically Speaking
- 9 From the Executive Producer
- 10 Dramaturgy Note
- 13 Title Page
- 14 Setting/Cast/For This Production
- 15 Special Thanks
- 17 Bios — Cast
- 20 Bios — Creative
- 24 Bios — Arena Stage Leadership
- 25 Board of Trustees/Young Patrons Board
- 27 Thank You — Full Circle Society
- 28 Thank You — Individual Donors
- 33 Thank You — Institutional Donors
- 34 Theater Staff

## ARENA STAGE

1101 Sixth Street SW  
Washington, DC 20024-2461  
ADMINISTRATION 202-554-9066  
SALES OFFICE 202-488-3300  
[arenastage.org](http://arenastage.org)

©2025 Arena Stage.

All editorial and advertising material is fully protected and must not be reproduced in any manner without written permission.

*Fremont Ave.* program book published October 8, 2025.

## PROGRAM BOOK STAFF

Ashton Beck,  
Director of Marketing &  
Communications

Ryan Impagliazzo,  
Associate Director of Marketing &  
Communications

Jenny Hwang,  
Senior Graphic Designer

Kristopher Ingle,  
Graphic Designer



The cast of *Fremont Ave.* Photo by Ambe J. Photography.



WIFI NETWORK:

**ArenaGuest**

PASSWORD:

**arenaguest**

## SHARE YOUR EXPERIENCE!

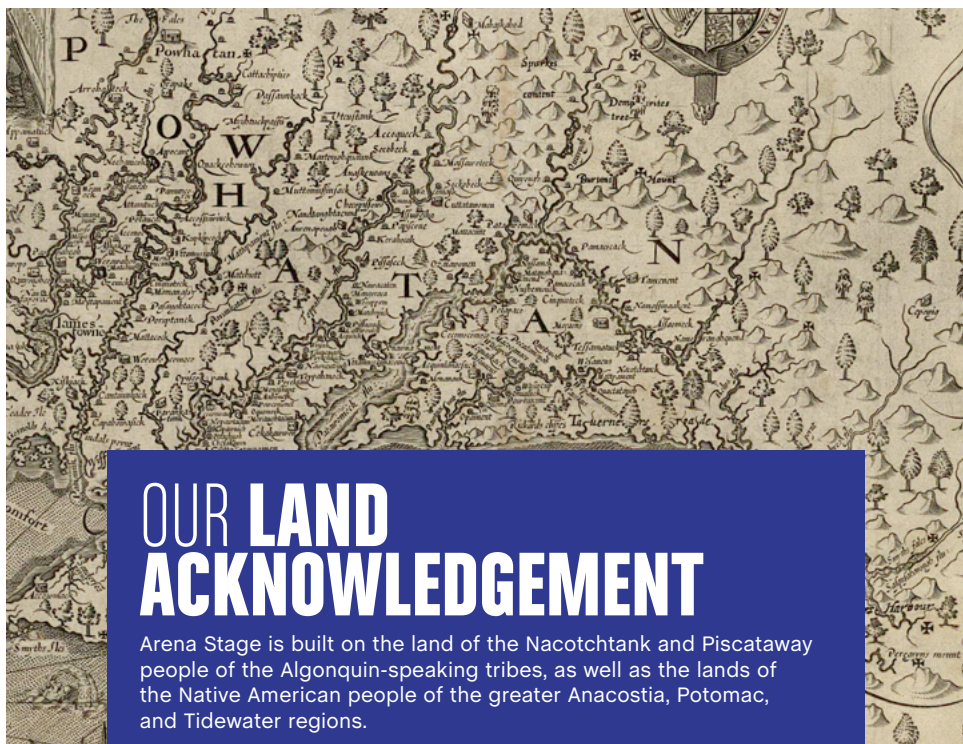


@arenastage

#ArenaStage #ArenaStageDC #ArenaFremont

# ARENA STAGE'S MISSION

Arena Stage is the voice of American theater resident in our nation's capital. Focused on American artists, our productions are innovative and representative of stories from across the country. We nurture new plays and reimagine classics. We celebrate our democracy and diversity through a multitude of voices in our productions and community engagement programs to inspire people to action. We produce all that is passionate, exuberant, profound, entertaining, deep and dangerous in the American spirit.



## OUR LAND ACKNOWLEDGEMENT

Arena Stage is built on the land of the Nacotchtank and Piscataway people of the Algonquin-speaking tribes, as well as the lands of the Native American people of the greater Anacostia, Potomac, and Tidewater regions.



## ARTISTICALLY SPEAKING

**"We are each other's harvest; we are each other's business; we are each other's magnitude and bond."**

— Gwendolyn Brooks

*Family is messy. It's loud. And it's always home.*

In *Fremont Ave.*, playwright Reggie D. White brilliantly places us inside the beating heart of an African American family across three generations, as they wrestle with lifetimes of hopes and dreams deferred. What began as conversations with his own elders has grown into a world premiere that is as tender as it is unflinching, as vulnerable as it is hilarious. Within the Plique family, we see George, his stepson Robert, and his grandson Joseph volley between silence and confession, pride and shame, anger and love. Their words crack like pinballs, ricocheting through decades of change—1968, the 1990s, to today—constantly interrogating what it means to be a man, a father, a son, and sometimes a stranger in your own house.

The beauty of Reggie's writing lies in its specificity. His ear is tuned to the cadences of Black family life—the rhythms, the jokes, the silences that stretch just a beat too long. And yet the questions he raises reverberate far beyond a single household, resonating with the universal human experience. Under Lili-Anne Brown's fearless direction, this ensemble doesn't tiptoe through the truth. They swing at it. They tease it. They wrestle it into the light. What emerges is a story that is laugh-out-loud funny and deeply, sometimes painfully true. A love letter to Black men, *Fremont Ave.* has particular and powerful resonance in Washington, DC. Here, where resilience is stitched into the fabric of our communities.

New plays like *Fremont Ave.* are the lifeblood of the American theater. They remind us where we are, reflect where we've been, and gesture toward where we're going. Reggie D. White's voice is a gift to all of us, offering a depiction of buoyant, complex, fully embodied men, whose humor and vulnerability are revolutionary acts.

In this story, we hear the echoes of our own lives: the arguments that went too far, the laughter that pulled us back, the silences we carry in fractured places. My great hope is that *Fremont Ave.* doesn't give you tidy answers, but instead leaves you with a question worth carrying into the arms of someone you love. Because family, like theater, has its own way of catching us off guard. Sometimes it breaks us open, and sometimes it heals us with nothing more than the truth and a well-timed, "pass the damn cards."

Blessings,

**Hana S. Sharif**  
Artistic Director



Arena Stage  
Washington, DC



**Proudly Shaping  
the Local Landscape**



## FROM THE EXECUTIVE PRODUCER

It is truly a wonderful happenstance to produce a premiere production of a playwright who also works in the offices at Arena Stage. Congratulations to Reggie D. White. Doubly wonderful is that this occurrence is in Arena's 75th Anniversary Season—truly a time to celebrate Arena's people.

If you are among the faithful who read all the program notes, you may recall that in celebration of Arena's 75th Anniversary Season, I am opening my door to shine a spotlight on the fabulous team behind me at Arena that are not often provided bios in programs like these. A few years ago, I started explaining the Artistic Director's job as *ambition* and my job as Executive Producer as *capacity*. This name of the partnership—ambition and capacity—continues in ways I didn't originally anticipate. Now my team of direct reports also bears the name Capacity Team.

Dealing the Capacity Team cards today is General Manager Alicia Sells. Alicia started as overhire, which means she was not full-time staff but rather an essential team member who stepped in when needed. From there she joined the production administrative and operations team as General Management Assistant. Before long, the title shift and responsibilities grew to Associate General Manager and now General Manager.

*In my time at Arena, I have had the privilege to wear many hats. Starting out as an overhire stage manager, I was introduced to the working world of Arena through the Event Rentals department in 2013 and then moved into Production with Christopher Durang's Tony-winning comedy, Vanya and Sonia and Masha and Spike, in 2015. As a stage manager, you hold the capacity of the show in your hands, ensuring the director's vision is executed within the needs of the actors, the ambition of the designers, and the expertise of the crew. When I eventually moved away from focusing solely on a show and into theater administration, I found myself applying this skill of appropriately allocating resources to meet various objectives to all aspects of my work, often taking the shape of budgeting, scheduling, and negotiating. At the end of the day, I see myself as a facilitator for both the wants and needs of the organization.*

*Understanding the ins-and-outs of a production itself has been invaluable experience for my work. I serve as the Arena representative with our union partners through the League of Resident Theatres (LORT), our field's collective bargaining entity with Actors' Equity Association (AEA), United Scenic Artists (USA), and Stage Directors and Choreographers Society (SDC), as well as the direct liaison with our local representatives of the American Federation of Musicians (AFM Local 161-710). With my production background, I understand both sides of labor negotiations, allowing me to build partnerships that support both the artists and the institution.*

*The General Management department handles the contracting for our artists along with addressing their associated requirements, like travel, housing, and benefits. My team does an excellent job ensuring that our artists onstage and backstage have what they need, within our resources, so they can deliver the high caliber of art our audiences have come to expect. I am proud of my team for putting the care of these talented artists at the forefront of our work.*

Thanks, Alicia. You definitely put your heart into everything you do.

Cheers,

Edgar Dobie  
Executive Producer  
President of the Corporation



# We Need Only Look to the Music

By Zoe Donovan

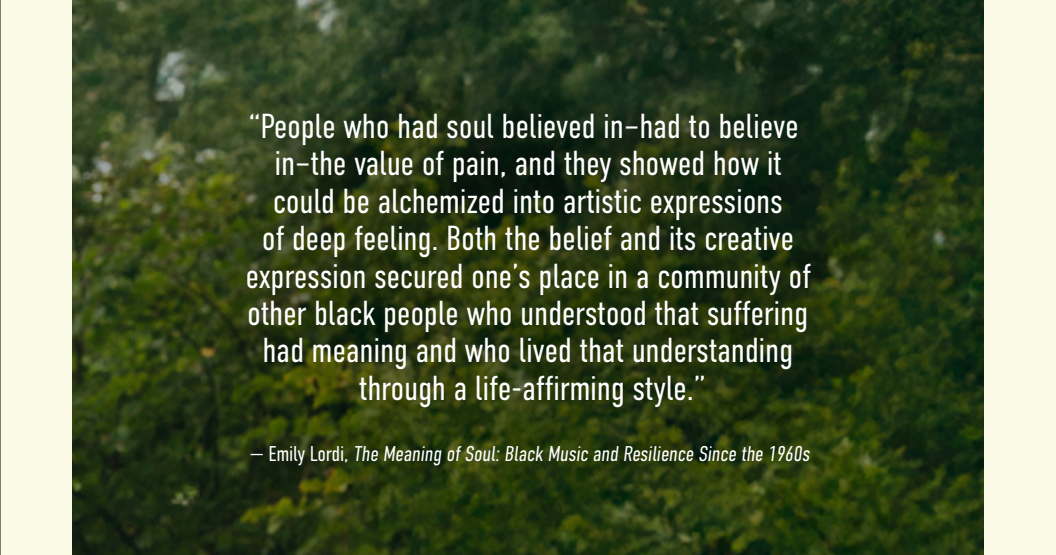
“The albums, folkways and commodores, bluebirds and even a genet or three, stared at us in formal expression. ‘This is the history. This is your history, my history’”

— Amiri Baraka, *Blues People*, Unabridged edition

*Fremont Ave.* is a powerfully honest depiction of what it means to build a family. It asks us to open our minds to the traditions, mindsets, and ways of connection that we intentionally and subconsciously pass on to children and grandchildren. Throughout this play, we watch each new branch of the Plique family tree wrestle with their dreams, relationships, and familial expectations. And with each obstacle, one cannot help but notice echoes of previous generations. These motifs are unequivocally felt as echoes because the Pliques are an inherently musical family. Beyond being raised by a music therapist and a woman with a keen ear for soul and gospel, music is deeply ingrained in the way they

communicate. For better and for worse, this is a house of excellent listeners, and their language is quick, rhythmic, and cuts to the truth (qualities that are undoubtedly cultivated by their tradition of sitting down to play Spades). Sometimes, though, the Pliques fail to speak musically and must rely on music to speak, whether that be to communicate their standards for the household, their feelings towards one another, or their forgiveness. *Fremont Ave.* centers on a far from perfect family, whose bad habits and growing pains follow them from one generation to the next. Their history, however, is sacred, and is carried by the music they love, the music they write, and the way they speak.





“People who had soul believed in—had to believe in—the value of pain, and they showed how it could be alchemized into artistic expressions of deep feeling. Both the belief and its creative expression secured one’s place in a community of other black people who understood that suffering had meaning and who lived that understanding through a life-affirming style.”

— Emily Lordi, *The Meaning of Soul: Black Music and Resilience Since the 1960s*

The concept of music as a carrier of history is far from new, especially for Black Americans. Perhaps the most credited scholar to honor this concept was W.E.B. Du Bois, whose book of essays, *The Souls of Black Folk*, was revolutionary for featuring, in each chapter, the lyrics and musical notation of spirituals sung by enslaved Africans. For Du Bois, it would’ve been remiss to exclude these songs in a collection of essays about the past, present, and future of Black people in the United States because these songs were vital for communication between enslaved Africans and the memorialization of their experiences. Sixty years later, Amiri Baraka would dive further into this concept in *Blues People*, which traced Black history and culture in America from spirituals to the blues to jazz. For Baraka, music and history run parallel to each other, and one must look to music for answers about history.

The Pliques of *Fremont Ave.* experience this kind of historical preservation on an interpersonal level, which, of course, is connected to a wider cultural dialogue.

Audrey and George, the matriarch and patriarch of the Pliques, meet during the height of soul music, which orchestrates their encounter. This moment is not only cherished for Audrey and George’s shared interest in the genre, but is amplified by the values of soul. In *The Meaning of Soul*, Emily Lordi partially identifies soul as a level of emotional depth that is earned from struggle. She further explains that the creative expression of soul music offered people the opportunity to connect rather than be isolated by their grief and pain. Audrey and George exemplify this kind of connection as two young people who are both guilty of using their insecurities and struggles to distance themselves from one another. Without music, George cannot articulate his feelings for Audrey in a way that is worthy of her trust. Through music, however, George and Audrey can reach an understanding of one another, and George’s feelings are revealed to be genuine. George is not the last man of the Plique family to rediscover how music can heal, and when reverberations of this moment and this music find their way back into the play, we need only look to the music for answers.



Bradley Gibson, Jerrika Hinton, Doug Brown, and Kevin Mambo for *Fremont Ave.* Photo by Ambe J. Photography.



ARENA STAGE

HANA S. SHARIF, ARTISTIC DIRECTOR | EDGAR DOBIE, EXECUTIVE PRODUCER

IN A CO-PRODUCTION WITH SOUTH COAST REPERTORY

PRESENTS THE WORLD PREMIERE OF

# FREMONT AVE.

BY **REGGIE D. WHITE**

DIRECTED BY **LILI-ANNE BROWN**

SET DESIGNER  
**TIM MACKABEE**

COSTUME DESIGNER  
**JOS N. BANKS**

LIGHTING DESIGNER  
**KATHY A. PERKINS**

ORIGINAL MUSIC AND  
SOUND DESIGN  
**ANDRÉ PLUESS**

WIG AND HAIR DESIGNER  
**LASHAWN MELTON**

ASSISTANT DIRECTOR AND  
INTIMACY CONSULTANT  
**GREG GEFFRARD**

NEW YORK CASTING  
**MURNANE CASTING/  
AMBER SNEAD, CSA &  
CHAD ERIC MURNANE, CSA**

DC CASTING  
**RAIYON HUNTER**

CA CASTING  
**JOANNE DENAUT, CSA**

STAGE MANAGER  
**JAMIE BERRY\***

ASSISTANT STAGE MANAGER  
**LAUREN PEKEL\***

ORIGINAL SONG  
("SOMEWHERE SOMEONE'S  
WAITING JUST FOR YOU")  
**GEORGE R. PLICK, SR.**

Support for *Fremont Ave.* is provided by **AARP**, Daniel W. Hamilton, and  
The Molly Smith Fund for New Work.

*Fremont Ave.* is the recipient of an **Edgerton Foundation New Play Award**.



*Fremont Ave.* was originally workshopped and developed in the  
2024 Pacific Playwrights Festival as part of The Lab@South Coast Repertory.



# SETTING

A single-level home in a Southern California suburb.

**Act 1:** 1968 | **Act 2:** 1990s | **Act 3:** 2020s

# CAST

*(In order of appearance)*

George/Robert/Joseph.....	<b>BRADLEY GIBSON*</b>
Audrey/Voice of Hazel.....	<b>JERRIKA HINTON*</b>
Frank.....	<b>WILDLIN PIERREVIL*</b>
Tony.....	<b>JEFFREY RASHAD*</b>
Walter.....	<b>STANLEY ANDREW JACKSON*</b>
Older George.....	<b>DOUG BROWN*</b>
Older Robert.....	<b>KEVIN MAMBO*</b>
Damon.....	<b>GALEN J. WILLIAMS*</b>

# UNDERSTUDIES

For George/Robert/Joseph — **WILDLIN PIERREVIL\***

For Audrey/Voice of Hazel — **RAVEN LORRAINE\***

For Frank, Tony, Walter, Damon — **DOMINIQUE GRAY**

For Older George, Older Robert — **ELI EL\***

# FOR THIS PRODUCTION

Casting Assistant.....	<b>ALY WEIN</b>
Production Assistant.....	<b>MARGARET V. WARNER</b>
Script Production Assistant.....	<b>GRACE O. GYAMFI</b>
Stage Carpenter.....	<b>LILY REHBERG</b>
Props.....	<b>ERICA FEIDELSEIT</b>
Light Board Operator.....	<b>NICOLE TRANTUM</b>
Audio Engineer.....	<b>KIRUBELL “KEBBY” SEYOUM</b>
Wardrobe Technician.....	<b>SABRINA SIMMONS</b>
Dresser.....	<b>CAROLINE SMITH</b>
Wig and Hair Technician.....	<b>DELANEY CRAWFORD</b>
Deck Crew Swing.....	<b>TROY JOHNSON</b>

The videotaping or audio recording of this production is strictly prohibited.  
Please turn off all electronic devices unless using our GalaPro closed captioning service.  
Drinks with a lid are allowed in the theater. Eating is not permitted inside the theater.

## SPECIAL THANKS

The Plick Family, The Norman-Terrance Family, The White Family, Colman Domingo, Lauren Gunderson, Korde Arrington Tuttle, & Luke David Rodgers

Dale Albright, Josh Allen, Larry Armelin, Jeff Augustin, Kyle Beltran, Abigail & Shaun Bengson, Phoenix Best, Jocelyn Bioh, Steve H. Broadnax III, Velina Brown, Jonathan Carpenter, Rachel Chavkin, The Commissary, Stephen Daldry, Ben Dent, Crystal Dickinson, Brandon Dirden, Matt Gould, Leah Hamos, Ben Hanna, Melissa Hillman, Patricia Holbrook, James Monroe Iglehart, Amber Iman, Impact Theater, Marin Ireland, Michael R. Jackson, Lindsay Jenkins, Darryl Jones, Nicole Julien, Anne Kauffman, Marissa Keltie, Peter Mark Kendall, Raja Feather Kelly, Tom Kirdahy, Jo Lampert, Matthew López, Craig Marker, Ken-Matt Martin, Griffin Matthews, Mary McCann, Raelle Myrick-Hodges, Deirdre O'Connell, Neil Pepe, Ryan Purcell, Clint Ramos, Taylor Reynolds, Phillip Johnson Richardson, Clinton Roane, Melissa Ross, Leigh Silverman, Sarah Stern, Theatre Bay Area, Tyler Thomas, Liesl Tommy, Michael, Pat, & Chuck Walkup, Whitney White, Dawn Monique Williams, & Lauren Yee

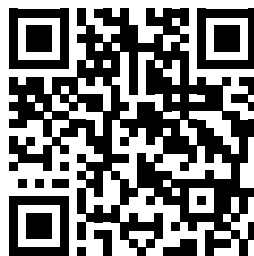


Doug Brown, Bradley Gibson, Galen J. Williams, and Kevin Mambo for Fremont Ave. Photo by Ambe J. Photography.

Thank You For Joining Us!  
Thank You For Joining Us!  
Thank You For Joining Us!  
Thank You For Joining Us!

# WE WANT TO HEAR FROM YOU!

**SCAN THE  
QR CODE**  
TO SHARE  
YOUR THOUGHTS



## TAKE OUR SURVEY!

Please take a few minutes to tell us  
about your experience at the theater.

### Enjoy the performance from the comfort of any seat.

FOR ASSISTANCE, PLEASE SEE AN USHER OR FRONT OF HOUSE STAFF MEMBER.

**CLOSED CAPTIONING  
AT YOUR  
FINGERTIPS**

AVAILABLE STARTING OCT 17



Arena Stage can also provide devices for use during the  
performance at Visitors Services. Availability subject to change.

FOR MORE INFORMATION, VISIT [ARENASTAGE.ORG/ACCESSIBILITY](https://arenastage.org/accessibility),  
EMAIL [ACCESS@ARENASTAGE.ORG](mailto:ACCESS@ARENASTAGE.ORG), OR CALL 202-488-3300.

Arena Stage's Arts Accessibility initiatives are sponsored by  exelon.



# CAST



## BRADLEY GIBSON

(George/Robert/Joseph),

a proud North Carolina native, is known on screen for starring in the Netflix drama *Partner Track* and the hit series *Power Book II: Ghost*. Bradley starred as Simba on Broadway in Disney's classic *The Lion King*, with additional Broadway credits including *A Bronx Tale* and *Rocky*. He originated the role of Hercules in the premiere production of Disney Theatrical's *Hercules* at Paper Mill Playhouse. Off-Broadway, his work includes *Love's Labour's Lost* with The Public Theater and *The School for Scandal* with Red Bull Theater. As a recording artist and concert soloist, Bradley has released original music, including his latest singles "NO ILYS" and "AIN'T THAT EASY," and has performed in venues from London's Royal Albert Hall to the Hollywood Bowl. Instagram: @bradgibson13



## JERRIKA HINTON

(Audrey/Voice of Hazel)

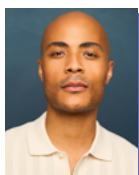
is thrilled to be making her Arena Stage debut after many years in front of the camera. Her recent/favorite credits include *The Piano Lesson* (Netflix), *Mr. Crocket* (Hulu), *A Man in Full* (Netflix), *Hunters* (Amazon Prime), *Here and Now* (HBO), and *Grey's Anatomy* (ABC). She is a proud graduate of Southern Methodist University and a member of both AEA and SAG-AFTRA unions. She is a certified facilitator of The Resilience Toolkit via Lumos Transforms, as well as Mental Health First Aid for the Entertainment Industry through AMHC. More information can be found at [www.jerrikahinton.com](http://www.jerrikahinton.com) and [www.tamhi.co](http://www.tamhi.co).



## WILDLIN PIERREVIL

(Frank, u/s George/Robert/Joseph) is a writer and digital creator based in New York. With a following of nearly 1 million across digital platforms, Wildlin has collaborated with brands and creators that run the virtual

gambit. He's so excited to be back on stage, making his Washington, DC, debut with the Arena and *Fremont Ave.* Shoutout to all the friends, family, and teams whose support has made his being here possible. His love to Steph, Reggie, and Dwayne. @notwildlin



## JEFFREY RASHAD

HE/HIM (Tony)

is a proud graduate of Howard University (BFA) and The Old Globe/University of San Diego Shiley Graduate Acting Program (MFA). His recent credits include *The Comedy of Errors* / *Two Trains Running* (The Acting Company, National Tour); *A Christmas Carol in Harlem* (Classical Theatre of Harlem); *Pass Over* (Resident Ensemble Players); and multiple productions with The Old Globe, including *A Midsummer Night's Dream*, *The Merry Wives of Windsor*, *The Taming of the Shrew*, *Twelfth Night*, *The Nineteenth*, and *Trouble in Mind*. Jeffrey is thrilled to embark on this new chapter with Arena Stage. [www.jeffreyrashad.com](http://www.jeffreyrashad.com) Instagram: @jeffryjeff\_



## STANLEY ANDREW JACKSON

(Walter) is overjoyed to make his Arena Stage debut! DC holds a special place in his heart—he was last seen here more than a decade ago in *Dontrell, Who Kissed the Sea* at Source Theatre.

Since then, he's performed Off-Broadway in *The Refuge Plays* at Roundabout Theatre and most recently stepped into the role of Kenneth in *Primary Trust* at Alley Theatre. His adventures have also taken him overseas with the Pop-up Globe theater company in New Zealand and Australia, performing in *Romeo & Juliet*, *Twelfth Night*, *Henry V*, and *As You Like It*. A proud graduate of Howard University (BFA Acting) and the Royal Central School of Speech and Drama in London (MA Classical Acting), Stanley is thrilled to be "home" again. [www.stanleyandrewjackson.com](http://www.stanleyandrewjackson.com) Instagram: @stanleyaj3



## DOUG BROWN

(Older George)'s credits include *Nine Night*, *Two Trains Running*, *Trip to Bountiful*, *One Flew Over the Cuckoo's Nest*, *A Lesson Before Dying*, *Crumbs from the Table of Joy*, *Pantomime*, *An Asian Jockey in Our Midst*, and *The Petrified*

*Forest* at Round House Theatre; *Something Moving*, *Fences*, *Jitney*, and *Member of the Wedding* at Ford's Theatre; *Our Lady of 121 Street*, *Fuddy Meers*, *Last Orbit* at Billy Mars, *Homebody/Kabul*, *Day Room*, and *Measure for Pleasure* at Woolly Mammoth Theatre; *Painted Rocks* at Revolver Creek, *The Gin Game*, *The Island*, and *Mooi Street Moves* at MetroStage; *Ma Rainey's Black Bottom*, *Hambone*, *The Colored Museum*, *Split Second*, and *Spunk* at Studio Theatre; *Much Ado About Nothing* at Folger

**"A DELICIOUS MIX OF FEAR AND EXCITEMENT."**

—North West End (UK)

# PARANORMAL ACTIVITY

**A NEW STORY LIVE ON STAGE**

BY ARRANGEMENT WITH PARAMOUNT PICTURES AND MELTING POT  
IN CO-PRODUCTION WITH CHICAGO SHAKESPEARE THEATRE, CENTER THEATRE GROUP,  
AND AMERICAN CONSERVATORY THEATER

TM & © 2025 Paramount Pictures. All Rights Reserved.

**JAN 28–FEB 7, 2026 | HARMAN HALL**

**ORDER TODAY** [ShakespeareTheatre.org](https://ShakespeareTheatre.org) | 202.547.1122

# CAST

Theatre; *Otabenga* at Signature Theatre; *Jitney* and *Piano Lesson* at Actors Theatre of Louisville; *Radio Golf* and *Gem of the Ocean* at Milwaukee Rep; and *Two Trains Running*, *Jitney*, and *Trip to Bountiful* at Cincinnati Playhouse in the Park.



**KEVIN MAMBO** (*Older Robert*)'s Broadway, off-Broadway, and tour credits include *Fela!*; *The Color Purple*; *The Book of Mormon* (1st National Tour, Helen Hayes nomination); *The History of Empires* (La MaMa); *Fortress of Solitude* (Dallas Theater

Center/The Public, Lortel nomination); *Mlima's Tale* (The Public); *Ruined* (Goodman/MTC); *The Convert* (Kirk Douglas Theatre/Goodman/McCarter); *Venus*, *Painted Rocks* at Revolver Creek (Signature NYC); *Seven Guitars*, *Pericles* (Two River Theater); *The Last Detail* (Lucille Lortel Theatre); and *Once Around the Sun* (Zipper Factory Theater). DC credits include *We Are Gathered* at Arena Stage and *The Tempest* (Helen Hayes nomination) and *Radio Golf* (Helen Hayes Award) at Round House Theatre. Film: *Rustin*, *Nina*, *Cadillac Records*, *Rebel in the Rye*, *Payback*, *One of Us Tripped*, *Firing Squad*, *Selah* and the *Spades*, *The Southside*, *Henchman of Notre Dame* (Best Actor), *Trooper*, *Man in the Mirror*. TV: *Guiding Light* (two Emmy Awards, three nominations), *Hit & Run* (lead), *Saint X* (lead), *Luke Cage* (lead), *High Maintenance* (recurring), *The Good Doctor*, *Blacklist*, *Happyish* (recurring), *Soul Food* (recurring), *One Life To Live* (recurring), *Law & Order* (Original/Deadline/SVU/Trial by Jury/Criminal Intent/Reboot), *Spin City*, *Elementary*, *Any Day Now*, *Mistresses*, *Family Matters*, *Freshman Dorm* (lead), *Great Performances*. Instagram: @iammambo



**GALEN J. WILLIAMS** (*Damon*) is thrilled to make his Arena Stage debut! He was last seen in the Helen Hayes Award-winning production of *Fela!* at Olney Theatre Center in the ensemble and as the *Fela* alternate. Broadway credits

include *Slave Play* and *Motown The Musical*. Regional credits include *Once on This Island* at Oregon Shakespeare Festival and *The Brothers Size* at Geffen Playhouse. His silver screen debut was made this year in the box office smash *One of Them Days* starring Keke Palmer and SZA, and his television credits include *POSE* on FX and Tyler Perry's *The Oval* and *Assisted Living* on BET. "Thank you to my family, friends, and team for your continued support!" MFA: University of Southern California. BFA: Howard University.

Instagram/Tiktok: @theegalenjwilliams



**RAVEN LORRAINE** (*u/s Audrey/Voice of Hazel*) is a raconteuse from Richmond, Virginia, currently working as an actor and director in DC. Select performance credits include *Violet in Covenant* at Theater Alliance (Helen Hayes

nomination, Outstanding Supporting Actor); Ensemble in *Fela!* at Olney Theatre Center/Round House Theatre (Helen Hayes Awards, Outstanding Musical and Ensemble); Ursula and u/s Kent in *King Lear*, Balthasar/Seacoal in *Much Ado About Nothing* at Shakespeare Theatre Company (Helen Hayes nomination, Outstanding Production). Other regional credits include *The Winter's Tale*, *King Lear*, *Little Women*, *Sense and Sensibility*, *Comedy of Errors* (American Shakespeare Center); *Curious Incident* (Virginia Repertory Theatre); and *A Midsummer Night's Dream* (Richmond Shakespeare). Raven is a company member with Only Make Believe and, most recently, associate directed the musical *Play On!* at Signature Theatre. Thanks to God, my family, & Onyx. For Karen.



**DOMINIQUE GRAY** (*u/s Frank/Tony/Walter/Damon*) is excited to be making his

Arena Stage debut! Credits include Keegan Theatre's *Hand to God* and *Apropos of Nothing*, and Imagination Stage's *10 Seconds* and *The Last Martyr*. He

is a 2024 Graduate of the National Conservatory of Dramatic Arts.



**ELI EL** (*u/s Older George/Older Robert*) is returning to Arena Stage after performing in *The Great Society* (2018). Other theater performances include *The Piano Lesson* (1st Stage); *Testosterone*, *Migraaaaaants* (ExPats Theatre); *AJAX* (Scena

Theatre); *Radio Golf* (Round House Theatre); *Fat Ham* (Studio Theatre); *A Thirst for Freedom* (Live Garra); and many more. He has completed and is currently involved with several independent film projects, including *Once Upon a Time in the District*, *Unarmed Man*, *Harriet*, *The Meek*, *Last Night*, *THICK*, etc. Eli has directed *The Healing Floor* (DCBTF Award winner). He also directed a feature film and two shorts, *The Cracked Mask* and *Lay Me Down*. His motto is "you can learn from anyone, if only you allow yourself to."



# CREATIVE

**REGGIE D. WHITE** (*Playwright*), currently serving as Arena Stage's Senior Director of Artistic Strategy and Impact, is an award-winning artist and educator whose international career spans almost two decades. His acting credits include Matthew López's Tony-winning epic *The Inheritance*, *Goddess* (Public Theater), *Bayard Rustin: Inside Ashland* (People's Light), *I and You* (59E59), *Hundred Days* (New York Theatre Workshop), *The Luckiest* (La Jolla Playhouse), and *Macbeth In Stride* (American Repertory Theater). His directing credits include Atlantic Theater Company, The Public, The Repertory Theatre of St. Louis, and Indiana Repertory Theatre. Reggie co-conceived *Lessons in Survival: 1971*, based on the iconic conversation between Nikki Giovanni and James Baldwin, at Vineyard Theatre (NYT Critic's Pick). He also co-conceived and appeared in the digital anthology series of the same title (NYT Best of 2020). His play *In Case You Haven't Heard* premiered at Bay Street Theater, and his play *Fremont Ave.* will have its world premiere at Arena Stage and South Coast Rep. Reggie is a Vineyard Theatre resident artist, a founding member of the multi-generational theater collective The Commissary, and a founding company member with The Feast, a living-wage theater company. Reggie is a recipient of the Colman Domingo Award, the TCG Fox Fellowship, the TBA Titan Award, and the RHE Artistic Fellowship, and an NAACP Theatre Award nominee. [www.reggiedwhite.com](http://www.reggiedwhite.com)

**LILI-ANNE BROWN** (*Director*), a Chicago South Side native, works as a director, actor, and educator, and has performed in, directed, and produced many award-winning shows in Chicago and nationally. Recent directing credits include *Play On!* (Signature Theatre); *Fela!* (Olney Theatre); *Ain't No Mo'* (Woolly Mammoth/Baltimore Center Stage); *Acoustic Rooster...* (Kennedy Center, National Tour); *The Color Purple*, *The Nacirema Society...*, *School Girls*, and the world premieres of Ike Holter's *I Hate It Here* and *Lottery Day* (Goodman Theatre); *Two Trains Running* (The Acting Company, National Tour); *Dreamgirls* (McCarter Theatre/Goodspeed Musicals); *Joe Turner's Come and Gone* (Huntington Theatre); *Waitress*, *Rent*, *The Color Purple* (The Muny); *Once on This Island* (Oregon Shakespeare Festival); and *Put Your House in Order* (La Jolla Playhouse). She is the former Artistic Director of Bailiwick Chicago, where she focused programming on Chicago-premiere musicals and new play development with resident playwrights. She has received two Helen Hayes Awards, five Jeff Awards, two BTA Awards, and one African American Arts Alliance Award. She is an inaugural recipient of the Walder Foundation's Platform Award and a 2021 recipient of the 3Arts Award for Theatre. She is a member of SDC, AEA, SAG-AFTRA, and a graduate of Northwestern University. [www.lilbrowinchicago.com](http://www.lilbrowinchicago.com)



Wildlin Pierrevil, Jeffrey Rashad, Bradley Gibson, and Stanley Andrew Jackson for *Fremont Ave.* Photo by Ambe J. Photography.

**TIM MACKABEE** (*Set Designer*) Arena Stage: *The Age of Innocence*. Broadway: *The Elephant Man* (starring Bradley Cooper), *Mike Tyson: Undisputed Truth* (dir. Spike Lee). West End: *The Elephant Man*. Off-Broadway: MCC: *Seared* (OCC Award); Atlantic: *Guards at the Taj* (Lortel Award), *Describe the Night*, *The Penitent*, *Our New Girl*; Roundabout: *Darling Grenadine*, *The Last Match*; MTC: *Poor Yella Rednecks*, *Vietgone*, *Important Hats of the Twentieth Century*; LCT: *Luce*; Vineyard: *Gigantic*, *Heathers The Musical*. Music Video: Carly Ray Jepsen's "Surrender My Heart." TV: Amy Schumer: *Live at the Apollo* (HBO), *Gotham*, *Smash*, *The Today Show*, *Football Night in America*. Education: North Carolina School of the Arts, Yale School of Drama. [timothymackabeedesign.com](http://timothymackabeedesign.com)  
[@timmackabeedesign](https://www.instagram.com/timmackabeedesign)

**JOS N. BANKS** (*Costume Designer*), a true Renaissance man, is a multi-award-winning visual/performing arts artist, costume designer, teaching artist, and LGBTQ+ trailblazer. Tours/International: *Lola in Kinky Boots*, *Hud in Hair*, *Harpo in The Color Purple*. Select Regional: Steppenwolf, Goodman, Yale, Arena Stage, The Muny, McCarter, Goodspeed, Drury Lane, Paramount Theatre, The Second City, Orlando Shakes, About Face Theatre, Porchlight Music Theatre, Writers Theatre, Congo Square, Definition Theatre, and many more. Film: Ocean in Showtime's *The Chi*, Dr. Greg Martinson in Showtime's *Work in Progress*, and Rise Against's "Make It Stop" (lead). He is a four-time nominee for "Best Costume Designer" at the Black Theater Alliance Awards. Jos also serves as an Artistic Associate with About Face Theatre in Chicago and was afforded the company's first-ever costume designer residency. Rep: The Mine Agency. [www.fearlessjos.com](http://www.fearlessjos.com) Instagram: [@josnbanks](https://www.instagram.com/josnbanks)

**KATHY A. PERKINS** (*Lighting Designer*) has designed for Broadway, Off-Broadway, and regional theaters, including American Conservatory Theater, Arena Stage, Berkeley Repertory, Seattle Repertory, St. Louis Black Repertory, Goodman, Steppenwolf, Alabama Shakespeare Festival, Mark Taper, Yale Repertory, Two River Theater, and PlayMakers Repertory. Internationally, she has designed in South Africa, Switzerland, Cuba, and Canada. In 1995, Kathy co-curated the exhibition *ONSTAGE: A Century of African American Stage Design* at Lincoln Center in New York. She is the editor of seven anthologies focusing on women of the African Diaspora. Kathy is the recipient

of numerous research and design awards, including Ford Foundation, Fulbright, NEA, the Henry Hewes, NAACP Image Award, and the USITT Distinguished Achievement Award for both Education and Lighting Design. Kathy is a graduate of Howard University and the University of Michigan.

**ANDRÉ PLUESS** (*Original Music and Sound Design*)'s Arena Stage credits include *Ride the Cyclone*, *Right to Be Forgotten*, *Indecent*, *Smart People*, *Metamorphoses*, *Equivocation*, *The Arabian Nights*, *Legacy of Light*, *33 Variations*, and *Passion Play*. Broadway credits include *Good Night*, *Oscar*, *The Minutes*, *33 Variations*, *I Am My Own Wife*, and *Metamorphoses*. Off-Broadway credits include *The Clean House* at Lincoln Center, and *Milk Like Sugar* and *BFE* at Playwrights Horizons. Regional credits include multiple productions with the Oregon Shakespeare Festival, Center Theatre Group, Yale Repertory, McCarter Theatre, Steppenwolf, Chicago Shakespeare, Court Theatre, Berkeley Repertory, Williamstown Theatre Festival, La Jolla Playhouse, Huntington Theatre, and South Coast Repertory. He's received multiple Joseph Jefferson Awards, an Ovation Award, Drama Critics Circle Award, Barrymore Award, Helen Hayes Award, Drama Desk, and Lucille Lortel nominations for composition and design. André is an ensemble member of Lookingglass Theatre Company.

**LASHAWN MELTON** (*Wig and Hair Designer*) is a native Washingtonian hair and wig designer. DC Area: Folger Theatre: *Julius X* (wig design), *The Winter's Tale* (wig design); Woolly Mammoth Theatre: *The Great Privation* (wig design), *The Sensational Sea Mink-ettes* (wig design); Signature Theatre: *Play On!* (wig design); Olney Theatre Center: *Senior Class* (wig design), *Comedy of Tenors* (wig design); Studio Theatre: *Paradise Blue* (wig design); Arena Stage: *Death on the Nile* (hair and wig design), *The Other Americans* (hair design), *Tempestuous Elements* (wig design), *Snow Child* (hair and makeup design); GALA Theatre: *On Your Feet!* (wig design); The Kennedy Center: *The Watsons Go to Birmingham – 1963* (wig design); Round House Theatre: *School Girls*; *Or, The African Mean Girls Play* (wig design). Regional: Utah Shakespeare Festival: *A Raisin in the Sun*, *Emma The Musical*, *The Play that Goes Wrong* (wig design). Film/TV: *Lioness* (hairstylist), *White House Plumbers* (hairstylist), *Rustin* (hairstylist), *Fellow Travelers* (hairstylist). Education: BA in Art, The University of the District of Columbia.

# CURTAIN UP!



on this month's  
shows and  
interviews  
with your  
favorite DC  
theater-makers

## *Enhance Your Experience*

**Become a member today!**

Ticket sales only cover about half of what it takes to bring Arena's incredible productions to our stages, so when you donate, you make every aspect of Arena Stage possible.

With your gift of \$120 or more, you unlock exclusive member benefits, like discounts on ticket purchases, invitations to behind-the-scenes events, and so much more.

Visit **[ARENASTAGE.ORG/DONATE](https://arenastage.org/donate)** to join today!

The cast of *My Fair Lady* (2012/13 Season). Photo by Suzanne Blue Star Boy.

# CREATIVE

**GREG GEFFRARD HE/HIM** (*Assistant Director and Intimacy Consultant*) Regional: *Revolution(s)*, *The Color Purple*, *The Nacirema Society* (Goodman); *Sanctuary City*, *Choir Boy* (Steppenwolf Theatre); *Hot Wing King*, *The Band's Visit* (Writers Theatre); *Strange Loop*, *K-I-S-S-I-N-G*, *Joe Turner's Come and Gone* (Huntington Theatre); *Beneath The Willow Tree* (Pulse Theatre); *Tambo & Bones* (Refracted Theatre); *The Factotum* (Chicago Lyric Opera); *Comedy of Errors* (Chicago Shakespeare); *Once on This Island* (The Drama Group); *Fen* (Court Theatre); *A Third Way* (Actor's Express); *Fairview* (Theatre Cedar Rapids). DC Area: *The Color Purple* (Signature Theatre); *White Noise* (Studio Theatre). Upcoming: *Christmas Carol* (Stage Door Theatre); *Brief Wondrous Life of Oscar Wao* (Goodman). Other: Guiding Faculty with Theatrical Intimacy Education.

**MURNANE CASTING** (*Casting*) casts for Broadway, tours, and regional theater. Current and recent projects include tours of *TINA*, *Dear Evan Hansen*, *Mrs. Doubtfire*, *The Sound of Music*, *Grinch*, and *Kinky Boots*. Developmental work includes *Anne of Green Gables*, *The Boy Who Loved Batman*, and *Fremont Ave*. We regularly collaborate with major theaters nationwide, including Arena Stage, Asolo Rep, Bay Street, Denver Center, Goodspeed, and The Hollywood Bowl. Learn more at [murnanecasting.com](http://murnanecasting.com).

**RAIYON HUNTER** (*DC Casting*) is a casting director, producer, and arts administrator from New Orleans, Louisiana. She currently works as the Casting Director/Line Producer of Arena Stage. Previously, she worked as the Casting Director of Children's Theatre Company and the Spelman Leadership Fellow at the Alliance Theatre where she has contributed to a multitude of shows in varying capacities ranging from casting associate to director on productions such as *Do You Love the Dark?*, *Darlin' Cory*, *Bina's Six Apples*, *Good Bad People*, *Confederates*, and more. Additionally, she has been in residency at Oregon Shakespeare Festival under Nataki Garrett and The Repertory Theatre of St. Louis under Hana S. Sharif.

**JAMIE BERRY SHE/HER** (*Stage Manager*) is thrilled to be back at Arena and honored to be part of the team for this beautiful production! She prides herself on ensuring spaces are safe, equitable, and joy-filled for casts and crew. Her most recent/selected work includes *Play On!* (ASM, Signature Theatre), *We Are Gathered* (ASM, Arena Stage), *Jaja's African Hair Braiding* (ASM, Arena Stage), the First National Tour of *Back to the Future* (Sub SM), *Dreamgirls* (PSM, McCarter Theatre 2024 and Goodspeed Opera House 2023), and the five-time 2024 Helen Hayes Award recipient, *Fela!* (PSM, Olney Theatre Center/Round House Theatre). Instagram: [@jamiedreamsbig](https://www.instagram.com/jamiedreamsbig)

**LAUREN PEKEL** (*Assistant Stage Manager*) is excited to be part of the stage management team for the world premiere of *Fremont Ave*. Some of her favorite DC credits include *Data* (world premiere) at Arena Stage; *Job*, *Private Jones* (world premiere), and *Selling Kabul* with Signature Theatre; *Paradise Blue*, *Fat Ham*, *Fun Home*, *Good Bones* (world premiere), and *People, Places & Things* with Studio Theatre; and *Teenage Dick* and *The Second City's She the People: The Resistance Continues!* with Woolly Mammoth Theatre Company. Her DC credits also include productions with Folger Theatre, Shakespeare Theatre Company, Theater J, and Theater Alliance. Lauren is an alumna of the University of Wisconsin-Milwaukee's Theatre Program, with a BFA in Stage Management, and is a proud member of Actors' Equity Association.

**SOUTH COAST REPERTORY** Tony Award-winning South Coast Repertory, founded in 1964, is led by Artistic Director David Ivers and Managing Director Suzanne Appel. SCR is widely recognized as one of the leading professional theaters in the United States. While its productions represent a balance of classic and modern plays and musicals, SCR is renowned for its extensive new-play development program—The Lab@SCR—which includes one of the nation's largest commissioning programs for emerging, mid-career, and established writers. Of SCR's more than 550 productions, one-quarter have been world premieres. SCR-developed works have garnered two Pulitzer Prizes and eight Pulitzer nominations, several Obie Awards, and scores of major new-play awards. Located in Costa Mesa, CA, SCR is home to the 507-seat Segerstrom Stage, the 336-seat Julianne Argyros Stage, and the 94-seat Nicholas Studio. [www.scr.org](http://www.scr.org)



# ARENA LEADERSHIP

**HANA S. SHARIF** (*Artistic Director*) has enjoyed a multi-faceted theater career, including roles as an artistic leader, director, playwright, and producer with a specialty in strategic and cross-functional leadership. Hana began her professional career as an undergraduate student at Spelman College. From 1997 to 2003, Hana served as the co-founder and Artistic Director of Nasir Productions, a theater dedicated to underrepresented voices challenging traditional structure. Hana joined the Tony® Award-winning regional theater, Hartford Stage, in 2003. During her decade-long tenure at Hartford Stage, Hana served as the Associate Artistic Director, Director of New Play Development, and Artistic Producer. Hana launched the new play development program, expanded the community engagement and civic discourse initiatives, and developed and produced Tony®, Grammy, Pulitzer, and Obie Award-winning shows. Starting in 2012, she served as Program Manager at ArtsEmerson, a leading world theater company based at Boston's Emerson College. During her tenure at ArtsEmerson, Hana launched an Artists in Residency program, led a research program assessing barriers to inclusion across the region, and leveraged her regional theater experience to freelance produce for smaller theater companies looking to expand and restructure their administrative teams. Hana was Baltimore Center Stage's Associate Artistic Director from 2014 to 2019 and was the architect of the innovative CS Digital program: a platform that pushes the boundaries of traditional theater and looks at the nexus point between art and technology. Her other achievements at Baltimore Center Stage included prototyping the Mobile Unit focused on historically underserved audiences, strengthening community engagement, producing multiple world and regional premieres, and helping to guide the theater through a multi-million dollar building renovation and rebranding effort. Hana became the first Black woman to lead a major regional theater in 2018 when she was named the Augustin Family Artistic Director of The Repertory Theatre of St. Louis. During her tenure at The Rep, Hana guided the organization through a strategic alignment, revolutionized the New Works program, expanding access to underserved communities, and centering equity and anti-racism as the organization's foundational values. Hana holds a BA from Spelman College and an MFA from the University of Houston. Hana is the recipient of USITT's 2023 Distinguished Achievement Award, Spelman's 2022 National Community Service Award, the 2009-10 Aetna New Voices Fellowship, EMC Arts Working Open Fellowship, and Theatre Communications Group (TCG) New Generations Fellowship. Hana is a founding member of The Black Theatre Commons (BTC). She serves on the board of directors for the TCG, BTC, and the Sprott Family Foundation.

**EDGAR DOBIE** (*Executive Producer*) Born in Vernon, British Columbia, a village next to the Rocky Mountains (three years after Arena had its first performance in 1950), I am one of five brothers raised by my Dad Edgar, a mechanic and small businessman, and Mom Connie, a telephone operator and union organizer. I am the only Dobie to make a career in theater. Luckily for me, drama was an arts elective I was offered at the tender age of 12 so I hung up my hockey skates and joined the drama class, led by teacher Paddy Malcolm and her fledgling Powerhouse Community Theater after school. By the time I graduated from high school, we volunteers had built ourselves a 200-seat, fully equipped theater on its own piece of land in the center of town and found a sold-out audience for the full season of plays we had on offer. That experience taught me so many lessons about the power of theater to foster collaboration and share meaningful stories, as well as the public values that attach themselves to building a safe place where everyone is welcome. All those lessons served me well as a managing leader and producer both sides of the border and both sides of the commercial and non-profit theater divide. Arriving here in Southwest with my good wife Tracy and our daughter Greta Lee in 2009 makes me feel like I am well-equipped to do a good job for you all. I am honored to have been recognized for my service to, and leadership of, the Washington, D.C.-area theater community as a recipient of Theatre Washington's inaugural Victor Shargai Leadership Award in 2022.

This theater operates under an agreement between the League of Resident Theatres and Actors' Equity Association.



The actors and stage managers are members of Actors' Equity Association, the Union of Professional Actors and Stage Managers in the United States.



The scenic, costume, lighting and sound designers in LORT theaters are represented by United Scenic Artists, Local USA-829 of the IATSE.



The Director and Choreographer are members of the **STAGE DIRECTORS AND CHOREOGRAPHERS SOCIETY**, a national theatrical labor union.

Arena Stage is a constituent of the Theatre Communications Group (TCG), the national organization for the American theater.

# BOARD OF TRUSTEES

## CHAIR

Catherine  
Guttman-McCabe

## VICE CHAIRS

Deborah E. Bowles  
Jeffrey M. Busch  
Susan Carter  
Anthony Coley  
Celandra Deane-Bess  
Edgar Dobie  
Kristen Donoghue  
David Fisher  
Vicki J. Hicks  
Alethia Jackson  
Raymond Janvier  
Danny Korengold  
David B.H. Martin  
Lucia Riddle  
Hana S. Sharif  
David E. Shiffrin  
Mignon Smith

## TRUSTEES

Andrew R. Ammerman  
Linda A. Baumann  
Jeri Epstein  
Richard A. Feinstein  
Elliot J. Feldman  
Stephenie Foster  
Ricki Kanter  
Daphne Kwok  
Elissa Leonard  
John Lynham  
B. Thomas Mansbach  
Tiffeny Sanchez  
Sheila Stampfli  
Michael S. Steele  
George White  
Karen Zacarias

## HONORARY TRUSTEES

Jim Abdo  
Decker Anstrom  
Ashok Bajaj  
Judith N. Batty  
Michelle G. Berman  
Steven R. Bralove  
Susan Haas Bralove  
Eric Braverman  
Joseph P. DiGangi  
Rick Froehlich  
Natwar Gandhi  
Nicholas Goad  
Patti Herman  
Sue Henry  
Dr. Donald Wallace Jones  
Judy Lansing Kovler  
Mark Levine  
Jill McGovern  
Richard A. Newman  
Ronald A. Paul, MD  
Terry R. Peel  
Beverly Perry  
Ilene Rosenthal  
Raymond Sczudlo  
David Bruce Smith  
Richard W. Snowden  
Margaret Tomlinson  
Shawna Watley

## LIFE TRUSTEE

Lee G. Rubenstein

## YOUNG PATRONS BOARD TRUSTEE

Victoria Clark Hunter

## EMERITUS TRUSTEES

John M. Derrick  
Arlene and Robert Kogod  
David O. Maxwell  
Joan P. Maxwell

## CORPORATE OFFICERS

**PRESIDENT/EXECUTIVE PRODUCER**  
Edgar Dobie

**ARTISTIC DIRECTOR**  
Hana S. Sharif

**TREASURER**  
Judy Leventhal

**SECRETARY**  
Alison Irvin

# YOUNG PATRONS BOARD

The Arena Stage Young Patrons Board seeks to strengthen and support the future of American theater at Arena Stage. The Young Patrons Board supports the artistic mission of Arena Stage by being active ambassadors to the community and promoting opportunities for people under 40 years old to engage with the theater.

## MEMBERS

Michael F. Baylis II  
Julie Alderman Boudreau  
Dr. Adrienne Brown  
Michelle Brown  
Justine Casselle  
Dr. Alexandria Edwards  
Shoshana Golden  
Whitney Hubbard  
Linda Irizarry  
Lucrecia Johnson

Benjamin Lang  
Ashley Lawrence  
Lauren Pate  
Sasha Pierre-Louis  
Emily Rouse  
Hillary Stemple  
Michael Walker

## CHAIR

Victoria Clark Hunter

# ARENA STAGE LEGACY GIVING ADVISORY COUNCIL

The Arena Stage Legacy Giving Advisory Council includes current and former trust and estate attorneys, financial advisors, and wealth managers. The Council serves as a resource, sounding board, and consultative body that enhances the professional development expertise of Arena Stage and helps build enthusiasm for legacy gifts for the theater. We are so grateful to the Council members for their service:

**Edward Jay Beckwith**,  
private wealth attorney,  
Partner, BakerHostetler

**Debbie Bowles\*, CFP®**,  
retired wealth manager,  
Wells Fargo Advisors

**Mara Bralove, CFP®**, family  
wealth advisor, The  
Bralove Group at Morgan  
Stanley

**Celandra Deane-Bess\*, CFP®**, Senior Vice  
President, Private Client  
Advisor, Bank of America  
Private Bank

**John Lynham, Jr.\***, estate  
planning attorney,  
Principal, Offit Kurman

**Aimee Griffin, Esq.,**  
LLM, estate planning  
attorney, President  
of the Association of  
Black Estate Planning  
Professionals and  
Principal, Life & Legacy  
Counselors

**Anna Katherine "A.K."**  
**Moody, J.D., LL.M.**, private  
wealth strategist, BNY  
Wealth

**Lisa McCurdy**, estate  
planning attorney,  
Managing Partner, The  
Wealth Counselor, LLC,  
and CEO, Defining Legacy  
Group, LLC

**Richard "Dick" W.**  
**Snowdon\***, retired estate  
planning attorney

\*Arena Stage Trustee or  
Honorary Trustee

Station**4** AMERICAN BISTRO  
& LOUNGE

# PRE-SHOW DINNER SPECIAL

with your Arena Stage ticket

---

Choose between a  
**\$35** Three Course Dinner or **BOGO** deals

---



**Buy One Appetizer Get One 50% Off**  
**Buy One Bottle of Wine Get One Free**  
**Buy One Cocktail Get One Free**  
**Buy One Dessert Get One Free**

**Show your same day Arena Stage ticket.**

Reserve at [www.station4dc.com](http://www.station4dc.com) or call (202) 488 0987  
1101 4th St SW Washington DC 20024 • 5 minute walk to Arena Stage

# ARENA STAGE'S PLANNED GIVING PROGRAM



Arena Stage is deeply grateful to those individuals who secure the future of our theater through gifts made in their wills, trusts, or by beneficiary designation. Your generosity ensures we can continue to challenge, educate, and entertain audiences, preserving our commitment to excellence in theater nationally and internationally for generations to come.

We are especially grateful for those who have participated in our Legacy Match, where current donors match your new or increased legacy commitment, costing you nothing now to provide both current and future support.

If you are interested in learning more about the Legacy Match and joining the Full Circle Society, please get in touch with Maya Weil, CAP®, at (202) 600-4158 or [mweil@arenastage.org](mailto:mweil@arenastage.org).

The following are members as of September 18, 2025

## MEMBERS

Anonymous (10)  
 Esthy\* and Jim Adler  
 Andrew R. Ammerman  
 Dr. Bill Sanford Ashley  
 Elinor R. Bacon  
 Linda A. Baumann  
 Gail Becker  
 Nan Beckley  
 Mary Bender  
 Sue Benson  
 Diane Boehr  
 Deborah E. Bowles  
 Susan and Steven Bralove  
 Dr. Robert and Mary Jo Brenner  
 Bonnie\* and Jere Broh-Kahn  
 Louise Budelis  
 Donald Burch, III  
 James C. Burks and Dr. Bette Jane Pappas  
 Anne L. Buzalski\*  
 John P. Cahill  
 Susan E. Carter and Ricardo A. Contreras  
 Ellen MacNeill Charles  
 Donald J. and Anita P. Cowan  
 Captain Joan Darrah and Ms. Lynne Kennedy  
 Martin Alan "Marty"\* and Belle Negrin Davis  
 Joseph P. DiGangi  
 John Edelman and Jeffrey Love  
 Vivian B.\* and Lisa D. Eggers  
 Barbara B. Ehrlich  
 Jeri and Gary Epstein  
 Isaac Evans  
 Skip and Laurette Farmer  
 Nancy M. Folger  
 Gary P. Fontaine  
 Catherine F. and James F.\* Fort, Sr.  
 Dr. Ellen Fox  
 Larry Franks and Ellen Berelson  
 Becky Fredriksson  
 Dr. Helene C. Freeman  
 Arlene Friedlander  
 Rick and Carol Froehlich  
 Steven Garron  
 Suzan and Gary Gladstone  
 Jon K. Gossett and Alex Urdaneta  
 Bob Gronenberg  
 Catherine and Christopher Guttman-McCabe  
 Rita and Wilbur Hadden  
 Chris Harris  
 Betty Hawthorne

Dr. JC Hayward  
 Vicki J. Hicks  
 Richard and Pamela Hinds  
 Sallie L. Holder  
 Lauren\* and Glen Howard  
 Ann Ingram  
 David Insinga and Robert McDonald  
 Thomas Jesulaitis and Barrie M. Seidman  
 James Johnson and Matthew Shepard  
 Dr. Seth A. Koch and Barbara Bellman Koch  
 Patricia and John Koskinen  
 Justin Latus  
 Thelma K. Leenhouts  
 Herb and Dianne Lerner  
 Carol Ann and Kenneth Linder  
 John and Patricia Long  
 John and Lenora Lynham  
 Sandra L. Mabry  
 Alison Masters MacTavish  
 Wells R. McCurdy  
 Alfred Munzer and Joel Wind  
 LaVerne G. Naughton  
 Paul and Nancy Newman  
 Marina and David Ottaway  
 Laura Peebles  
 Amy Phillips  
 Robert Pincus  
 Michael and Penelope Pollard  
 Mr. and Mrs. Thomas J. Reckford  
 Paul Rose  
 Richard Schwartz\* and Beth Newburger Schwartz\*  
 Ms. Bonnie J. Semilof  
 Larry Shaw and Richard Freitag  
 David E. Shiffrin  
 Mark and Merrill Shugoll  
 Mike and Patti Sipple  
 Leonard Sirota, Eileen Ivey and Rachel Sirota  
 Molly Smith and Suzanne Blue  
 Star Boy  
 Dick and Katie Snowdon  
 Sheila A. Stampfli  
 Aileen and Jack Sullivan  
 Terri L. Tedford  
 Helene Toiv  
 Margaret L. Tomlinson  
 Maya Weil  
 Val and John Wheeler  
 Alexander and Michelle Zajac  
 Pamela Zitron and Jacob Gallun

## BEQUESTS AND GIFTS IN REMEMBRANCE

Anonymous (2)  
 Estate of Dr. and Mrs. Clement C. Alpert  
 Estate of J. Alton and Cynthia Boyer  
 Estate of H. Max and Josephine F. Ammerman  
 Estate of Jan Ellen Balkin  
 Estate of Audrey J. Barnett  
 Estate of Harry J. Boissevain  
 Estate of Henrietta T. Braunstein  
 Estate of Dorothy A. Bunevich  
 Estate of Mary Lou Calene  
 Estate of Patricia Carroll  
 Estate of Albert Chaiken  
 Estate of Judith Claire  
 Estate of Helen G. Codding  
 Estate of Marcus Cohn  
 Estate of Israel and Augusta Convisser  
 Estate of Camille Cook  
 Estate of Robert D. Davis Jr. and Henry J. Schalziki  
 Estate of Mr. William E. Faragher  
 Estate of Zelda Fichandler  
 Estate of Donald H. Flanders  
 In Memory of Helen W. and Felix E. Geiger  
 Estate of Ann Gibbons  
 Estate of Ezra Glaser  
 Estate of George Grizzard  
 Estate of Margaret M. Hansen  
 Estate of Giselle Hill  
 Estate of Joan E. Kain  
 Estate of Margot Kelly  
 In Memory of Jean Russ Kern and Jeannette G. Kern  
 Estate of Gladys Kessler  
 Estate of Herbert A. Lindow  
 Estate of LaRue R. Lutkins  
 Estate of Jeannette Murphy  
 Estate of Marianne R. Phelps  
 Estate of Suzy Platt  
 Estate of Judy Lynn Prince  
 Estate of Ms. Jane Rissler  
 Estate of Toni A. Ritzenberg  
 Estate of Gruine Robinson  
 Estate of Hank Schlosberg  
 Estate of Eugene Schreiber  
 Estate of Helga Tarver  
 Barbara R. Walton Endowment Fund for New Playwrights  
 Estate of Eric Weinmann  
 Estate of Frankie and Jerry Williamson

THANK YOU FOR LEAVING YOUR LEGACY AT ARENA STAGE



# INDIVIDUAL DONORS

Arena Stage gratefully acknowledges the many individuals and families who support the theater's work by contributing to the Annual Fund. These gifts make it possible for the theater to continue presenting high-quality productions and innovative education programs that strengthen the community in which we live.

For more information on the benefits of becoming an Annual Fund contributor, please call the Development Department at 202-600-4177.

The following are members as of September 18, 2025.

## OVATION CIRCLE

Anonymous (1)  
Decker Anstrom and Sherry Hiemstra  
Margot Kelly\*  
Arlene and Robert Kogod  
Judy Lynn Prince\*  
The Toni Ritzenberg Fund  
for Educational and  
Community Outreach  
Programs at Arena Stage  
Tiffany Sanchez and Reg Brown

## FOUNDER'S CIRCLE

Susan and Steven Bralove  
Rick and Carol Froehlich  
Reinsch Pierce Family  
Foundation by Lola C.  
Reinsch  
Beth Newburger Schwartz\*  
and Richard Schwartz\*  
Peggy and David Shiffrin

## BENEFACTOR'S CIRCLE

Anonymous (1)  
Andrew R. Ammerman  
Linda A. Baumann  
Michele and Allan Berman  
Judy and Peter Blum Kovler  
Foundation  
Deborah Bowles  
Susan E. Carter  
Anthony Coley  
Kristen Donoghue and Jon Hacker  
Pam and Richard Feinstein  
Bonnie Feld  
Drs. Elliot J. Feldman and Lily Gardner Feldman  
Mr. and Mrs. David Fisher  
Henock Gebreamlak and Nicholas Goad  
Chris and Catherine Guttman-McCabe  
Daniel W. Hamilton  
Sue Henry and Carter Phillips  
Daniel Korengold and Martha Dippell  
Herb and Dianne Lerner  
The Revada Foundation of the Logan Family

B. Thomas Mansbach  
David and Martha Martin  
Ilene and Steven Rosenthal  
Mr. and Mrs. Richard W. Snowden  
Sheila Stampfli

## LEADERSHIP CIRCLE

Jeff Busch  
Jeri and Gary Epstein  
Stephanie Foster  
Larry Franks and Ellen Berelson  
Virginia McGehee Friend  
Vicki J. Hicks  
Alethia Jackson  
Thomas Jesulaitis and Barrie Seidman  
Ricki and Joel Kanter  
John and Lenora Lynham  
Dr. Jill E. McGovern  
Richard and Janice Newman  
Melanie and Larry\* Nussdorf  
Mr. and Mrs. Robert P. Pincus  
Thalia Sinnamon in memory of Lyn Sinnamon  
Leonard Sirotka and Eileen Ivey  
Hon. Michael Steele

## PRESIDENT'S CIRCLE

Erin and Derek Arrison  
Eric Braverman and Neil Brown  
Ellen MacNeille Charles  
Joseph P. DiGangi  
Edgar and Tracy Dobie  
Vivian B.\* and Lisa D. Eggers  
David C. Frederick and Sophia Lynn  
Patti and Mitchell Herman  
Sheldon Katz  
Mark Levine and Sara Imershein  
Mark T. Lewellyn  
Nancy and Dan Longo  
The Robert and Natalie Mandel Family Foundation  
R. Lucia Riddle and William Reddick

Margaret Ann Ross  
William and Linda Rule  
Peggy and Alec\* Tomlinson  
Joseph and Linda Young

## PRODUCER'S CIRCLE

Anonymous (2)  
Keith and Celia Arnaud  
Judith N. Batty  
Nan Beckley  
Sharon Bennett MD  
Bonnie C. Carroll and Roy Cooper  
Gail Chambers and Scott Baker  
Richard H. Cleva  
Kathy and Judy Dreyfuss  
Meg and John Hauge  
Donald E. Hesse and Jerrilyn Andrews  
Judy Honig and Stephen Robb  
David Insinga and Robert McDonald  
Dr. Donald Wallace Jones, Dr. Betty Jean Tolbert  
Jones and Tracey Tolbert  
Caroline S. Klemp  
Jean and John Lange  
Ray Olson  
Craig Pascal and Victor Shargai\*  
Janis Reed and Jack Requa  
Aileen and Jack Sullivan  
Suzanne Thouvenelle and Dennis Deloria  
Virginia D. Weber  
Steve and Irene White  
Richard and Leslie Wojciechowicz

## DIRECTOR'S CIRCLE

Anonymous (3)  
Jim and Mai Abdo  
Friend of Arena  
Dr. and Mrs. C. Wrandle  
Barth  
Sander M. Bieber and Linda E. Rosenzweig  
Lucille A. Bland  
Constance Bohon MD  
David and Judy Bonior  
Joe and Sue Bredekamp

Jere Broh-Kahn  
Blain and Peg Butner  
William Caldwell and Michele Toth  
John Chester  
Debbie and Adam Cohen  
Beth Cunningham and David Wolfe  
James and Dorothy Dake  
Belle N. Davis in memory of Martin "Marty" Davis  
John and Linda Derrick  
John Edelman and Jeff Love  
Trudy Fleisher  
Mr. Gary Fontaine  
Bill and Linda Garvelink  
Gregg H. S. Golden  
Carol and Bill Gross  
Susan B. Haight  
Laura Hart  
Holly Hassett  
Paul R. Henderson  
Martin and Nene Hill  
Richard and Pamela Hinds  
Theo W. Hodge Jr., MD and Frederick Eugene Taylor, Jr., AIA  
John and Anne Holman  
Lauren\* and Glen Howard  
Whitney Hubbard  
Dr. James and Deborah Karesh  
Cal and Barbara\* Klausner  
Barry Kropf  
Drs. Susan and Perry Klein  
Thelma K. Leenhouts  
Caroline Lewis  
Vicky Marchand  
Steve Mayer and Vera Oye\*  
Yaa-Anna  
Ryan E. Merkel  
Richard and Erin Mills  
David Montgomery  
Meenakshi and Arvind Nandedkar  
R. Frances O'Brien and Stephen Flott  
Marina and David Ottaway  
James T. Parson, Jr.  
Toni and Ronald Paul  
Laura Peebles and Ellen Fingerman  
Ann and Terry R. Peel  
Alan Perkins and Barbara Bonessa

## CONTINUE SUPPORTING THE ARTS LEAVE A LEGACY HERE AT ARENA STAGE

Everyone needs an estate plan to ensure their assets benefit the people and causes they value the most. Please consider leaving a gift in your will or designating Arena as a beneficiary of your retirement plan or Donor Advised Fund to help future generations enjoy theater. If you have already included Arena, let us know so we can include you in the Full Circle Society.

For more information, contact **Maya Weil, CAP®**, Arena's Gift Planning Specialist at 202-600-4158 or [mweil@arenastage.org](mailto:mweil@arenastage.org)



Mazel Pernel  
 Paula and William Phillips  
 Mr. Michael Pollard and  
 Mrs. Penelope Pollard  
 Gail Povar and Larry  
 Bachorik  
 Franklin D. Raines and  
 Denise Grant  
 Mary Ann Re  
 Nancy Regan  
 Gerald and Sara Robinson  
 Jill and Rick Robinson  
 Trina and Lee Rubenstein  
 Blair and Sally Ruble  
 Deborah Rutter  
 Jo Ella Samp  
 Jean Schiro-Zavala and  
 Vance Zavala  
 Raymond and Deborah  
 Sams Sczudlo  
 McAdo Shuler, Jr.  
 Dave Steadman  
 Robert J. Surovell  
 Barbara Toohill  
 Mary Vavrina  
 Shawna Watley  
 George and Patti White  
 Bill and Terry Witowsky  
 Deborah and David Yaffe  
 Jane Yanulis  
 Judy and Leo Zickler

#### PLAYWRIGHT'S CIRCLE

Anonymous (6)  
 General Clara Adams-Ender  
 Julie Alderman Boudreau  
 Garland Allen  
 The Estate of Dr. and Mrs.  
 Clement C. Alpert  
 Dean Amel and Terry  
 Savella  
 Chris Andreas  
 Janet and David Batlan  
 Sue Benson  
 Yvette Benton Bullock  
 Robert C. and Elissa B.  
 Bernius  
 Michelle Brown  
 Candice C. Bryant  
 Susan and Dixon Butler  
 William and Kathleen Carey  
 Dr. Myla Carpenter  
 Carla Cartwright  
 Justine Casselle  
 Lynne H. Church  
 Victoria Clark Hunter  
 Jeremy and Stefanie Cohn  
 Karen and Joseph Coleman  
 Wilson Compton  
 Valerie and John Cuddy  
 Deanna K. Dawson  
 Nancy Dawson  
 Cynthia J. Decker  
 The Charles Delmar  
 Foundation  
 Dr. Gloria J. Edwards  
 Dr. James Ellyz and Mr.  
 Francis O'Malley  
 The Farmer Family  
 Geraldine Feaster and  
 "Calvin Bethea"  
 Lorraine Fleming and Harry  
 Parrish  
 Ellen Fox MD  
 Mr. and Mrs. Davis R.  
 Gamble Jr.  
 Lenue and Barbara  
 Gilchrist  
 Eileen M. Gleimer  
 Amnon and Sue Golan  
 Sally W. Gresham  
 Gail Gulliksen  
 Chris Harris  
 Patricia Harvey  
 Doris Hausser  
 Shawn C. Helm and J.  
 Thomas Marchitto  
 Neeta Helms  
 Ms. Margaret Hennessey  
 Arthur Hyland and Suzanne  
 Jenkins  
 Mark Irion and Cindi  
 Merifield  
 Linda Irizarry  
 John Iwaniec and Tracy  
 Gray  
 Dr. and Mrs. William B.  
 Jackson II  
 John Keator and Virginia  
 Sullivan  
 Kyle Kerr and Stephen  
 Bique  
 Tuke and Pierce Klemmt  
 Lauren S. Kogod  
 Leslie S. Kogod  
 Ms. Jane Mary Kwass  
 Benjamin Lang  
 Carrie and Howard  
 Langsam  
 Ashley J. Lawrence  
 Stuart and Brock Lending  
 Sam and Ellen  
 Laird Lott and Linda  
 Gooden  
 Jim and Sharon Lowe  
 Lorraine and Craig Martin  
 Mary Martin  
 C. Wakefield Martin and  
 Paula S. Thiede  
 Mark and Marsha Mazz  
 Susan Hall McCannell  
 Steve and Sylvia Moore  
 Martha Newman  
 Frank and Linda Nutter  
 Kay A. Oliver, Ph.D.  
 Joe Oppenheimer and  
 Edith Fraser  
 Anne Paine and Fowler  
 West  
 Lauren Pate  
 Howard and Dorothy  
 Pedolsky  
 Judy Perry, Col (USAF  
 Retired)  
 Sasha Pierre-Louis  
 Dr. and Mrs. Nathaniel Pitts  
 Steven Polakoff  
 Margaret Pollack and Paula  
 Reed Lynch  
 Marjorie Lynne Powell  
 Ane Powers  
 Lutz Prager and Pat Lark\*  
 Vincent and Nancy Radosta  
 Mr. and Mrs. Thomas J.  
 Reckford  
 Elise and Dennis Reeder  
 Christopher Robinson  
 Gareth Rosenau  
 Bruce and Lori Laitman  
 Rosenblum  
 Cathy Rutherford and Lisa  
 Levine  
 Jeff and Ellen Sandel  
 Carol Schwartz  
 Linda and Arthur Schwartz  
 Richard and Jacqueline  
 Sellers  
 Erin P. Shannon  
 Lisa and Jim Shannon  
 Hana Sharif  
 Elizabeth Lavette Shorb  
 Bobbi and Larry Shulman  
 Mark and Merrill Shugol  
 Eugene and Kelly Soh  
 Mike and Patti Sipple  
 Laura Smaligan and Eric  
 Sandberg-Zakian  
 Annelise and Robert H.  
 Smith  
 Lisa and Chris Smith  
 Carl Wayne Smith and  
 Michael Burke  
 Lawrence and Arlene  
 Spinelli  
 Cecile Srodes  
 Greig Stewart and James  
 Hudson

Bill Swedish and Linda  
 Griggs  
 Eileen and Michael Tanner  
 Ryan Neels Terry and Louis  
 Loh  
 Linda and Steuart Thomsen  
 Laura L. Tosi  
 John and Val Wheeler  
 Jack and Sue Whitelaw  
 Debbie and Daniel Williams  
 Jon and Sandra Willen  
 Jeffrey and Johanna Zinn

#### LEAD

Anonymous (10)  
 Dr. and Mrs. Nelson  
 Adamson  
 Jenna and Bill Allen  
 Hon. Frank and Mrs.  
 Antoinette Almaguer  
 Tonia and Scott Anderson  
 Virginia Anthony  
 Kathy and Lawrence  
 Ausubel  
 Michael Baker  
 Ann and Mal Barasch  
 Anna K. Behrensmeier  
 Karen Beiley and Eric  
 Fingerhut  
 Elizabeth L. Blakeslee  
 Dr. and Mrs. Gerald Borsuk  
 Anne Boyden  
 David Barkley and Jeffery  
 Wingate  
 Rita Braver Barnett  
 Diane Brown  
 Dr. Adrienne Brown  
 Harold R. Bucholtz  
 Donna Butts and William  
 Libro  
 Ms. Patricia Carter  
 Cecilia M. Chandler  
 Nancy Chesser and J.M.  
 Rowe  
 Jo Ann and Wesley Chin  
 Angela Clark  
 Reese Cloyd  
 The Manny and Ruthy  
 Cohen Foundation  
 Michael Crosswell  
 Johanna S. Cummings in  
 memory of Ian Cummings  
 Mr. and Mrs. Philip Currie  
 Richard Dagen  
 Julie Davis and Clyde  
 Relick  
 Pat Davis and Wes  
 Callender  
 Lorraine Day  
 Angela Dickey and Patricia  
 Norland  
 Althea Dixon  
 Don Douglas and Carolyne  
 Weil\*  
 Cheryl Draggio  
 John Driscoll  
 Sue Duncan and Leo Fisher  
 Mrs. Elizabeth Edgeworth  
 Rick and Renee Edson  
 Evelyn and Barry Epstein  
 Mr. and Mrs. Michael Flyer  
 Allan D. Friedman  
 JoEllen and Martin Frost  
 Charles A. Fulton  
 Richard Gervase and Stuart  
 Delery  
 Amy C. Gilbert  
 Aaron Glick  
 Mark\* and Sara Goldberg  
 Paula S. Goldman  
 John M. Goodman  
 Andrew and Sharon Goods  
 Janet Hall Graff  
 The Greene-Milstein Family  
 Foundation  
 Bob Gronenberg  
 Jack E. Hairston Jr.

The Honorable Robert and  
 Susan Hale  
 Robert and Barbara Hall  
 Robert and Carol Hall  
 Mr. and Mrs. Peter D. Hart  
 Ms. Barbara Hawthorn  
 Harold L. Hickson  
 Liz Hilder and Randy Smith  
 Lucia and Fred Hill  
 Jessica Hirschorn and  
 Henry Howard, Jr.  
 Clarence G. Hoop  
 John and Debra Howard  
 The Katherine Lindsay  
 Howell Fund  
 Drew Huffman  
 Ms. Lyn Ingersoll  
 Patricia Jackman and  
 Stephen L. John  
 Norm and Anita Johnson  
 Jason Johnston  
 Wayne and Susan Jonas  
 Charlotte Jones Voiklis  
 Robin Jenkins  
 Martha L. Kahn in memory  
 of Simeon M. Kriesberg  
 Dr. and Mrs. Ron Karpick  
 Mrs. William Kingsbury  
 Mr. Frederick Leon Klein  
 Patricia and John Koskinen  
 Daphne Kwok  
 John and Jane Lewis  
 Carol Ann and Kenneth  
 Linder  
 Mrs. E. Kathleen Linville  
 David Lloyd, Realtor  
 Shirley Loo  
 Kenneth C. and Elizabeth  
 M. Lundeen  
 Susan and Dan Mareck  
 Ms. Linda Marks and Mr.  
 Rafael V. Lopez  
 Margaret Marin  
 Joanne S. Martin  
 Lou Mayo  
 Tina Mather  
 Lou Mazeway  
 Dr. Florence K. Millar  
 Sheila Millar  
 David Mitchell  
 Jim Moss  
 Marlene Moss  
 Alfred Munzer and Joel  
 Wind  
 Aaron Myers  
 Donald and Lynne Myers  
 Jeffrey Neal and Kevin  
 Loeffler  
 Nick Newlin  
 William and Louisa Newlin  
 Sheila and Ford Newman  
 Doris Parker and Michael  
 Spatz  
 Dave Pawlik and Susan  
 Albertine  
 Stan Peabody  
 Anne E. Peret  
 Daniel Pink  
 Carroll Quinn  
 Frederick Robinson  
 June A. Rogul  
 Denise A. Rollins  
 Helen Ross  
 Dr. Bernard and Louise  
 Rostker  
 Jeanne Ruesch  
 Elizabeth Sachs  
 Alan and Florence Salisbury  
 Jean Sammon  
 Evelyn Sandground and  
 Bill Perkins, in memory of  
 Frank and Marta Jager  
 Sally Simms  
 Ray Smith  
 Molly Smith and Suzanne  
 Blue Star Boy  
 Sharon Steele  
 Drs. Robert J. Stillman and  
 Linda Klieger Stillman



## A Standing Ovation

AARP celebrates the arts and artists in a variety of genres. Through our Brain Health work, we know that art keeps us mentally sharp, as it connects us and preserves our collective story. We salute the artists who inspire and uplift us with their words, artistry, and craft.



Discover more today at  
[stayingsharp.aarp.org/](https://stayingsharp.aarp.org/)

# INDIVIDUAL DONORS

Patricia Stonesifer and  
Michael Kinsley  
Dr. Sheila Taube  
Elizabeth and Jerome Teles  
Steuart and Linda Thomsen  
Elizabeth Thornhill  
Cameron and Susan  
Weiffenbach  
Walter Wentz  
Helen White and Andy  
Leighton  
Jaun Whitehead  
Jon Willen  
Robert and Gwendolyn  
Williams  
J. David Willson  
Robert Wilson

## SUPPORTING ROLE

Anonymous (17)  
Susan Absher  
Ms. Carol J. Anderson  
Victoria Arana  
Kevin Baker  
Marion S. Ballard  
James Barnes  
Mary Barton and Beth  
Biegelsen  
Edward and Iris Beckwith  
Peter and Ellen Berty  
Tom Blackburn  
Ann Blackman and Michael  
Putzel  
Edward Blanton and Rusty  
Lynn  
Nettie Bouchie  
Cynthia Boyer\*  
Steven Brady  
Kim Brailey  
Wendie Briggs  
Valerie Briggs and Peter  
Kelley  
William and Emily Brittle  
Hazel Broadnax  
Ms. Carolyn Broussard\*  
Kathy Brown in memory of  
Ted Bean  
Richard Allen Brown  
Terrence J. Brown and  
Linda D. Whitlock-Brown  
Karen Bruton  
S.M. Bumbrey  
Susan and Mike Burk  
Avery Burns  
Rev. Dr. and Mrs. Cameron  
Byrd  
Sandra and Paul Byrne  
Marni Byrum and Martha  
McQuade  
John P. Cahill  
Allayne and Brian  
Chappelle  
Tracey Chunn  
Pamela Colbert  
Ann Collins  
Brian Collins  
John and Sheila Compton  
James and Ann Connell  
Ray and Mary Converse  
Randi and Joseph  
Barbara and Paul Couture  
Janice King Crawford  
Susan M. Crawford  
Laurie Davis and Joe  
Sellers  
Christian Daubert and  
Melvin Murphy  
Lisa and Tony Delity  
Mr. Stephen Dennett  
Edward Donahue, III  
Clark and Emilie Downs  
David Dunn  
Ms. Helen Epps  
Peter and Ginger Sunday  
Evans  
Ralph and Gwendolyn  
Everett  
Gary Felser

Jill A. Fields  
Bonnie and Larry Fields  
Angelo Fiorenza  
Cathy and Donald Fogel  
Heather Foley  
Mr. Russell Fox  
Paul Frampton  
Leslie Frantz  
Catherine Gahres and  
James Woolford  
Paul Gamble  
Natwar Gandhi and Panna  
Naik  
Susan B. Garland  
Rachel Gartner  
James and Maria Gentle  
Dr. Kirk Geter  
Wayne and Laura Gifford  
Maggie Godbold and Steve  
Bershader  
Martha Goldstone  
Donna M. Gollnick  
Joyce and Richard Gordon  
Cheryl McQueen  
Palmer and Barry Graham  
Madi Green, in memory of  
Duff Green III  
Karen T. Grisez  
Sue Guenther  
Wilbur Hadden  
Daniel and Therisia Hall  
Frona Hall  
Mr. Lars Hanson and Ms.  
Rosanne LeVitre  
Jim and Ardith Harle  
Timothy Harr and Winfield  
Crigler  
Brenda Hawkins  
Rachel Hecht  
Bert Helfinstein and  
Margaret Rodenberg  
Paul Herman and Karen  
Goldman  
Jill Herscot  
Jonathan Herz and Steven  
Hill  
Dorothea Hiltenbrand  
Karen Hirakawa  
Toby Horn  
Roger and Neesa Hoskin  
Jerry Hungerman  
Heather Huyck  
Geraldine Inge  
Ann Ingram  
Corinne and Bill Irwin  
Barbara and John R.  
Jackson  
Lorie D. Jackson  
Smyrna N. Jackson  
Paul and Pam Jaikaran  
Raymond Janvier  
Diane Johnson-Quinn and  
Vincent Quinn  
Emily Johnson and Vijay  
Ramachandran  
Kenneth and Thereese  
Johnston  
Kimberly and Tad Johnston  
Robert Kain  
Robbie Katson  
Joseph and Jane Keady  
Michael Kielbiewicz and  
Barbara Strong  
Peter Kimmel and  
Stephanie Jackson  
Kenneth and Carol Doran  
Klein  
Emily Irish Kohler  
Mary Lou and Jack Kramer  
The Drs. Sharon and Dan  
Kuebbing  
Paul Kung  
Justin Latius  
Allan and Sondra Laufer  
Robin Lee  
The Lee-Verdon Family  
Philip and Lisa Leibow  
Steve Leinwand and Ann  
Lawrence

Dave Levy  
Michael and Paula Levy  
Dr. and Mrs. Randall J.  
Lewis  
Chris and Christine Magee  
Martin Malsch and Jane  
Axelrad  
Harry Manin  
Captain Lory Manning USN  
(RET)  
Hon. John E. Mansfield  
Elizabeth H. Margosches  
Carol Marsh  
Steve Marsh  
Michelle Mason  
Russell Matthias  
Hans and Marianne Mayr  
William McBride and Susan  
Caporaso McBride  
Elizabeth Ann McGrath  
Margaret McKelvey and  
William Harkins  
Sarah McMeans  
Cheryl McQueen  
Terry and Tom Melo  
Lenore Meyers  
Peter and Kathy Michelman  
Sandy Mitchell  
William and Sheila Moore  
Mary Beth Moore and  
Douglas Ruby  
Bob and Wendy Morris  
Mr. Robert J. Morse  
Robert and Mimi Morse  
Helaine G. Morss  
Delphine Motley  
Jack Moyer and Jane  
Passman  
William Muddiman  
Marilyn L. Muench  
Sara Najjar-Wilson  
Hedy Nash and John  
Wetterau  
Ms. Laurence Nolan  
Louise Novitch  
Jeri and Bill Oakerson  
Col and Mrs. Tommy T.  
Osborne  
Lydia and Sandy Parnes  
Wilson and Deborah Parran  
Bill and Jenny Pate  
Scott Pearson  
Michael Perel and Jeanne  
Kadet  
Jeanne and Burnie Peters  
Margaret and Carl Pfeiffer  
Sophia Phillips  
Gavin Pinchback  
Shelly Porges  
Wendell and Kathy Primus  
Catherine Remijan  
Maria Farese Rendine  
Dennis Renner  
Richard B. and Constance  
Rhind Robey  
Marietta S. Robinson  
Dr. Tommie L. Robinson, Jr.  
Paul Rose  
Setsuko Rosen and Robert  
Luther  
Steven M. Rosenberg and  
Stewart C. Low III  
Herbert and Nancy  
Rosenthal  
Sheryl Rosenthal and Marty  
Bell  
Kenneth and Chris Sale  
Carol Sadler and Steve  
Geimann  
Linda B. Schakel  
Susan Scheider  
Richard Schiller  
Dr. Frederick\* and Peri  
Schuyler  
Jennifer Segal  
Sandra and David Sellers  
Charlotte Selton  
Skip and Dee Seward  
Barbara Sloan

James A. Smailes  
Donald M. Smith and Claire  
L. Filemyr  
Pamela Brown Smith  
Stephen and Maureen  
Spasseff  
Rochelle Steinberg (Shellie)  
Peter and Ann Tanous  
Ruth Tate  
Rassoul Teimouri  
Dennis and Rosalind  
Thomas  
Deborah Thompson  
Mr. Al Thomson and Ms.  
Carol Michaelsen  
Patricia Thorne  
Juergen Tooren  
Rita C. Toscano  
Roger and Elizabeth  
Transgrud  
Angela Tucciarone  
Kathryn Turner  
Lyman G. Van Nostrand  
Dr. Carolyn Peoples Veiga  
Steve Verna  
Geoffrey and Susan Vincent  
Ms. Maria Wagner  
Kathy Waldman and Steve  
Sabat  
Michael Waldman and  
Linda Coe  
Howard Walgren and Lee  
Allen  
Richard and Joann Weiner  
Helene Weisz and Richard  
Lieberman  
Greg and Mary Whitman  
Robert and Barbara  
Whitten  
Linda Jepsen Willen  
Bernetta and Kevin Williams  
Jean and Sam Williams  
Patricia Page Williams  
Frank Winfield  
Antoinette WinklerPrins  
Karla Winters  
David Woodson  
Elaine Wunderlich  
Edith Wyeth  
Adrienne Wyker  
Karen and Todd Yoder  
David Young  
Karen Zacarias and Rett  
Snotherly  
Victor Zitel

\*Deceased

**Legend:**  
**Ovation Circle**  
\$100,000 and above

**Founder's Circle**  
\$50,000-\$99,999

**Benefactor's Circle**  
\$25,000-\$49,999

**Leadership Circle**  
\$15,000-\$24,999

**President's Circle**  
\$10,000-\$14,999

**Producer's Circle**  
\$6,000-\$9,999

**Director's Circle**  
\$3,000-\$5,999

**Playwright's Circle**  
\$1,500-\$2,999

**Lead**  
\$700-\$1,499

**Supporting Role**  
\$350-\$699





exelon<sup>SM</sup>

# We Share Your Dream for the Future

Powering our communities is just the beginning. At Exelon, we consider it our responsibility to improve the quality of life for people in the communities where we live, work and serve. Participation in good corporate citizenship is an integral part of our culture, and we inspire our employees to help everyone succeed.



# INSTITUTIONAL DONORS

The vital support Arena Stage receives from many institutions makes our work possible. We thank those who have generously donated \$1,500 or more to our Annual Fund campaign this year. This list represents supporters as of September 30, 2025.

## OVATION CIRCLE

PAUL M. ANGELL  
FAMILY FOUNDATION

DIANE & NORMAN  
BERNSTEIN  
FOUNDATION

Bloomberg  
Philanthropies

DC COMMISSION ON ARTS & HUMANITIES

Mellon  
Foundation

U.S. COMMISSION OF FINE ARTS  
ESTABLISHED BY CONGRESS 17 MAY 1910

SHUBERT  
FOUNDATION INC.

Anonymous

## FOUNDER'S CIRCLE

AARP®

THE MORRIS AND GWENDOLYN  
CAFRITZ FOUNDATION

Share Fund

## BENEFACTOR'S CIRCLE

BANK OF AMERICA

BERNSTEIN  
PEOPLE FIRST

CLARK  
CONSTRUCTION

exelon™

deLaski Family Foundation  
William S. Abell Foundation

## LEADERSHIP CIRCLE

amazon GLENMEDE

Let's ride together  
OURISMAN  
AMERICAN CYCLES

Anonymous  
The Theodore H. Barth Foundation, Inc.  
Dallas Morse Coors Foundation for  
the Performing Arts

## PRESIDENT'S CIRCLE

Alice Shaver Foundation  
BakerHostetler LLP  
Boston Consulting Group  
Dimick Foundation  
Mars Foundation  
S&R Evermay  
Southwest Business Improvement District  
The Morgan Fund at Seattle Foundation  
Venable Foundation

## ARENA STAGE'S OFFICIAL RESTAURANT PARTNER

Philippe  
by Philippe Chow

## WITH ADDITIONAL SUPPORT FROM

The Davis/Dauray Family Fund  
Friends of Southwest DC  
Hattie M. Strong Foundation  
The Nora Roberts Foundation  
Enterprise Mobility Foundation  
The Howard and Geraldine Polinger Foundation  
ArentFox Schiff  
Giant Food, LLC  
Potomac Law Group, PLLC  
Wawa Foundation

### Legend:

Ovation Circle.....\$100,000 and above  
Founder's Circle.....\$50,000-\$99,999  
Benefactor's Circle.....\$25,000-\$49,999  
Leadership Circle.....\$15,000-\$24,999  
President's Circle.....\$10,000-\$14,999

Please contact the Development Office at 202-600-4177  
for more information about joining the Inner Circle or  
becoming an institutional sponsor.

We endeavor to provide a complete listing of all donors  
in the above categories. If you name is not listed, please  
contact the Development Office.

We are also grateful to the thousands of other  
contributors to Arena Stage, whose names space will  
not permit us to print.

## ARENA STAGE THEATER STAFF

Artistic Director.....Hana S. Sharif  
Executive Producer .....Edgar Dobie  
Founding Director .....Zelda Fichandler  
(1924-2016)  
Founding Executive  
Director .....Thomas C. Fichandler  
(1915-1997)  
Artistic Director Emeritus .....Molly Smith

## ADMINISTRATION

Chief of Staff.....Alison Irvin  
Chief Financial Officer.....Judy Leventhal  
HR Manager.....Rachel Harrington  
Controller.....John Monnett  
Accounting Manager.....Christopher Murk  
Staff Accountant.....Mark Runion  
Payroll & HR Administrator.....Tyra Picazo  
Human Resources Consultant.....Lighterfly:  
Susan Shin, Jill Hulnick, Stella Lim  
Auditors.....Marcum LLP  
Legal Counsel.....ArentFox Schiff LLP;  
Kramer Levin Robbins Russell

## ARTISTIC

Senior Director of Artistic Strategy  
and Impact.....Reggie D. White  
Casting Director/Line Producer.....Rayvon Hunter  
Artistic Producer/Executive  
Coordinator .....Hannah Viederman  
Artistic Associate.....Misy Singson  
Artistic Fellow .....Nakkia Smalls\*  
Casting Intern.....Tyandria Jaaber  
Current Commissioned  
Writers .....Daniel “Koa” Beaty,  
The Bengsons, Lee Catalanua,  
Jeremy Cohen, Noah Diaz,  
Lady Dane Figueroa Edidi, Emily Feldman,  
Idris Goodwin, Caleen Sinnette Jennings,  
Deepak Kumar, The Pack, Octavio Solis,  
Vera Starbard, Cheryl West, Whitney White,  
Lauren Yee. Karen Zacarias. Zack Zadek

## BUILDING OPERATIONS

Director of Facilities and Operations.....Keaun Windear  
Building Technician .....Anthony Wade  
Maintenance Assistant .....Tevin Smith  
Porter .....Lawrence Wise  
Stage Door Attendant .....Kay Rogers  
Environmental and Security Services.....SWBID

## COMMUNITY ENGAGEMENT

Director of Community Engagement ..... Sean-Maurice Lynch  
Camp Programs Director..... Rebecca Campana  
Community Engagement Producer .....Tiffany Fulson  
Learning Engagement Manager..... Katie Campbell  
Training Programs Manager .....Zoë Hall  
Learning Engagement Coordinator .....Kayla A. Warren  
Learning Engagement Fellow.....Wonnies Kim\*  
Assistant Community Engagement Producer ..... Kimberly Scott  
Community Partnership Fellow .....T'Niya Wilson\*  
Community Engagement Intern .....Jamal Richardson\*\*

## DEVELOPMENT

Interim Chief Development  
 Officer ..... Betsy O. Anderson  
 Director of Development Operations  
 and Events ..... Maria Corso  
 Director of Strategic  
 Philanthropy ..... R. Wesley Meekins  
 Associate Director of Institutional  
 Partnerships ..... Abigail Cady  
 Membership Manager ..... Lauren Lopaty  
 Gift Planning Specialist ..... Maya Weil  
 Institutional Partnerships  
 Specialist ..... Mary Helen Pryal  
 Membership Assistant ..... Oscar León  
 Development Operations and  
 Events Assistant ..... Mina Sollars  
 Development Fellow ..... Tiani Thorne\*

## GENERAL MANAGEMENT

General Manager..... Alicia Sells  
Associate General Manager..... J.P. McLaurin  
Interim Company Manager.....Bowen Fox  
General and Production  
Management Coordinator.....Jenna Murphy  
General and Company  
Management Fellow.....Madalyn Oliver\*  
General and Company  
Management Intern.....Toryn Wilson\*\*

## INFORMATION TECHNOLOGY & SYSTEMS ADMINISTRATION

Information Technology  
Consultant ..... RenTec Solutions:  
Travis Armbuster (Director),  
Tima Theppakdee (Help Desk Tier II),  
Jime Marquez (Help Desk),  
Jarrett Poole (System Administrator)

## MARKETING & COMMUNICATIONS

Director of Marketing & Communications..... Ashton Beck  
Associate Director of Marketing & Communications.....Ryan Impagliazzo  
Senior Graphic Designer .....Jenny Hwang  
Content and Email Specialist.....Gaby Castro-Rodriguez  
Public Relations Specialist.....Anastasia St. Hilaire  
Graphic Designer .....Kristopher Ingle  
Marketing & Communications Coordinator .....Destiny King  
Marketing & Communications Fellow .....Byron Escobar\*  
Multimedia Design Fellow .....Anita Emokpae\*  
Marketing Intern .....Khalyla Semexant\*\*

## PRODUCTION

Senior Production Manager.....Jeffery C. Bazemore  
Assistant Production Manager.....Rachel Crawford

## STAGE MANAGEMENT

Resident Production Stage Manager.....Christi B. Spann

## SCENIC

Technical Director.....Travis Smith  
Associate Technical Director .....Ryan Lasich  
Scene Shop Supervisor.....Frank Miller  
Stage Supervisor.....Hannah Martin  
Scenic Charge Artist.....Colleen Doty  
Scenic Artist.....Misha Rodriguez  
Carpenters.....Erick Boscana, Matthew Grisdel, Julia Junghans, Max Marshall, Logan McDowell, Lily Rehberg

## PROPERTIES

Properties Director.....Jennifer Sheetz  
Associate Properties Director .....Jonathan Borgia  
Head Props Artisan .....Niell DuVal  
Props Artisan.....Kyle Handziak  
Props Assistants.....Erica Feidelseit, Kayla Prough

## LIGHTS

Lighting Supervisor .....Paul Villalovoz  
Electricians.....Scott Folsom, Kelsey Swanson, Nicole Trantum  
Lighting Fellow .....Emily Pan\*

## SOUND

Sound and Video Supervisor.....GW Rodriguez  
Associate Sound and Video Supervisor.....Di Carey  
Sound Technicians.....Alex Cloud, Kirubell Seyoum

## COSTUMES

Costume Director.....Joseph P. Salasovich  
Interim Costume Director.....Cierra Coan  
Drapers.....Seth Gilbert, Michele Macadaeg  
First Hands.....Elizabeth Spilsbury, Lilliana Valentin  
Craftsperson.....Deborah Nash  
Wardrobe Supervisor.....Alice Hawfield  
Wigs, Hair, and Makeup Supervisor.....Jaime Bagley  
Dressers.....Caitlin O'Brien, Sabrina Simmons  
Costumes Fellow.....Grace Guzman\*

## SALES & AUDIENCE SERVICES

### SALES OFFICE

Director of Sales Services.....Caroline Hunt  
Sales Operations Specialist & Executive Assistant .....Sabrina Zillinger  
Ticketing Systems & Tessitura Manager.....Aaron Hutchens  
Manager of Sales Services.....Hannah Damanka  
Assistant Managers of Sales Services .....Keshawn Connor, Ellie Pline  
Sales & Audience Services Associates.....Sydné Marie Chesson, Jordan Leah Embrack, Colin O'Bryan, Paul Pelletier Jr., Lara Rogers Benchoam

### GROUP SALES

Lead Manager of Group Sales.....Donald Jolly

### AUDIENCE SERVICES

Director of Audience Services .....Andrew Rampy  
House Managers .....Vicky Kobelka, Bruce Perry, Zachary Radhuber  
Additional Staff for this Production .....Stephanie Atkinson, Alex Butler, Grant Collins, Chris Courtney, Tristin Evans, Bria Hall, Dalton Lamberth, Hayley McGuirl, Frances Pepper

### EVENTS & RENTALS

Events & Rentals Coordinator .....Jasmine Martin  
Event Consultant .....Kaitlyn Sakry

### MERCHANDISING, FOOD, & BEVERAGE

Associate Director of Merchandising & Guest Experience.....Jody Barasch  
Lead Bartenders.....Edwin Cortez, Imani Pugh, Erika Wallace  
Bartenders.....Mary Ann Anderson-Garlic, Tristan Evans, Greg Gonzales, Rachel Halili, Megan Neftali, Kaitlyn Sakry, Brad Teague

\* 2025/26 Class of the Allen Lee Hughes Fellowship Program

\*\* Howard University Creative Arts Administrators Intern





# When life doesn't stick to the script, **we're here for you.**

From our connected urgent care network and on-demand 24/7 telehealth to lifesaving specialty care, we're here when and where you need us.

Behind every visit at MedStar Health is a team of top-rated providers, who together make up one of the region's most respected health systems.

**It's how we treat every patient...with the best of our hearts,  
and the best of our minds.**

**It's how we  
treat people.**



MedStar Health