

2025/26 SEASON



*Damned*  
**YANKEEES**

A poster for the musical "Damned Yankees" featuring a black and white photograph of a baseball stadium filled with spectators. The title "Damned Yankees" is overlaid in a large, stylized red font. "Damned" is in a script font, and "YANKEEES" is in a bold, blocky font with a distressed, splattered texture. A thin red arc frames the text.

**SEPTEMBER 9 – NOVEMBER 9**



2025/26 SEASON

# Coming Up Next



A SOULFUL NEW DRAMATIC-COMEDY  
ABOUT LOVE, LEGACY, AND, OF COURSE,  
A CUTTHROAT GAME OF SPADES.

OCTOBER 8 – NOVEMBER 23

[ARENASTAGE.ORG/FREMONT](https://arenastage.org/fremont)

THE STAKES ARE HIGH, THE JAZZ IS  
HOTTER, AND AMBITION NEVER  
SOUNDED SO GOOD.

JANUARY 30 – MARCH 15

[ARENASTAGE.ORG/JOEY](https://arenastage.org/joeys)

Music by **Richard Rodgers**

Lyrics by **Lorenz Hart**

Book by **Richard LaGravenese**

Based on John O'Hara's 'Pal Joey' stories published in *The New Yorker*

Choreographed by **Savion Glover**

Co-Directed by **Savion Glover** and **Tony Goldwyn**



INHERIT  
THE WIND



THE DEBATE THAT  
SHOOK THE NATION.

FEBRUARY 27 – APRIL 5

[ARENASTAGE.ORG/INHERIT](https://arenastage.org/inherit)

By **Jerome Lawrence** and **Robert E. Lee**

Directed by **Ryan Guzzo Purcell**

*Bold Stories  
Real Theater*

[ARENASTAGE.ORG/75](https://arenastage.org/75)



# TABLE OF CONTENTS

- 5 Artistically Speaking
- 7 From the Executive Producer
- 8 Dramaturgy Note
- 11 Title Page
- 13 Cast
- 14 For This Production
- 15 Musicians
- 16 Setting/Musical Numbers
- 17 Producing Partners/Special Thanks
- 19 Bios — Cast
- 25 Bios — Creative
- 32 Bios — Arena Stage Leadership
- 33 Board of Trustees/Young Patrons Board
- 34 Thank You — Full Circle Society
- 35 Thank You — Individual Donors
- 41 Thank You — Institutional Donors
- 42 Theater Staff

## ARENA STAGE

1101 Sixth Street SW  
Washington, DC 20024-2461  
ADMINISTRATION 202-554-9066  
SALES OFFICE 202-488-3300  
arenastage.org

©2025 Arena Stage.  
All editorial and advertising material  
is fully protected and must not be  
reproduced in any manner without  
written permission.

*Damn Yankees* program book  
published September 9, 2025.

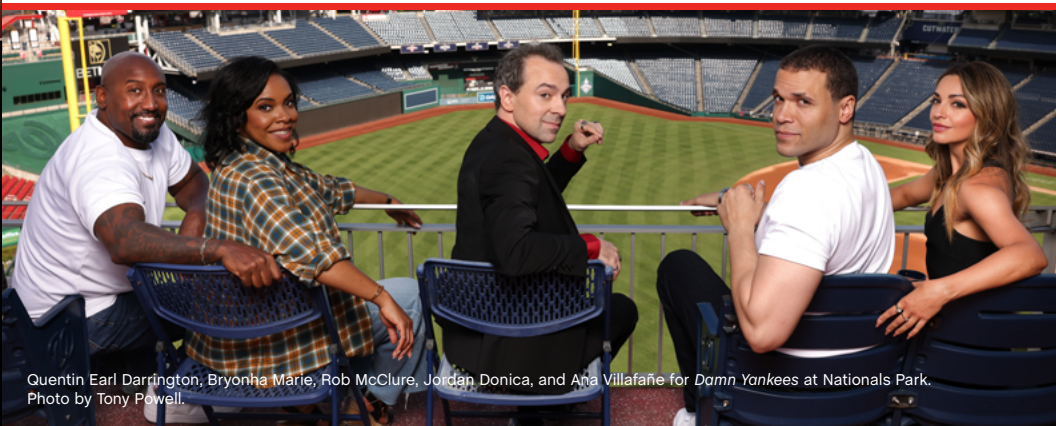
## PROGRAM BOOK STAFF

Ashton Beck,  
Director of Marketing &  
Communications

Ryan Impagliazzo,  
Associate Director of Marketing &  
Communications

Jenny Hwang,  
Senior Graphic Designer

Kristopher Ingle,  
Graphic Designer



Quentin Earl Darrington, Bryonna Marie, Rob McClure, Jordan Donica, and Ana Villafañe for *Damn Yankees* at Nationals Park.  
Photo by Tony Powell.



WIFI NETWORK:  
**ArenaGuest**

PASSWORD:  
**arenaguest**

## SHARE YOUR EXPERIENCE!



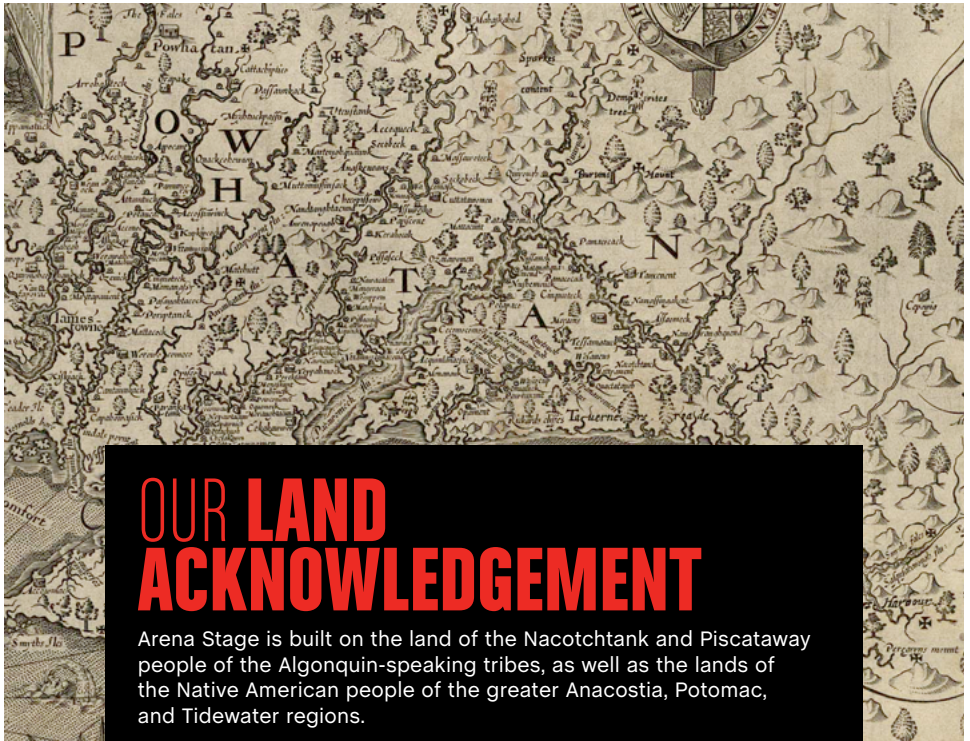
@arenastage  
@damnyankeesbroadway

#ArenaStage #ArenaStageDC #ArenaYankees



# ARENA STAGE'S MISSION

Arena Stage is the voice of American theater resident in our nation's capital. Focused on American artists, our productions are innovative and representative of stories from across the country. We nurture new plays and reimagine classics. We celebrate our democracy and diversity through a multitude of voices in our productions and community engagement programs to inspire people to action. We produce all that is passionate, exuberant, profound, entertaining, deep and dangerous in the American spirit.



## OUR LAND ACKNOWLEDGEMENT

Arena Stage is built on the land of the Nacotchtank and Piscataway people of the Algonquin-speaking tribes, as well as the lands of the Native American people of the greater Anacostia, Potomac, and Tidewater regions.





## ARTISTICALLY SPEAKING

When Arena Stage first opened its doors 75 years ago, Zelda Fichandler dared to imagine something bold: a theater in Washington, DC that served as a reflection of this city's soul, created by its people and for its people.

That pioneering vision transformed a converted movie house into one of the nation's first resident theaters, a home where artists and audiences could come together to wrestle with ideas, to celebrate community, and to dream beyond the familiar.

As I began to curate this milestone season, I searched for a story to open the season that could reflect the breadth of our shared history and the promise of our evolving future. A conversation I had years ago with the brilliant playwright and performer Will Power immediately came to mind, where he mentioned he and the legendary Doug Wright were working on a revival of *Damn Yankees*. Certain that this Golden Age musical was the perfect story to launch Arena's 75th Anniversary Season, I called Will up, and this vibrant reimagining began its incredible path to the Fichandler Stage.

In 1955, the world premiere of *Damn Yankees* took the country by storm, catalyzing the iconic kinetic partnership between Bob Fosse and Gwen Verdon and offering a fatigued country an opportunity to gather together again in collective awe, joy, and laughter. Baseball, in all its mythic Americana, provided a shared rhythm of hope—echoing from neighborhood stoops, carried over radios, and celebrated under stadium lights. *Damn Yankees* captured the heartbeat of a country in need of a north star and wrapped it in irresistible melodies that remind us: second chances are always worth chasing.

To bring *Damn Yankees* into this modern moment is to ask fresh questions of its familiar Faustian story: what are the stakes of the combustible combination of ambition, love, passion, and the powerful yearning of an unrealized dream?

From our very first conversation, Sergio Trujillo—Tony Award-winning director and choreographer—understood that this would not be a revival, but, in his words, a “revisal.” Alongside Will Power, Doug Wright, and Lynn Ahrens, Sergio was intent on preserving the beating heart of the original while infusing it with new vitality. Together, they have refracted the lens, expanding who is at the center of the story and illuminating new dimensions of the narrative to allow for a richer chorus of voices to be heard.

This *Damn Yankees* is more than a musical. It's a reminder of what draws us together: the risks we take for love, and the hope we share in second chances.

Thank you for joining us at the premiere of Arena's 75th season. Thank you for standing in the tradition of Zelda's bold vision, and for helping us write the next chapter of this extraordinary journey. We're so glad you're here.

With gratitude,

**Hana S. Sharif**  
Artistic Director

Arena Stage  
Washington, DC

**CLARK**  
CONSTRUCTION

**Proudly Shaping  
the Local Landscape**



## FROM THE EXECUTIVE PRODUCER

I'm excited to begin Arena's 75th Anniversary Season with *Damn Yankees*, a perfect launching pad for a milestone season: a story full of heart and people who join together around a shared love and need to "conspire"—breathe as one. The cast behind the scenes at Arena Stage is likewise full of heart and united in dedication to telling stories just like this one.

Anniversaries prompt us to look back over the years, and we will do plenty of that over the course of this season. Through these program notes, I invite you into my office. I'd like to share this space with my direct reports, to amplify voices you in our audience don't often hear and give you a glimpse of the fabulous team behind me at Arena. Consider it finding out who's on first and what's on second.

First up to bat is Chief of Staff Alison Irvin. Alison joined the team in 1994 as an intern in sales and communications. After her internship, she was hired as Assistant to the Executive Director (my predecessor Stephen Richard), and has grown in the role through Executive Assistant, Leadership Office Manager, to Chief of Staff and Corporate Secretary.

*The hardest question for me to answer is, "What do you do?" Usually, I will say I work at Arena Stage, which I acknowledge is an insufficient answer. Sometimes the next question is, "What's Arena Stage?," to which the answer is, "A theater." (A very "Who's on First?" moment.) Then the next question inevitably is, "What do you do at Arena Stage?" I always pause and think, "What do I do?"*

*It's hard to answer because my position spans a variety of skills. On the mundane end, I schedule, I coordinate meetings. I write quite a bit—much of it is formal writing like meeting minutes, notes, and letters, although there are lots of creative opportunities. I wrote a historical article on the building of the Mead Center that was published in an architectural journal. I draft and negotiate playwright license agreements. Unofficially, I've become a resource on copyright law, particularly regarding live performance. (My colleagues might say that, every now and then, I write a hilarious all-staff email.)*

*When I started, my colleague Peggy Laves was Executive Assistant to the Artistic Director—at that time Doug Wager. Before then, she had been Zelda Fichandler's assistant. Peggy celebrated 30 years with Arena in my first year. I thought that was not somewhere I would ever find myself. And yet!*

*What's amazing is that I've been allowed to grow and take on new responsibilities over the years. I've had more than one person tell me, "Your job is weird." It's fair to say that, if it wasn't, I wouldn't still be here.*

Thanks, Alison. Alison forgot to mention that she led the charge to have our block of 6th Street SW have the honorific name of Zelda Fichandler Way. Look for the brown street sign outside and say thank you to Alison, whose job is weird.

Cheers for a Happy 75th,

**Edgar Dobie**  
Executive Producer  
President of the Corporation



# THE HISTORY—AND FUTURE—OF *Damn* YANKEES

**Wright:** I was approached about a possible new version of *Damn Yankees*, and it was appealing to me, but I wasn't sure I had the expertise. I'd seen an extraordinary play that Will wrote called *Fetch Clay, Make Man* about Muhammad Ali, and I thought it was one of the most theatrical, bracing, and original works I'd seen about athletics on stage. So I instantly thought of him, and I reached out and was like, "Would you ever consider hopping on board this fast-moving train and adapting this with me?" And luckily, he said, "Yes."

**Power:** Well, I was just so honored that he reached out. I've always been a big admirer of Doug. He really inspires not just me, but a whole generation of playwrights.

I am passionate about re-exploring older stories, whether that's Greek tales or, like with *Fetch Clay, Make Man*, these historical figures that we don't know too much about. So, with *Damn Yankees*, this amazing Golden Age musical, I wanted

to see how the themes in the original show would still manifest today. We're still working with the original themes in the play.

We were interested in that time period where there is this coming together of things—the past is still there, but it's moving to the future.

**Wright:** When I was coming of age in the '80s, the '50s felt like a comparatively innocent time. There's something beautiful and innocent about the piece in the way it extols things like decency and fortitude and skill and love.

Now, when I look back at the year 2000, I think of then as an innocent time. I think of us as, in a way, a more naïve and optimistic nation in that moment than perhaps we are now.



SLIDE INTO A CONVERSATION WITH **WILL POWER** AND **DOUG WRIGHT**, PLAYWRIGHTS AND ADAPTERS OF THIS NEW VERSION OF *DAMN YANKEES*, AS THEY DISCUSS THE SIGNIFICANCE OF THE PLAY'S TIMELESS THEMES OF TRUTH, DECENCY, AND SOLIDARITY, AND THEIR DECISION TO SET THIS 1950s STORY IN THE YEAR 2000.

And that's why it's been absolutely thrilling to revisit in this piece some of what we used to believe were American verities, like truth and social justice and all those things that we were taught made the country great.

And one narrative convenience in setting it in the year 2000 is it's on record as being one of the best years for the Yankees and one of the absolute worst years for the Baltimore Orioles.

**Power:** We had a great time re-imagining who these characters are in this time period, "Who is Joe now? Who is Lola now?" It should feel like *Damn Yankees*—it's funny, it's a comedy, it's this great music—but we also tried to take the themes and make them more layered with the characters. For example, there's a character, Gloria Thorpe, who's a journalist, so if we put it in today, everyone would be on their phones. But since it's the year 2000, with almost a 1990s aesthetic, people are still very much into print journalism.

**Wright:** We've been incredibly grateful to the estate, who has granted us a lot of permission and worked with us on this piece. They've extended a generous hand in our approach to the material. As two 21st-century writers, we have gotten to walk in the footsteps of the great George Abbott and Doug Wallop, who wrote the original book. And so, for us as journeyman writers, to follow along in the path they led has been exhilarating. You learn so much from the great librettists who came before us. This has also been a kind of tutorial in the making of a classic American musical.



Photo Credits (Left to Right):

The company in the 1955 original Broadway production of *Damn Yankees*. Photo courtesy of NYPL Performing Arts for the Performing Arts.

Cindy Marchionda (Gloria Thorpe) and the company of the 2005 Arena Stage production of *Damn Yankees*. Photo by Scott Suchman.

Gwen Verdon (Lola) in the 1955 original Broadway production of *Damn Yankees*. Photo courtesy of NYPL Performing Arts for the Performing Arts.







Rob McClure, Jordan Donica, and Ana Villafañe for *Damn Yankees* at Nationals Park. Photo by Tony Powell.



**ARENA STAGE**

**HANA S. SHARIF**, ARTISTIC DIRECTOR | **EDGAR DOBIE**, EXECUTIVE PRODUCER  
PRESENTS

BY SPECIAL ARRANGEMENT WITH  
**PINNACLE PRODUCTIONS AND JULIE BOARDMAN**

***Damn***  
**YANKEES**

MUSIC AND LYRICS BY **RICHARD ADLER AND JERRY ROSS**

BOOK BY **GEORGE ABBOTT AND DOUGLASS WALLOP**

BASED ON THE NOVEL *THE YEAR THE YANKEES LOST THE PENNANT* BY DOUGLASS WALLOP

NEW ADAPTATION BY **WILL POWER AND DOUG WRIGHT**

ADDITIONAL LYRICS BY **LYNN AHRENS**

MUSIC SUPERVISION AND ARRANGEMENTS BY **GREG ANTHONY RASSEN**

DIRECTED AND CHOREOGRAPHED BY **SERGIO TRUJILLO**

SET DESIGNER  
**ROBERT BRILL**

COSTUME DESIGNER  
**LINDA CHO**

LIGHTING DESIGNER  
**PHILIP S. ROSENBERG**

SOUND DESIGNER  
**WALTER TRARBACH**

PROJECTION DESIGNER  
**PETER NIGRINI**

WIG AND HAIR DESIGNER  
**CHARLES G. LAPOINTE**

ILLUSION DESIGNER  
**PAUL KIEVE**

SCORE SUPERVISOR  
**DAVID CHASE**

ORCHESTRATOR  
**DOUG BESTERMAN**

MUSIC DIRECTOR  
**ADAM ROTHENBERG**

ASSOCIATE DIRECTOR  
**MARC TUMMINELLI**

ASSOCIATE CHOREOGRAPHER  
**BRANDT MARTINEZ**

ASSOCIATE MUSIC DIRECTOR  
**DEAN BALAN**

NEW YORK CASTING  
**THE TRC COMPANY/  
TARA RUBIN, CSA, MERRI SUGARMAN, CSA**

DC CASTING  
**RAIYON HUNTER**

STAGE MANAGER  
**CHRISTI B. SPANN\***

ASSISTANT STAGE MANAGER  
**STEFANIA GIRON ZULUAGA\***

ASSISTANT STAGE MANAGER  
**SARA GEHL\***

Support for *Damn Yankees* is provided by **Deborah Bowles and Derik Burgess**.

*Damn Yankees* is presented through special arrangement with Music Theatre International (MTI).  
All authorized performance materials are also supplied by MTI. [www.mtishows.com](http://www.mtishows.com)



Jordan Donica and Quentin Earl Darrington for *Damn Yankees* at Nationals Park. Photo by Tony Powell.

# CAST

(in alphabetical order)

Fuzzy/Ensemble.....	GIUSEPPE BAUSILIO*
Peña/Ensemble.....	RAÚL CONTRERAS*
Ensemble.....	DEANNA CUDJOE*
Joe Boyd.....	QUENTIN EARL DARRINGTON*
Joe Hardy.....	JORDAN DONICA*
Gonzalez/Ensemble.....	JOHN MICHAEL FIUMARA*
Sister/Ensemble.....	RAYANNE GONZALES*
Ensemble.....	DANIELLE MARIE GONZALEZ*
Smokey/Ensemble.....	MICHAEL HARMON*
Van Buren.....	NEHAL JOSHI*
Ito/Ensemble.....	RYO KAMIBAYASHI*
Meg Boyd.....	BRYONHA MARIE*
Ensemble.....	GEORGIA MONROE*
Welch.....	KEENAN McCARTER*
Applegate.....	ROB McCLURE*
Commissioner/Ensemble.....	KEVIN MUNHALL*
Sohovik/Ensemble.....	J SAVAGE*
Rocky/Ensemble.....	JUSTIN SHOWELL*
Doris/Ensemble.....	SARAH ANNE SILLERS*
Ensemble.....	JORDYN TAYLOR*
Gloria Thorpe.....	ALYSHA UMPHRESS*
Lola.....	ANA VILLAFÁÑE*

## UNDERSTUDIES

For Meg Boyd — RAYANNE GONZALES\*  
For Lola — DANIELLE MARIE GONZALEZ\*  
For Applegate — NEHAL JOSHI\*  
For Joe Boyd/Van Buren — KEENAN McCARTER\*  
For Fuzzy/Welch — KEVIN MUNHALL\*  
For Joe Hardy — JUSTIN SHOWELL\*  
For Gloria Thorpe — SARAH ANNE SILLERS\*  
For Sister — JORDYN TAYLOR\*

## SWINGS

DRAKE LEACH\*  
DANI SPIELER\*  
RYAN VYSKOCIL

## DANCE CAPTAIN

RAÚL CONTRERAS\*



# FOR THIS PRODUCTION

Associate Set Designer .....	MIKE KAUKL
Associate Costume Designer.....	ABBY HAHN
Associate Lighting Designer .....	JOEL SHIER
Associate Sound Designer.....	CAECILIA ARMSTRONG
Associate Projection Designer .....	ZOEY CROW
Associate Wig and Hair Designer.....	SEBASTIAN WEBER
Percussion Supervisor .....	SPENCER COHEN
Music Assistant.....	WHITNEY WALLACE
Music Copyist.....	JACOB FJELDHEIM
Electronic Music Programming.....	STRANGE CRANIUM: BILLY JAY STEIN, SHARON AHN, HIRO IIDA, CHASE KESSLER, JACOB ROSE, SCOTT WASSERMAN
Production Assistant.....	KYLA S. MERMEJO-VARGA
Script Production Assistant.....	MALLORY CARBON
Lighting Programmer .....	BEN WOLFE
Lighting Assistant .....	LIV JIN
Projections Engineer .....	CASSANDRA SAULSKI
Associate Projections Engineer.....	LEVI MANNERS
Projection Programmer .....	DEVIN KINCH
Sub Projection Programmer.....	MARK COSTELLO
Stage Supervisor.....	HANNAH MARTIN
Stage Carpenters.....	MAX MARSHALL, SHANNON NICHOLS
Props Technicians.....	HOWARD BOLDEN, KAYLA PROUGH
Light Board Operator .....	KELSEY SWANSON
Followspot Operators.....	JAY BROADNAX, ALYSSA FOY, JOZEF ORISICH, CONNOR SKALITZKY
A1 (9/9-9/19).....	CARIN FORD
A1 (9/20-11/9).....	ALEX CLOUD
A2 .....	ANN TRAN
Wardrobe Supervisor.....	ALICE HAWFIELD
Wardrobe Technicians.....	ARIEL HULVEY, CAITLIN O'BRIEN
Wigs, Hair, and Makeup Supervisor.....	JAIME BAGLEY
Wigs and Hair Technician .....	ROBIN MALINE
Crew Swing.....	DAVID PHILIP

# MUSICIANS

Music Director/Conductor/Keys I .....	ADAM ROTHENBERG
Associate Music Director/Keys II .....	DEAN BALAN
Flute/Piccolo Flute/Alto Sax/Clarinet (9/9-10/26) .....	KEITH DAUDELIN
Flute/Piccolo Flute/Alto Sax/Clarinet (10/28-11/9) .....	MATT BELZER
Clarinet/Soprano Sax/Tenor Sax/ Flute/Oboe/English Horn (9/9-10/30) .....	BEN BOKOR
Clarinet/Soprano Sax/Tenor Sax/Flute (11/1-11/9) .....	BILL MULLIGAN
Oboe/English Horn (11/1-11/9) .....	EMILY MADSEN
Bass Clarinet/Clarinet/Flute/ Baritone Sax/Alto Sax/Bassoon .....	KELSEY MIRE
Trumpet 1 .....	CRAIG TAYLOR
Trumpet 2 .....	BRENT MADSEN
Trombone 1 .....	JOE JACKSON
Trombone 2 .....	PETE FRANCIS
Violin/Viola .....	IMELDA TECSON JUAREZ
Acoustic/Electric Bass .....	ARNOLD GOTTLIEB
Drum Set (9/9-9/21) .....	SPENCER COHEN
Percussion (9/21-11/9) .....	JO HULING
AFM Musical Contractor/Percussion (9/9-9/21)/ Drum Set (9/23-11/9) .....	DANNY VILLANUEVA

WE WANT TO HEAR FROM YOU!

SCAN THE  
QR CODE  
TO SHARE  
YOUR THOUGHTS



TAKE OUR SURVEY!

Please take a few minutes to tell us  
about your experience at the theater.

Thank You For Joining Us!  
Thank You For Joining Us!  
Thank You For Joining Us!  
Thank You For Joining Us!

# SETTING

2000.

## MUSICAL NUMBERS

### ACT I

Six Months Out of Every Year.....	JOE BOYD, MEG, HUSBANDS, WIVES
Six Months Out of Every Year (Reprise).....	APPLEGATE
Goodbye, Old Girl.....	JOE BOYD, JOE HARDY
Heart.....	VAN BUREN, ROCKY, ITO, FUZZY, SOHOVIK
Heart (Reprise).....	SOHOVIK, ITO, FUZZY, ROCKY, VAN BUREN, BALLPLAYERS, GLORIA
Shoeless Joe from Hannibal, MO.....	GLORIA, BALLPLAYERS
Shoeless Joe (Reprise).....	APPLEGATE, FANS, PASTRY CHEF, FINANCIERS
A Man Doesn't Know (Preprise).....	JOE HARDY
A Little Brains, A Little Talent.....	LOLA
Heart (Reprise).....	JOE HARDY, WELCH, VAN BUREN, BALLPLAYERS
A Man Doesn't Know.....	JOE HARDY, MEG
A Man Doesn't Know (Reprise).....	MEG
Whatever Lola Wants.....	LOLA
Act One Finale.....	APPLEGATE, LOLA, SEVEN DEADLY SINS

### ACT II

Take Me Out to the Ball Game*.....	AUDIENCE, BALLPLAYERS, ORIOLES MASCOT
Who's Got The Pain?.....	LOLA, BALLPLAYERS
Whatever Lola Wants (Reprise).....	LOLA
Shoeless Joe (Reprise).....	GLORIA, REPORTERS
The Game.....	BALLPLAYERS
Near to You.....	JOE HARDY, MEG
Those Were the Good Old Days.....	APPLEGATE
Two Lost Souls.....	LOLA, JOE, THE LOST SOULS
The Star Spangled Banner*.....	JOE HARDY
A Man Doesn't Know (Finale).....	JOE BOYD, MEG
Heart (Bows).....	COMPANY

The videotaping or audio recording of this production is strictly prohibited.  
Please turn off all electronic devices unless using our GalaPro closed captioning service.  
Drinks with a lid are allowed in the theater. Eating is not permitted inside the theater.



## PRODUCING PARTNERS

Willette & Manny Klausner, Annaleise Loxton, Tamara & Peter Erickson, David B. Shapiro, Robert Ahrens, Kate Cannova, D'Angora Padgett Productions, Ken & Luc Fakler, The Michael & Christine Farah Family Foundation, Haffner-Wright Theatricals, Indie Slingshot, Whitney Kroenke Silverstein, Scott Landis, Riki Kane Larimer, Cody Lassen, Amanda Lee, Mickey Liddell & Pete Shilaimon, Nana Theatricals, Open Horizon, Picklestar Theatricals, J.J. Powell, James L. Simon, Rick Steiner Productions, DeRoy Adler Davis, Goulet Fitzsimmons Productions

---

## SPECIAL THANKS

*Damn Yankees* Estate, Major League Baseball & Nick Trotta, New York Yankees, Baltimore Orioles, Mark Shacket, Jordan Brand & Reggie Saunders, Creative Goods, Crossroads Live North America, Tom Distler, Alex Donnelly, Emily Joy Fobes, Mike Fox, Jere Harris, Juniper Street Productions, Cathy Kwon & Foresight Theatrical, Jill Martin, Tony Mercado, Jr. & EEP Sports, Rick Miramontez, Katie O'Rourke, Mark Bailey, & Washington Nationals, Production Resource Group North America, Sound Associates, Suzyn Waldman, Eric Winterling, Inc.



Jordan Donica for *Damn Yankees* at Nationals Park. Photo by Tony Powell.

# A GRAND SLAM FOR THE SENSES

BOLD BEIJING FLAVORS. LEGENDARY TABLESIDE SERVICE.

## Philippe by Philippe Chow



Experience the award-winning flavors of Beijing-style cuisine at Philippe Chow — where every bite is a home run. From our signature satays to the iconic Peking Duck, carved tableside and served with delicate house-made pancakes, our dishes are crafted to perfection.

*Philippe*  
by Philippe Chow



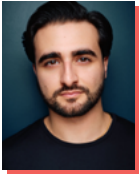
Official Restaurant Partner of Arena Stage



Reservations

635 Wharf St SW, Washington, DC 20024 | 202.601.8888 | [PhilippeChow.com](http://PhilippeChow.com)

# CAST



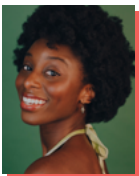
## GIUSEPPE BAUSILIO

(*Fuzzy/Ensemble*) is an actor, singer, dancer, choreographer, cinematographer, and producer born and raised in Switzerland. His brother is a former ballet dancer with the Paris Opera Ballet and his sister is a carpenter! Giuseppe began dancing at the age of three under the tutelage of his parents and made his Broadway debut as Billy in *Billy Elliot: The Musical* at just 11 years old. Broadway: *Newsies*; *Aladdin*; *Cats*; *Hello, Dolly!*; *Hamilton*; *Sunset Boulevard*. Film/TV: *Alfie* in *The Next Step*, *Ode to Passion*, *Dead Man Down*. He's excited to be making his Arena Stage debut! Proud Brazilian-Italian-Swiss! Speaks seven languages. Instagram: @giuseppebausilio



## RAÚL CONTRERAS

(*Peña/Ensemble, Dance Captain*), originally from Monterrey, Mexico, was just seen in the ensemble of *Sunset Boulevard* on Broadway starring Nicole Scherzinger. He previously served as dance captain, swing, and understudy for Santiago in *Moulin Rouge! The Musical* on Broadway. You can catch him as a featured dancer in the upcoming feature film *Kiss of the Spider Woman* starring Jennifer Lopez. He danced for Ballet Metropolitano de Monterrey, Metamorphosis Dance Collective, and Ballet Hispánico. He has served as a teacher, choreographer, and artistic director for Universidad de Monterrey's Dance Group, and as a guest teacher for Cirque du Soleil, Steps on Broadway, and Broadway Dance Center. He is a graduate of the Escuela Superior de Música y Danza de Monterrey with a BFA in Contemporary Dance, and has trained with Comunidad de Danza Urbana, Martha Graham School, and Universidad de Monterrey.



## DEANNA CUDJOE

(*Ensemble*) is thrilled to be making her Arena Stage debut in *Damn Yankees!* Broadway: *SMASH* (OBC, Ensemble, u/s Anita). Int'l Tour: *West Side Story* (Consuelo, u/s Anita). Regional: *My Best Friend's Wedding* (Ensemble, u/s Kimmy) and Disney's *Frozen* (Swing) and Ogunquit Playhouse. BFA in Dance, UNCSA. Voice: Marianne Wells. Endless love and gratitude to God, her family, and her amazing team at Lakey Wolff & Co. and Pilot Management! Always, Luke 1:37 Instagram: @deannacudjoe



## QUENTIN EARL DARRINGTON

(*Joe Boyd*), known as "Q," was most recently seen leading the Broadway-bound musical *3 Summers of Lincoln* at La Jolla Playhouse. A commanding presence on Broadway, he has starred in *MJ the Musical* (Grammy and Outer Critics Circle nominations), *Once On This Island* (Outer Critics Circle nomination), *Cats*, *Ragtime*, and *A New Brain* at City Center. Q is also a veteran of the national tours of *Memphis*, *The Color Purple*, *The Lion King*, and *Ragtime*, and has led acclaimed regional productions at the Kennedy Center, Paper Mill Playhouse, The Muny, and others. On television, Q has guest-starred/recurred on CBS' *Blue Bloods*, *NCIS: New Orleans*, *Madam Secretary*, *The Good Fight*, *The Code*, and NBC's *The Blacklist*. He lives and works by the truth of Philippians 3:12-14



## JORDAN DONICA

(*Joe Hardy*) is a Tony-nominated American actor, singer, writer, and director celebrated for his dynamic artistry across Broadway and television. He earned a BFA in Musical Theatre from Otterbein University. Donica made his Broadway debut as Raoul in *The Phantom of the Opera* and subsequently starred as Freddy Eynsford-Hill in *My Fair Lady* and Sir Lancelot in *Camelot*, earning him a 2023 Tony Award nomination for the latter. His acclaimed theater work includes the dual role of Marquis de Lafayette and Thomas Jefferson in the first national tour of *Hamilton*. He recently starred as Max von Mayerling in the Tony-winning revival of *Sunset Boulevard* on Broadway and is currently captivating audiences as Dr. William Kirkland in HBO's *The Gilded Age* Season 3. His television credits include Jordan Chase in the CW's *Charmed*. "Every Day is a Gift."



## JOHN MICHAEL FIUMARA

(*Gonzalez/Ensemble*) is excited to throw a few pitches in our nation's capital. Film: *Kiss of the Spider Woman*, Steven Spielberg's *West Side Story* as Big Deal. Broadway: *Hamilton*, *Funny Girl*, *Newsies*, *Chicago*. Thank you to God, family, friends, teachers, and mentors.



SHAKESPEARE  
THEATRE  
COMPANY

**GUYS**

**AND**

**DOLLS**

The title 'GUYS AND DOLLS' is presented on two white cards with green borders. The word 'GUYS' is on the top card, and 'DOLLS' is on the bottom card. The word 'AND' is on a small white tag with a hole and a string, positioned between the two cards. To the left of the cards are two gold cufflinks, each with four small diamonds. Below the cards is a gold ring with a large, round, brilliant-cut diamond. The background is a solid red color with a repeating pattern of small, stylized human figures in various poses.

BASED ON A STORY AND CHARACTERS OF **DAMON RUNYON**  
MUSIC AND LYRICS BY **FRANK LOESSER**  
BOOK BY **JO SWERLING** AND **ABE BURROWS**  
CHOREOGRAPHED BY **JOSHUA BERGASSE**  
DIRECTED BY **FRANCESCA ZAMBELLO**

**DEC 2, 2025–JAN 4, 2026 | HARMAN HALL**

**ORDER TODAY** [ShakespeareTheatre.org](https://ShakespeareTheatre.org) | 202.547.1122

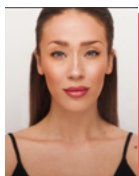


# CAST



## RAYANNE GONZALES

(*Sister/Ensemble*, u/s *Meg Boyd*) is elated to return to Arena Stage for an 8th time, reprising the role of Sister, which she played in the 2005 production. Rayanne's other Arena Stage credits include *Señor Discretion Himself*, *The Music Man*, *My Fair Lady*, *Mother Courage*, *Destiny of Desire*, *Oliver!*, and *Carousel*. She's also been seen in Signature Theatre's *In the Heights*; Ford's Theatre's *A Christmas Carol*; and Olney Theatre Center's *Matilda* and *In the Heights*, earning a Helen Hayes Award for Outstanding Leading Actress in a Musical. Rayanne's Broadway credits include *Phantom of the Opera* and *Hands on a Hardbody*. She appeared in the world-premiere productions of *Anastasia* at Hartford Stage and *Mystic Pizza* at Ogunquit Playhouse and La Mirada. Her film and TV credits comprise *In the Heights* and *The Sound of Music Live!*. Thank you, fam and Alex/CGF Talent! Instagram: [@rayannegonzales](#)



## DANIELLE MARIE GONZALEZ

(*Ensemble*, u/s *Lola*)'s credits include Off-Broadway: *Rock of Ages* (New World Stages), *Clueless: The Musical* (The New Group). National Tours: *Beetlejuice* (Miss Argentina), *Saturday Night Fever* (Stephanie), *Flashdance*, *Rock of Ages*. Favorite performances: Anita in *West Side Story* (5th Avenue), Brooke in *Legally Blonde*, Radio City Music Hall, Beacon Theatre. On screen, Danielle has guest-starred as Simone Rocha on *Law & Order: SVU*, danced on *SNL*, and *Katy Keane*. She choreographed and starred as Ashley Benson's body double in Clark Duke's upcoming film *Stranglehold*. She wants to express her gratitude to Spencer and Merri Sugarman at TRC Company, Marc Tumminelli, and Sergio. Instagram: [@daniemariegonzalez](#)



## MICHAEL HARMON

(*Smokey/Ensemble*) is excited to be making his Arena Stage debut! Broadway: *MJ the Musical*. Tour: *Hairspray*. Regional: *Mamma Mia!*, *A Christmas Carol*. Michael would like to thank his mother, Celeste, for her support. With God, all things are possible. [@michaelharmon\\_](#)



## NEHAL JOSHI

(*Van Buren*, u/s *Applegate*) is elated to mark his 8th show here. He has appeared as Ali Hakim in *Oklahoma!*, Amir in *Disgraced*, *Catch Me If You Can* (Helen Hayes nomination), *Mother Courage* with Kathleen Turner, *Unknown Soldier*, *The Music Man*, and *Señor Discretion Himself*. DC credits include *Babbitt* at Shakespeare Theatre, *Woolly Mammoth*, Olney Theatre Center, Kennedy Center, and Theater J. Broadway: *The Cottage*, *All My Sons*, *The Phantom of the Opera* (closing cast), *Flying Over Sunset*, *School of Rock*, *Gettin' the Band Back Together*, *Les Misérables* (1st revival), *The Threepenny Opera*. Off-Broadway: *Cyrano*, *Working* (2008 revision), *Grand Hotel* (Encores!). Video Games: *World of Warcraft: Cataclysm*. Television/Film: *The Wire*, *Search Party* (HBO), *Law & Order: SVU* (NBC), *Blackout*, *Under One Roof*. Honors: Special Drama Desk Award. He would like to dedicate this performance to the memory of Beth Newburger Schwartz. Instagram: [@nehaljoshi](#)



## RYO KAMIBAYASHI

(*Ito/Ensemble*) was born and raised in Tokyo, Japan. Broadway: *The Outsiders*, *Pirates! The Penzance Musical*. Readings: *Memoirs of Amorous Gentlemen*, *The Last Man*. Ryo recently graduated with a BFA in Musical Theatre and a minor in Music Composition from the University of Michigan. He would like to thank his friends and family!



## BRYONHA MARIE

(*Meg Boyd*) was last seen at Arena as Susan in *Dave*, which earned her first Helen Hayes nomination. Her second came with her depiction of Mrs. Lovett in *Sweeney Todd* at Signature Theatre. She has also appeared in the Kennedy Center production of *Ragtime* and the touring production of *Falsettos*. Her Broadway/off-Broadway credits include the recent revival of *Our Town*, *Prince of Broadway*, *Book of Mormon*, *After Midnight*, *The Gershwins' Porgy and Bess*, and *Ragtime*. Other NY credits include Lincoln Center Live's *Show Boat* and *Sweeney Todd* (Emmy Award), and NYCC's *Promenade*. Favorite recent regional credits include *Noises Off* (Old Globe); *Life After* (Goodman, Jeff Award nomination); and *Sister Act* and *Sound of Music* (Muny). On television, she can be seen in *How to Die Alone*, *Long Bright River*, *Madam*

# CURTAIN UP!



on this month's  
shows and  
interviews  
with your  
favorite DC  
theater-makers

Enjoy the performance from the comfort of any seat.

FOR ASSISTANCE, PLEASE SEE AN USHER OR FRONT OF HOUSE STAFF MEMBER.

**CLOSED CAPTIONING  
AT YOUR  
FINGERTIPS**

AVAILABLE STARTING SEPT 20



Arena Stage can also provide devices for use during the performance at Visitors Services. Availability subject to change.

FOR MORE INFORMATION, VISIT [ARENASTAGE.ORG/ACCESSIBILITY](https://arenastage.org/accessibility),  
EMAIL [ACCESS@ARENASTAGE.ORG](mailto:ACCESS@ARENASTAGE.ORG), OR CALL 202-488-3300.

Arena Stage's Arts Accessibility initiatives are sponsored by  exelon.

# CAST

Secretary, *The SpongeBob Musical: Live on Stage!*, and the 66th and 68th Tony Awards. Visit [bryonhamarie.com](http://bryonhamarie.com) for more info or follow [@bryonhamarie](https://www.instagram.com/bryonhamarie) on Instagram.



## KEENAN MCCARTER

(Welch, u/s Joe Boyd/Van Buren)

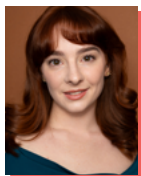
has appeared at Ford's Theatre in *Shout Sister Shout!* and *1776*, and at Signature Theatre in *The Color Purple*, *Ragtime*, and *Hair*. He toured nationally and internationally for over a decade as a musical ambassador with The U.S. Army Field Band and The U.S. Army Chorus. Keenan has performed with the New York Pops, Cleveland Symphony, Southern Illinois Symphony, and Lyric Opera of Chicago's Opera in the Neighborhoods, and is a proud graduate of Alabama State and Southern Illinois University; he's also been recognized by NATS, Opera Idol of Chicago, and The Schuyler Foundation. Keenan is passionate about storytelling through music, both onstage and in service.



## ROB MCCLURE

(Applegate)'s most recent

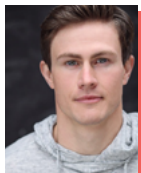
appearance in DC was in *Spamalot* at the Kennedy Center. His Broadway credits include *Mrs. Doubtfire* (Tony, Drama Desk, Drama League, and Outer Critics Circle nominations), *Chaplin* (Tony, Drama League, Astaire, and Outer Critics Circle nominations; Theatre World and Clive Barnes awards), *Beetlejuice*, *Something Rotten!*, *Noises Off*, *Honeymoon in Vegas*, *I'm Not Rappaport*, and *Avenue Q*, as well as *Where's Charley?* and *Irma La Douce* at Encores!. He starred Off-Broadway in the currently running production of *Little Shop of Horrors*. Regionally, he's performed at The Muny, Paper Mill, The Old Globe, Arden, Cleveland Play House, A.R.T., Walnut Street, Delaware Theatre Company, Flat Rock, McCarter, Ogunquit, and La Jolla Playhouse. His acclaimed solo concert, *Smile*, has been performed on stages all over the world. Film: *Recursion* (Best Actor at the Queens World and Williamsburg film festivals.) TV: *Elsbeth*, PBS Great Performances' *Celebrating 50 Years of Broadway's Best*, *The Marvelous Mrs. Maisel*, *Julia*, *Blue Bloods*, *Servant*, *Evil*, *Person of Interest*, *Elementary*, and *The Good Fight*.



## GEORGIA MONROE

(Ensemble) Arena debut!

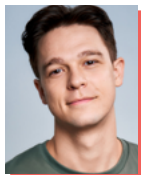
Broadway: *Sunset Blvd.* National Tour: *Escape to Margaritaville*. Regional: *Cabaret* (Goodspeed); *Beauty and the Beast*, *The Little Mermaid* (The Muny); *Rock of Ages* (Pittsburgh CLO). Pace University: BFA Commercial Dance. Much love to my family, Ryan Sanders (Suite Talent), and Hank! Instagram: [@georgiaemmonroe](https://www.instagram.com/georgiaemmonroe)



## KEVIN MUNHALL

(Commissioner/Ensemble, u/s

Fuzzy/Welch) is thrilled to be back onstage after a five-year hiatus running Habit Disruption, a company focused on helping executives, professionals, athletes, and performers with stress, anxiety, burnout, and performance. In this capacity, he has worked with Amazon, WeWork, Avocado Mattress, Fleet Feet, TouchCare Health, Igneo Infrastructure Partners, Two Circles, Sikich, Canyon Ranch, Brazen Athletics, University of Michigan, Vassar College, Howard University, University of the Arts, American University, and more. As a performer, his credits include Broadway: *Tootsie*, *Anastasia*, *Allegiance*, *Anything Goes*; National Tour: *Dirty Dancing*; NYC: Encores!, Lincoln Center, Carnegie Hall; Regional: Boston Pops, Golden Gate Theatre, Paper Mill Playhouse, Walnut Street, Ogunquit Playhouse, MTWichita, and more. TV: *Smash*, *One Life to Live*. Find him at [www.habitdisruption.com](http://www.habitdisruption.com) or on Instagram [@kevin\\_munhall](https://www.instagram.com/kevin_munhall).

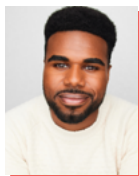


## J SAVAGE

(Sohovik/Ensemble) is a New

York-based actor from South Florida. In DC, he was seen at the Kennedy Center in *Footloose*. Broadway credits include *SMASH* (OBC), *Elf* (ORC), and *Bad Cinderella* (OBC). Off-Broadway, he could be seen in *Empire: The Musical*, *A Sign of the Times*, and the revival of *Seesaw*. He is also an avid outdoorsman and a vintage Barbie collector. A former van lifer, he spent the pandemic in Yellowstone National Park teaching preschool to the rangers' children where he wrote his first one-man show, *Farewell to the West*. He then returned as the 2022 Artist-in-Residence where he wrote his second one-man show, *After the Adventure*, both featuring his original music. Major thanks to Arena, the whole Damn Yankees team, PSU, DGRW, his family, and his home Jared and Sky. [@jasavage5](https://www.instagram.com/jasavage5)

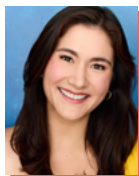
# CAST



## JUSTIN SHOWELL

(*Rocky/Ensemble*, u/s *Joe Hardy*)

is a proud DMV native! He is profoundly grateful to return to Arena Stage—where he once sat in the audience as a young dreamer—now as a player onstage! In his youth, he played Scipio in the 2006 and 2010 productions of *Porgy and Bess* at the Kennedy Center. He recently made his Broadway debut in *Floyd Collins* at Lincoln Center Theater. Other credits include *Hamilton: An American Musical* (North American Tour), *Buena Vista Social Club* (Atlantic Theater Company), *A Sign of the Times* (New World Stages), and *Frozen* (Maltz Jupiter Theatre). Endless gratitude to his parents, mentors, friends/family, and agents – DGRW! Praise to the Divine Maker from Whom all blessings flow. University of Michigan BFA Musical Theatre '19. Instagram: @justinbshow



## SARAH ANNE SILLERS

(*Doris/Ensemble*, u/s *Gloria Thorpe*)

is over the moon to be making her Arena debut! Select DC area credits include Olney Theatre Center's *Frozen*, *Kinky Boots*, *The Music Man* (Helen Hayes Award for Outstanding Ensemble in a Musical), *Singin' in the Rain*, *Elf the Musical*; Signature Theatre's *Sweeney Todd*, *She Loves Me*, *RENT*; Kennedy Center Theater for Young Audiences' *Through the Sunken Lands*, *The Dragon King's Daughter*, *The Day You Begin*; NextStop Theatre Company's *The 39 Steps*, *Ordinary Days*, *45 Plays for 45 Presidents*, *A Grand Night for Singing*; Monumental Theatre Company's *Songs for a New World*, *Urinetown*; and Avant Bard Theatre's *Visible Language* (Helen Hayes nomination for Outstanding Supporting Actress in a Musical). Education: Princeton University. [www.sarahannesillers.com](http://www.sarahannesillers.com) Instagram/TikTok: @sarah.anne.sillers



## JORDYN TAYLOR

(*Ensemble*, u/s *Sister*)

is thrilled to return to Arena Stage! Her credits include Arena's *Unknown Soldier* (Swing); Olney Theatre Center's *Senior Class* (Ty'Quasia, u/s Marva); Spooky Action Theater's *Professor Woland's Black Magic Rock Show* (Margarita); Theater Alliance's *Covenant* (Avery); Adventure Theater MTC's *She Persisted* (Harriet Tubman/Flo Jo) [Helen Hayes nomination for Outstanding Supporting Performer], *Junie B. Jones* (Lucille, Bobbi Jean, José); Monumental Theatre's *American Psycho*

(Evelyn Williams) [Helen Hayes Award for Outstanding Ensemble]; Signature Theatre's *Ragtime* (Sarah's Friend). TV/Film: PBS's *How Great Thou Art: A Sacred Celebration*; Direction/Music Direction: NextStop Theatre's Summer Theatre Adventures' *The Marvelous Wonderettes*; Howard University's *Heathers the Musical*. Howard University: BFA Musical Theatre (2023). Instagram: @favvvgeminiii TikTok: @jordyntaylorrr



## ALYSHA UMPHRESS

(*Gloria Thorpe*)

returns to Arena Stage after making her debut here in *The Bedwetter* earlier this year! Previously seen in the DC area originating the role of Cee Cee Bloom in the world premiere of *Beaches* at Signature Theatre (Helen Hayes nomination for Outstanding Lead Actress). Broadway credits include *On the Town*, *Bring It On*, *Priscilla Queen of the Desert*, *On a Clear Day You Can See Forever*, and *American Idiot*. She was nominated for a Lucille Lortel Award for her work in the NYC revival of *Smokey Joe's Café*. Her television credits include Murphy on two seasons of Netflix's *Bonding*, *Royal Pains*, *GirlsSeva*, *Chicago Med*, *Blue Bloods*, *Law & Order: SVU*, *Fosse/Verdon*, and *Nurse Jackie*. She performs with symphonies throughout the US and Europe and made her principal soloist debut at the world-famous La Scala opera house in Milan, Italy, in 2023. Instagram: @alyshaumphress



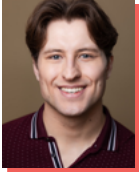
## ANA VILLAFÑE

(*Lola*)

was last onstage in the world premiere of *N/A* at Lincoln Center opposite Holland Taylor and directed by Diane Paulus. She is also attached to embody Hollywood icon Ava Gardner in *Sinatra: The Musical* directed by Kathleen Marshall. Her Broadway debut was originating the role of Gloria Estefan in the global hit musical *On Your Feet!* (Theatre World Award, Drama League Award, Outer Critics Circle nomination) directed by Jerry Mitchell. Ana starred as Nina in the Kennedy Center's 2018 production of *In the Heights* and earned her second Drama League Award in 2019 for MCC's critically acclaimed *Collective Rage: A Play in Five Betties* by Jen Silverman. She re-opened *Chicago* on Broadway in 2021 as the 25th Anniversary Roxie Hart. On screen, Ana is known for her work on *New Amsterdam* (NBC/Netflix), *Younger* (Paramount+/Netflix), and *Sunnyside* (NBC). She plays the title role in the upcoming feature film *Castro's Daughter* opposite James Franco. Named one of The New York Times' "30 Under 30" and honored by the NHMC for trailblazing Latin representation in entertainment. @anavillafaneofficial

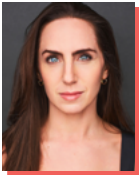


# CREATIVE



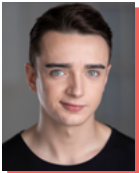
## DRAKE LEACH

(Swing)'s credits include Signature Theatre's *Into the Woods*, *We Shall Someday*, *She Loves Me*; Ford's Theatre's *The Trip to Bountiful*; Delaware Theatre Company's *Stompin' at the Savoy*; Arts Center of Coastal Carolina's *Something Rotten!*; North Shore Music Theatre's *Jersey Boys*, *The Sound of Music*; Theatre By The Sea's *Jersey Boys*; Imagination Stage's *Snow Queen*. Drake is so excited to be making his Arena Stage debut! Thank you Mom and Dad and Jim – and go Patriots! GMU '22. Facebook: [/drake.leach](#) Instagram: [@drake\\_leach](#)



## DANI SPIELER

(Swing) Arena Stage debut! Dani has appeared on Broadway in *Chicago*, *A Bronx Tale*, *Cats*, and *Legally Blonde*. She has appeared in the National Tours of *Cabaret*, *West Side Story*, *Elf*, and *Flashdance*. Other NYC credits include the pre-Broadway workshops of *Nerds and First Date*, as well as *American Dance Machine for the 21st Century* and *Illuminati Lizards from Outer Space*. Regionally, Dani has performed at Paper Mill Playhouse, Marriott Theatre, Houston TUTS, and Goodspeed Opera House. TV/Film credits include *Doogie Kamealoha, M.D.*, *Magnum P.I.*, *Are You Joking?*, *That's What She Said*, and *The Battery's Down*. Proud graduate of the University of Michigan. Love & thanks to Cory, Mom & Dad, CESD, Sergio and the entire DY team! Proud new Mom of Ruby! [danispieler.com](#) Instagram: [@danispieler](#)



## RYAN VYSKOCIL

(Swing) is delighted to be making their Arena debut with *Damn Yankees!* Ryan has performed with contemporary dance company Gallim at its Joyce Theater residency in 2023, performed and collaborated with Jodie Gates at the Laguna Playhouse, and toured with Adrienne Canterna's *Rock the Ballet* in 2024 and 2025 in Germany. Ryan studied at the University of Southern California Gloria Kaufman School of Dance, focusing on versatility, and hybridity between concert and commercial dance. Instagram: [@ryan\\_vyskocil](#)

## RICHARD ADLER (Co-Composer/Lyricist)

co-composed the music and lyrics for numerous musicals, including *The Pajama Game* and *Damn Yankees*, both of which won Tony Awards for Best Musical and Best Score. His hit songs include "You've Gotta Have Heart," "Whatever Lola Wants," "Steam Heat," "Rags to Riches," "Another Time, Another Place," and "Everybody Loves a Lover." Adler's television musicals *Little Women*, *Gift of the Magi*, and *Olympus 7-0000* were critically acclaimed. Mr. Adler has composed numerous symphonic works, including four Pulitzer Prize nominees; ballets for dance companies in Chicago, Fort Worth (TX), and Miami; and commissions for the U.S. Department of the Interior ("Wilderness Suite") and the Statue of Liberty's centennial ("The Lady Remembers"). He received numerous other awards and honors, including two Donaldson Awards, two *Variety* Drama Critics Awards, the *London Evening Standard* Theatre Award, the University of North Carolina PlayMakers Lifetime Achievement Award (1999), as well as the coveted Honorary National Park Ranger Award (1984). Mr. Adler was admitted to the Songwriters Hall of Fame in 1984. He died in 2012 at age 90.

## JERRY ROSS (Co-Composer/Lyricist)

wrote the musical scores for two of the most popular and enduring musicals in Broadway theater, *The Pajama Game* and *Damn Yankees*. He met Richard Adler in 1950, and they decided to team their talents, writing songs and special material, mainly for TV and nightclub acts. They had published several songs together when they attracted the attention of writer/publisher Frank Loesser and became his protégés. Their songs from *The Pajama Game* included "Hernando's Hideaway" and "Hey There" (a hit for Rosemary Clooney), both of which also topped the hit parade of popular songs. Successful films were made of both Adler and Ross musicals, although Mr. Ross did not get to see them realized. He died from complications related to the lung disease bronchiectasis in 1955. He was 29. Mr. Ross was admitted posthumously to the Songwriters Hall of Fame in 1982.

## GEORGE ABBOTT (Co-Author)

, an actor, writer, director, and producer, had one of the most active and distinguished careers in the history of the American theater. He began as an actor on Broadway in *The Misleading Lady* (1913) and continued working as a director and play doctor into the 1980s. He directed his first musical, Rodgers and Hart's *Jumbo*, in 1935; in addition to *A Funny Thing Happened on the Way to the Forum*, a short list of landmark musicals he directed includes *Pal Joey* (1940), *On the Town* (1944), *Where's Charley?* (1948), *The Pajama Game* (1954), *Damn Yankees* (1955), *Once Upon a Mattress* (1959), and *On Your Toes* (1936 and 1983 revival). Mr. Abbott received numerous awards, including the Pulitzer, the New York Drama Critics' Circle, four Donaldsons, six Tonys, and was a Kennedy Center honoree in 1983. He died in 1995 at the age of 107.



## Perfect Pre-Show Dinner!

*DELICIOUS AND GREAT VALUE LOCATED JUST STEPS AWAY FROM ARENA STAGE*

# DINNER & SHOW

## \$39 THREE-COURSE DINNER

Start your evening with a delicious three-course prix fixe menu, then walk over to see the show.

Save 50% on Bottles of House Wine to pair with your dinner!

- Show your Arena Stage ticket and enjoy 10% off our a la carte menu if you don't opt for the 3-course dinner.

- Offer not valid with Prix Fixe Menu, Wine Special, or any other offers or promotions.



## Dinner Coupon

## \$39 THREE-COURSE DINNER

Reserve Your Table Now!

1101 4th St, SW Washinton, DC 20024

Phone: (202) 488-0987 | [www.station4dc.com](http://www.station4dc.com)

Coupon is redeemable for one guest per table and can only be used once. Valid for Arena Stage ticket holders only.  
Not valid for add-on or any other promotions or discounts. Offer expires 06/30/2023.

Cut Here ✂

# CREATIVE

**(JOHN) DOUGLASS WALLOP** (Co-Author) was born in 1920. A journalist, novelist, and Washington Senators fan, he wrote *The Year the Yankees Lost the Pennant* in 1954. Written decades before *Field of Dreams* and other baseball fables, it remains one of the greatest fictional baseball books of all time. The novel was adapted for the stage, and later for film, as the musical *Damn Yankees*, which won Wallop a Tony Award for his work with George Abbott. Wallop was married to Lucille Fletcher, a film and television writer, until his death in 1985.

**WILL POWER** (Co-Adaptor) New York: *Memnon*, *Seize the King* (both Classical Theatre of Harlem); *Flow*, *The Seven*, *Fetch Clay*, *Make Man* (all NYTW); *The Gathering* (P.S. 122); *Steel Hammer* (co-writer, BAM); *Blessing the Boats: The Remix* (performer, Under the Radar Festival/The Public Theater). Regional: *Seize the King* (La Jolla Playhouse), *Memnon* (Getty Villa), *Stagger Lee* (Dallas Theater Center), *Honey Bo and the Goldmine* (La Jolla Playhouse), *The Seven* (La Jolla Playhouse, Ten Thousand Things Theater), *Five Fingers of Funk* (Children's Theater Company), *Detroit Red* (ArtsEmerson). Awards: Keely Lake Advocacy Award (American Classical League), *New York Times* Critic's Pick (*Seize the King*), Doris Duke Artist Award, Andrew W. Mellon Foundation Playwright in Residence, Lucille Lortel Award, others. Associate Professor, Occidental College (Los Angeles). Love to Marla, Omar-Sol, Sophia.

**DOUG WRIGHT** (Co-Adaptor)'s most recent Broadway credit was *Good Night*, Oscar starring Sean Hayes, who won the Tony Award for his performance. It opened in the summer of 2025 at the Barbican in London, where it played to sold-out houses. Other Broadway outings include *I Am My Own Wife* (Tony Award, Pulitzer Prize, Drama Desk Award, Outer Critics Circle Award, and others), *War Paint*, *Hands on a Hardbody* (Drama Desk nomination), *The Little Mermaid*, and *Grey Gardens* (Tony Award nomination). Off-Broadway credits include *Posterity* (Atlantic Theater Company), *Unwrap Your Candy* (Vineyard Theatre), *Quills* (New York Theatre Workshop), *Standing on Ceremony* (Minetta Lane Theatre), and *Buzzsaw Berkeley* (WPA Theater). His plays and musicals have been seen in over thirty-three countries around the globe. Films include *Quills* (WGA's Paul Selvin Award, Golden Globe nomination) and *The Burial* starring Jamie Foxx and Tommy Lee Jones (NAACP Image Award nomination). He is the former president of the Dramatists Guild of America and a member of SAG-AFTRA, SDC, and the WGA. He has been a frequent fellow at Yaddo, MacDowell, and Ucross. Doug serves on the boards of the New York Theatre Workshop and the Hermitage Foundation, and has taught at NYU, Princeton, and Yale. He has mentored young screenwriters at Sundance

for twenty years. He lives in Manhattan with his husband, singer-songwriter David Clement, and their cats, Glynis and Murray. He would like to dedicate his work on *Damn Yankees* to his late father, who had a massive crush on Gwen Verdon and saw the original production (from standing room) twenty-seven times.

**LYNN AHRENS** (Additional Lyrics) For Broadway's *Ragtime*, Lynn Ahrens won the Tony Award, Drama Desk Award, and Outer Critics Circle Award for Best Score and received two Grammy nominations. (This year's *Ragtime* at Lincoln Center Theater marks the show's third time on Broadway.) She received two Academy Award and two Golden Globe nominations for the animated feature film *Anastasia*, which she also adapted for Broadway. Broadway and off-Broadway: *Once On This Island* (Olivier Award for Best Musical, Tony Award for Best Musical Revival, Grammy nomination), *Seussical* (Grammy nomination), *My Favorite Year*, Madison Square Garden's *A Christmas Carol*, *Rocky*, *Chita Rivera: The Dancer's Life*, *A Man of No Importance*, *Dessa Rose*, *The Glorious Ones*, *Lucky Stiff*, *Knoxville*, *Little Dancer*. In 2015, she and collaborator Stephen Flaherty were inducted into the Theater Hall of Fame. Dramatists Guild of America; co-founder, DGF Fellows Program. Cheers to the *Damn Yankees* team and to Adler and Ross.

**SERGIO TRUJILLO** (Director/Choreographer) is an internationally renowned director and choreographer whose work has spanned Broadway, film, television, and international stages. He has choreographed 14 Broadway musicals, including *Ain't Too Proud – The Life and Times of The Temptations* (Tony Award, OCC nomination), *Jersey Boys* (Olivier nomination, Drama Desk nomination, OCC nomination), *Memphis* (Olivier Award, Outer Critics Circle Award, NAACP Award), *On Your Feet!* (Chita Rivera Award, Tony nomination, OCC nomination), *The Addams Family*, and *Next to Normal* (2010 Pulitzer Prize). In 2011, four of his productions ran simultaneously on Broadway. Most recently, he directed the Tony-nominated Broadway production of *Real Women Have Curves*, as well as *Jesus Christ Superstar* starring Cynthia Erivo and Adam Pascal at the Hollywood Bowl. Other directing credits include *Arrabal* at American Repertory Theater (Elliot Norton Award for Best Direction), Cirque du Soleil's *Paramour* for Stage Entertainment, and co-direction of *The Harder They Come* at The Public Theater. He made history as the first Latinx recipient of the Tony Award for Best Choreography for *Ain't Too Proud* in 2019. Additional accolades include the 2015 Olivier Award for Best Theatre Choreographer (*Memphis*), two Emmy Award nominations (including *Annie Live!* for NBC), and three NAACP Awards. Upcoming projects include the film adaptation of *Kiss of the Spider Woman*, starring Jennifer Lopez.

# CREATIVE

## **GREG ANTHONY RASSEN** (*Music Supervisor and Arranger*)

A Drama Desk winner and Tony nominee for *Bandstand*, Greg's other Broadway credits include *An American in Paris*, *Bullets Over Broadway*, *Little Mermaid*, *Book of Mormon*, *R&H's Cinderella*, and *A Chorus Line* (Revival). He composed Tulsa Ballet's *Remember Our Song* for Andy Blankenbuehler. His show orchestration credits include *Between the Lines* (Second Stage), *Jerry Springer: The Opera* (New Group), and *Beast in the Jungle* (Vineyard). He has arranged numerous charts for the New York Pops, Boston Pops, and National Symphony for stars, including Renée Elise Goldsberry, Leslie Odom, Jr., Shoshana Bean, and Adrienne Warren. He orchestrated several of André Previn's final large orchestral works, and he has an MM degree from Cincinnati Conservatory of Music. He sends his love to his husband, Jeremy, and his children, Gabriel and Sylvia.

**ROBERT BRILL** (*Set Designer*) is a four-time Tony Award nominee, whose Broadway credits include *Hell's Kitchen*, *How to Dance in Ohio*, *Dancin'*, *Ain't Too Proud*, *Thoughts of a Colored Man*, *Summer: The Donna Summer Musical*, *Assassins*, *Jesus Christ Superstar*, *Guys and Dolls*, *Design for Living*, and *Buried Child*, as well as the set and club design for the 1998 and 2014 revivals of *Cabaret*. His work has been seen internationally and across the U.S., including the Metropolitan Opera, English National Opera, BAM, Radio City Music Hall, La Jolla Playhouse, and many others. A founding member of Sledgehammer Theatre, he is a recipient of the Michael Merritt Award for Excellence in Design and Collaboration and professor of Scenic Design at University of California San Diego. [robertbrilldesign.com](http://robertbrilldesign.com) @brill\_robert

**LINDA CHO** (*Costume Designer*) Broadway: *Art*; *Ragtime*; *The Great Gatsby* (Tony Award); *A Gentleman's Guide to Love and Murder* (Tony Award); *Anastasia* (Tony nomination); *Pirates! The Penzance Musical*; *Doubt*; *POTUS*; *Grand Horizons*; *Harmony*; *Summer, 1976*; *Take Me Out*; *Lifespan of a Fact*. Opera: *Samson and Delilah* at the Metropolitan Opera, *Der Zwerg* at Los Angeles Opera, *Turandot* at Washington National Opera. UK productions include *The Great Gatsby* at the Coliseum, *Bhangra Nation* at Birmingham Rep, and *Come Fall in Love* at Manchester Opera House. Recipient of the Irene Sharaff Young Master Award, Advisory Committee of the American Theatre Wing, and Susan Smith Blackburn Prize judge. MFA Yale School of Drama. [lindacho.com](http://lindacho.com)

## **PHILIP S. ROSENBERG** (*Lighting Designer*)

Broadway and West End: *BOOP!*, *Mrs. Doubtfire*, *Pretty Woman*, *The Elephant Man*, *A Gentleman's Guide to Love and Murder*, *It's Only a Play*. Regional: Kennedy Center, La Jolla Playhouse, Ford's Theatre, Guthrie Theater, The Old Globe, Asolo, TheatreWorks, Hartford Stage, Alliance, Huntington Theatre Company, Chicago Shakespeare Theater, Shakespeare Theatre Company, Dallas Theater Center, Denver Center Theatre, Alley Theatre, Arena Stage, McCarter Theatre, Manhattan School of Music, Portland Stage Company, TACT, Barrington Stage Company, Williamstown Theatre Festival, Dorset Theatre Festival, Bay Street Theater, Goodspeed Opera, Two River Theater, George Street Playhouse, Westport Country Playhouse.

## **WALTER TRARBACH** (*Sound Designer*)

Previously at Arena Stage: *Dave*. Broadway: *Water for Elephants* (Drama Desk Award), *SpongeBob SquarePants* (Tony nomination), *The Farnsworth Invention*, *Cymbeline*. Co-Sound Designs: *Ain't Too Proud* (Tony nomination), *The Radio City Christmas Spectacular*, *Doctor Zhivago*. Other Credits: *Take the Lead*, *The Harder They Come*, *The Elf on the Shelf*, *Queen of the Mist*, *The Unsinkable Molly Brown*, *Becky Shaw*. He is married to photographer Kimberly Witham.

## **PETER NIGRINI** (*Projection Designer*)

is one of Broadway's pioneering projection designers. His work includes *Hell's Kitchen*; *Here Lies Love*; *MJ*; *Ain't Too Proud*; *Beetlejuice*; *The SpongeBob Musical*; *Dear Evan Hansen*; *A Doll's House, Part 2*; and *Fela!*. In other venues, *Grounded* (Public Theater); *Hans Zimmer Live*; *Lucia di Lammermoor*, *Don Giovanni* (Santa Fe Opera); *The Grace Jones Hurricane Tour*; *Deep Blue Sea* (Bill T. Jones/Park Avenue Armory); and *Real Enemies* (BAM). He has been nominated for five Tony Awards and won a Lortel, a Drama Desk, a Jeff, and an Obie. This fall, he will bring a revival of *Chess* back to Broadway.

## **CHARLES G. LAPOINTE** (*Wig and Hair Designer*)

is an award-winning wig and hair designer based in New York, who maintains a highly successful career on stages throughout the United States and abroad. *Damn Yankees* is Chuck's eighth collaboration with Arena Stage. Broadway Highlights: *Hamilton* (Make-Up Artists & Hair Stylists Guild Award); *Death Becomes Her* (Drama Desk Award); *The Great Gatsby*; *Pirates! The Penzance Musical*; *Suffs* (Drama Desk nomination); *MJ the Musical*; *The Who's Tommy*; *The Wiz*; *Beautiful: The Carole King Musical*; *Beetlejuice*; *The Cher Show* (Drama Desk Award); *The Band's Visit*; *Anastasia*; *SpongeBob SquarePants* (Drama Desk Award); *Jersey Boys*; *A Gentleman's Guide...*; *In the Heights*. Television: *The Wiz Live!* (Emmy Award nomination); *Jesus Christ Superstar Live in Concert* (Emmy Award nomination and Make-Up Artists & Hair Stylists Guild Award).



**PAUL KIEVE** (*Illusion Designer*)'s Broadway and West End credits include *Ghost* (Drama Desk Award), *Groundhog Day* (Green Room Award), *Matilda*, *Pippin*, *Side Show*, *Finding Neverland*, *The Woman in White*, *Macbeth* (with Kenneth Branagh), *The Phantom of the Opera* (U.S. tour). Other West End: *The Tempest* (with Ralph Fiennes), *Fatal Attraction*, *Invisible Man*, *Zorro* (also Atlanta), *Lord of the Rings* (also Toronto), *Our House*, *The Witches*, *Scrooge*. Other: *Awakening* (Wynn Las Vegas), *Mickey and the Magician* (Disneyland Paris), Adele Las Vegas residency, Kate Bush Live. Consultant to David Blaine, Penn & Teller, and David Copperfield. Movies: *Harry Potter and the Prisoner of Azkaban* (in which he also appears), *Hugo* (directed by Martin Scorsese), *Wonka* (tutoring Timothée Chalamet), Disney's *Snow White*. Author: *Hocus Pocus* (introduction by Daniel Radcliffe), Scholastic. Honored with Creative Fellowship Award and Honorary Lifetime Membership of The Magic Castle, Hollywood. Member of The Inner Magic Circle, London, and executive curator of their museum. [stageillusion.com](http://stageillusion.com)

**DAVID CHASE** (*Score Supervisor*) was last at Arena Stage with *The Bedwetter* earlier this year. Stage credits include 40+ Broadway shows as music director/supervisor and/or arranger. TV: *Schmigadoon!*, *The Marvelous Mrs. Maisel* (in which he also appeared onscreen), *Crazy Ex-Girlfriend*, *The Gilded Age*, *The Sound of Music Live!*, *Peter Pan Live!* (Emmy nominations for both), and the upcoming *American Classic*. Film includes *The Last Showgirl* and the upcoming *The Bride!*. Also: many arrangements for the Kennedy Center Honors, the Boston Pops, and Radio City Music Hall. Choral music is published by Hal Leonard. Grammy and Olivier nominations. David lives in New York with his wife, Drama Desk nominee Paula Leggett Chase, and their sons, Kyler and Dashiell. David's first Broadway show was the 1994 revival of *Damn Yankees*. He dedicates his work here to the memory of James Raitt and Richard Adler. [davidchasemusic.com](http://davidchasemusic.com)

**DOUG BESTERMAN** (*Orchestrator*) is a three-time Tony Award-winning orchestrator, arranger, and composer. His Broadway credits include *Death Becomes Her*, *BOOP!*, *SMASH*, *It Shoulda Been You*, *A Bronx Tale*, *Bullets Over Broadway*, *Elf*, *Sister Act*, *Young Frankenstein*, *How to Succeed in Business Without Really Trying*, *Thoroughly Modern Millie*, *The Producers*, and *Fosse*. Off-Broadway and international work includes *Anastasia*, *Charlie and the Chocolate Factory*, *Rocky*, and *Tarzan*. Film credits include *Kiss of the Spider Woman* (2025), *Mary Poppins Returns*, *Frozen*, *Chicago*, *The Little Mermaid* (2023), *Beauty and the Beast* (2017), and *Aladdin* (2019). Television credits include *Schmigadoon!* (Apple TV+), *The Sound of Music Live!* (NBC), *Scrubs*, *Galavant*,

*Crazy Ex-Girlfriend*, and *Smash*. He has worked with Barbra Streisand, Mandy Patinkin, Sutton Foster, and Barry Manilow, and composed scores for *Breathe*, *Little Did I Know*, *The Big One-Oh!*, and *Crumbs*. [www.dougbesterman.com](http://www.dougbesterman.com)  
[www.arrivalartsinitiative.org](http://www.arrivalartsinitiative.org)

**ADAM ROTHENBERG** (*Music Director*) is a music director, conductor, and pianist based in New York City. He has conducted the Broadway revivals of *Sunset Boulevard*, *Sweeney Todd*, and *Company*, and music directed the off-Broadway productions of *See What I Wanna See* and *Watch Night*. He has made concert appearances with such luminaries as Patti LuPone, Josh Groban, Ruthie Ann Miles, Annaleigh Ashford, and Matt Doyle. He is the music director and co-arranger of *Giulia*, a new musical by Jennifer Nettles premiering at PAC NYC next year. An avid classical musician, he has performed at Carnegie Hall, the Kennedy Center, David Geffen Hall (with the NY Philharmonic), the Barbican Centre in London, and the Tanglewood Music Center. He holds degrees from The Juilliard School and Northwestern University. Instagram: [@adam\\_rothenberg](https://www.instagram.com/adam_rothenberg)

**MARC TUMMINELLI** (*Associate Director*) is the founder of Broadway Workshop, New York's top training program for young actors. Associate directing credits include *Jesus Christ Superstar* starring Cynthia Erivo at the Hollywood Bowl, directed by Sergio Trujillo. Selected Directing: *Waitress*, *Clue* (Engeman); *Beautiful*, *Jekyll & Hyde*, *Dreamgirls* (WPPAC); *Secret Garden*, *School of Rock* (VMT); *I Love My Wife* (ODTC); *Over the Tavern*, *The Marvelous Wonderettes* (Big Arts); *Ship Happens* (McCarter/Princeton). Film: *Better Nate Than Ever* starring Lisa Kudrow (Disney). Upcoming Directing: *Finding Neverland* (WPPAC). Thank you, Sergio! [marctumminelli.com](http://marctumminelli.com) Instagram: [@marctumminelli](https://www.instagram.com/marctumminelli)

**BRANDT MARTINEZ** (*Associate Choreographer*) has spent the last decade performing and being involved in the creation of the following Broadway productions: *Moulin Rouge!*, *The Musical*, *Aladdin*, *Fiddler on the Roof*, *Natasha, Pierre & The Great Comet of 1812*, *Hamilton*, *Dancin'*, *Illinois*, *Beetlejuice*, *Charlie and the Chocolate Factory*, *Margaritaville*, and *Some Like It Hot*. Brandt's TV appearances include *The Marvelous Mrs. Maisel*, *The Affair*, *The Last O.G.*, *The Today Show*, *Good Morning America*, *The Late Show with Stephen Colbert*, *The Tonight Show*, *The Tony Awards*, and *Annie Live!* on NBC. Although performing has been a passion of Brandt's, he is finding even more fulfillment being on the creative side as an associate choreographer for *Damn Yankees*. Thank you to the great Sergio Trujillo for this opportunity!



The  
Kennedy  
Center

THE TONY WINNING  
BEST MUSICAL IS BACK!

# MONTY PYTHON'S SPAMALOT™

DEC. 16–JAN. 4  
OPERA HOUSE



**Kennedy-Center.org**

The ONLY OFFICIAL WEBSITE of the Kennedy Center  
(202) 467-4600

Groups 20+ (15 for *Shear Madness*  
and 10 for *Washington National Opera*)  
call (202) 416-8400.

For all other ticket-related customer  
service inquiries, call the Advance Sales  
Box Office at (202) 416-8450.

THANKS TO OUR SPONSOR

 The DRUTZ FAMILY  
Fund for Musical Theater

# CREATIVE

**DEAN BALAN** (*Associate Music Director*) is an NYC-based conductor, pianist, and music director, originally from Las Vegas. He currently serves as the Associate Music Director for Disney's *The Lion King* on tour, which he conducted during its most recent engagement at the Kennedy Center Opera House. Favorite credits include *The Prom* (Music Director, 1st National Tour), *R&H's Cinderella* (Associate MD, 2nd National Tour), and four seasons as Music Director of Vegas City Opera. He completed studies at the University of Nevada-Las Vegas (BA Anthropology), the Cincinnati College-Conservatory of Music (MM Orchestral Conducting), and the Collaborative Piano Institute. Dean is a member of the American Federation of Musicians (AFM) and Musicians United for Social Equity (MUSE).

**THE TRC COMPANY** (*New York Casting*) Broadway: *Dead Outlaw, BOOP! The Musical, Old Friends, Buena Vista Social Club, Death Becomes Her, Left on Tenth, The Outsiders, SIX, Aladdin*. Tours: *The Phantom of the Opera, Beauty and the Beast, Water for Elephants, The Wiz, Back to the Future, Mamma Mia!, Les Misérables*. The TRC Company is proud to continue the casting legacy of Tara Rubin Casting and Johnson-Liff Casting.

**RAIYON HUNTER** (*DC Casting*) is a casting director, producer, and arts administrator from New Orleans, Louisiana. She currently works as the Casting Director/Line Producer of Arena Stage. Previously, she worked as the Casting Director of Children's Theatre Company and the Spelman Leadership Fellow at the Alliance Theatre where she has contributed to a multitude of shows in varying capacities ranging from casting associate to director on productions such as *Do You Love the Dark?*, *Darlin' Cory*, *Bina's Six Apples*, *Good Bad People*, *Confederates*, and more. Additionally, she has been in residency at Oregon Shakespeare Festival under Natakai Garrett and The Repertory Theatre of St. Louis under Hana S. Sharif.

**CHRISTI B. SPANN** (*Stage Manager*) has been working as a stage manager in DC since 2011. Recent productions include *Death on the Nile*, *The Age of Innocence*, and *We Are Gathered*. She previously spent 12 seasons on the stage management staff at the Denver Center Theatre Company, and has also worked with the Great River Shakespeare Festival in Winona, MN, and Virginia Repertory Theatre in Richmond, VA.

**STEFANIA GIRON ZULUAGA** (*Assistant Stage Manager*) returns to Arena Stage following last season's *The Age of Innocence*. Regional credits include *The Untitled Unauthorized Hunter S. Thompson Musical*, *A Funny Thing Happened on the Way to the Forum* (Signature Theatre); *Murder on the Orient Express*, *Destiny of Desire* (The Old Globe); *Something's Afoot*, *Songs of the Moon*, *Into the Woods* (The 5th Avenue); *Quixote Nuevo*,

*Fat Ham*, *The Tempest*, *I Am Not Your Perfect Mexican Daughter* (Seattle Rep); *Quixote Nuevo*, *Seussical* (South Coast Rep); *A Christmas Carol* (ACT); *Little Shop of Horrors*, *Mamma Mia!*, *The Book Club Play* (Village Theatre). Education: Seattle University.

**SARA GEHL** (*Assistant Stage Manager*) is excited to be back at Arena Stage! Previous Arena credits include *Jaja's African Hair Braiding* and *Cambodian Rock Band*. Some of her recent DC area credits include *Senior Class* (Olney Theatre Center), *Private Jones* (Signature Theatre), *The Matchbox Magic Flute* (Shakespeare Theatre Company), and *Your Name Means Dream* (Theater J).

**PINNACLE PRODUCTIONS** (*Producer*) is a partnership between two Tony Award-winning producers.

**HALEY SWINDAL** (*Producer*) is a Managing Partner of *Damn Yankees*. Past Broadway credits include *Sunset Blvd* (Tony Award), *Hell's Kitchen*, *Grey House*, *Swept Away*, and *The Shark is Broken*. West End credits include *Rose and Death Note: The Musical in Concert*, and her off-Broadway credits include *The Lion*, which won a Drama Desk Award for Outstanding Solo Performance. Proud Drama League Member and Tony voter. Separate from her theatrical endeavors, Haley is the Proud Ambassador for Community Affairs for the New York Yankees.

**JANA ROBBINS** (*Producer*) is a Broadway actor and producer and co-founder of Pinnacle Productions. Broadway producing credits include *Little Women*, *Ragtime*, *Company* (Tony Award), and *The Shark Is Broken*. Off-Broadway, she was lead producer of *Fiddler on the Roof in Yiddish* (Drama Desk Award). West End credits include *Company* (Olivier Award), *Rose*, *Death Note: The Musical in Concert*, and *This Bitter Earth*.

**JULIE BOARDMAN** (*Producer*) is an entrepreneur and three-time Tony winner. She is Co-Founder & Executive Producer of the award-winning Museum of Broadway, which opened in Times Square in 2022 and has been included on numerous "best of" lists, including *USA Today*, *National Geographic*, *Time Out*, and *Condé Nast Traveler*. Select Broadway: *An American in Paris*, *A Doll's House*, *Buena Vista Social Club*, *Cabaret at the Kit Kat Club*, *Carousel*, *Company*, *Funny Girl*, *Head Over Heels*, *Indecent*, *Romeo + Juliet*, *Sunset Blvd*, *The Inheritance*, *Waiting for Godot*. Tours: *AAIP*, *Dreamgirls*, *Funny Girl*, *Peter and the Starcatcher*. West End: *An American in Paris*, *The Son*. Upcoming: *Sinatra*, *The Thing About Jellyfish*. Julie is a member of The Broadway League and on the Theatre Committee at NYPL for the Performing Arts. Proud USC alum.



# ARENA LEADERSHIP

**HANA S. SHARIF** (*Artistic Director*) has enjoyed a multi-faceted theater career, including roles as an artistic leader, director, playwright, and producer with a specialty in strategic and cross-functional leadership. Hana began her professional career as an undergraduate student at Spelman College. From 1997 to 2003, Hana served as the co-founder and Artistic Director of Nasir Productions, a theater dedicated to underrepresented voices challenging traditional structure. Hana joined the Tony® Award-winning regional theater, Hartford Stage, in 2003. During her decade-long tenure at Hartford Stage, Hana served as the Associate Artistic Director, Director of New Play Development, and Artistic Producer. Hana launched the new play development program, expanded the community engagement and civic discourse initiatives, and developed and produced Tony®, Grammy, Pulitzer, and Obie Award-winning shows. Starting in 2012, she served as Program Manager at ArtsEmerson, a leading world theater company based at Boston's Emerson College. During her tenure at ArtsEmerson, Hana launched an Artists in Residency program, led a research program assessing barriers to inclusion across the region, and leveraged her regional theater experience to freelance produce for smaller theater companies looking to expand and restructure their administrative teams. Hana was Baltimore Center Stage's Associate Artistic Director from 2014 to 2019 and was the architect of the innovative CS Digital program: a platform that pushes the boundaries of traditional theater and looks at the nexus point between art and technology. Her other achievements at Baltimore Center Stage included prototyping the Mobile Unit focused on historically underserved audiences, strengthening community engagement, producing multiple world and regional premieres, and helping to guide the theater through a multi-million dollar building renovation and rebranding effort. Hana became the first Black woman to lead a major regional theater in 2018 when she was named the Augustin Family Artistic Director of The Repertory Theatre of St. Louis. During her tenure at The Rep, Hana guided the organization through a strategic alignment, revolutionized the New Works program, expanding access to underserved communities, and centering equity and anti-racism as the organization's foundational values. Hana holds a BA from Spelman College and an MFA from the University of Houston. Hana is the recipient of USITT's 2023 Distinguished Achievement Award, Spelman's 2022 National Community Service Award, the 2009-10 Aetna New Voices Fellowship, EMC Arts Working Open Fellowship, and Theatre Communications Group (TCG) New Generations Fellowship. Hana is a founding member of The Black Theatre Commons (BTC). She serves on the board of directors for the TCG, BTC, and the Sprott Family Foundation.

**EDGAR DOBIE** (*Executive Producer*) Born in Vernon, British Columbia, a village next to the Rocky Mountains (three years after Arena had its first performance in 1950), I am one of five brothers raised by my Dad Edgar, a mechanic and small businessman, and Mom Connie, a telephone operator and union organizer. I am the only Dobie to make a career in theater. Luckily for me, drama was an arts elective I was offered at the tender age of 12 so I hung up my hockey skates and joined the drama class, led by teacher Paddy Malcolm and her fledgling Powerhouse Community Theater after school. By the time I graduated from high school, we volunteers had built ourselves a 200-seat, fully equipped theater on its own piece of land in the center of town and found a sold-out audience for the full season of plays we had on offer. That experience taught me so many lessons about the power of theater to foster collaboration and share meaningful stories, as well as the public values that attach themselves to building a safe place where everyone is welcome. All those lessons served me well as a managing leader and producer both sides of the border and both sides of the commercial and non-profit theater divide. Arriving here in Southwest with my good wife Tracy and our daughter Greta Lee in 2009 makes me feel like I am well-equipped to do a good job for you all. I am honored to have been recognized for my service to, and leadership of, the Washington, D.C.-area theater community as a recipient of Theatre Washington's inaugural Victor Shargai Leadership Award in 2022.

This theater operates under an agreement between the League of Resident Theatres and Actors' Equity Association.



The actors and stage managers are members of Actors' Equity Association, the Union of Professional Actors and Stage Managers in the United States.



The scenic, costume, lighting and sound designers in LORT theaters are represented by United Scenic Artists, Local USA-829 of the IATSE.



The Director and Choreographer are members of the **STAGE DIRECTORS AND CHOREOGRAPHERS SOCIETY**, a national theatrical labor union.



The musicians in this production are represented by the Metropolitan Washington D.C. Federation of Musicians, AFM Local 161-710.

Arena Stage is a constituent of the Theatre Communications Group (TCG), the national organization for the American theater.

# BOARD OF TRUSTEES

## CHAIR

Catherine  
Guttman-McCabe

## VICE CHAIRS

Deborah E. Bowles  
Jeffrey M. Busch  
Susan Carter  
Anthony Coley  
Celandra Deane-Bess  
Edgar Dobie  
Kristen Donoghue  
David Fisher  
Vicki J. Hicks  
Alethia Jackson  
Raymond Janvier  
Danny Korengold  
David B.H. Martin  
Lucia Riddle  
Hana S. Sharif  
David E. Shiffrin  
Mignon Smith

## TRUSTEES

Andrew R. Ammerman  
Linda A. Baumann  
Jeri Epstein  
Richard A. Feinstein  
Elliot J. Feldman  
Stephenie Foster  
Ricki Kanter  
Daphne Kwok  
Elissa Leonard  
John Lynham  
B. Thomas Mansbach  
Tiffeny Sanchez  
Sheila Stampfli  
Michael S. Steele  
George White  
Karen Zacarias

## HONORARY TRUSTEES

Jim Abdo  
Decker Anstrom  
Ashok Bajaj  
Judith N. Batty  
Michelle G. Berman  
Steven R. Bralove  
Susan Haas Bralove  
Eric Braverman  
Joseph P. Digangi  
Rick Froehlich  
Natwar Gandhi  
Nicholas Goad  
Patti Herman  
Sue Henry  
Dr. Donald Wallace Jones  
Judy Lansing Kovler  
Mark Levine  
Jill McGovern  
Richard A. Newman  
Ronald A. Paul, MD  
Terry R. Peel  
Beverly Perry  
Ilene Rosenthal  
Raymond Sczudlo  
David Bruce Smith  
Richard W. Snowden  
Margaret Tomlinson  
Shawna Watley

## LIFE TRUSTEE

Lee G. Rubenstein

## YOUNG PATRONS BOARD TRUSTEE

Victoria Clark Hunter

## EMERITUS TRUSTEES

John M. Derrick  
Arlene and Robert Kogod  
David O. Maxwell  
Joan P. Maxwell

## CORPORATE OFFICERS

## PRESIDENT/EXECUTIVE PRODUCER

Edgar Dobie

## ARTISTIC DIRECTOR

Hana S. Sharif

## TREASURER

Judy Leventhal

## SECRETARY

Alison Irvin

# YOUNG PATRONS BOARD

The Arena Stage Young Patrons Board seeks to strengthen and support the future of American theater at Arena Stage. The Young Patrons Board supports the artistic mission of Arena Stage by being active ambassadors to the community and arranging opportunities for people under 40 years old to engage with the theater.

## MEMBERS

Michael F. Baylis II  
Julie Alderman Boudreau  
Dr. Adrienne Brown  
Michelle Brown  
Justine Casselle  
Dr. Alexandria Edwards  
Shoshana Golden  
Whitney Hubbard  
Linda Irizarry  
Lucrecia Johnson

Benjamin Lang  
Ashley Lawrence  
Lauren Pate  
Sasha Pierre-Louis  
Emily Rouse  
Hillary Stemple  
Michael Walker

## CHAIR

Victoria Clark Hunter

# ARENA STAGE LEGACY GIVING ADVISORY COUNCIL

The Arena Stage Legacy Giving Advisory Council includes current and former trust and estate attorneys, financial advisors, and wealth managers. The Council serves as a resource, sounding board, and consultative body that enhances the professional development expertise of Arena Stage and helps build enthusiasm for legacy gifts for the theater. We are so grateful to the Council members for their service:

**Edward Jay Beckwith**,  
private wealth attorney,  
Partner, BakerHostetler

**Debbie Bowles**\*, CFP®,  
retired wealth manager,  
Wells Fargo Advisors

**Mara Bralove**, CFP®, family  
wealth advisor, The  
Bralove Group at Morgan  
Stanley

**Celandra Deane-Bess**\*,  
CFP®, Senior Vice  
President, Private Client  
Advisor, Bank of America  
Private Bank

**John Lynham, Jr.**\*, estate  
planning attorney,  
Principal, Offit Kurman

**Aimee Griffin, Esq.**,  
LLM, estate planning  
attorney, President  
of the Association of  
Black Estate Planning  
Professionals and  
Principal, Life & Legacy  
Counselors

**Anna Katherine "A.K."**  
**Moody**, J.D., LL.M., private  
wealth strategist, BNY  
Wealth

**Lisa McCurdy**, estate  
planning attorney,  
Managing Partner, The  
Wealth Counselor, LLC,  
and CEO, Defining Legacy  
Group, LLC

**Richard "Dick" W.**  
**Snowdon**\*, retired estate  
planning attorney

\*Arena Stage Trustee or  
Honorary Trustee

# ARENA STAGE'S PLANNED GIVING PROGRAM



Arena Stage is deeply grateful to those individuals who secure the future of our theater through gifts made in their wills, trusts, or by beneficiary designation. Your generosity ensures we can continue to challenge, educate, and entertain audiences, preserving our commitment to excellence in theater nationally and internationally for generations to come.

We are especially grateful for those who have participated in our Legacy Match, where current donors match your new or increased legacy commitment, costing you nothing now to provide both current and future support.

If you are interested in learning more about the Legacy Match and joining the Full Circle Society, please get in touch with Maya Weil, CAP®, at (202) 600-4158 or [mweil@arenastage.org](mailto:mweil@arenastage.org).

The following are members as of August 12, 2025

## MEMBERS

Anonymous (11)  
Esthy\* and Jim Adler  
Andrew R. Ammerman  
Dr. Bill Santford Ashley  
Elinor R. Bacon  
Linda A. Baumann  
Gail Becker  
Nan Beckley  
Mary Bender  
Sue Benson  
Diane Boehr  
Deborah E. Bowles  
Susan and Steven Bralove  
Dr. Robert and Mary Jo Brenner  
Bonnie\* and Jere Broh-Kahn  
Louise Budelis  
Donald Burch, III  
James C. Burks and Dr. Bette Jane Pappas  
Anne L. Buzalski  
John P. Cahill  
Susan E. Carter and Ricardo A. Contreras  
Ellen MacNeille Charles  
Donald J. and Anita P. Cowan  
Captain Joan Darrah and Ms. Lynne Kennedy  
Martin Alan "Marty" and Belle Negrin Davis  
Joseph P. DiGangi  
John Edelmans and Jeffrey Love  
Vivian B.\* and Lisa D. Eggers  
Barbara B. Ehrlich  
Jeri and Gary Epstein  
Isaac Evans  
Skip and Laurette Farmer  
Nancy M. Folger  
Gary P. Fontaine  
Catherine F. and James F.\* Fort, Sr.  
Dr. Ellen Fox  
Larry Franks and Ellen Berelson  
Becky Fredriksson  
Dr. Helene C. Freeman  
Arlene Friedlander  
Rick and Carol Froehlich  
Steven Garron  
Suzan and Gary Gladstone  
Jon K. Gossett and Alex Urdaneta  
Bob Gronenberg  
Catherine and Christopher Guttman-McCabe  
Rita and Wilbur Hadden  
Chris Harris  
Betty Hawthorne

Dr. JC Hayward  
Vicki J. Hicks  
Richard and Pamela Hinds  
Sallie L. Holder  
Lauren\* and Glen Howard  
Ann Ingram  
David Insinga and Robert McDonald  
Thomas Jesulaitis and Barrie M. Seidman  
James Johnson and Matthew Shepard  
Dr. Seth A. Koch and Barbara Bellman Koch  
Patricia and John Koskinen  
Justin Latus  
Thelma K. Leenhouts  
Herb and Dianne Lerner  
Carol Ann and Kenneth Linder  
John and Patricia Long  
John and Lenora Lynham  
Sandra L. Mabry  
Alison Masters MacTavish  
Wells R. McCurdy  
Alfred Munzer and Joel Wind  
LaVerne G. Naughton  
Paul and Nancy Newman  
Marina and David Ottaway  
Laura Peebles  
Amy Phillips  
Robert Pincus  
Michael and Penelope Pollard  
Mr. and Mrs. Thomas J. Reckford  
Paul Rose  
Richard Schwartz\* and Beth Newburger Schwartz\*  
Larry Shaw and Richard Freitag  
David E. Shiffrin  
Mark and Merrill Shugoll  
Mike and Patti Sipple  
Leonard Sirota, Eileen Ivey and Rachel Sirota  
Molly Smith and Suzanne Blue Star Boy  
Dick and Katie Snowdon  
Sheila A. Stampfli  
Aileen and Jack Sullivan  
Terri L. Tedford  
Helene Toiv  
Margaret L. Tomlinson  
Maya Weil  
Val and John Wheeler  
Alexander and Michelle Zajac  
Pamela Zitron and Jacob Gallun

## BEQUESTS AND GIFTS IN REMEMBRANCE

Anonymous (2)  
Estate of Dr. and Mrs. Clement C. Alpert  
Estate of J. Alton and Cynthia Boyer  
Estate of H. Max and Josephine F. Ammerman  
Estate of Jan Ellen Balkin  
Estate of Audrey J. Barnett  
Estate of Harry J. Boissevain  
Estate of Henrietta T. Braunstein  
Estate of Dorothy A. Bunevich  
Estate of Mary Lou Calene  
Estate of Patricia Carroll  
Estate of Albert Chaiken  
Estate of Judith Claire  
Estate of Helen G. Coddling  
Estate of Marcus Cohn  
Estate of Israel and Augusta Convisser  
Estate of Camille Cook  
Estate of Robert D. Davis Jr. and Henry J. Schalizki  
Estate of Mr. William E. Faragher  
Estate of Zelda Fichandler  
Estate of Donald H. Flanders  
In Memory of Helen W. and Felix E. Geiger  
Estate of Ann Gibbons  
Estate of Ezra Glaser  
Estate of George Grizzard  
Estate of Margaret M. Hansen  
Estate of Giselle Hill  
Estate of Joan E. Kain  
Estate of Margot Kelly  
In Memory of Jean Russ Kern and Jeannette G. Kern  
Estate of Gladys Kessler  
Estate of Herbert A. Lindow  
Estate of LaRue R. Lutkins  
Estate of Jeannette Murphy  
Estate of Marianne R. Phelps  
Estate of Suzy Platt  
Estate of Judy Lynn Prince  
Estate of Ms. Jane Rissler  
Estate of Toni A. Ritzenberg  
Estate of Gruine Robinson  
Estate of Hank Schlosberg  
Estate of Eugene Schreiber  
Estate of Helga Tarver  
Barbara R. Walton Endowment Fund for New Playwrights  
Estate of Eric Weinmann  
Estate of Frankie and Jerry Williamson

THANK YOU FOR LEAVING YOUR LEGACY AT ARENA STAGE

# INDIVIDUAL DONORS

Arena Stage gratefully acknowledges the many individuals and families who support the theater's work by contributing to the Annual Fund. These gifts make it possible for the theater to continue presenting high-quality productions and innovative education programs that strengthen the community in which we live.

For more information on the benefits of becoming an Annual Fund contributor, please call the Development Department at 202-600-4177.

The following are members as of August 12, 2025.

## OVATION CIRCLE

Anonymous (1)  
Decker Anstrom and Sherry  
Hiemstra  
Margot Kelly\*  
Arlene and Robert Kogod  
Judy Lynn Prince\*  
The Toni Ritzenberg Fund  
for Educational and  
Community Outreach  
Programs at Arena Stage  
Tiffany Sanchez and Reg  
Brown

## FOUNDER'S CIRCLE

Susan and Steven Bralove  
Rick and Carol Froehlich  
Reinsch Pierce Family  
Foundation by Lola C.  
Reinsch  
Beth Newburger Schwartz\*  
and Richard Schwartz\*  
Peggy and David Shiffrin

## BENEFACTOR'S CIRCLE

Anonymous (1)  
Andrew R. Ammerman  
Linda A. Baumann  
Michele and Allan Berman  
Judy and Peter Blum Kovler  
Foundation  
Deborah Bowles  
Susan E. Carter  
Anthony Coley  
Kristen Donoghue and Jon  
Hacker  
Pam and Richard Feinstein  
Bonnie Feld  
Drs. Elliot J. Feldman and  
Lily Gardner Feldman  
Mr. and Mrs. David Fisher  
Henock Gebreamlak and  
Nicholas Goad  
Chris and Catherine  
Guttman-McCabe  
Daniel W. Hamilton  
Sue Henry and Carter  
Phillips  
Vicki J. Hicks  
Ricki and Joel Kanter

Daniel Korengold and  
Martha Dippell  
Herb and Dianne Lerner  
The Revada Foundation of  
the Logan Family  
B. Thomas Mansbach  
David and Martha Martin  
Richard and Janice  
Newman  
Ilene and Steven Rosenthal  
Thalia Sinnamon in memory  
of Lyn Sinnamon  
Mr. and Mrs. Richard W.  
Snowdon  
Sheila Stampfli

## LEADERSHIP CIRCLE

Jeff Busch  
Jeri and Gary Epstein  
Stephanie Foster  
Larry Frank and Ellen  
Berelson  
Virginia McGehee Friend  
Alethia Jackson  
Thomas Jesulaitis and  
Barrie Seidman  
John and Lenora Lynham  
Dr. Jill E. McGovern  
Melanie and Larry\*  
Nussdorf  
Mr. and Mrs. Robert P.  
Pincus  
Leonard Sirote and Eileen  
Ivey  
Hon. Michael Steele

## PRESIDENT'S CIRCLE

Erin and Derek Arison  
Eric Braverman and Neil  
Brown  
Ellen MacNeille Charles  
Joseph P. DiGangi  
Edgar and Tracy Dobie  
Vivian B.\* and Lisa D.  
Eggers  
David C. Frederick and  
Sophia Lynn  
Patti and Mitchell Herman  
Sheldon Katz  
Mark Levine and Sara  
Imershein  
Mark T. Lowellyn

Nancy and Dan Longo  
The Robert and Natalie  
Mandel Family Foundation  
Margaret Ann Ross  
William and Linda Rule  
Peggy and Alec\* Tomlinson  
Joseph and Linda Young

## PRODUCER'S CIRCLE

Anonymous (2)  
Keith and Celia Arnaud  
Nan Beckley  
Sharon Bennett MD  
Bonnie C. Carroll and Roy  
Cooper  
Gail Chambers and Scott  
Baker  
Richard H. Cleva  
Kathy and Jody Dreyfuss  
Meg and John Hauge  
Donald E. Hesse and  
Jerrilyn Andrews  
Judy Honig and Stephen  
Robb  
David Insinga and Robert  
McDonald  
Dr. Donald Wallace Jones,  
Dr. Betty Jean Tolbert  
Jones and Tracey Tolbert  
Jones  
Caroline S. Klemp  
Jean and John Lange  
Ryan E. Merkel  
Ray Olson  
Craig Pascal and Victor  
Shargai\*  
Janis Reed and Jack Requa  
R. Lucia Riddle and William  
Reddick  
Aileen and Jack Sullivan  
Suzanne Thouvenelle and  
Dennis Deloria  
Virginia D. Weber  
Steve and Irene White  
Jane Yanulis

## DIRECTOR'S CIRCLE

Anonymous (4)  
Jim and Mai Abdo  
Friend of Arena  
Dr. and Mrs. C. Wrandle  
Barth

Judith N. Batty  
Sander M. Bieber and Linda  
E. Rosenzweig  
Lucille A. Bland  
Constance Bohon MD  
David and Judy Bonaker  
Joe and Sue Bredekamp  
Jere Broh-Kahn  
Blain and Peg Butner  
William Caldwell and  
Michele Toth  
John Chester  
Debbie and Adam Cohen  
Beth Cunningham and  
David Wolfe  
James and Dorothy Dake  
Belle N. Davis in memory of  
Martin "Marty" Davis  
John and Linda Derrick  
John Edelmann and Jeff  
Love  
Trudy Fleisher  
R. Frances O'Brien and  
Stephen Flott  
Mr. Gary Fontaine  
Bill and Linda Garvelink  
Gregg H. S. Golden  
Carol and Bill Gross  
Susan B. Haight  
Laura Hart  
Holly Hassett  
Paul R. Henderson  
Martin and Nene Hill  
Richard and Pamela Hinds  
Theo W. Hodge Jr., MD and  
Frederick Eugene Taylor,  
Jr., AIA  
John and Anne Holman  
Lauren\* and Glen Howard  
Whitney Hubbard  
Dr. James and Deborah  
Karesh  
Cal and Barbara\* Klausner  
Drs. Susan and Perry Klein  
Thelma K. Leenhouts  
Caroline Lewis  
Abby Mandel  
Vicky Marchand  
Steve Mayer and Vera Oye\*  
Yaa-Anna  
Richard and Erin Mills  
David Montgomery  
Marina and David Ottaway  
James T. Parson, Jr.

## CONTINUE SUPPORTING THE ARTS LEAVE A LEGACY HERE AT ARENA STAGE

Everyone needs an estate plan to ensure their assets benefit the people and causes they value the most. Please consider leaving a gift in your will or designating Arena as a beneficiary of your retirement plan or Donor Advised Fund to help future generations enjoy theater. If you have already included Arena, let us know so we can include you in the Full Circle Society.

For more information, contact **Maya Weil, CAP®**, Arena's Gift Planning Specialist at 202-600-4158 or [mweil@arenastage.org](mailto:mweil@arenastage.org)







## Amplifying artists of every age.

AARP celebrates artists over 50 of every form. Through our Brain Health work, we know that art keeps us mentally sharp, as it connects us and preserves our collective story. We're uplifting these dynamic artists who have mastered their craft in the areas of costume design, dance and hip-hop music.

**Nasha Thomas**

National Director,  
AileyCamp Master Teacher

**Ruth E. Carter**

Award-Winning  
Costume Designer

**Doug E. Fresh**

Hip-Hop Legend



Discover more today at  
[AARP.org/BlackCommunity](https://AARP.org/BlackCommunity)

# INDIVIDUAL DONORS

Toni and Ronald Paul  
Laura Peebles and Ellen  
Fingerman  
Ann and Terry R. Peel  
Alan Perkins and Barbara  
Bonessa  
Mazel Pernel  
Paula and William Phillips  
Mr. Michael Pollard and  
Mrs. Penelope Pollard  
Franklin D. Raines and  
Denise Grant  
Mary Ann Re  
Nancy Regan  
Jill and Rick Robinson  
Trina and Lee Rubenstein  
Blair and Sally Ruble  
Deborah Rutter  
Jo Ella Samp  
Jean Schiro-Zavala and  
Vance Zavala  
Raymond and Deborah  
Sams Sczudlo  
McAdo Shuler, Jr.  
Dave Steadman  
Robert J. Surovell  
Barbara Tooill  
Mary Vavrina  
Shawna Watley  
George and Patti White  
Bill and Terry Witowsky  
Richard and Leslie  
Wojciechowicz  
Deborah and David Yaffe  
Judy and Leo Zickler

## PLAYWRIGHT'S CIRCLE

Anonymous (6)  
General Clara Adams-Ender  
Julie Alderman Boudreau  
Garland Allen  
The Estate of Dr. and Mrs.  
Clement C. Alpert  
Dean Amel and Terry  
Savala  
Chris Andreas  
Janet and David Batlan  
Sue Benson  
Yvette Benton Bullock  
Robert C. and Elissa B.  
Bernius  
Michelle Brown  
Candice C. Bryant  
Susan and Dixon Butler  
William and Kathleen Carey  
Dr. Myla Carpenter  
Justine Casselle  
Lynne H. Church  
Victoria Clark Hunter  
Jeremy and Stefanie Cohn  
Karen and Joseph Coleman  
Wilson Compton  
Valerie and John Cuddy  
Deanna K. Dawson  
Nancy Dawson  
Cynthia J. Decker  
The Charles Delmar  
Foundation  
Dr. Gloria J. Edwards  
Dr. James Ellyz and Mr.  
Francis O'Malley  
The Farmer Family  
Geraldine Feaster and  
Calvin Bethea\*  
Lorraine Fleming and Harry  
Parrish  
Ellen Fox MD  
Mr. and Mrs. Davis R.  
Gamble Jr.  
Lenue and Barbara  
Gilchrist  
Eileen M. Gleimer  
Amnon and Sue Golan  
Sally W. Gresham  
Gail Gulliksen  
Chris Harris  
Patricia Harvey

Doris Hausser  
Shawn C. Helm and J.  
Thomas Marchitto  
Neeta Helms  
Ms. Margaret Hennessey  
Arthur Hyland and Suzanne  
Jenkins  
Mark Irion and Cindi  
Merifield  
Linda Irizarry  
John Iwaniec and Tracy  
Gray  
Dr. and Mrs. William B.  
Jackson II  
John Keator and Virginia  
Sullivan  
Kyle Kerr and Stephen  
Bique  
Tuke and Pierce Klemmt  
Lauren S. Kogod  
Leslie S. Kogod  
Benjamin Lang  
Carrie and Howard  
Langsam  
Ashley J. Lawrence  
Stuart and Brock Lending  
Ryan Neels Terry and Louis  
Loh  
Sam and Ellen  
Laird Lott and Linda  
Gooden  
Jim and Sharon Lowe  
Lorraine and Craig Martin  
C. Wakefield Martin and  
Pauka S. Thiede  
Mark and Marsha Mazz  
Susan Hall McCannell  
Steve and Sylvia Moore  
Martha Newman  
Sheila and Ford Newman  
Frank and Linda Nutter  
Kay A. Oliver, Ph.D.  
Joe Oppenheimer and  
Edith Fraser  
Anne Paine and Fowler  
West  
Lauren Pate  
Howard and Dorothy  
Pedolsky  
Judy Perry, Col (USAF  
Retired)  
Randy and Kathy Pherson  
Sasha Pierre-Louis  
Dr. and Mrs. Nathaniel Pitts  
Steven Polakoff  
Margaret Pollack and Paula  
Reed Lynch  
Marjorie Lynne Powell  
Ane Powers  
Lutz Prager and Pat Lark\*  
Vincent and Nancy Radosta  
Mr. and Mrs. Thomas J.  
Reckford  
Elise and Dennis Reeder  
Christopher Robinson  
Gareth Rosenau  
Bruce and Lori Laitman  
Rosenblum  
Cathy Rutherford and Lisa  
Levine  
Jeff and Ellen Sandel  
Carol Schwartz  
Linda and Arthur Schwartz  
Richard and Jacqueline  
Sellers  
Erin P. Shannon  
Lisa and Jim Shannon  
Hana Sharif  
Elizabeth Lavette Shorb  
Bobbi and Larry Shulman  
Eugene and Kelly Soh  
Mike and Patti Sipple  
Laura Smalligan and Eric  
Sandberg-Zakian  
Annelise and Robert H.  
Smith  
Carl Wayne Smith and  
Michael Burke

Lawrence and Arlene  
Spinnelli  
Cecile Rhodes  
Greig Stewart and James  
Hudson  
Bill Swedish and Linda  
Griggs  
Eileen and Michael Tanner  
Linda and Steuart Thomsen  
Laura L. Tosi  
John and Val Wheeler  
Jack and Sue Whitelaw  
Debbie and Daniel Williams  
Robert and Anne Yerman  
Jon and Sandra Willen  
Jeffrey and Johanna Zinn

## LEAD

Anonymous (10)  
Dr. and Mrs. Nelson  
Adamson  
Jenna and Bill Allen  
Hon. Frank and Mrs.  
Antoinette Almaguer  
Tonia and Scott Anderson  
Virginia Anthony  
Kathy and Lawrence  
Ausubel  
Michael Baker  
Ann and Mal Barasch  
Anna K. Behrensmeyer  
Karen Beiley and Eric  
Fingerhut  
Elizabeth L. Blakeslee  
Dr. and Mrs. Gerald Borsuk  
Anne Boyden  
David Barkley and Jeffery  
Wingate)  
Rita Braver Barnett  
Diane Brown  
Dr. Adrienne Brown  
Harold R. Bucholtz  
Donna Butts and William  
Libro  
Ms. Patricia Carter  
Cecilia M. Chandler  
Nancy Chesser and J.M.  
Rowe  
Jo Ann and Wesley Chin  
Angela Clark  
Rese Cloyd  
Francis and Terry Coates  
The Manny and Ruthy  
Cohen Foundation  
Michael Crosswell  
Johanna S. Cummings in  
memory of Ian Cummings  
Mr. and Mrs. Philip Currie  
Richard Dagen  
Julie Davis and Clyde  
Relick  
Pat Davis and Wes  
Callender  
Lorraine Day  
Angela Dickkey and Patricia  
Norland  
Althea Dixon  
Don Douglas and Carolyne  
Weil\*  
Cheryl Dragoo  
John Driscoll  
Sue Duncan and Leo Fisher  
Mrs. Elizabeth Edgeworth  
Rick and Renee Edson  
Evelyn and Barry Epstein  
Mr. and Mrs. Michael Flyer  
Allan D. Friedman  
JoEllen and Martin Frost  
Charles A. Fulton  
Richard Gervase and Stuart  
Delery  
Amy C. Gilbert  
Aaron Glick  
Mark\* and Sara Goldberg  
Paula S. Goldman  
John M. Goodman  
Andrew and Sharon Goods

Janet Hall Graft  
The Greene-Milstein Family  
Foundation  
Bob Gronenberg  
Jack E. Hairston Jr.  
The Honorable Robert and  
Susan Hale  
Robert and Barbara Hall  
Robert and Carol Hall  
Mr. and Mrs. Peter D. Hart  
Ms. Barbara Hawthorn  
Harold L. Hickson  
Liz Hilder and Randy Smith  
Lucia and Fred Hill  
Jessica Hirschorn and  
Henry Howard, Jr.  
Clarence G. Hoop  
John and Debra Howard  
The Katherine Lindsay  
Howell Fund  
Drew Huffman  
Ms. Lyn Ingersoll  
Patricia Jackman and  
Stephen L. John  
Norm and Anita Johnson  
Jason Johnston  
Wayne and Susan Jonas  
Charlotte Jones Voiklis  
Thelma D. Jones  
Robin Jenkins

Martha L. Kahn in memory  
of Simeon M. Kriesberg  
Dr. and Mrs. Ron Karpick  
Mrs. William Kingsbury  
Mr. Frederick Leon Klein  
Patricia and John Koskinen  
Ms. Jane Mary Kwass  
Daphne Kwok  
John and Jane Lewis  
Carol Ann and Kenneth  
Linder  
Mrs. E. Kathleen Linville  
David Lloyd, Realtor  
Shirley Loo  
Kenneth C. and Elizabeth  
M. Lundeen  
Ms. Linda Marks and Mr.  
Rafael V. Lopez  
Margaret Marin  
Joanne S. Martin  
Lou Mayo  
Tina Mather  
Lou Mazeway  
Dr. Florence K. Millar  
Sheila Millar  
David Mitchell  
Jim Moss  
Marlene Moss  
Alfred Munzer and Joel  
Wind  
Aaron Myers  
Donald and Lynne Myers  
Meenakshi and Arvind  
Nandedkar  
Jeffrey Neal and Kevin  
Loeffler  
Nick Newlin  
William and Louisa Newlin  
Doris Parker and Michael  
Spatz  
Dave Pawlik and Susan  
Albertine  
Stan Peabody  
Anne E. Peret  
Daniel Pink  
Carroll Quinn  
Frederick Robinson  
June A. Rogul  
Denise A. Rollins  
Helen Ross  
Dr. Bernard and Louise  
Rostker  
Jeanne Ruesch  
Elizabeth Sachs  
Alan and Florence Salisbury  
Jean Sammon

Today is the day to  
inspire, delight  
and amaze.



We're proud to support Arena Stage and the joy you bring to our community every day.

[pnc.com](https://pnc.com)



©2022 The PNC Financial Services Group, Inc. All rights reserved. PNC Bank, National Association. **Member FDIC**  
CON PDF 0618-0106

# INDIVIDUAL DONORS

Evelyn Sandground and Bill Perkins, in memory of Frank and Marta Jager  
Sally Simms  
Ray Smith  
Molly Smith and Suzanne Blue Star Boy  
Sharon Steele  
Drs. Robert J. Stillman and Linda Klieger Stillman  
Patricia Stonessifer and Michael Kinsley  
Dr. Sheila Taube  
Elizabeth and Jerome Teles  
Steuart and Linda Thomsen  
Elizabeth Thornhill  
Cameron and Susan Weiffenbach  
Walter Wentz  
Helen White and Andy Leighton  
Jaun Whitehead  
Jon Willen  
Robert and Gwendolyn Williams  
J. David Willson  
Robert Wilson

## SUPPORTING ROLE

Anonymous (17)  
Susan Absher  
Ms. Carol J. Anderson  
Victoria Arana  
Kevin Baker  
Marion S. Ballard  
James Barnes  
Mary Barton and Beth Biegelsen  
Edward and Iris Beckwith  
Peter and Ellen Berty  
Tom Blackburn  
Ann Blackman and Michael Putzel  
Edward Blanton and Rusty Lynn  
Nettie Bouchie  
Cynthia Boyer\*  
Steven Brady  
Kim Brailey  
Wendie Briggs  
Valerie Briggs and Peter Kelley  
William and Emily Brittle  
Hazel Broadnax  
Ms. Carolyn Broussard\*  
Kathy Brown in memory of Ted Bean  
Richard Allen Brown  
Terrence J. Brown and Linda D. Whitlock-Brown  
Karen Bruton  
Susan and Mike Burk  
Avery Burns  
Rev. Dr. and Mrs. Cameron Byrd  
Sandra and Paul Byrne  
Marni Byrum and Martha McQuade  
John P. Cahill  
Carla Cartwright  
Allayne and Brian Chappelle  
Tracey Chunn  
Pamela Colbert  
Ann Collins  
Brian Collins  
John and Sheila Compton  
James and Ann Connell  
Ray and Mary Converse  
Randi and Joseph Barbara and Paul Couture  
Janice King Crawford  
Susan M. Crawford  
Timothy Harr and Winfield Crigler  
Laurie Davis and Joe Sellers  
Christiane Daubert and Melvin Murphy  
Lisa and Tony Delity

Mr. Stephen Dennett  
Edward Donahue, III  
Clark and Emilie Downs  
David Dunn  
Ms. Helen Epps  
Peter and Ginger Sunday  
Evans  
Ralph and Gwendolyn Everett  
Gary Felsner  
Jill A. Fields  
Bonnie and Larry Fields  
Angelo Fiorenza  
Cathy and Donald Fogel  
Heather Foley  
Mr. Russell Fox  
Paul Frampton  
Leslie Frantz  
Catherine Gahres and James Woolford  
Paul Gamble  
Natwar Gandhi and Panna Naik  
Susan B. Garland  
Rachel Gartner  
James and Maria Gentle  
Dr. Kirk Geter  
Wayne and Laura Gifford  
Maggie Godbold and Steve Bershader  
Martha Goldstone  
Donna M. Gollnick  
Joyce and Richard Gordon  
Gerry and Alan Graham  
Palmer and Barry Graham  
Madi Green, in memory of Duff Green III  
Karen T. Grisez  
Sue Guenther  
Wilbur Hadden  
Daniel and Therisia Hall  
Frona Hall  
Mr. Lars Hanson and Ms. Rosanne LeVitre  
Jim and Ardith Harle  
Brenda Hawkins  
Rachel Hecht  
Bert Helfinstein and Margaret Rodenberg  
Paul Herman and Karen Goldman  
Jill Herscot  
Jonathan Herz and Steven Hill  
Dorothea Hiltenbrand  
Karen Hirakawa  
Toby Horn  
Roger and Neesa Hoskin  
Jerry Hungerman  
Heather Huyck  
Geraldine Inge  
Ann Ingram  
Corinne and Bill Irwin  
Barbara and John R. Jackson  
Lorie D. Jackson  
Smyrna N. Jackson  
Paul and Pam Jaikaran  
Raymond Janvier  
Diane Johnson-Quinn and Vincent Quinn  
Kenneth and Thereese Johnston  
Kimberly and Tad Johnston  
Robert Kain  
Robbie Katson  
Joseph and Jane Keady  
Michael Kielbiewicz and Barbara Strong  
Peter Kimmel and Stephanie Jackson  
Kenneth and Carol Doran Klein  
Emily Irish Kohler  
Mary Lou and Jack Kramer  
The Drs. Sharon and Dan Kuebbing  
Paul Kung  
Justin Latus  
Allan and Sondra Laufer  
Robin Lee

The Lee-Verdon Family  
Philip and Lisa Leibow  
Steve Leinwand and Ann Lawrence  
Dave Levy  
Michael and Paula Levy  
Dr. and Mrs. Randall J. Lewis  
Chris and Christine Magee  
Martin Malsch and Jane Axelrad  
Harry Manin  
Captain Lory Manning USN (RET)  
Susan and Dan Mareck  
Elizabeth H. Margosches  
Carol Marsh  
Steve Marsh  
Michelle Mason  
Russell Matthias  
Hans and Marianne Mayr  
William McBride and Susan Caporaso McBride  
Elizabeth Ann McGrath  
Margaret McKelvey and William Harkins  
Sarah McMeans  
Cheryl McQueen  
Terry and Tom Melo  
Lenore Meyers  
Peter and Kathy Michelman  
Sandy Mitchell  
William and Sheila Moore  
Mary Beth Moore and Douglas Ruby  
Bob and Wendy Morris  
Mr. Robert J. Morse  
Robert and Mimi Morse  
Helaine G. Moss  
Delphine Motley  
Jack Moyer and Jane Passman  
William Muddiman  
Marilyn L. Muench  
Sara Najjar-Wilson  
Hedy Nash and John Wetterau  
Ms. Laurence Nolan  
Louise Novitch  
Jeri and Bill Oakerson  
Col and Mrs. Tommy T. Osborne  
Lydia and Sandy Parnes  
Wilson and Deborah Parran  
Bill and Jenny Pate  
Ms. Barbara Patocka  
Scott Pearson  
Michael Perel and Jeanne Kadet  
Jeanne and Burnie Peters  
Margaret and Carl Pfeiffer  
Sophia Phillips  
Gavin Pinchback  
Gail Povar and Larry Bachorik  
Wendell and Kathy Primus  
Emily Johnson and Vijay Ramachandran  
Catherine Remijan  
Maria Farese Rendine  
Dennis Renner  
Richard B. and Constance Rhind Robey  
Marietta S. Robinson  
Dr. Tommie L. Robinson, Jr.  
Paul Rose  
Setsuko Rosen and Robert Luther  
Steven M. Rosenberg and Stewart C. Low III  
Herbert and Nancy Rosenthal  
Sheryl Rosenthal and Marty Bell  
Kenneth and Chris Sale  
Carol Sadler and Steve Geimann  
Linda B. Schakel  
Susan Scheider  
Richard Schiller

Dr. Frederick\* and Peri Schuyler  
Jennifer Segal  
Sandra and David Sellers  
Charlotte Selton  
Skip and Dee Seward  
Barbara Sloan  
James A. Smailes  
Donald M. Smith and Claire L. Filemyr  
Pamela Brown Smith  
Rochelle Steinberg (Shellie)  
Peter and Ann Tanous  
Ruth Tate  
Rassoul Teimouri  
Dennis and Rosalind Thomas  
Deborah Thompson  
Mr. Al Thomsson and Ms. Carol Michaelsen  
Patricia Thorne  
Juergeen Tooren  
Rita C. Toscano  
Roger and Elizabeth Trangsrud  
Angela Tucciarone  
Kathryn Turner  
Lyman G. Van Nostrand  
Dr. Carolyn Peoples Veiga  
Steve Verna  
Geoffrey and Susan Vincent  
Ms. Maria Wagner  
Kathy Waldman and Steve Sabat  
Michael Waldman and Linda Coe  
Howard Walgren and Lee Allen  
Richard and Joann Weiner  
Greg and Mary Whiteman  
Robert and Barbara Whitten  
Linda Jepson Willen  
Bernetta and Kevin Williams  
Jean and Sam Williams  
Patricia Page Williams  
Frank Winfield  
Antoinette WinklerPrins  
Karia Winters  
David Woodson  
Elaine Wunderlich  
Edith Wyeth  
Adrienne Wyker  
Karen and Todd Yoder  
David Young  
Karen Zacarias and Rett Snoterly  
Victor Zitel

\*Deceased

**Legend:**  
**Ovation Circle**  
\$100,000 and above  
**Founder's Circle**  
\$50,000-\$99,999  
**Benefactor's Circle**  
\$25,000-\$49,999  
**Leadership Circle**  
\$15,000-\$24,999  
**President's Circle**  
\$10,000-\$14,999  
**Producer's Circle**  
\$6,000-\$9,999  
**Director's Circle**  
\$3,000-\$5,999  
**Playwright's Circle**  
\$1,500-\$2,999  
**Lead**  
\$700-\$1,499  
**Supporting Role**  
\$350-\$699





exelon<sup>SM</sup>

# We Share Your Dream for the Future

Powering our communities is just the beginning. At Exelon, we consider it our responsibility to improve the quality of life for people in the communities where we live, work and serve. Participation in good corporate citizenship is an integral part of our culture, and we inspire our employees to help everyone succeed.



# INSTITUTIONAL DONORS

The vital support Arena Stage receives from many institutions makes our work possible. We thank those who have generously donated \$1,500 or more to our Annual Fund campaign this year. This list represents supporters as of September 3, 2025.

## OVATION CIRCLE

PAUL M. ANGELL  
FAMILY FOUNDATION

DIANE & NORMAN  
BERNSTEIN  
FOUNDATION

Bloomberg  
Philanthropies

DC COMMISSION ON ARTS & HUMANITIES

Mellon  
Foundation

U.S. COMMISSION OF FINE ARTS  
ESTABLISHED BY CONGRESS 17 MAY 1910

THE SHUBERT  
FOUNDATION INC.

Anonymous

## FOUNDER'S CIRCLE

THE MORRIS AND GWENDOLYN  
CAFRIITZ FOUNDATION

Share Fund

## BENEFACTOR'S CIRCLE

AARP

BANK OF AMERICA

BERNSTEIN  
Management Corporation  
PEOPLE FIRST.

CLARK  
CONSTRUCTION

exelon

PNC

deLaski Family Foundation  
William S. Abell Foundation

## LEADERSHIP CIRCLE

Anonymous  
The Theodore H. Barth Foundation, Inc.  
Dallas Morse Coors Foundation for  
the Performing Arts

amazon

Dove

CROWN  
COALITION

GLENMEDE

Let's ride together  
OURISMAN  
AUTHORITY OF VIRGINIA

## PRESIDENT'S CIRCLE

Alice Shaver Foundation  
BakerHostetler LLP  
Boston Consulting Group  
Mars Foundation  
S&R Evermay  
Southwest Business Improvement District  
The Morgan Fund at Seattle Foundation  
Venable Foundation

## PRODUCER'S CIRCLE

The Davis/Dauray Family Fund  
Dimick Foundation  
Friends of Southwest DC  
Hattie M. Strong Foundation  
The Nora Roberts Foundation

## ARENA STAGE'S OFFICIAL RESTAURANT PARTNER

*Philippe*  
by Philippe Chow

With additional support from ArentFox Schiff;  
Enterprise Mobility Foundation; Giant Food, LLC;  
The Howard and Geraldine Polinger Foundation;  
Potomac Law Group, PLLC; Wawa Foundation.

### Legend:

Ovation Circle.....\$100,000 and above  
Founder's Circle.....\$50,000-\$99,999  
Benefactor's Circle.....\$25,000-\$49,999  
Leadership Circle.....\$15,000-\$24,999  
President's Circle.....\$10,000-\$14,999  
Producer's Circle.....\$5,000-\$9,999

Please contact the Development Office at 202-600-4177  
for more information about joining the Inner Circle or  
becoming an institutional sponsor.

We endeavor to provide a complete listing of all donors  
in the above categories. If you name is not listed, please  
contact the Development Office.

We are also grateful to the thousands of other  
contributors to Arena Stage, whose names space will  
not permit us to print.

# ARENA STAGE THEATER STAFF

Artistic Director.....Hana S. Sharif  
Executive Producer.....Edgar Dobie  
Founding Director.....Zelda Fichandler  
(1924-2016)  
Founding Executive  
Director.....Thomas C. Fichandler  
(1915-1997)  
Artistic Director Emeritus.....Molly Smith

## ADMINISTRATION

Chief of Staff.....Alison Irvin  
Chief Financial Officer.....Judy Leventhal  
HR Manager.....Rachel Harrington  
Controller.....John Monnett  
Accounting Manager.....Christopher Murk  
Staff Accountant.....Mark Runion  
Payroll & HR Administrator.....Tyra Picazo  
Human Resources Consultant.....Lighterfly:  
Susan Shin, Jill Hulnick, Stella Lim  
Auditors.....Marcum LLP  
Legal Counsel.....ArentFox Schiff LLP;  
Kramer Levin Robbins Russell

## ARTISTIC

Senior Director of Artistic Strategy  
and Impact.....Reggie D. White  
Casting Director/Line Producer.....Raiyon Hunter  
Artistic Producer/Executive  
Coordinator.....Hannah Viederman  
Artistic Associate.....Misy Singson  
Artistic Fellow.....Nakkia Smalls\*  
Casting Intern.....Tyandria Jaaber  
Current Commissioned  
Writers.....Daniel “Koa” Beaty,  
The Bengsons, Lee Cataluna,  
Jeremy Cohen, Noah Diaz,  
Lady Dane Figueroa Edidi, Emily Feldman,  
Idris Goodwin, Caleen Sinnette Jennings,  
Deepak Kumar, The Pack, Octavio Solis,  
Vera Starbard, Cheryl West, Whitney White,  
Lauren Yee, Karen Zacarias, Zack Zadek

## BUILDING OPERATIONS

Director of Facilities and  
Operations.....Kean Windear  
Building Technician.....Anthony Wade  
Maintenance Assistant.....Tevin Smith  
Porter.....Lawrence Wise  
Stage Door Attendant.....Kay Rogers  
Environmental and Security Services.....SWBID

## COMMUNITY ENGAGEMENT

Director of Community  
Engagement.....Sean-Maurice Lynch  
Camp Programs Director.....Rebecca Campana  
Community Engagement  
Producer.....Tiffany Fulson  
Learning Engagement  
Manager.....Katie Campbell  
Training Programs Manager.....Zoë Hall  
Learning Engagement  
Coordinator.....Kayla A. Warren  
Learning Engagement Fellow.....Wonnie Kim\*  
Assistant Community Engagement  
Producer.....Kimberly Scott  
Community Partnership Fellow.....T’Niya Wilson\*  
Community Engagement  
Intern.....Jamal Richardson\*\*

## DEVELOPMENT

Interim Chief Development  
Officer.....Betsy O. Anderson  
Director of Development Operations  
and Events.....Maria Corso  
Director of Strategic  
Philanthropy.....R. Wesley Meekins  
Associate Director of Institutional  
Partnerships.....Abigail Cady  
Membership Manager.....Lauren Lopaty  
Gift Planning Specialist.....Maya Weil  
Institutional Partnerships  
Specialist.....Mary Helen Pryal  
Membership Assistant.....Oscar León  
Development Operations and  
Events Assistant.....Mina Sollars  
Development Fellow.....Tiani Thorne\*

## GENERAL MANAGEMENT

General Manager.....Alicia Sells  
Associate General Manager.....J.P. McLaurin  
Interim Company Manager.....Bowen Fox  
General and Production  
Management Coordinator.....Jenna Murphy  
General and Company  
Management Fellow.....Madalyn Oliver\*  
General and Company  
Management Intern.....Toryn Wilson\*\*

## INFORMATION TECHNOLOGY & SYSTEMS ADMINISTRATION

Information Technology  
Consultant.....RenTec Solutions:  
Travis Armbuster (Director),  
Tima Theppakdee (Help Desk Tier II),  
Jime Marquez (Help Desk),  
Jarrett Poole (System Administrator)

## MARKETING & COMMUNICATIONS

Director of Marketing & Communications..... Ashton Beck  
Associate Director of Marketing & Communications.....Ryan Impagliazzo  
Senior Graphic Designer .....Jenny Hwang  
Content and Email Specialist.....Gaby Castro-Rodriguez  
Public Relations Specialist.....Anastasia St. Hilaire  
Graphic Designer .....Kristopher Ingle  
Marketing & Communications Coordinator .....Destiny King  
Marketing & Communications Fellow .....Byron Escobar\*  
Multimedia Design Fellow .....Anita Emokpae\*  
Marketing Intern .....Khalyla Semexant\*\*

## PRODUCTION

Senior Production Manager.....Jeffery C. Bazemore  
Assistant Production Manager.....Rachel Crawford

## STAGE MANAGEMENT

Resident Production Stage Manager .....Christi B. Spann

## SCENIC

Technical Director.....Travis Smith  
Associate Technical Director .....Ryan Lasich  
Scene Shop Supervisor.....Frank Miller  
Stage Supervisor .....Hannah Martin  
Scenic Charge Artist.....Colleen Doty  
Scenic Artist.....Misha Rodriguez  
Carpenters.....Erick Boscana, Matthew Grisdel, Julia Junghans, Max Marshall, Logan McDowell, Lily Rehberg

## PROPERTIES

Properties Director .....Jennifer Sheetz  
Associate Properties Director .....Jonathan Borgia  
Head Props Artisan .....Niell DuVal  
Props Artisan.....Kyle Handziak  
Props Assistants.....Erica Feidelseit, Kayla Prough

## LIGHTS

Lighting Supervisor .....Paul Villalovoz  
Electricians.....Scott Folsom, Kelsey Swanson, Nicole Trantum  
Lighting Fellow .....Emily Pan\*

## SOUND

Sound and Video Supervisor.....GW Rodriguez  
Associate Sound and Video Supervisor.....Di Carey  
Sound Technicians.....Alex Cloud, Kirubell Seyoum

## COSTUMES

Costume Director.....Joseph P. Salasovich  
Associate Costume Director .....Cierra Coan  
Drapers.....Seth Gilbert, Michele Macadaeg  
First Hands.....Elizabeth Spilsbury, Lilliana Valentin  
Craftsperson.....Deborah Nash  
Wardrobe Supervisor.....Alice Hawfield  
Wigs, Hair, and Makeup Supervisor.....Jaime Bagley  
Dressers.....Caitlin O'Brien, Sabrina Simmons  
Costumes Fellow.....Grace Guzman\*

## SALES & AUDIENCE SERVICES

### SALES OFFICE

Director of Sales Services.....Caroline Hunt  
Sales Operations Specialist & Executive Assistant .....Sabrina Zillinger  
Ticketing Systems & Tessitura Manager.....Aaron Hutchens  
Manager of Sales Services.....Hannah Damanka  
Assistant Managers of Sales Services .....Keshawn Connor, Ellie Pline  
Sales & Audience Services Associates.....Sydné Marie Chesson, Jordan Leah Embrack, Colin O'Bryan, Paul Pelletier Jr., Lara Rogers Benchoam

### GROUP SALES

Lead Manager of Group Sales.....Donald Jolly

### AUDIENCE SERVICES

Director of Audience Services .....Andrew Rampy  
House Managers .....Vicky Kobelka, Bruce Perry, Zachary Radhuber  
Additional Staff for this Production .....Stephanie Atkinson, Alex Butler, Grant Collins, Tristin Evans, Bria Hall, Dalton Lamberth, Hayley McGuirl, Frances Pepper

### EVENTS & RENTALS

Events & Rentals Coordinator .....Jasmine Martin  
Event Consultant .....Kaitlyn Sakry

### MERCHANDISING, FOOD, & BEVERAGE

Associate Director of Merchandising & Guest Experience.....Jody Barasch  
Lead Bartenders.....Edwin Cortez, Imani Pugh, Erika Wallace  
Bartenders.....Mary Ann Anderson-Garlic, Megan Neftali, Kaitlyn Sakry, Brad Teague

\* 2025/26 Class of the Allen Lee Hughes Fellowship Program

\*\* Howard University Creative Arts Administrators Intern





# When life doesn't stick to the script, **we're here for you.**

From our connected urgent care network and on-demand 24/7 telehealth to lifesaving specialty care, we're here when and where you need us.

Behind every visit at MedStar Health is a team of top-rated providers, who together make up one of the region's most respected health systems.

**It's how we treat every patient...with the best of our hearts,  
and the best of our minds.**

**It's how we  
treat people.**



MedStar Health