

RODGERS AND HAMMERSTEIN'S

# CAROUSEL



**2016/17 SEASON**

**arena**  
**stage**  
the mead center  
for american theater

# DIVE IN TO THE 2016/17 SEASON

GOLD-STANDARD MUSICAL  
RODGERS AND HAMMERSTEIN'S  
**CAROUSEL**

MUSIC BY **RICHARD RODGERS**  
BOOK AND LYRICS BY **OSCAR HAMMERSTEIN II**  
DIRECTED BY **MOLLY SMITH**  
CHOREOGRAPHED BY **PARKER ESSE**  
MUSIC DIRECTION BY **PAUL SPORTELLI**  
OCTOBER 28 - DECEMBER 24, 2016

LOOKINGGLASS THEATRE COMPANY'S  
**MOBY DICK**

ADAPTED AND DIRECTED BY **DAVID CATLIN**  
FROM THE BOOK BY **HERMAN MELVILLE**  
NOVEMBER 18 - DECEMBER 24, 2016

WORLD-PREMIERE DRAMA

**ROE**

BY **LISA LOOMER**  
DIRECTED BY **BILL RAUCH**  
JANUARY 12 - FEBRUARY 19, 2017

PART OF THE LILLIAN HELLMAN FESTIVAL

**WATCH ON THE RHINE**

BY **LILLIAN HELLMAN**  
DIRECTED BY **JACKIE MAXWELL**  
FEBRUARY 3 - MARCH 5, 2017

WORLD-PREMIERE POLITICAL THRILLER

**INTELLIGENCE**

BY **JACQUELINE E. LAWTON**  
DIRECTED BY **DANIELLA TOPOL**  
FEBRUARY 24 - APRIL 2, 2017

BELOVED AMERICAN CLASSIC

**A RAISIN IN THE SUN**

BY **LORRAINE HANSBERRY**  
DIRECTED BY **TAZEVELL THOMPSON**  
MARCH 31 - APRIL 30, 2017

INSIGHTFUL COMEDY-DRAMA

**SMART PEOPLE**

BY **LYDIA R. DIAMOND**  
DIRECTED BY **SEEMA SUEKO**  
APRIL 14 - MAY 21, 2017

Photo of Anthony Fleming III, Christopher Donahue and Emma Cadd in *Moby Dick* by Liz Lauren.

**SUBSCRIBE TODAY!**  
202-488-3300 | [ARENASTAGE.ORG](http://ARENASTAGE.ORG)

# RODGERS AND HAMMERSTEIN'S CAROUSEL

## TABLE OF CONTENTS

- 4** Artistically Speaking
- 5** From the Executive Director
- 7** Director's Note
- 9** Title Page
- 10** Location / Cast List
- 11** Musicians / For This Production
- 13** Musical Numbers
- 15** Who's Who - Cast
- 25** Who's Who - Creative Team
- 31** Arena Stage Leadership
- 32** Board of Trustees / Next Stage / Theatre Forward
- 33** Full Circle Society
- 34** Thank You - The Annual Fund
- 37** Thank You - Institutional Donors
- 38** Theater Staff

### **ARENA STAGE**

1101 Sixth Street SW  
Washington, DC 20024-2461  
ADMINISTRATION 202-554-9066  
SALES OFFICE 202-488-3300  
TTY 202-484-0247  
[arenastage.org](http://arenastage.org)

© 2016 Arena Stage.  
All editorial and advertising  
material is fully protected and  
must not be reproduced in any  
manner without written permission.

### *Carousel*

Program Book  
Published October 28, 2016.

Cover Photo Illustration by  
Nigel Buchanan.  
Program Book Staff  
Anna Russell,  
Director of Publications  
David Sunshine, Graphic Designer



*Carousel* is a legend. A myth, a fable. It's a story writ large for all to see. *Carousel* asks the question: Do we deserve a chance to redeem ourselves? Is there grace on the other side of life? The glory of this story is that there is — we human beings in all our complicated, messy, human doings — can be forgiven.

After their major success with *Oklahoma!*, Richard Rodgers and Oscar Hammerstein III weren't sure what to write next. The Hungarian play *Liliom* by Ferenc Molnár came to them from Theresa Helburn of the Theatre Guild and initially they rejected it. But when Rodgers thought about adapting it to a sea coast town in Maine, that excited them.

Remember this was created right after World War II, a time of devastation, joy and fear for the whole country and somehow I think this musical was a healing act for those who had lost so many friends and family. The reason why Rodgers and Hammerstein have lasted so long is because their stories are about something meaningful — *South Pacific* attacked racism; *Oklahoma!* tackled the fears and triumphs of forging a new state from a territory; and *Carousel* is about personal redemption and the wrongs we do each other. It is a story with spirituality and morality in the center of it.

I love this story because it's real. Billy and Julie are complex. We don't always understand their motivations even when we root for them. Don't we know many in our own lives we don't completely understand? We all have people in our lives we spend years trying to figure out — and Billy and Julie are two of these people.

I have long been a fan of the gold-standard musical — those musicals that have stood the test of time, Rodgers and Hammerstein are at the top of the skyscraper as far as I'm concerned, with all other musical theater teams falling below. I feel fortunate to be working with some of my favorite collaborators: Parker Esse with his dynamic choreography; Paul Sportelli who has created a new arrangement for 12 expert musicians; and Todd Rosenthal who has given us a mythic Maine seacoast town.

I was inspired by Thornton Wilder's *Our Town* to use mime in the entire show to wake up our imaginations. Somehow it feels right with the mythic nature of the story — and to remind us this isn't reality TV. Longtime collaborator David Leong is our mime and fight expert. The text is juicy because of its origin and Anita Maynard-Losh is our Text Director. Ilona Somogyi and Keith Parham are new to this team and I look forward to sharing their work with you.

And, oh, the actors. Thanks to each of you for pouring your hearts into the creation of this *Carousel* for today. Welcome to you, our audiences — our final collaborators!

Now we'll see the world through your eyes.

Best,

A handwritten signature in dark ink, appearing to read 'Molly'.

Molly Smith, Artistic Director

# FROM THE EXECUTIVE DIRECTOR



Like a state or county fair, or even a traveling carnival, Arena has become a place where members and leaders of every community come together to enjoy theater and to share ideas. This bountiful exchange is fostered by several community partnerships and collaborations that strengthen Arena as an institution by qualifying us as a gathering place for community intervention in Southwest. It goes without saying that the beautiful vision of architect Bing Thom designed a space that lends itself to welcoming the many facets of our D.C. community. With Bing's recent passing, his spirit and creativity will be terribly missed. I'd like to take this time to highlight some of our wonderful community partnerships.

Our relationship with the Southwest Business Improvement District (SWBID) keeps us actively engaged in the changing face of the Southwest community. The SWBID is tracking 39 various development projects including hotels, museums and 1,200 residential units. The SWBID Clean Team brightens the face of our neighborhood. They are an advocate for critical issues that face Southwest as we experience exponential growth.

Arena's collaboration with Martha's Table, "Martha's Table Feeds the Mind," is a means to give children resources to develop a love of language and storytelling. Since last season, the theater accepts donations of gently used books, and also has a selection of age appropriate books for sale at Visitor Services, in the event patrons would like to purchase one to donate onsite. Last year we collected an amazing 2,477 books!

The D.C. Career Fair is an ongoing partnership with the offices of Councilmember Charles Allen and Councilmember Elissa Silverman. Beginning in 2013 as a job fair and now blossomed into a Career Fair, the program is an innovative and collaborative effort to focus on giving job-seekers valuable guidance and connecting them to employers. The lobbies are packed with hiring organizations and professional development facilitators ready to find great employees.

A generous gift from Trustee Andrew Ammerman made a meaningful partnership possible with Georgetown University. Entering its 10th season, this unique partnership involves a sharing of information and resources. Arena Stage artistic staff and visiting professional artists participate in master classes and convenings at Georgetown University, and likewise Georgetown Theater and Performance Studies faculty provide cross-disciplinary expertise related to productions as applicable for post-show discussions and dramaturgical insight for Arena Stage.

Our work in-house and in the community shapes Arena both as an arts organization and as a public institution. Being a welcoming presence in the community makes us a better resident theatre. I'm excited to continue shaping current relationships and embracing new partnerships on the horizon. The doors are open!

All best,

A handwritten signature in dark ink, appearing to read "Edgar". The script is fluid and cursive.

Edgar Dobie, Executive Director



# Arena Stage Remembers Architect, Bing Thom (1940 – 2016)

Photo of Bing Thom by Drew Angerer for The New York Times.



In the late 90s, under the direction of Molly Smith, Arena Stage began to reinvent itself and in 2000, Bing Thom — founder of Bing Thom Architects (BTA) — won the commission to redesign Arena Stage. Considering the rich history of the property, BTA was faced with the challenge of maintaining the original listed historic structures while effectively doubling the size of the overall facilities, improving the acoustics and creating an innovative design that lived up to the strength of the original.

BTA devised an ingenious plan that saved and reused the two original, historic theater buildings, while adding the Arlene and Robert Kogod Cradle. The new complex completely reconsidered the building typology and inverted many of the typical assumptions of theater design. By wrapping all three buildings in a 45-foot-high insulated glass skin and topping them with a heroic cantilevered roof, BTA combined the old and new to create an imaginative and forceful theatrical compound that has become a catalyst for the revitalization of Southwest Washington, D.C.

We will be forever grateful to Bing for his vision and dedication to Arena Stage.



Photo of Bing Thom and Molly Smith by Scott Suchman; Photo of the Mead Center for American Theater by Nic Lehoux.



## IN REMEMBRANCE





Artistic Director Molly Smith is a lover and advocate of the American gold-standard musical. Read more to learn why she was inspired to bring Rodgers and Hammerstein's *Carousel* to Arena Stage audiences.

### WHAT ATTRACTED YOU TO DIRECTING CAROUSEL TODAY?

I've known for years that I wanted to direct *Carousel*, and finally this is the right time to do it. I have a particular affinity for Rodgers and Hammerstein, and this is the *Hamlet* of American musicals. It is complex in all the

best ways. It's redemptive and full of illumination at the same time. So it's a perfect musical to ask ourselves the question: "Do I deserve a second chance? In life or in the afterlife? Are we fated to continue the cycles that we experience within our families?" We see the full circle of life in the play, hitting all the rites of passage: death, birth, weddings, even a graduation. I think *Carousel* is actually a very hopeful story about being a human being in all our messiness.

### HOW DO YOU FIND THE HOPE IN THIS STORY?

I think life is complicated. I think people who tell you that life is easy probably are living in a superficial way or they're living an unexamined life. *Carousel* is thought-provoking. It starts with the wildness of a carnival in the middle of a little town on the edge of Maine where people are in mundane factory jobs. Then they're thrown into this carnival, which is radical and extreme and the town experiences an explosion of joy. Part two is like a Winslow Homer painting: a watery world that takes us to the clambake and the lives of fishermen and sailors and whalers. Then the story moves into an area which is quite dark and tragic: purgatory. I think we live in some version of heaven, earth and purgatory every day. One moment I'm in heaven, and the next I get pulled into purgatory. I'm always operating between these three states of mind, and I think *Carousel* is an uncanny musical because it takes us into all three states of being.

### WHAT IS THE EFFECT OF DIRECTING CAROUSEL IN THE ROUND?

Directing the show in the round causes you to re-think everything because the gold-standard musicals were written decades ago for proscenium stages. Because we are in the round, you're never more than nine rows away from the actor, so intimacy is a powerful tool. Because *Carousel* is really an investigation into the hearts of human beings, I think this is an ideal space for this great musical. In fact, *Carousel* might be the perfect play to be directed in the round, as the architecture of the Fichandler itself extends the metaphor of the carousel representing the circle and cycle of life.

### HAVE YOU EVER BEEN TO A CLAM BAKE?

Oh yeah! But the kind of clam bakes I've been to have been in Alaska. We would dig clams with a shovel at low tide in the moonlight when it was freezing cold and then go home to a fire and make clam chowder and steamers. I'd say *that's* a clam bake, but not quite the New England kind.

### CONTINUE THE CONVERSATION

Join us for a post-show conversation with the artists on:

November 15 at 12:00 p.m.

November 16 at 12:00 p.m.

November 22 at 7:30 p.m.

December 1 at 8:00 p.m.

December 14 at 12:00 p.m.

December 21 at 12:00 p.m.



LEX

WATERFRONT  
STATION

[lexatwaterfrontstation.com](http://lexatwaterfrontstation.com)

[leoatwaterfrontstation.com](http://leoatwaterfrontstation.com)

FRONT ROW LIVING

202.335.6873

Luxury Apartments



LEO

WATERFRONT  
STATION



**BERNSTEIN**  
MANAGEMENT CORPORATION





Arena Stage  
Molly Smith, Artistic Director | Edgar Dobie, Executive Director

PRESENTS

RODGERS AND HAMMERSTEIN'S  
**CAROUSEL**

MUSIC BY  
**RICHARD RODGERS**

BOOK AND LYRICS BY  
**OSCAR HAMMERSTEIN II**

DIRECTED BY  
**MOLLY SMITH**

CHOREOGRAPHY BY  
**PARKER ESSE**

MUSIC DIRECTION BY  
**PAUL SPORTELLI**

Based on Ferenc Molnar's Play "Lilliom" as adapted by Benjamin F. Glazer  
**Original Dances by Agnes De Mille**

Original Broadway Orchestrations by Don Walker  
Adapted for this production by Paul Sportelli

SET DESIGNER  
**TODD ROSENTHAL**

COSTUME DESIGNER  
**ILONA SOMOGYI**

LIGHTING DESIGNER  
**KEITH PARHAM**

SOUND DESIGNER  
**JOSHUA HORVATH AND  
RAY NARDELLI**

WIG DESIGNER  
**ANNE NESMITH**

FIGHT CHOREOGRAPHY AND MIME  
**DAVID LEONG**

ASSOCIATE MUSICAL DIRECTOR  
**WILLIAM YANESH**

ASSISTANT CHOREOGRAPHER  
**TONY NEIDENBACH**

DIALECT COACH  
**LYNN WATSON**

ASSOCIATE AND TEXT DIRECTOR  
**ANITA MAYNARD-LOSH**

CASTING DIRECTOR  
**AMELIA ACOSTA POWELL, C.S.A.**

NEW YORK CASTING  
**GEOFF JOSSELSO, C.S.A.**

STAGE MANAGER  
**SUSAN R. WHITE\***

REPLACEMENT STAGE MANAGER  
**KURT HALL\***

ASSISTANT STAGE MANAGER  
**TREVOR A. RILEY\***

Rodgers and Hammerstein's *Carousel* is generously sponsored by  
Hank Schlosberg in memory of his wife, Charlotte; George and Duffy Ftikas;



Choreography is sponsored by Virginia McGhee Friend.

Anonymous support is also provided for Rodgers and Hammerstein's *Carousel*.  
*Carousel* is presented through special arrangement with R&H Theatricals: [www.rnh.com](http://www.rnh.com)

LOCATION

Coastal Maine

CAST (in order of appearance)

Carrie Pipperidge.....	KATE ROCKWELL*
Julie Jordan .....	BETSY MORGAN*
Mrs. Mullin .....	E. FAYE BUTLER*
Billy Bigelow / Fight Captain .....	NICHOLAS RODRIGUEZ*
David Bascombe / Ensemble.....	THOMAS ADRIAN SIMPSON*
Nettie Fowler.....	ANN ARVIA*
Enoch Snow / Ensemble .....	KURT BOEHM*
Jigger Craigin / Ensemble.....	KYLE SCHLIEFER*
Captain / Ensemble.....	STEPHAWN STEPHENS*
Heavenly Friend / Ensemble .....	NICOLE WILDY
Starkeeper / Ensemble.....	JOSHUA OTTEN
Louise Bigelow / Ensemble.....	SKYE MATTOX*
Carnival Boy / Ensemble.....	MICHAEL GRACEFFA*
Enoch Snow, Jr. / Ensemble .....	JACOB BEASLEY*
Mrs. Bascombe / Ensemble.....	RAYANNE GONZALES*
Ensemble / Dance Captain .....	TONY NEIDENBACH*
Ensemble .....	GRACIE JONES*
Ensemble .....	DANIELLE SUE JORDAN*
Ensemble .....	ETHAN KASNETT*
Ensemble .....	EMMA SOPHIE MOORE
Ensemble .....	BRIDGET RILEY*
Ensemble .....	PAUL SCANLAN*
Ensemble .....	JESSICA WU*
Ensemble .....	PHIL YOUNG
Female Swing .....	KATIE ARTHUR
Male Swing.....	JAY WESTIN*
Heavenly Friend and Starkeeper Understudy.....	ISABELLA BRODY

\*Member of Actors' Equity Association

UNDERSTUDIES

Rayanne Gonzales (*Nettie Fowler*), Gracie Jones (*Julie Jordan*), Danielle Sue Jordan (*Carrie Pipperidge*), Ethan Kasnett (*Jigger Craigin*), Tony Neidenbach (*Carnival Boy*), Bridget Riley (*Mrs. Mullin*), Paul Scanlan (*Billy Bigelow*), Stephawn Stephens (*David Bascombe*), Jessica Wu (*Louise*), Phil Young (*Enoch Snow*)

Rodgers and Hammerstein's *Carousel* runs with one intermission.  
The video and/or audio recording of this performance by any means whatsoever is strictly prohibited.  
Please turn off all electronic devices.

MUSICIANS

Musical Director / Conductor.....	PAUL SPORTELLI
Keyboard / Associate Musical Director.....	WILLIAM YANESH
Flute / Piccolo.....	GEORGE HUMMEL
Clarinet / Bass Clarinet / Music Contractor.....	RITA EGGERT
Oboe / English Horn.....	ELAINE BAUGHMAN
French Horn.....	JUSTIN DREW
Trumpet.....	BRENT MADSEN
Violin.....	BRUNO NASTA
Viola.....	JENNIFER RIES
Cello.....	DEBORAH M. BRUDVIG
Harp.....	ERIC SABATINO
Bass.....	DAN HALL
Drums / Percussion.....	DANNY VILLANUEVA

FOR THIS PRODUCTION

Technical Director.....	SCOTT SCHRECK
Properties Director.....	MONIQUE WALKER
Costume Director.....	JOSEPH P. SALASOVICH
Master Electrician.....	CHRISTOPHER V. LEWTON
Sound Director.....	TIMOTHY M. THOMPSON
Directing Fellow.....	MIRANDA HAYMON
Production Assistant.....	ELLE BOLIN
Stage Management Fellow.....	NI EW BHARYAGUNTRA
Youth Company Supervisor.....	JENNA MURPHY
Assistant to the Choreographer.....	RACHEL LEIGH DOLAN
Automation Technician.....	MICK COUGHLAN
Deck Carpenter.....	KELSEY SWANSON
Props.....	MARION HAMPTON DUBÉ
Wardrobe Supervisor.....	ALICE HAWFIELD
Wardrobe.....	ANDREW CUTLER, GERRI FORD, CARISSA GILSON, ADELLE GRESOCK
Wigs, Hair and Make-Up Supervisor.....	LASHAWN MELTON
Wigs, Hair and Make-Up.....	ADELLE GRESOCK, KELLY ANNE JOHNS
Costume Design Assistant.....	KITT CRESCENZO
Assitant to the Costume Designer.....	FABIAN FIDEL AGUILAR
Additional Costumes and Tailoring by.....	ALL-STITCH, DAWSON TAILORS, CARMEL DUNDON, KROSTYNE STUDIOS, PAUL CHANG CUSTOM TAILOR
Overhire Drapers.....	DENISE AITCHISON, LAUREL DUNAYER, SETH GILBERT, JUDIANNE WALLACE
Overhire Stitchers.....	NATALIE R. FLANGO, CARISSA GILSON, KELLY MARSHALL HOWLAND, NATALIE KURCZEWSKI, MICHELE MACADAEG, STELLA PIVNIK, RAYNA C. RICHARDSON, SANDRA SMOKER-DURAES, RE TEAGUE, RANDI YOUNG
Overhire Costume Crafts.....	SYDNEY GALLAS, ADELLE GRESOCK, CSILLA SOMOGYI
Knitting by.....	KOZY KITTEN KUSTOM KNITTERY
Dance Shoes by.....	LADUCA, WORLD TONE DANCE
Light Board Operator.....	PAUL VILLALOVOZ
Sound Engineer.....	LORRAINE RHODEN
Assistant to the Lighting Designer.....	TYLER D. DUBUC
Second Audio.....	MOLLIE WELLBORN
Keyboard Programming.....	JOSE SIMBULAN, WAYNE GWILLIM
Organ Sample Library.....	SONOKINETIC
Rehearsal Accompanist.....	JACOB KIDDER
Board Interns.....	DEBBIE DRIESMAN, BETH NEWBURGER SCHWARTZ, TERRY R. PEEL



# FIND THE ARTIST IN YOU

Multi-Day Arts Camp for Young Artists | Ages 8-15

OVER 75 ACTIVITIES TO CHOOSE FROM TO FILL YOUR CAMP DAY



**FOUR-WEEK INTENSIVE**

June 26 - July 21, 2017

**TWO-WEEK SESSION**

July 24 - August 4, 2017



**ARENASTAGE.ORG/CAMP | 202-600-4064**

## MUSICAL THEATER TRAINING COMPANY

Train with us at The Academy | Ages 14-18



Emma Sophie Moore (*Carousel*) got her start with us – and you can too!

**July 24 — August 4, 2017**

Get expert one-on-one attention from some of the nation's best musical theater professionals.

**SIGN UP TODAY! 202-600-4064**

**WWW.ARENASTAGE.ORG/ACADEMY**



the mead center  
for american theater



ACT I

Prologue (The Carousel Waltz)..... THE COMPANY

Mister Snow .....CARRIE AND JULIE

If I Loved You.....BILLY AND JULIE

June is Bustin’ Out All Over.....NETTIE, CARRIE AND THE CHORUS

Encore: June is Bustin’ Out All Over .....NETTIE AND THE CHORUS

Reprise: Mister Snow..... CARRIE, ENOCH AND THE GIRLS

When the Children are Asleep..... ENOCH AND CARRIE

Blow High, Blow Low .....JIGGER, BILLY AND THE MEN

Soliloquy..... BILLY

Finale Act I ..... NETTIE AND THE COMPANY

ACT II

A Real Nice Clambake.....NETTIE, JULIE, CARRIE, ENOCH AND THE CHORUS

Geraniums in the Winder .....ENOCH

Stonecutters Cut It on Stone .....JIGGER AND THE CHORUS

What’s the Use of Wond’rin..... JULIE AND THE GIRLS

You’ll Never Walk Alone..... JULIE AND NETTIE

The Highest Judge of All..... BILLY

Ballet..... LOUISE, CARNIVAL BOY, ENOCH,  
THE SNOW CHILDREN AND THE DANCERS

Reprise: If I Loved You ..... BILLY

Finale Ultimo..... THE COMPANY

THE KENNEDY CENTER

New York's Surprise Hit of the Season  
"TRULY ENCHANTING."

—The New York Times

The Acclaimed Fiasco Theater Production

James & Stephen  
Lapine & Sondheim's

# into the woods

Dec. 6–Jan. 8 | Eisenhower Theater

TICKETS ON SALE NOW!

(202) 467-4600 | [KENNEDY-CENTER.ORG](http://KENNEDY-CENTER.ORG)

Tickets also available at the Box Office. Groups (202) 416-8400

For all other ticket-related customer service inquiries, call the Advance Sales Box Office at (202) 416-8540

Theater at the Kennedy Center  
is made possible by

Adrienne Arsht

Major support for Musical Theater  
at the Kennedy Center is provided by



Kennedy Center Theater  
Season Sponsor



## CAST



**KATIE ARTHUR** (*Female Swing*) makes her Arena Stage debut. She recently worked as a resident actress with Charleston Stage where she starred as Audrey in *Little Shop of Horrors* and played featured

roles in *Mary Poppins* and *The Producers*. Katie is a recent grad from James Madison University where she earned a degree in theater and dance, with a concentration in musical theater. She thanks her loved ones for all their support. Go Dukes! Instagram: @katiearthur28. [www.katiearthur.net](http://www.katiearthur.net)



**ANN ARVIA** (*Nettie Fowler*) was last seen at Arena Stage as Golde in *Fiddler on the Roof*. Washington audiences also saw her in *Les Misérables* (National Theatre). On Broadway, she played the iconic Bird Woman in

*Mary Poppins*, Madame Thenardier in *Les Misérables* and appeared in *Beauty and the Beast*. Off-Broadway saw her in the New York premiere of *Time and Again* (Manhattan Theatre Club). She also toured extensively in both *Les Misérables* and *Ragtime*. Regional credits include Meg in *Damn Yankees* and Marie in *The Most Happy Fella* (Goodspeed) and Mrs. Paroo in *The Music Man* (Cape Playhouse). Ann will kick off 2017 with the Off-Broadway premiere of the new Kander/Pierce musical *Kid Victory*. [www.annarvia.net](http://www.annarvia.net)



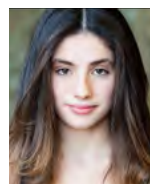
**JACOB BEASLEY** (*Enoch Snow, Jr. / Ensemble*) makes his Arena Stage debut. D.C. credits include Jet/Shark swing for *West Side Story* (Helen Hayes nomination, Signature Theatre). Additional credits include *Peter*

and the *Starcatcher*, *The Little Mermaid*, *The Secret Garden*, *Sister Act*, *Mary Poppins*, *Les Misérables* and *Tarzan* (Alluvion Stage Company). He received a B.A. in theater arts performance from Liberty University in the spring of 2015.



**KURT BOEHM** (*Enoch Snow / Ensemble*) most recently appeared in *Born for This* at Alliance Theatre and Arena Stage. Previous Arena credits include *Fiddler on the Roof*, *My Fair Lady*, *Oklahoma!* and *She*

*Loves Me*. Additional D.C. credits include *West Side Story*, *Cabaret*, *Les Misérables* and *Kiss of the Spider Woman* (Signature Theatre); *A Chorus Line*, *Godspell*, *How to Succeed in Business Without Really Trying* and *The Producers* (Olney Theatre Center); *Little Shop of Horrors* (Ford's Theatre); *The Full Monty* (Keegan Theatre); *The Last Five Years* (Red Branch Theatre); and *The Phantom Tollbooth* and *Latino Inaugural Gala* honoring Chita Rivera and Rita Moreno (Kennedy Center). He holds a B.M. from Catholic University. Kurt sends his love and gratitude to Molly, Parker and Paul for this opportunity.



**ISABELLA BRODY** (*Heavenly Friend and Starkeeper Understudy*) is excited to make her Arena Stage debut. D.C.-area credits include Mary Lennox in *The Secret Garden* (NextStop Theatre), Nermal in the world

premiere of *Garfield the Musical* (Adventure Theatre MTC), Hilary u/s in the east coast premiere of *Moment* (Studio Theatre) and Little Cee Cee in *Beaches* (workshop, Signature Theatre). She is an eighth-grader at Norwood School in Maryland, has trained with the pre-professional theater company at Adventure Theatre MTC and sings in her school choir. She has performed in company, school and camp productions since age six. She trains in ballet, jazz, tap and modern dance, plays field hockey and is an advanced downhill skier. Love and big hugs to her mom and dad, family, friends and teachers for their support and inspiration.



**E. FAYE BUTLER** (*Mrs. Mullin*)'s Arena Stage credits include *King Hedley II*, *Smokey Joe's Café*, *Pullman Porter Blues*, *Trouble in Mind*, *Oklahoma!*, *Crowns*, *Ain't Misbehavin'*, *Polk County* and *Dinah Was*. Recent

credits include *Follies* (St. Louis Repertory) and *Ghost* (Fulton Theatre/Main State Music Theatre). Additional credits with the Kennedy Center, Paramount, Victory Gardens, Goodman Theatre, Signature Theatre, Center Stage, La Jolla, Court Theatre, Steppenwolf, Chicago Shakespeare Theater, Marriott, Dallas Theater Center, Northlight, Philadelphia Theatre Company, Yale Repertory and Pasadena Playhouse. She received the 2016 Guy Adkins Award and 2016 Rosetta LeNoir Award and was a 2012 Lunt-Fontanne Fellow. Additional awards include Jeff, Black Theater Alliance, Helen Hayes, After Dark, John Barrymore,



# New to Southwest DC



## Masala ART

INDIAN RESTAURANT

Enjoy a half price bottle of wine  
with Masala Art's 3-course  
prix fixe dinner before the show

or

Save 10% on the 3-course  
post-show dinner

when you present your ticket for that evening's performance

Prix fixe dinner price \$35 per person. Not Valid on dinner ordered off the regular a la carte menu.



1101 4th Street SW • Washington, DC 20024 • 202-554-1101  
[WWW.MASALAARTDC.COM](http://WWW.MASALAARTDC.COM)



RAMI, Excellence in the Arts, Ovation, Sarah Siddons Society Leading Lady, Kathryn V. Lamkey and Black Excellence Awards.



## RAYANNE GONZALES

(Mrs. Bascombe / Ensemble) returns to Arena Stage following her appearances in *Oliver!*, *Destiny of Desire*, *Mother Courage and Her Children*, *My Fair Lady*, *The Music Man*, *Damn*

*Yankees* and *Señor Discretion Himself*. She was also recently in *Anastasia* at Hartford Stage and *Man of La Mancha* at Shakespeare Theatre Company. Broadway credits include *The Phantom of the Opera* and *Hands on a Hardbody*. Additional credits include *South Pacific* (North Carolina Theatre and Casa Mañana), *Porgy & Bess* (Natchez Festival), the first national tour of *In the Heights* and NBC's *The Sound of Music Live!* An alumna of Boston University, Longy School of Music and The Banff Centre. Thanks to my family and Goddard/CGF Talent. For Paloma, almost 9 and ready to shine! In memory of Vincent.



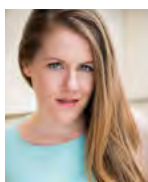
**MICHAEL GRACEFFA** (*Carnival Boy / Ensemble*) makes his Arena Stage debut. After performing in Signature Theatre's *West Side Story* last winter, he is excited to be back in the D.C. area. Recently, Michael has been

touring the country as Rudolph in the first national Broadway tour of *Matilda*. Other career highlights include the first national tour of *Catch Me If You Can*, *Chicago* (North Shore Music Theatre) and *Man of La Mancha* (Pittsburgh CLO). He is a 2016 New York Musical Festival (NYMF) Award winner (individual performance) for the premiere of *The Last Word*. Proud Vassar Alum '14. Love to mom and dad.



**GRACIE JONES** (*Ensemble*)'s was last seen at Arena Stage in *Born for This*. D.C. credits include Betty Thorpe/Cynthia in *Code Name: Cynthia* (Pallas Theatre Collective); *Carousel*, *The Little Mermaid*, *Thea in Spring*

*Awakening*, *Cinderella* and *The Sound of Music* (Olney Theatre Center); Teen CeCe Bloom in *Beaches* and *The Threepenny Opera* (Signature Theatre); and Dorothy in *The Wizard of Oz* and *Hope in Anything Goes* (Toby's Dinner Theatre). She received her B.A. in theater from the University of Maryland, College Park. [www.grcjones89.wix.com/graciejones](http://www.grcjones89.wix.com/graciejones)



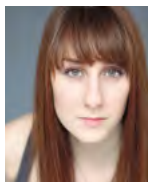
**DANIELLE SUE JORDAN** (*Ensemble*) returns to Arena Stage after performing in the last two months of *The Music Man*. On Broadway, she was seen in the Kennedy Center's production of *Follies*, starring Bernadette

Peters. Most recently she completed the two-year Broadway tour of *Rodgers & Hammerstein's Cinderella*. Other tours include the first national of Meredith Willson's *The Music Man*. Regionally she has performed at theaters including Paper Mill Playhouse, Ahmanson Theatre, Denver Center, Pioneer Theatre and Cape Playhouse. Always wanting to help others in the industry, she created the website [www.gypsyslist.com](http://www.gypsyslist.com), filled with many resources and articles for the new performing artist. Danielle thanks her family and friends for their constant support. [www.daniellesuejordan.com](http://www.daniellesuejordan.com)



**ETHAN KASNETT** (*Ensemble*) is thrilled to make his Arena Stage debut. D.C.-area credits include Chantel in *La Cage aux Folles* (Signature Theatre) and *Guys and Dolls*, *The Producers* and Disney's *The Little Mermaid*

(Olney Theatre Center). Regional credits include Bobby in *A Chorus Line*, *The Music Man*, *The Drowsy Chaperone*, *Pirates of Penzance* (dir. Terrence Mann), *Man of La Mancha*, *My Fair Lady* (choreo. Charlotte d'Amboise) and *Guys and Dolls* (Connecticut Repertory Theatre). Film/tv credits include PBS' *The White House Celebrates the Music of Broadway*. He received his B.F.A. in musical theater from the University of Miami. For Mom and Dad. Instagram: @ethankasnett.



**SKYE MATTOX** (*Louise Bigelow / Ensemble*) is thrilled to make her Arena Stage debut. She began her career when she moved to NYC at age 17. Her Broadway credits include *West Side Story* and *On the Town*,

where she understudied the lead role of Ivy Smith. Other New York credits include *American Dance Machine* and numerous shows for New York City Center's Encores! series, including *Little Me* and *Do I Hear a Waltz?* She can also be seen on the second season of NBC's hit TV series *Smash* as a recurring cast member. In addition to performing, Skye is also passionate about teaching. She has been on the faculty for Broadway Dreams





A MODERN AMERICAN CUISINE RESTAURANT SERVING SW DC

# DINNER & SHOW

**\$35 THREE-COURSE DINNER**

Start your evening with an appetizer & entrée, walk over to see the show, then come back to enjoy dessert.



**SAVE 10% WITH YOUR ARENA STAGE TICKET!**

Not valid with any other specials, offers or promotions.

1101 4TH ST, SW WASHINGTON, DC 20024 202.488.0987

FOR MORE DETAILS, PLEASE VISIT [WWW.STATION4DC.COM](http://WWW.STATION4DC.COM)

Foundation and does guest teaching for various performing arts studios and schools. Instagram: @skye\_mattox.



**EMMA SOPHIE MOORE** (*Ensemble*) returns to Arena Stage after understudying several roles in last season's *Akeelah and the Bee*. Additional D.C. credits include *Big, The Musical* and *A Little House Christmas*

(Adventure Theatre) and Colin in *The Secret Garden*, Dream Maria in *West Side Story* and Theo in *Pippin* (Theatre Lab). She performed as Alice in *Alice in Wonderland* (Disney Junior DVD series). Additional credits include Niki Harris in *Curtains*, Cinderella in *Into the Woods*, Connie in *A Chorus Line* and Mayzie in *Seussical*. As a dancer and violinist, Emma Sophie has performed in ballets and solo violin recitals at the Kennedy Center, National Gallery of Art, Warner Theatre and Carnegie Hall. She recently starred in the short film *Tunnel Vision* and performed the original score. Emma Sophie is a proud alumna of both Camp Arena Stage and the Arena Stage Academy's Musical Theater Training Company.



**BETSY MORGAN** (*Julie Jordan*) originated the roles of Tricia Nixon and Susan Ford in Michael John LaChiusa's *First Daughter Suite* at The Public this past year and can be heard on the original cast recording. Also

with LaChiusa, she originated the roles of Louisa in *Rain* and Leslie in *Giant*. She was a member of the original Broadway companies of *The King and I* (2015 revival), *Les Misérables* (2014 revival), *A Little Night Music* (2009 revival), *The Little Mermaid* and *High Fidelity* and the Off-Broadway companies of *Found* (Atlantic Theater Company), *The Fantasticks* (2006 revival) and *Bernarda Alba* (Lincoln Center). Betsy recreated the role of Fantine in the 25th anniversary tour of *Les Misérables*. She was seen on TV in *Flight of the Conchords*.



**TONY NEIDENBACH** (*Ensemble / Dance Captain*) served as assistant choreographer for Arena Stage's *Oliver!* From Gainesville, Georgia, he is a New York-based performer. Regional credits include *West*

*Side Story* (Signature Theatre), Theatre Under the Stars, The Muny, Northern Stage, Pioneer Theatre Company, Virginia Stage Company,

Seaside Music Theater, Finger Lakes Musical Theatre Festival and Jacob's Pillow. He toured nationally with Roundabout Theatre Company's production of *Anything Goes*. New York credits include Off-Broadway, the Metropolitan Opera, 65th and 70th Annual Tony Awards, New York City Center's *Fall for Dance Festival* and the HBO web series *High Maintenance*. He is a member of the critically acclaimed Liz Gerring Dance Company. Huge thanks to Molly, Parker, MSA and the fam.



**JOSHUA OTTEN** (*Starkeeper / Ensemble*) is delighted to make his Arena Stage debut. In 2014, he performed as Peter Cratchit in *A Christmas Carol* (Ford's Theatre). He was chosen by

Maestro Loren Maazel as boy soprano soloist for the 2014 Castleton Festival. His stage credits include understudying the role of Colin Craven in *The Secret Garden* (Center Stage) and playing Gavroche in *Les Misérables*, Kurt in *The Sound of Music*, JoJo in *Seussical, Jr.* and Charlie in *Willy Wonka, Jr.* (Riverside Center in Fredericksburg, Virginia). Screen credits include Nathaniel in the independent film *Kidney Beans* as well as appearances on History Channel's *The Men Who Built America* and AMC's *Turn*. Joshua is represented by Linda Townsend Management, Inc.



**BRIDGET RILEY** (*Ensemble*) makes her Arena Stage Debut. She was seen Off-Broadway in *Freckleface Strawberry* and *The Scarlet Letter*. D.C.-area credits include *110 in the Shade* (Ford's Theatre). National tour credits

include *West Side Story* and *Seussical*, international credits include *Nine*. Regional credits include *West Side Story*, *The Producers*, *Les Misérables*, *All Shook Up*, *Spelling Bee*, *Bare*, *Cabaret* and *Into the Woods*, among others. Film/TV credits include *Nurse Jackie*, *Something Borrowed* and *East of Eden*. Concerts at Ted Shawn/Jacob's Pillow and at Carnegie Hall. Bridget received a BFA at Pace University and trained with Jacob's Pillow School for Dance. Bloc Talent Agency. Thank you to the amazing Arena staff and the *Carousel* artistic team. Much love to Mom, Dad, Tom, Erin, Maeve and Greg. Instagram: @missbridgetriley  
www.bridgetrileyonline.com



**THE  
KENNEDY  
CENTER**

WASHINGTON  
NATIONAL **OPERA**

Francesca Zambello,  
Artistic Director

Giacomo Puccini/  
Luigi Illica and Giuseppe Giacosa

# ***Madame Butterfly***

**May 6–21  
Opera House**

**She made the  
ultimate sacrifice  
for love.**



PHOTO BY CORY WEAVER

**TICKETS ON SALE NOW! (202) 467-4600 | KENNEDY-CENTER.ORG**

**Tickets also available at the Box Office. Groups (202) 416-8400**

**For all other ticket-related customer service inquiries, call the Advance Sales Box Office at (202) 416-8540.**

*Major support for WNO is provided by Jacqueline Badger Mars.*

**David and Alice Rubenstein** are the Presenting Underwriters of WNO.

*WNO acknowledges the longstanding generosity of  
Life Chairman Mrs. Eugene B. Casey.*

*Generous support for WNO Italian Opera is provided by  
Daniel and Gayle D'Aniello.*

*Madame Butterfly is a production of the Clarice Smith Opera Series.*

*WNO's Presenting Sponsor*

**GENERAL DYNAMICS**





**KATE ROCKWELL** (*Carrie Pipperidge*) makes her Arena Stage debut. Broadway credits include *Skylar* in *Bring It On: The Musical* (original broadcast cast), Margot in *Legally Blonde*, Sherrie in *Rock of Ages* and *Hair*. She has travelled the country in three first national tours and performed regionally at The Muny, La Jolla Playhouse, Alliance Theatre, North Shore Music Theatre and others. Spot her on camera in *Deadbeat* and *Sex and the City* (film). Her solo show, *Back to My Roots*, debuted in New York in 2015. Represented by KMR and proud AEA member. Follow her on Twitter and Instagram: @KateRockwellNYC.



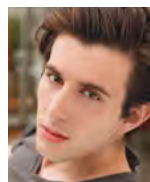
**NICHOLAS RODRIGUEZ** (*Billy Bigelow / Fight Captain*)'s Arena Stage credits include *Destiny of Desire*, *Oklahoma!* (Helen Hayes Award), *Mother Courage and Her Children*, *My Fair Lady* (Helen Hayes nomination), *The Light in the Piazza* and *The Power of Two*. Broadway's *Tarzan*, Off-Broadway's *The Toxic Avenger*, *Almost Heaven*, *Death for Five Voices*, *Bajour*, *Colette Collage*, *Guys and Dolls* (Carnegie Hall) and *I Am Harvey Milk* (Lincoln Center). Additionally, *Jesus Christ Superstar*, *Evita* and *Hair* (national tours), *The Ten Commandments*, *Mothers and Sons*, *Les Misérables* (B. Iden Payne Award), *Love! Valour! Compassion!*, *Master Class*, *Beauty and the Beast*, *Tarzan*, *Wizard of Oz*, *Buddy Holly Story*, *Damn Yankees*, *Cinderella*, *South Pacific* and *The King and I*. Screen credits: *Sex and the City 2*, *Madam Secretary* and *One Life to Live* (GLAAD Award). His debut album "The First Time..." is available on iTunes. [www.thenickrod.com](http://www.thenickrod.com)



**PAUL SCANLAN** (*Ensemble*) is thrilled to make his Arena Stage debut. D.C.-area credits include *La Cage aux Folles*, *Simply Sondheim*, *Elmer Gantry*, *Sunday in the Park with George*, *The Threepenny Opera*, *Company*, *The Best Little Whorehouse in Texas* and *Really Really* (Signature Theatre); *The Laramie Project* (Ford's Theatre); *Orphie and the Book of Heroes* (Kennedy Center); *The Rocky Horror Show* (Studio Theatre); *Hair*, Emcee in *Cabaret* (Helen Hayes nomination), Moritz in *Spring Awakening* (Helen Hayes nomination, Keegan Theatre); *Lost in the Stars* (Washington National Opera),

*Fahrenheit 451* (Round House); *By Jeeves* (1st Stage); and *Who's Your Baghdaddy?* (Capital Fringe Festival). Regional credits include *My Fair Lady* (The Muny). He received his B.M. from CUA.

Twitter/Instagram: @PaulRScanlan.  
[www.paul-scanlan.com](http://www.paul-scanlan.com)



**KYLE SCHLIEFER** (*Jigger Craig / Ensemble*)'s Arena Stage credits include *Oliver!* (Noah Claypole), *Fiddler on the Roof* (Sasha) and *A House of Glass* (Kip Kiernan). D.C. credits include *A Chorus Line* (Olney Theatre Center,

Helen Hayes nomination), *Lost in Yonkers* (Theater J), *The Member of the Wedding* (Ford's Theatre), *Arcadia* (Folger Theatre) and *Lord of the Flies* (Round House). New York credits include Off Broadway's *Songs for a New World*, *The 8th Fold* (Fringe NYC), *Sing to Me Through Open Windows* (Alchemical Theatre) and *Always the Young Strangers* (Actors Fund). Film/TV credits include Trident Gum's "Anthem" national commercial, CBS's *The Good Wife*, ID Discovery Channel's *Who the (B)LEEP Did I Marry* and Showtime's *The Affair*. Kyle was featured on Masterclass.com with Kevin Spacey and is a graduate of Marymount Manhattan College. [www.kyleschliefer.com](http://www.kyleschliefer.com)



**THOMAS ADRIAN SIMPSON** (*David Bascombe / Ensemble*)'s Arena Stage credits include *Oliver!*, *Fiddler on the Roof*, *Mary T. & Lizzy K.*, *My Fair Lady* and *The Light in the Piazza*, among

credits include *The Threepenny Opera* and *Company* (Signature Theatre); *Orphie and the Book of Heroes* (Kennedy Center), *1776* and *Liberty Smith* (Ford's Theatre) and *Candide* and *The Boys from Syracuse* (Shakespeare Theatre Company). Regional credits include *Candide* (Goodman), *Quixote* in *Man of La Mancha* (Wayside Theatre), *9 to 5* with Sally Struthers and *Les Misérables* (Riverside Center) and *Outside Mullingar* (New Mexico's Fusion Theatre). Tom is a graduate of the U.N.C. School of the Arts.



**STEPHAWN STEPHENS** (*Captain / Ensemble*) returns to Arena Stage for the run of *Carousel*, where he was last seen in *Smokey Joe's Café*. Most recent performances include *110 in the Shade* (Ford's Theatre), *Bessie's*



# THE AMERICAN POPS ORCHESTRA

LUKE S. FRAZIER, MUSIC DIRECTOR  
2016-2017 SEASON

## I'LL BE SEEING YOU: A World War II Love Story

featuring:

CLAYBOURNE  
ELDER

RACHEL  
ESKENAZI-GOLD

FLORENCE  
LACEY

RON  
RAINES

NOV 11,  
2016  
8:00PM

.....

## DON'T RAIN ON MY PARADE: 75 YEARS of Streisand

featuring:

AMBER  
IMAN

LINDSAY  
MENDEZ

LAURA  
OSNES

FRIENDS  
FROM BROADWAY  
& TELEVISION

JAN 13,  
2017  
8:00 PM

.....

## CINDERELLA: A Magical, Musical Tale

featuring:

AUSTIN  
COLBY

MARYJOANNA  
GRISSE

HILARY  
MORROW

DALE  
SAMPSON

MARCH 11,  
2017  
2:00 PM

.....

## YOU SPIN ME 'ROUND: An 80's Dance Party

featuring:

WARREN  
FREEMAN

BAYLA  
WHITTEN

and DJ  
SHEA VAN HORN

APRIL 7,  
2017  
9:00 PM

.....

Save with code: **ArenaSave**

All shows at:

**GW UNIVERSITY LISNER AUDITORIUM**

Tickets @ [www.gwutickets.com](http://www.gwutickets.com) or call 202-994-6800

*Blues* (Metro Stage), *Dreamgirls* (Signature Theatre) and *Little Shop of Horrors* as the voice of Audrey II (Olney Theatre Center). He made his D.C. directorial debut with Theater Alliance's holiday hit *Black Nativity*. Other regional credits include *Once on This Island* (Round House); *Barrio Grrrl*, *Carmen Jones* and Debbie Allen's *Soul Possessed* featuring Arturo Sandoval and Patti LaBelle (Kennedy Center); and *Amen Corner* and *Spunk* (African Continuum Theatre Company). He received formal training at Karamu House and Cleveland State University



**JAY WESTIN** (*Male Swing*)'s D.C.-area credits include *La Cage aux Folles* (Signature Theatre); *The Little Mermaid* and *A Chorus Line* (Olney Theatre Center, 2014 Helen Hayes nomination); *Spamalot*, *Legally*

*Blonde*; *Joseph... Dreamcoat* and *Hairspray* (Toby's Dinner Theatre, 2015 Helen Hayes nomination); *Big Nate* (Adventure Theatre MTC); and the 2013 Kennedy Center Honors. Regional credits include *La Cage aux Folles* (Ivoryton Playhouse). Educational credits include *Sweet Charity*, *The Drowsy Chaperone*, *Finian's Rainbow*, *Cabaret*, *On the Town*, *Man of La Mancha* and *The Enchantress*. He received his B.M. in musical theater from The Catholic University of America. [www.jaywestin.com](http://www.jaywestin.com)



**NICOLE WILDY** (*Heavenly Friend* / *Ensemble*)'s Arena Stage credits include *Akeelah and the Bee* (*Akeelah* understudy). D.C.-area appearances include Maretha in *The Piano Lesson* and Royal Child in *The King*

and *I* (Olney Theatre Center); *Want/School Girl* in *A Christmas Carol* (Ford's Theatre); and *La Bohème* and *The Little Prince* (Washington National Opera at the Kennedy Center). Off-Broadway she performed as *Jemima* in *Dream Street* (The Pearl) and *Lyrics for Life* (Symphony Space). Nicole appeared on TLC's *Broadway at The White House*. She was a soloist at *Broadway Night* at the Apollo Theater and at the U.S. Open in Arthur Ashe Stadium. She is an award-winning competitive dancer at PowerUp Dance Center. An eighth-grader at Folly Quarter Middle School, Nicole enjoys trombone choir and jazz band. Instagram: @nikki.wildy. [www.nicolewildy.com](http://www.nicolewildy.com)



**JESSICA WU** (*Ensemble*) returns to Arena Stage, where she was last seen in *Oklahoma!* and *The Music Man*. Other credits include Broadway's *A Chorus Line*, *The Radio City Spring Spectacular*, *Shakespeare in the Park's The Comedy of Errors* and productions at Lincoln Center, BAM, Signature Theatre, Paper Mill, Goodspeed, Sacramento Music Circus, TUTS, PCLO, Kansas City Starlight, The Muny and Center Stage, as well as the national tours of Tommy Tune's *Dr. Dolittle*, *The King and I*, *Miss Saigon*, *The Wizard of Oz* and *A Chorus Line*. Jessica wrote the book, music and lyrics for *Brass Heart the musical* which is receiving an Off-Broadway lab this spring with the New American Theatre Company of New York. NYU Steinhardt alumni. Love and thanks to Parker, Molly, Danielle, Megs, Rosi and Ian. [www.brassheartthemusical.com](http://www.brassheartthemusical.com)



**PHIL YOUNG** (*Ensemble*) makes his Arena Stage debut. D.C. credits include *La Cage aux Folles* (Signature Theatre). Recent credits include *Oklahoma!* and *Hairspray* (Paramount Theatre), *Sophisticated Ladies* with Jennifer Holliday (ZACH Theatre), and *La Cage aux Folles* with Lee Roy Reams (Wick Theatre). He is a NFAA YoungARTS Award Winner and has a BFA in Musical Theatre from Penn State University.





The theatrical event of the season

# TITANIC



The Tony Award®-winning musical in a  
360-degree immersive production.

December 13 – January 29

## nicholas rodriguez

The *Carousel* star blends  
Broadway with jazz, folk and  
blues in an intimate cabaret

January 31 – February 4  
Tickets only \$35



**signature** 4200 Campbell Avenue Arlington, VA 22206  
Free Parking 16 Nearby Restaurants

**703 820 9771 | SigTheatre.org**



# RAGTIME

★THE MUSICAL★

On Sale Now!

March 10-May 20, 2017



**www.fords.org**

book by Terrence McNally; music by Stephen Flaherty; lyrics by Lynn Ahrens; based on the novel *Ragtime* by E.L. Doctorow;  
music direction by Christopher Youstra; choreographed by Michael Bobbitt; directed by Peter Flynn

Lead Sponsor: Altria Group | Production Sponsors: ConocoPhillips; Oshkosh Corporation | Season Sponsors: The Home Depot; Chevron

Photo of Kevin McAllister by Scott Suchman.



## CREATIVE TEAM

**RICHARD RODGERS** (Music) and **OSCAR HAMMERSTEIN II** (Book & Lyrics) joined forces to create the most successful partnership in musical theater. Rodgers first collaborated with Lorenz Hart on *On Your Toes*, *Babes in Arms*, *The Boys from Syracuse*, *I Married an Angel* and *Pal Joey*. Hammerstein collaborated with Rudolf Friml, Sigmund Romberg, Vincent Youmans and Jerome Kern on *The Desert Song*, *Rose-Marie*, *The New Moon* and *Show Boat*. *Oklahoma!* was the first R&H musical, followed by *Carousel*, *Allegro*, *South Pacific*, *The King and I*, *Me and Juliet*, *Pipe Dream*, *Flower Drum Song* and *The Sound of Music*. R&H wrote one musical for film, *State Fair*, and one for TV, *Cinderella*. Collectively, their musicals earned two Pulitzer Prizes and 35 Tony, 15 Oscar, two Grammy and two Emmy Awards. After Hammerstein's death, Rodgers continued to write, producing *No Strings*, *Do I Hear a Waltz?*, *Two by Two*, *Rex* and *I Remember Mama*. In 1990, Broadway's 46th St. Theater was renamed in Rodgers' honor.

**MOLLY SMITH** (Director) has served as Artistic Director since 1998. Her more than 30 directing credits at Arena Stage include *Oliver!*, *The Originalist*, *Fiddler on the Roof*, *Camp David*, *Mother Courage and Her Children*, *Oklahoma!*, *A Moon for the Misbegotten*, *My Fair Lady*, *The Great White Hope*, *The Music Man*, *Orpheus Descending*, *Legacy of Light*, *The Women of Brewster Place*, *Cabaret*, *South Pacific*, *Agamemnon* and *His Daughters*, *All My Sons* and *How I Learned to Drive*. She most recently directed *Our Town* at Canada's Shaw Festival. Her directorial work has also been seen at The Old Globe, Asolo Repertory, Berkeley Repertory, Trinity Repertory, Toronto's Tarragon Theatre, Montreal's Centaur Theatre and Perseverance Theater in Juneau, Alaska, which she founded and ran from 1979-1998. Molly has been a leader in new play development for over 30 years. She is a great believer in first, second and third productions of new work and has championed projects including *How I Learned to Drive*, *Passion Play*, *a cycle*, *Next to Normal*, and *Dear Evan Hansen*. She has worked alongside playwrights Sarah Ruhl, Paula Vogel, Wendy Wasserstein, Lawrence Wright, Karen Zacarias, John Murrell, Eric Coble, Charles Randolph-Wright and many others. She led the re-invention of Arena Stage, focusing on the architecture and creation of the Mead Center for American

Theater and positioning Arena Stage as a national center for American artists. During her time with the company, Arena Stage has workshopped more than 100 productions, produced 39 world premieres, staged numerous second and third productions and been an important part of nurturing eight projects that went on to have a life on Broadway. In 2014, Molly made her Broadway debut directing *The Velocity of Autumn*, following its critically acclaimed run at Arena Stage. She was awarded honorary doctorates from American University and Towson University.

**PARKER ESSE** (Choreographer) is a five-time Helen Hayes nominee for Best Choreography. He received the award in 2010 for Arena Stage's *Oklahoma!* at Arena Stage, where he also choreographed *Oliver!*, *Fiddler on the Roof*, *Smokey Joe's Café*, *The Music Man*, *The Light in the Piazza*, *The Mystery of Irma Vep* and *A Christmas Carol 1941*. Parker directed and choreographed *Crazy for You* and *West Side Story* for the Finger Lakes Music Theatre Festival. Other choreography credits include Steven Sondheim and Wynton Marsalis' *A Bed and a Chair: A New York Love Affair* (New York City Center's ENCORES!); *Seven Brides for Seven Brothers* (Ogunquit Playhouse); *A Wonderful Life*, *Fiddler on the Roof*, *The Most Happy Fella* and *Carousel* (Goodspeed Opera House); *West Side Story* (Signature Theatre); *Bells are Ringing* and *Little Shop of Horrors* (Berkshire Theatre Group); and *Sweet Charity* and *Guys and Dolls* (Shaw Festival). He also served as Associate Choreographer for Broadway's *Finian's Rainbow* and *A Tale of Two Cities*, and was a featured performer in *Fosse*.

**PAUL SPORTELLI** (Music Director)'s Arena Stage credits include *Oliver!*, *Fiddler on the Roof*, *My Fair Lady* and *The Light in the Piazza* (Helen Hayes nomination). He collaborated with Molly Smith on *My Fair Lady* and *Mack and Mabel* at Canada's Shaw Festival, where he has been music director since 1998. Shaw Festival credits include *Sweeney Todd*, *Floyd Collins* and *Happy End*. Originally from Connecticut, Paul made his Broadway conducting debut with *Aspects of Love*. Other credits include *Les Misérables* (national tour) and *Miss Saigon* and *Beauty and the Beast* (Toronto). He is the co-writer of six musicals, including *Tristan and Maria Severa* (Shaw Festival premieres, available on iTunes), *Little Mercy's First Murder* (Tarragon Theatre, seven Dora Awards) and *33-1/3* (Canadian Music Theatre Project,



 SHAKESPEARE THEATRE COMPANY

# the secret garden



THE TONY AWARD®-WINNING MUSICAL

book and lyrics by  
**MARSHA NORMAN**

music by  
**LUCY SIMON**

based on the novel by  
**FRANCES HODGSON BURNETT**

directed by  
**DAVID ARMSTRONG**

## Begins November 15

SAVE 10% off tickets with  
promo code: **ARENA10**  
[ShakespeareTheatre.org/Arena10](http://ShakespeareTheatre.org/Arena10)  
202.547.1122

Offer restrictions apply. Please call STC Box Office for details. A co-production with **The 5th Avenue Theatre**. Musicals at the Shakespeare Theatre Company are made possible by the **Beech Street Foundation**. *The Secret Garden* is sponsored by the **HRH Foundation**. This production is dedicated to the memory of **Ellie Merrill**, former STC Trustee and beloved patron of the arts. Restaurant Partner: **Carmine's**



**GAY MEN'S  
CHORUS**  
OF WASHINGTON DC

**MARCH 10, 11 & 12**  
**LINCOLN THEATRE**  
**1215 U ST NW**

Presenting the Pulitzer Prize  
and Tony Award-winning  
musical comedy –  
with an LGBTQ twist!

Directed by  
**John Moran**  
Music Direction by  
**Thea Kano**

Book by Abe Burrows,  
Jack Weinstock and Willie Gilbert  
Music and Lyrics by Frank Loesser  
Based upon the book by  
Shepherd Mead  
Originally produced by Cy Feuer  
and Ernest H. Martin in association  
with Frank Productions  
Presented through special  
arrangement with  
Music Theatre International

Use code H2SARENA for 10% off the ticket price!

**TICKETS: Call 1-877-435-9849 or visit [www.GMCW.org](http://www.GMCW.org)**



Playwrights Guild of Canada Award).  
www.jaypaulproject.com

**TODD ROSENTHAL** (Set Designer)'s Broadway credits include *August: Osage County* (Tony Award), *The Motherf\*\*\*er with the Hat* (Tony nomination), *Who's Afraid of Virginia Woolf?*, *Of Mice and Men* (filmed by National Theatre Live), *This is Our Youth* and *Fish in the Dark*. Upcoming Broadway, *Roman Holiday* and *Mary Page Marlowe*. Off-Broadway, *Red Light Winter* (Barrow Street), *Domesticated* (Lincoln Center) and *Qualms* (Playwrights Horizons). Designer for six years for Big Apple Circus. International credits, *August: Osage County* (London and Australia), *The Beauty Queen of Leenane* (Ireland) and *Nice Fish* (London). Regional work includes Steppenwolf, Goodman (artistic partner), Guthrie, Berkeley Repertory and many others. Museum exhibitions include "Mythbusters: The Explosive Exhibition" and "The International Exhibition of Sherlock Holmes." Awards include Olivier, Helen Hayes, Ovation, Garland, Jefferson and Michael Merritt. Professor, Northwestern University. Graduate, Yale Drama.

**ILONA SOMOGYI** (Costume Designer)'s Arena Stage credits include *King Hedley II*, *Smokey Joe's Café*, every tongue confess, *The Quality of Life*, *A Delicate Balance*, *Gem of the Ocean*, *The Rainmaker*, *Anna in the Tropics*, *A Man's a Man* and *Of Mice and Men*. New York credits include the original and Broadway productions of *Clybourne Park* as well as *Gloria*, *The World is Round*, *Dinner with Friends*, *Satchmo at the Waldorf*, *My Name is Asher Lev*, *A Small Fire*, *Jerry Springer: The Opera*, *Almost an Evening* and *Home*. Regional credits *Grey Gardens* (Ahmanson Theatre), *Anything Goes* (Goodspeed) and many others at The Guthrie, Oregon Shakespeare Festival, Mark Taper Forum, Chicago Shakespeare Festival, Huntington, Berkeley Repertory, South Coast Repertory, Long Wharf, Hartford Stage and Yale Repertory. Ilona is on faculty at Yale School of Drama.

**KEITH PARHAM** (Lighting Designer)'s Broadway credits include *Thérèse Raquin* (Roundabout). Off-Broadway credits include *The Purple Lights of Joppa Illinois* and *Between Riverside and Crazy* (Atlantic Theater Company); *The Model Apartment* (Primary Stages); *Tribes*, *Mistakes Were Made* and *Red Light Winter* (Barrow Street Theatre); *Stop the Virgins* (Karen O at St. Ann's Warehouse/Sydney Opera House);

*Ivanov* and *Three Sisters* (CSC); *A Minister's Wife* (Lincoln Center); and *Adding Machine: A Musical* (Minetta Lane). International credits include *Homebody/Kabul* (National Theatre of Belgrade, Serbia). Regional credits include TUTA, Goodman, Steppenwolf, Court Theatre, Mark Taper Forum and Arena Stage, among others. He is the recipient of Obie and Lucille Lortel Awards.

**JOSHUA HORVATH** (Sound Designer) previously designed *Oliver!* and *Baskerville* at Arena Stage. He is a Bay Area and Chicago award-winning sound designer/composer/music producer. His designs and music have been heard regionally at Long Wharf, Hartford Stage, Center Stage, Alliance Theatre, Goodman, Steppenwolf, Court Theatre, Lookingglass, Milwaukee Repertory, McCarter, Cincinnati Playhouse in the Park, Kansas City Repertory, Lincoln Center, Kennedy Center, Mark Taper Forum and Oregon Shakespeare. Joshua has taught sound design for theater and film at Northwestern University and DePaul University. He is a four-time Joseph Jefferson Award winner and an LA Ovation winner, company member of House Theatre of Chicago, artistic associate at Lookingglass Theatre Company and collaborative partner with Goodman Theatre.

**RAY NARDELLI** (Sound Designer) previously designed Arena Stage's *Oliver!* Off-Broadway credits include *Lookingglass Alice* (New Victory Theater). Regional credits include Goodman, Steppenwolf, The Guthrie, Old Globe, Adrienne Arsht Center (Miami), Indiana Repertory, Dallas Theater Center, Oregon Shakespeare, Auditorium Theatre, McCarter, Milwaukee Repertory, Court Theatre, Hartford Stage, Alliance Theatre, Syracuse Stage, Alley Theatre, Chicago Shakespeare and many more. He has recorded, mixed and produced CDs for over ten new musicals. Over 400 film, TV, DVD and computer game credits worldwide. Four Chicago Jeff Awards. Pre-Broadway production work on *The Last Ship*, *Bring It On*, *Ann*, *The Addams Family*, *Light in the Piazza* (assistant designer), *All Shook Up*, *Death of a Salesman* and *Moonlight and Magnolias*.

**ANNE NESMITH** (Wig Designer) returns to Arena Stage, where her design credits include *The Little Foxes*, *All the Way*, *Oliver!*, *Destiny of Desire*, *Fiddler on the Roof*, *Mother Courage and Her Children*, *Guess Who's Coming to Dinner*, *Other Desert Cities* and *The Music Man*. Her







WASHINGTON  
NATIONAL  
CATHEDRAL

## Christmas concerts

### *Handel's Messiah*

FRIDAY, DECEMBER 2, 7:30 PM

SATURDAY, DECEMBER 3, 4 PM

SUNDAY, DECEMBER 4, 4 PM

### *Christmas with the King's Singers*

SUNDAY, DECEMBER 18, 5 PM

TICKETS START AT \$25.

@ CATHEDRAL.ORG/CONCERTS

📞 202.537.2228

photo: Ian Douglas

WE MAKE  
ANYTHING  
CAN HAPPEN  
HAPPEN

*Shadowland by Pilobolus*

**COMING SOON:** Joshua Bell • Kronos Quartet  
Royal Concertgebouw Orchestra • SHIFT Festival  
DJ Kid Koala's *Nufonia Must Fall* • and much more!

**WashingtonPerformingArts.org • (202) 785-9727**

Season Sponsors: Dr. Gary Mather & Ms. Christina Co Mather



WASHINGTON  
PERFORMING ARTS

We make it happen



recent work includes *La Cage aux Folles* (Signature Theatre), *La Bohème* and *L'Opera Seria* (Wolf Trap), *Così fan tutte* (Nishinomiya, Japan) and *110 in the Shade* (Ford's Theatre). Her designs have been seen at the Kennedy Center, Opera Philadelphia, Shakespeare Theatre Company, Washington Ballet and Saito Kinen Festival in Matsumoto, Japan. Anne was the resident wig/makeup designer for the Baltimore Opera and has created wigs for Smithsonian National Portrait Gallery programs, Investigation Discovery's *Ice Cold Killers*, Maryland Public Television and the U.S. Army's tour *Spirit of America*.

**DAVID LEONG** (*Fight Choreography and Mime*)'s Arena Stage credits include *Oliver!*, *Fiddler on the Roof*, *Mother Courage and Her Children*, *A Time to Kill*, *Oklahoma!*, *A View from the Bridge*, *Death of a Salesman*, *The Mystery of Irma Vep*, *The Quality of Life* and *Legacy of Light*. On Broadway, *Fool for Love*, *Amazing Grace*, *Billy Elliott*, *A Time to Kill*, *The Civil War*, *Carousel*, *Company*, *Hamlet*, *Macbeth*, *Ma Rainey's...*, *King Hedley II*, *Picnic*, *Sex and Longing*, *The Rainmaker*, *A Delicate Balance*, *The Homecoming*, *Solitary Confinement* and *In the Summer House*. Off-Broadway credits include Lincoln Center, NYTW, MTC, The Public, Playwrights Horizons and Second Stage. Regional credits include Shakespeare Theatre, Mark Taper, Guthrie, Goodman, ART, ACT, Yale Repertory, Long Wharf, Hartford Stage, Center Stage, Seattle Repertory, Alley and Williamstown. Professor of theater at Virginia Commonwealth University.

**LYNN WATSON** (*Dialect Coach*)'s Arena Stage credits include *Oliver!*, *Fiddler on the Roof*, *Moon for the Misbegotten*, *The Misanthrope*, *M. Butterfly*, *A Time to Kill* and *The Great White Hope*. She has worked extensively as a voice, speech and dialects specialist at leading regional theaters. D.C. credits include *The Glass Menagerie* and *Cat on a Hot Tin Roof* (Kennedy Center), Ford's Theatre, Signature Theatre, Olney and Round House. Other credits include four seasons at South Coast Repertory, *A Streetcar Named Desire* (A.C.T.) and *Skylight* (Mark Taper Forum). In 2009, she founded a project to revive public domain plays by women. Other directing includes the world premiere of Tina Howe's *Milk and Water*. Lynn is past president of the Voice and Speech Trainers Association (vasta.org) and professor of theater at UMBC.

**ANITA MAYNARD-LOSH** (*Associate and Text Director*) is in her 13th season at Arena Stage. She directed the world premiere of *Our War* and served as associate director on several productions, including *Oliver!* and *Erma Bombeck: At Wit's End*. Anita trained and taught at American Conservatory Theater in San Francisco, was on the faculty at Webster University in St. Louis, headed the theater department at the University of Alaska Southeast and was the associate artistic director of Perseverance Theater in Juneau, Alaska. The Alaska native-inspired production of *Macbeth* that Anita conceived and directed was performed in English and Tlingit at the National Museum of the American Indian in D.C. Through Arena Stage's devised theater program, Voices of Now, Anita has collaborated on creating and directing original plays with communities in India and Croatia.

**WILLIAM YANESH** (*Associate Music Director*) makes his Arena Stage debut. He made his Off-Broadway debut last season as a music director, composer and lyricist with *Caps for Sale* (New Victory Theater). D.C.-area credits as music director include *Floyd Collins* (1st Stage), *Oliver!* (Adventure Theatre MTC), *Ordinary Days* (Round House) and *The Last Five Years* (Signature Theatre, Helen Hayes nomination for music direction). His orchestration and arranging credits include *Man of La Mancha* (Shakespeare Theatre Company) and *Miss Nelson is Missing!* (Adventure Theatre MTC). William conducted *Elmer Gantry* and was associate conductor for *West Side Story*. (Signature Theatre) He holds a music composition degree from Carnegie Mellon University.

**TONY NEIDENBACH** (*Assistant Choreographer*) See bio on page 19.

**GEOFF JOSSELSO** (*New York Casting*)'s previous Arena Stage credits include *The Little Foxes*, *Disgraced*, *All the Way*, *Oliver!*, *The Blood Quilt*, *King Hedley II*, *Fiddler on the Roof*, *The Shoplifters*, *Camp David* and *The Velocity of Autumn*. Broadway and Off-Broadway productions include *The Velocity of Autumn*; *Southern Comfort*; *Yank!*; *Enter Laughing*; *Pretty Filthy*; *John and Jen*, *Himself and Nora*; and *Altar Boyz*. Also productions for Actors Theatre of Louisville, Barrington Stage Company, Bay Street Theatre, Brooklyn Academy of Music, Cleveland Play House, Denver Center, Marriott Theatre, North Shore Music Theatre,

# Creekside is the Talk of the Town!



*Artist's rendering.  
Projected opening 2019-2020*



*Ingleside at Rock Creek is a  
CARF accredited, not-for-profit,  
continuing care retirement  
community.*

***We'd love to introduce you to Creekside,  
Ingleside at Rock Creek's upcoming  
addition!*** Creekside combines graceful, classic  
architecture; open, elegant floor plans; and  
exceptional services and amenities with an  
active, engaging lifestyle—*plus* the added  
security of a full continuum of quality on-site  
health services.

***We are taking charter club deposits —  
be among the first to select your choice of  
apartment style & location!***

**CALL 202-596-3083 TODAY FOR  
A PERSONALIZED TOUR!**



**INGLESIDE**  
AT ROCK CREEK  
ENGAGED LIVING  
An Ingleside Community

3050 MILITARY ROAD NW, WASHINGTON, DC | 202-596-3083 | [WWW.IRCDC.ORG](http://WWW.IRCDC.ORG)



## ARENA STAGE LEADERSHIP

Old Globe, Oregon Shakespeare Festival, The Public Theatre, San Francisco Symphony, Sharon Playhouse and the York Theatre Company. In addition to his independent casting office, Geoff teaches master classes around the country and is on faculty at CAP21. [www.geoffjosselson.com](http://www.geoffjosselson.com)

**SUSAN R. WHITE** (*Stage Manager*) is thrilled to be a part of Arena's 67th season and to be working, once again, with Artistic Director Molly Smith. Susan is a proud member of Actors' Equity Association. With deepest gratitude to Zel.

**KURT HALL** (*Replacement Stage Manager*) Arena Stage credits include *The Year of Magical Thinking* starring Kathleen Turner, *Born for This*, *All the Way, Sweat, Destiny of Desire*, *The Blood Quilt*, *Our War*, *The Shoplifters*, *Smokey Joe's Café*, *Mother Courage and Her Children* starring Kathleen Turner, *Maurice Hines is Tappin' Thru Life*, *Good People*, *Red Hot Patriot: The Kick-Ass Wit of Molly Ivins* starring Kathleen Turner, *The Normal Heart*, *Red, Ruined*, every tongue confess starring Phylicia Rashad, *Duke Ellington's Sophisticated Ladies*, *Looped* starring Valerie Harper, *Next to Normal* starring Alice Ripley, *Awake and Sing!* and *The Goat, or Who is Sylvia*. Additional regional credits at the Kennedy Center, Roundabout Theatre Company, McCarter Theatre Center, Shakespeare Theatre Company and Signature Theatre. Thanks to his family for all their support.

**TREVOR A. RILEY** (*Assistant Stage Manager*) returns to Arena Stage after having worked on *Destiny of Desire* and *Our War*. Other D.C.-area credits include *Jack and Phil*, *Slayers of Giants-INC*, *A Year with Frog and Toad* and *Sinbad: The Untold Tale* (Imagination Stage); *The Diary of Anne Frank*, *Bakersfield Mist*, *Godspell* and *A Christmas Carol* (Olney Theatre Center); and *Just The Two of Each of Us*, *Appropriate*, *Detroit* and *The Elaborate Entrance of Chad Deity* (Woolly Mammoth).

**EDGAR DOBIE** (*Executive Director*) continues to enjoy a career in public theater after nearly four decades. He has served as executive director of Trinity Repertory Company in Providence, founding managing director of Toronto's Canadian Stage Company and managing director at National Arts Centre in Ottawa and Vancouver's New Play Centre. Based in New York City for six years, he was president of Andrew Lloyd Webber's Really Useful Company and the North American executive producer of *Riverdream*, as well as managing producer of the Tony Awards. His Broadway producing credits include *Sunset Boulevard* (Tony Award for Best Musical), *Joseph and the Amazing Technicolor Dreamcoat*, Paul Simon's *The Capeman*, *The Adventures of Tom Sawyer*, Boubil and Schönberg's *The Pirate Queen* and Dolly Parton's *9 to 5*. He is a member of the Directors for theatreWashington and the Southwest Business Improvement District. He also serves as a Tony Award nominator for the 2017 season. Edgar, his good wife Tracy and their daughter Greta Lee are all proud residents of Southwest Washington, D.C.

This theater operates under an agreement between the League of Resident Theatres and Actors' Equity Association.



The actors and stage managers are members of Actors' Equity Association, the Union of Professional Actors and Stage Managers in the United States.



The scenic, costume, lighting and sound designers in LORT theaters are represented by United Scenic Artists, Local USA-829 of the IATSE.



The Director and Choreographer are members of the **STAGE DIRECTORS AND CHOREOGRAPHERS SOCIETY**, a national theatrical labor union.

Musicians are members of the American Federation of Musicians, Local 161-710.

Arena Stage is a constituent of the Theatre Communications Group (TCG), the national organization for the American theater.

## ARENA STAGE LEADERSHIP

**MOLLY SMITH** (*Artistic Director*) See bio on page 25.

## ARENA STAGE BOARD OF TRUSTEES 2016/17

<b>CHAIR</b> Judith N. Batty	Andrew R. Ammerman Kent Amos Decker Anstrom Joanne Barker Linda A. Baumann Sander Bieber Susan Haas Bralove Lavern Chatman Debbie Driesman John Edelmann Jeri Epstein Richard Feinstein Elliot Feldman Nicholas Goad Ann Hamilton Patti Herman Margot Kelly Daniel Korengold B. Thomas Mansbach David BH Martin Joyce Moorehead Terry R. Peel Lucia Riddle Gene Samburg David Bruce Smith Molly Smith Sheila Stampfli Robert Stout	<b>HONORARY BOARD</b> Jim Abdo Ashok Bajaj Michele G. Berman Steven R. Bralove John Derrick Michael Desantis Nancy M. Folger Natwar Gandhi Sylvia Greenberg Ellen K. Harrison Kay Kapoor Judy Lansing Kovler Mark Levine Nancy Low David O. Maxwell Joan P. Maxwell Ronald A. Paul, M.D. Beverly Perry Judy Lynn Prince William S. Sessions Richard W. Snowdon Sandra E. Taylor Grace Terpstra Margaret Tomlinson Andrea Weiswasser	<b>LIFE TRUSTEES</b> Norman Bernstein Zelda Fichandler Lee G. Rubenstein  <b>EMERITUS TRUSTEES</b> Arlene and Robert Kogod  <b>PAST PRESIDENTS AND CHAIRS</b> J. Burke Knapp Norman Bernstein Curtin Winsor, Jr. Lee G. Rubenstein Richard W. Snowdon Denie S. Weil Riley K. Temple Steven R. Bralove Wendy Farrow James J. Rouse John M. Derrick, Jr. Mark Shugoll David E. Shiffrin Beth Newburger Schwartz
<b>PRESIDENT</b> Beth Newburger Schwartz			
<b>VICE CHAIRS</b> Eric Braverman Edgar Dobie Vicki J. Hicks John Lynham Raymond Scudlo David E. Shiffrin			
<b>TREASURER</b> Larry Franks			
<b>ASSISTANT TREASURER</b> Hubert M. Schlosberg			
<b>SECRETARY</b> Shawna Watley			
<b>ASSISTANT SECRETARY</b> Richard A. Newman			
<b>GOVERNING BOARD</b>			

## THE NEXT STAGE CAMPAIGN DONORS

Arena Stage gratefully acknowledges the many individuals, families, corporations and foundations whose support of the Next Stage Campaign helped us realize the construction and expanded programming of our new center, Arena Stage at the Mead Center for American Theater. In recognition of their tremendous generosity and visionary philanthropy, Arena Stage is proud to honor Gilbert and Jaylee Mead with the naming of our new theater center which opened its doors to the public on October 23, 2010.

**Our Donor Honor Wall represents all gifts to the Next Stage Campaign of \$30,000 or more.** A full listing of all Next Stage Campaign contributors of \$1,000 or more can be found at [www.arenastage.org/donate/next-stage-campaign](http://www.arenastage.org/donate/next-stage-campaign). For more information about future naming opportunities, please contact Kristen Mitchell at 202-600-4026 or [kmitchell@arenastage.org](mailto:kmitchell@arenastage.org).

## THEATRE FORWARD THEATRE FORWARD FUNDERS (CONTRIBUTORS AS OF MAY 2016)

Theatre Forward advances the American theatre and its communities by providing funding and other resources to the country's leading nonprofit theatres. Theatre Forward and our theatres are most grateful to the following funders for earmarking their contributions to our educating through theatre programs:

### \$50,000 - \$99,000

Schloss Family Foundation  
Wells Fargo

### \$25,000 - 49,999

Buford Alexander and Pamela Farr  
Anonymous  
Steven and Joy Bunson  
James S. and Lynne Turley

### \$15,000 - 24,999

Alan & Jennifer Freedman  
Frank & Bonnie Orlowski  
National Endowment for the Arts

Southwest Airlines\*  
Theatermania / Gretchen Shugart  
George S. Smith, Jr.

### \$10,000 - 14,999

Lisa Orberg  
RBC Wealth Management  
Daniel A. Simkowitz  
TD Charitable Foundation  
Isabelle Winkles

### \$2,500 - \$9,999

Mitchell J. Auslander  
Paula A. Dominick

Dorfman and Kaish  
Family Foundation, Inc.  
John R. Dutt  
Bruce R. and Tracey Ewing  
Brian J. Harkins  
Gregory S. Hurst  
Howard and Janet Kagan  
Joseph F. Kirk  
John R. Mathena  
The Sheri and Les Biller  
Family Foundation  
John Thomopoulos

\* In-kind support





FULL CIRCLE SOCIETY - ARENA STAGE'S PLANNED GIVING PROGRAM

Arena Stage gratefully acknowledges these individuals who ensure the future of Arena Stage by making a planned gift. These gifts assure that Arena Stage will continue to challenge, educate and entertain audiences, and maintain its excellence in theater nationally, and internationally for generations to come.

Arena can help you accomplish your personal, family and philanthropic goals while benefiting the theater. Supporters who make planned gifts to Arena are invited to join the Full Circle Society and enjoy special benefits.

THE FOLLOWING ARE MEMBERS AS OF SEPTEMBER 13, 2016.

MEMBERS

Anonymous (7)  
Esthy and Jim Adler  
Dr. and Mrs.\* Clement C. Alpert  
Family of H. Max\* and  
Josephine\* F. Ammerman  
Steven Bralove  
Louise Budelis  
Dorothy Bunevich  
John P. Cahill  
Ellen MacNeille Charles  
Robert D. Davis Jr.\* and  
Henry J. Schalizki  
Donald H. Flanders  
Nancy M. Folger  
Catherine F. and James F.\* Fort, Sr.  
Arlene Friedlander  
Dr. JC Hayward  
Vicki J. Hicks  
Lauren and Glen Howard  
David Insinga and Robert McDonald  
Thomas Jesulaitis  
Margot Kelly  
Drs. Susan and Perry Klein

Dr. Seth A. Koch and  
Barbara Bellman Koch  
Herb and Dianne Lerner  
Herbert A. Lindow\*  
John and Patricia Long  
Richard Schwartz\* and  
Beth Newburger Schwartz  
Judy Lynn Prince  
Dr. and Mrs. Mark Shugoll  
Molly Smith and Suzanne  
Blue Star Boy  
Dick and Katie Snowdon  
Helga Tarver  
Helene Toiv  
Margaret L. Tomlinson  
Frederick H. Walton\*  
Frankie and Jerry\* Williamson

BEQUESTS AND GIFTS  
IN REMEMBRANCE

Estate of Audrey J. Barnett  
Estate of Harry J. Boissevain  
Estate of Henrietta T. Braunstein  
Estate of Patricia Carroll  
Estate of Helen G. Coddling  
Estate of Albert Chaiken  
Estate of Marcus Cohn  
Estate of Israel and  
Augusta Convisser  
In Memory of Helen W. and  
Felix E. Geiger  
Estate of Ann Gibbons  
Estate of Ezra Glaser  
Estate of George Grizzard  
Estate of Giselle Hill  
Estate of Joan E. Kain  
In Memory of Jean Russ Kern  
and Jeannette G. Kern  
Estate of LaRue R. Lutkins  
Estate of Suzy Platt  
Estate of Gruine Robinson  
Estate of Eric Weinmann  
\* Deceased

For more information on the Full Circle Society, we invite you to contact Holly Oliver at 202-600-4029 or holiver@arenastage.org.  
THANK YOU FOR LEAVING YOUR LEGACY AT ARENA STAGE

# Host Your New Year's Bash

at the  
MEAD CENTER FOR AMERICAN THEATER



CONTACT US TODAY TO LEARN MORE ABOUT OUR ELEGANT AND FESTIVE EVENT SPACES. 202-600-4040 | [RENTALS@ARENASTAGE.ORG](mailto:RENTALS@ARENASTAGE.ORG)

# THANK YOU - THE ANNUAL FUND

## THE ANNUAL FUND

Arena Stage gratefully acknowledges the many individuals, families, foundations and corporations who support the theater's work by contributing to the Annual Fund. These gifts make it possible for the theater to continue presenting high-quality productions and innovative education programs that strengthen the community in which we live.

For more information on the benefits of becoming an Annual Fund contributor, call the Development Department at 202-600-4177. The following are contributors as of October 7, 2016.

### OVATION CIRCLE

Anonymous  
Arlene and Robert Kogod  
Lola C. Reinsch  
Beth Newburger Schwartz and  
Richard Schwartz\*

### FOUNDER'S CIRCLE

Andrew R. Ammerman  
Diane and Norman Bernstein  
The Estate of Albert Chaiken  
Joan and David Maxwell  
David Bruce Smith

### BENEFACTOR'S CIRCLE

Anonymous  
Estate of Audrey J. Barnett  
Susan and Steven Bralove  
Karen and Edward Burka and the  
Harry and Fay Burka Foundation  
Ellen MacNeille Charles  
John and Linda Derrick  
Jeri and Gary Epstein  
George and Duffy Ftikas  
Sylvia Kay Greenberg  
B. Thomas Mansbach  
David and Martha Martin  
Gene Samburg  
Hubert (Hank) and  
Charlotte\* Schlosberg  
Peggy and David Shiffrin  
Mr. and Mrs. Richard W. Snowdon

### LEADERSHIP CIRCLE

Anonymous  
Kent and Carmen Amos  
Decker Anstrom and  
Sherry Hiemstra  
Joanne Barker  
Judith N. Batty  
Linda A. Baumann  
Michele and Allan Berman  
Sandy Bieber and  
Linda Rosenzweig  
Eric Braverman and Neil Brown  
Lavern Chatman  
Susan Clampitt and  
Jeremy Waletzky  
Debbie Driesman  
John Edelmann and Jeff Love  
Pam and Richard Feinstein  
Drs. Elliot J. Feldman and  
Lily Gardner Feldman  
Larry Franks and Ellen Berelson  
Henock Gebreamlak and Nicholas  
Goad  
Ann O. Hamilton  
Ellen K. Harrison  
Patti and Mitchell Herman  
Kay Kapoor  
Margot Kelly  
Mr. and Mrs. Daniel Korengold  
John and Lenora Lynham  
Thomas and Joyce Moorehead  
Richard and Janice Newman  
Toni and Ronald Paul  
Ann and Terry R. Peel  
R. Lucia Riddle  
Toni A. Ritzenberg  
Raymond S. Sczudlo and Deborah  
Sams Sczudlo  
Sheila Stampfli  
Bob Stout  
Shawna Watley

### PRESIDENT'S CIRCLE

Anonymous  
Curtis Bell  
Mrs. Lois England  
Virginia McGehee Friend  
Rick and Carol Froehlich  
Sheldon and Audrey Katz  
Mark T. Lewellyn  
The Robert and Natalie Mandel  
Family Foundation  
Alan and Marsha Paller  
Craig Pascal and Victor Shargai  
Peggy and Alec\* Tomlinson

### PRODUCER'S CIRCLE

Anonymous (3)  
Esthy and Jim Adler  
Celia and Keith Arnaud  
Nancy and John Benson  
Louis Delair, Jr.  
Edgar and Tracy Dobie  
Nancy M. Folger  
David C. Frederick and  
Sophia Lynn  
Marilyn and Michael Glosserman  
Amnon and Sue Golan  
Mark\* and Sara Goldberg  
Meg and John Hauge  
Vicki J. Hicks  
William Logan Hopkins  
Judy and Peter Kovler /  
The Kovler Fund  
Bill Lands and Norberta Schoene  
Mark Levine and Sara Imershein  
Robert Liberatore and Debra Kraft  
Terence and Laura McAuliffe  
Mills Family Foundation  
Hazel C. Moore  
John and Veronica Morrison  
Greg Nelson and  
Jose Cunningham  
Melanie and Larry Nussdorf  
Sydney M. Polakoff and  
Carolyn Goldman  
Judy Lynn Prince  
Franklin D. Raines and  
Denise Grant  
Melissa and Alex Romain  
Margaret Ann Ross  
Dr. and Mrs. William Rule  
Susan Scanlan  
The Honorable and  
Mrs. William Sessions  
George L. Shields Foundation  
Molly Smith and  
Suzanne Blue Star Boy  
Judi and Richard Sugarman  
Tim and Grace Terpstra  
Stephen and Andrea Weiswasser  
Ellen and Bernard Young  
Judy and Leo Zickler

### DIRECTOR'S CIRCLE

Anonymous (6)  
Jim and Mai Abdo  
Alan Asay and Mary Sturtevant  
Priscilla Aycock  
Elfreda Baptist  
Dr. and Mrs. C. Wrandle Barth  
Christopher Bavalock and  
Martha Huelsbeck  
Alan and Kyle Bell  
Jim Bellas and Kip Fenton  
Deborah Bowles  
J. Alton and Cynthia Boyer  
Joe and Sue Bredekamp  
Bonnie and Jere Broh-Kahn

Arlene Brown and Gene Bialek  
Marilyn Charles and  
Reuben Simmons  
Clotilda Bowie Cassidy  
The Charles Delmar Foundation  
Michael DeSantis and  
Patrick Baugh  
Robert P. Donaldson  
Kathy and Jody Dreyfuss  
Anita Dunn and Robert Bauer  
Barbara and David Ehrlich  
Lorry M. Fenner, PhD  
Susan and Jay Finkelstein  
Mr. and Mrs. David Fisher  
Christopher and Carol Frombolto  
J. H. Gaddis  
The Honorable William and  
Linda Garvelink  
Lucia and Woolf Gross  
Fruzsina M. Harsanyi and  
Raymond Garcia  
Steven and Tanya Hilton  
Cal and Barbara Klausner  
Lauren S. Kogod  
Leslie S. Kogod  
Lori Laitman and  
Bruce Rosenblum  
Jean and John Lange  
Herb and Dianne Lerner  
Nancy and Dan Longo  
Nancy Otto Low  
John and Mary Lee Malcolm  
Abby Mandel  
Steve Mayer and Vera Oye\* Yaa  
Tom and Ingrid  
McPherson Foundation  
Alan and Ruth Melvin  
Dr. Robin Mockenhaupt and  
Dr. Ralph Popp  
Ann K. Morales  
Laura Peebles and  
Ellen Fingerman  
Beverly Perry  
Michael R. Pollard and  
Penelope Pollard  
Benjamin and Judith Pratt  
Robert and Nan Ratner  
Jim and Rita Regino  
Talmadge and Mary E. Roberts  
Helen Ross  
Steven and Beverly Schacht  
Steven and Marie Schram  
McAdo Shuler, Jr.  
Thalia and Lynwood Sinnamon  
Sandra Taylor  
Suzanne Thouvenelle and  
Dennis Deloria  
Anne Marie Tighe  
Laura L. Tosi  
Richard and Leslie Wojciechowicz  
Irene and Alan Wurtzel  
Deborah and David Yaffe  
Margot and Paul Zimmerman

### PLAYWRIGHT'S CIRCLE

Anonymous (2)  
Dr. and Mrs. Clement C. Alpert  
Dean Amel and Terry Savela  
Leon and Robyn Andris  
Ted Bean and Kathy Brown  
David and Ann Beightol  
Dr. Sharon Bennett  
David and Judy Bonior  
Roger and Nancy Brown  
Julie Burton and Roger Hickey  
Dr. Myla Carpenter  
John Chester

Richard Christensen  
Judith Claire  
Richard H. Cleva  
Geri and David Cohen  
Ellen and Michael Cronin  
Joseph DiGangi  
Carolyn and William Doying  
Alan Einhorn and Vicki Cooper  
Skip and Laurette Farmer  
Susan D. and Howard Feibus  
Lorraine Fleming  
Robert and Carole Fontenrose  
Sallie Forman and Jonah Gitlitz  
Samuel Freedman Trust  
Mr. and Mrs. Davis R. Gamble Jr.  
Ruth Bader Ginsburg  
Gregg H. S. Golden  
Catherine and Warren Gorrell  
Loren and Phyllis Haag  
Ellie and John Hagner  
The Honorable Robert and  
Susan Hale  
Patricia Harvey  
Lucia M. Heard  
Sonia Herson  
Cheryl R. Hodge  
William and Judith Holton  
Joseph and Anne Jarboe  
Anne B. Keiser and Douglas Lapp  
Gladys Kessler  
Lindy Knapp  
Leon Fund of the Community  
Foundation Serving Richmond  
and Central VA  
Edward T. Lis, Jr.  
David Lloyd, Realtor  
Walter and Betsy Lohmann  
William and Ruth Lubic  
Daniel and Karen Mayers  
Gail McKee  
Sally and Bill Meadows  
Nancy and Herbert Milstein  
George\* and Nancy Miron  
Patricia Haywood Moore and  
Dr. Roscoe M. Moore Jr.  
Dee Morris  
Dale Mott and Ken Hyle  
Dr. Alfred Munzer and  
Mr. Joel Wind  
Rita O'Brien, Esq. and  
John Imparato  
Ray Olson  
Mr. and Mrs. David M. Osnos  
Kerby L. Parker  
Howard and Dorothy Pedolsky  
Florence and Louis Priebe  
Alvin Phillips and Tia Johnson  
Allen Purvis and Jan Johnson  
Janis Reed and Jack Requa  
Nancy Regan  
Henry and Anne Reich  
Family Foundation  
Bill and Donna Roberts  
Robert and JoAnn Royer  
Trina and Lee Rubenstein  
Jeff and Sarah Sandel  
Eric and Patricia Sanner  
Ronald Simon  
Linda Smith  
Larry and Arlene Spinelli  
Steve and Danelle Springer  
Bill Swedish and Linda Griggs  
Eileen and Michael Tanner  
Sharon Taylor  
Mr. and Mrs. Keith Thackrey  
Linda and Steuart Thomsen  
Ralph Timmons and Janet Hill



# THANK YOU - THE ANNUAL FUND

Anne Paine and Fowler West  
Joan Willis  
Terry and William Witowsky  
Jane Yanulis  
Robert and Anne Yerman

## STAR

Anonymous (4)  
Carolyn Alper  
Joe and Judy Antonucci  
Michael W. and Stacie H. Arpey  
Lynn J. and Lynne A. Barden  
Barbara A. Bennett  
Ms. Joan Berman  
Jerry Bridges and Sally Turner  
Sharie A. Brown  
Susan and Dixon Butler  
Carolyn Cheney  
N. Chesser and J.M. Rowe  
John and Sheila Compton  
Camille Cook  
Mr. and Mrs. James D. Dake  
Anita Difanis and Richard Krajeck  
Jacquelyn and Albert Edmonds  
Sarah G. Epstein  
Bob and Sue Faron  
James and Patricia Flanigan  
Fleishacker Foundation  
The Henry J. Fox Trust  
Louise Gary  
Barbara Gilchrist  
Hon. Joseph and  
Mrs. Alma Gildenhorn  
The Honorable and  
Mrs. William Greenberg  
Grace R. Gregg  
Carol and Bill Gross  
Norene and Timothy Guilford  
Jennifer Hanley  
The Hansan Family  
Jim and Carolyn Harris  
Paul and Marilyn Henderson  
Lucia Hill  
Francis Hinton  
Linda Lurie Hirsch  
Judy Horig  
Dr. David Humm  
Geraldine Inge  
David Insinga and  
Robert McDonald  
Thomas Jesulaitis and  
Barrie Seidman  
Annelle Johnson  
The S. Kann Sons Co. Foundation  
Dr. and Mrs. James Karesh  
Kay Kendall and Jack Davies  
Andrea and Joseph Kerr  
Caroline Klam  
Patricia and John Koskinen  
Mr. Albert Kramer  
Simeon M. Kriesberg and  
Martha L. Kahn  
William and Grace LaChance  
Marvin and Dede Lang  
John and Trish Long  
Peter Lowet and Laura Sloss  
Virginia MacLaury  
Marsha and Mark Mazz  
Emmy McArver  
Eddie and Lynne McCormick  
Edward and Loretta Merrow  
Mrs. Jeanne-Marie and  
Nathan Miller  
Josh Miller and Jerry Noble  
David Montgomery  
Franklin Moore and Erich Hosbach  
Judie and Fred Mopsik  
Myung Nam and Michael Hamilton  
Timothy and Diane Naughton  
Martha Newman  
Mr. and Mrs. Ernest T. Oskin  
Sonja M. Palomaki  
Mr. and Mrs.\* P. David Pappert  
Mike Payne and Barbara Johnson  
Wesley Pickard and  
Jeanette Studley  
Dr. Nathaniel Pitts  
Diane and Arnold Polinger  
Margaret J. Pollack  
Warren and Hallie Porter  
Gail Povar and Larry Bachorik  
Lutz Alexander Prager  
Jane Ellen Ramsey

Joe and Ginny Redish  
Deborah Remmers  
Charles Richardson  
June and Marvin Rogul  
Steven M. Rosenberg and  
Stewart C. Low III  
Barry and Joan Rosenthal  
Herbert and Nancy Rosenthal  
Mr. and Mrs. Arthur Rothkopf  
Dr.\* and Mrs. Harold H. Saunders  
Jean Schiro-Zavela and  
Vance Zavela  
Carol Schwartz  
Leslie Shapiro  
Matthew H. Shepard and  
James W. Johnson  
Joan and Eugene Shugoll  
Kathleen and Kerry Skeen  
Annelise and Robert H. Smith  
William Randolph Smith  
Sharon Steele  
Dr. Earl P. Steinberg and  
Claire E. Reade  
Patricia Stonesifer and  
Michael Kinsley  
Mr. and Mrs. Robert Surovell  
TAA Services, Ltd.  
Joanne Tornow and Neil Lehrer  
Judge and Mrs. James T. Turner  
Allen Unsworth  
Rear Adm. and  
Mrs. Sidney Wallace  
Virginia D. Weber  
Joan and Mark Weiss  
Richard and Susan Westin  
Patricia Page Williams  
Robert and Gwendolyn Williams

## LEAD

Anonymous (8)  
D. M. Abruzzo  
Kate Acuff and Ed Hess  
Marilyn and James Altman  
Diana Aviv and Sterling Speirn  
Laura and Mason Axford  
Michael Baker  
Paul and Jeanette Barkley  
Dr. and Mrs. John Barnes  
Roy V. Barnes and  
Mary A. Flanigan  
Nancy and John Barnum  
Michael Barrett and  
Danielle Beauchamp  
David and Janet Batlan  
Nan Beckley  
Brandy Besseau  
Lucille A. Bland  
Dennis and Shirley Bloomquist  
Dr. and Mrs. Gerald Borsuk  
Gary Bowden and Mark Ziomek  
Mr. Terrence J. Brown and  
Ms. Linda D. Whitlock-Brown  
Harold R. Bucholtz  
Lisa Burns and Henry Chamberlain  
Matt Butcher and Liz Pennisi  
David Carle and Deborah DeYoung  
Renee Carlson  
Louis and Karen Carson  
Stephen Case  
Jack Chiang  
Claudette Christian  
Francis and Terry Coates  
Beth and Ron Cogswell  
Ray and Mary Converse  
Kinshasha Holman Conwill  
Susan M. Crawford  
Beverly Cunningham  
George A. Dalley  
Mr. and Mrs. Floyd E. Davis, III  
Ms. Lorraine Day  
Deirdre Donahue and  
Jamie Dahlberg  
Patricia D'Orazio  
David Dunn  
Stewart and Loti Dunn  
James Ebbitt and Scott Derrick  
Ann Elliott  
Marjorie and Tony Elson  
Douglas Erwin and Wendy Wiswall  
Carol Faulb  
Nancy and Cary Feldman  
Phyllis S. Fleischaker  
Allan Friedman

Jean C. Fulton  
Jim and Lorrie Fulton  
Linda Gehr  
Richard Gervase and Stuart Delery  
Amy C. Gilbert  
Lynne and Bill Glikberg  
Dr. Donna M. Gollnick  
Michael C. Greenbaum  
Yvonne Griner  
Karen T. Grisez  
Dean Haas  
Jack E. Hairston, Jr.  
Don and Sue Haller  
Chris Harris  
Marianne Harwit  
Bert Helfinstein and  
Margaret Rodenberg  
John and Debra Howard  
Patricia Jackman and  
Stephen L. John  
William A. and Virgie H. Jones  
Lorna J. D. Jones  
Joyce Jordan  
John Keator and Virginia Sullivan  
Gary Kemp  
Dr. Sandra D. Key  
Mary Kimble  
Kenneth and Carol Doran Klein  
Caroline S. Klemp  
Sara Jo Kobacker  
Carl Koteff  
Ms. Jane Mary Kwass  
Richard and Cecilia Larkin  
Col. (Ret.) Richard and  
Alyssa Leatherman  
Thelma K. Leenhouts  
Steven Leinwand and  
Ann Lawrence  
Mary Ann Levant\*  
Roberta Levant\*  
Joan Lorr  
Pat and Steve MacIntyre  
Karen and Jack Mansfield  
Kenneth Marks, Jr.  
Doris Anne Martin  
Louis Mayo  
Mary McGann  
Patricia McMahon  
Dr. and Mrs. Allen W. Mead  
Stephen Meyer  
Lisa Mezzetti  
Lisa Miller  
MaryAnn Miller  
Mr. and Mrs. Thomas Moore  
Jeffrey Neal and Kevin Loeffler  
Sherry and Louis Nevins  
Shelia Newman  
C. Lynn O'Connell  
Michael and Cindy O'Kane  
Deborah Okon  
Michael and Kathleen Opincar  
Colonel Tommy T. Osborne  
David and Marina Ottaway  
William and Elsie Page  
Craig Palmer  
Doris Parker and Michael Spatz  
Antoinette Pavone  
Randy and Kathy Pherson  
Margaret Plank and Dave Souders  
Liz Purdy Porter  
Wendell and Kathy Primus  
Mr. and Mrs. Thomas J. Reckford  
David and Susan Reichardt  
Terry and Alan Rettig  
Betty Revelle  
Massimo and Marilou Righini  
Denise A. Rollins  
Nuhad Ruggiero  
Steven Sabat and  
Kathryn Waldman  
Jean Sammon  
Jo Ella Samp  
Ernest Schichler and John Murray  
Mr. and Mrs. Leonard and  
Celia Schuchman  
Richard and Rochelle Schwab  
Dr. and Mrs. Arthur Schwartz  
John Sheridan  
Colonel William E. and  
Helen G. Sherman  
Dr. and Mrs. Gene Simaitis  
Carl Wayne Smith and  
Michael Burke

Lynette R.F. Smith  
Pamela Brown Smith  
Janet W. Solinger  
Peter and Ann Tanous  
Drs. Steven and Sheila Taube  
Barbara Toohill  
Roberta K. Van Haeften  
Herbert W. and Elizabeth K. Ware  
Seth Waxman and Debra Goldberg  
Drs. Stephan and Ann Werner  
Jack and Sue Whitelaw  
Susan Wiener  
John Wingard  
C. Lawrence Wiser  
Ken and Dorothy Woodcock  
David and Julie Zalkind  
Jeff and Johanna Zinn

## SUPPORTING ROLE

Anonymous (29)  
Judith Agard  
Hunaina S. Ahmed Al Mughairy  
Kenny and Marleen Alhadeff  
Gloria Allen  
Lee Allen and Howard Walgren  
Amb. and Mrs. Frank Almaguer  
Richard Alperstein and  
Lenore Seliger  
Marilena Amoni and Don Ryan  
Britt Anderson  
Jacquelyn D. Argodale  
Ms. Virginia C. Armat  
Jean W. Arnold  
Thomas and Sharon Atkins  
Raymond D. Audet  
Elinor R. Bacon  
A. Baker  
Marjory and Peter Bankson  
Ann and Mal Barasch  
Dayle Bartholow and Jeff Pickard  
Richard and Jean Barton  
Carolyn and John Beck  
Rita Beier Bramer  
Susan and Don Bennett  
Jack and Sylvia Benoit  
Dava Berkman  
Geoffrey Berlin  
Peter and Ellen Berty  
Thomas J. Billy  
Richard and Eleanor Bochner  
Constance Bohon MD  
Vincent and Veronica Boles  
Mickey and Sally Bolmer  
Karen J. Bopp  
Ellen Bortz  
Randall A. Bowman  
Jan Boyce  
Nancy Weyl Bradley  
Steven Brady  
Randi and David Braverman  
Janet Bray  
Ann Breen  
Sandra Bresnahan  
Ms. Sally Brice  
Perry Brown  
Mr. and Mrs. Ronald K. Browning  
Rita Bruce  
Marian Bruno  
Candice C. Bryant  
Patricia Burke  
Avery Burns  
Donna M. Butts  
Sandra and Paul Byrne  
James Cafritz  
John Cahill  
Mr. and Mrs. James Callison  
Faye and Plater Campbell  
Joseph N. Cannon  
Fredric and Jane Cantor  
Barbara Carter  
Ms. Patricia Carter  
Mr. and Mrs. James Carty  
Michael Carty and Linda Brothers  
Ruth Carver  
Dorothy Cason  
Wallace Chandler  
Brian and Allayne Chappelle  
Rick and Niki Chavez  
Cheryl M. Chevalier  
Joy and Jerry Choppin  
Mr. and Mrs. John H. Clark  
Kenneth T. Cline  
Edward Cohen and



# THANK YOU - THE ANNUAL FUND

Charlene Barshefsky  
Nadine R. Cohodas  
W. Joseph and Karen Coleman  
Drs. Jack H. and Rita R. Colwell  
Drs. Houston and Mary Conley  
Lee S. Cooper  
Owen Costello  
Stephen T. Cramolini  
Janice Crawford  
John and Valerie Cuddy  
John and Isabella Cummings  
Woody Cunningham and  
Jessie Harris  
Philip and Joan Currie  
Linda Daniel  
Martin and Belle Davis  
Rock and Sabrina Davis  
Deanna K. Dawson  
Kathryn DeAngelis  
Lisa and Tony Delity  
Steven desJardins  
Walter B. Doggett III and  
Joanne Doggett  
Edward Donahue, III  
Molly Donovan and Barry Wepman  
Don Douglas and Carolyne Weil  
Joseph Duffey  
Carolyn L. Duignan  
Becky and Charlie Dukes  
Susan Duncan and Leo Fisher  
Michael and Mary Durr  
E.M. Edwards  
Cliff Elgarten and Marnie Walfront  
Brian and Sonja Elmer  
Tina Eskridge  
Ralph and Gwendolyn Everett  
Dr. Nancy Falk  
John Farrell  
Jack and Carol Feder  
Beth Feldman  
Mr. and Mrs. Edward W. Felton  
Mr. and Mrs. Greig Fields  
Lois Fields  
Joan Fina  
Mr. and Mrs. Harold Finger  
Jack L. Finglass  
Donale and Cathy Fogel  
Heather Foley  
Joanne Fort  
Harry Foxwell  
Graham Frank  
Karen L. French  
Pamela Friedman  
Bob and Martha Lee Fugate  
Bob and June Gallagher  
Paul Gamble  
Louis Gaudio  
Yvette B. Gilmore  
Virginia Giroux  
Mr. and Mrs. Alan and  
Hedda Gnaizda  
Maggie Godbold and  
Steve Bershader  
John M. Goodman  
Rhonda Goodman and  
Dorothy Moskowitz  
Debra and Chris Gordon  
Eloise Gore and Allen Hile  
Barbara and Tom Gottschalk  
Toni Govier  
Madi Green  
Maxine Green  
Sherry and Neil Green  
Jackie Greene  
Marilyn Greene  
Sally Gresham  
Christian Griffin  
Alfred and Lynne Groff  
Alan and Jackie Gropman  
Lois Gruendl  
Sue and Bruce Guenther  
Susan Gutches and Helen Ingalls  
Mr. Allen C. Haid and  
Ms. Sandra Cummins-Haid  
Robert Hall  
George Hanc  
Susan and Allen Hanenbaum  
David Hardy  
Joan Harvey  
Steven Hass  
Kathleen A. Hasse

Susan Hattan  
Laurence Hausman and  
Margaret R. Burks  
Doris Hausser  
Jerry Hawke  
Deborah Healey and  
Margaret Mohrmann  
Naomi and Jack Heller  
Ruth Herman  
Donald E. Hesse and  
Jerrilyn Andrews  
Harold L. Hickson  
Elsie Hillman-Gordon  
Richard and Pamela Hinds  
Donald and Diana Hirsch  
Theo Hodge  
Sallie L. Holder  
Earl-Rodney Holman  
Clarence G. Hoop  
Gerald and Harriet Hopkins  
Erika Horton  
Donald M. and Barbara S. Hoskins  
Lauren and Glen Howard  
Frances Hudson  
Drew Huffman  
Sidney and Carol Hurlburt  
Ann Ingram  
Kay Jacks  
Alan and Nadine Jacobs  
Lorna S. Jaffe  
Mr. and Mrs. Michael E. Jaffe  
Paul Jaikaran  
Ms. Sandra A. Jamula  
Anne Jardine  
Mr. and Mrs. Clifford L. Johnson  
Abby and Ronald Johnson  
Lucrecia Johnson  
Will Johnston  
Edward Jones  
Dr. and Mrs. Arnold Kaplin  
Jane C. Karpick  
Jody Katz  
Paul and Masako Kaufman  
Jackie Williams Kaye  
Carol King  
Janet King  
Rufus King III  
Pris and Bill Kirby  
Marilyn (Mickey) Klein  
Thomas Kopf  
Rosemarie and George Korphage  
Rev. Mary E. Kraus  
Eugene and Adeline Krizek  
Paul Lawrence  
Diane Lending and Art Thompson  
Dr. and Mrs. Randall J. Lewis  
Martin G. Lichtenstein and  
Sharon Rosendhal  
Carol Ann and Kenneth Linder  
Albert L. and Doris M. Lindquist  
Ace and Linda Lipson  
Robert-Gerald Livingston  
Cynthia Long  
Ronald C. Long  
Shirley Loo  
Kenneth Lowenberg  
Ron and Marilyn Lundquist  
Doris B. Mabrey  
Sasha Mabry  
Captain Lory Manning USN (RET)  
Phyllis and Philip Margolius  
Linda Marks  
David Martin  
Michelle Mason  
Winton Matthews, Jr.  
Russell Matthias  
Marlene Mayo  
Hans and Marianne Mayr  
Susan Hall McCannell  
Fred and Jeanne McCarroll  
Brenda McCoy  
J. Douglas McDowall  
Elizabeth Ann McGrath  
Jim and Rachel McGreevy  
Nancy McGuire  
Bernice McIntyre  
Mr. and Mrs. William McKaig  
John and Marie McKeon  
Michael McLeod  
Sarah and David McMeans  
Charles and Marilyn McMillion  
Dee McWilliams  
Tom and Terry Melo  
Dr. Florence K. Miller  
Margaret Miller  
Barbara Mintz  
Yvonne K. Moody  
Kent and Dale Morrison  
Charles & Jane Morse  
Helaine G. Morss  
JoAnn Mueller  
Jim and Ellen Myerberg  
Donald and Lynne Myers  
Hedy Nash and John Wetterau  
Elizabeth Neblett  
Mr. and Mrs. John Noble  
Caren Novick  
Susan Nunnally  
Hamda O'Brien  
Judy Olmer  
Joe Oppenheimer and  
Edith Fraser  
Catherine O'Reilly  
C and J Orza  
Ellen Parker  
Jane Passman  
Wanda D. Patrick  
Keith and Rhonda Patterson  
Kevin and Sherry Pearson  
Mary Pedigo  
Nthakoana Peko and Don Spicer  
Alan and Andrea Pendleton  
Anne E. Peret  
Charles and Annette Perry  
Randolph Perry and Nancy Lee  
Jeanne and Burnie Peters  
Mr. Gary Peterson  
Karen and Hugh Pettigrew  
Daniel Plekarski  
Beth Pile  
Dr. Gwendolyn W. Pla  
Barbara and Larry Poe  
Lance and Sheila Pohl  
Mr. and Mrs. John Pontius  
Toby Port and Jeffrey Ahl  
Pamela K. Porter and  
Terence P. Thornberry  
Anna Powell  
Jacqueline Powell Bailey  
Mary and Cedric Powell  
Marjorie Powell  
Ane Powers  
Bill Raabe  
Dr. Johnny Railey  
Janice Rasgus  
Ms. Linda Ravdin  
J. Paul and Diane Reason  
Leslie Reed  
Sandra Reed-Bryant  
Anna Marie Reeder  
Mr. Clyde Relick  
Catherine Remijan  
Maria Farese Rendine  
Mary E. Resnik  
Ann Richards  
Tommie Robinson  
Dr. Sheila Rogovin and  
Dr. Stewart Aledort  
Robin Anne Rojas  
John and Taryn Roman  
Bob Rose and Lauren Swartz  
Geri Rosen  
Gareth Rosenau  
Dr. and Mrs. Daniel Rosenblum  
Dr. Bernard and Louise Rostker  
Dr. Ted and  
Judge Barbara Rothstein  
George and Nancy Rubenson  
Al Russell  
Jeffery Russell  
Richard and Jane Rutherford  
Jane Ryan  
Barbara Sable  
Mr. and Mrs. John Sacchetti  
Stephen and Doreen Sanborn  
Lee Saunders  
Julia Lauder Sayles  
Lisa and Mark Schneider  
Eugene and Alice Schreiber  
Frederick and Peri Schuyler  
Peter Schwartz  
James Scott

Karren E. Scott  
Joan H. Searby  
Sandra and David Sellers  
Frederick and Jewel Senior  
James Shannon  
M. Pat and Bob Shapiro  
Stephanie Shipp  
Bobbi and Larry Shulman  
Kiya Sibley  
Hugh and Ruth Sickle  
Dr. and Mrs. Rubin Siegel  
Dr. and Mrs. Thomas G. Sinderson  
Mike and Patti Sipple  
Bernard and Mary Slosberg  
Blanche Smith  
Bobbi and Stan Smith  
Ida Fernanders Smith  
Margaret Smith  
Dr. Stuart Sotsky  
Cecile and James Srodes  
Christian Stallsmith and  
Deborah Clapp  
Dr. William and  
Mrs. Claudia Stiebel  
Donald R. and Dorothy T. Stone  
Jane O. Storm  
Aileen and Jack Sullivan  
Emil and Judy Sunley  
Dr. Harvey A. Sweetbaum and  
Mrs. Selma Sweetbaum  
Rick Tedesco  
Jacob Teitelbaum  
Elizabeth and Jerry Teles  
Dennis and Rosalind Thomas  
Gwen Thompson  
Barbara Tobias  
Juergen Tooren  
Darrell Totman  
Lois Trumbull  
Sheila Truxon  
Raymond and Marjorie Turgel  
Anne Carter Vaden  
Dr. Carolyn Peoples Veiga  
Eli Velder  
Susan and Jeff Vincent  
Beverly Walcott  
Mr. and Mrs. Bruce Wald  
Michael Waldman and Linda Coe  
Roger and Diane Warin  
Richard and Sally Watts  
Helene Weisz and  
Richard Lieberman  
Joseph and Rosemary Weller  
Ray and Rhoda Wharton  
John and Val Wheeler  
Janice White  
Greg and Mary Whiteman  
Daniel Williams  
Bernetta and Kevin Williams  
Lawrence Williams  
Rance R. Willis  
J. David Willson  
Mr. and Mrs. Kevin Wilshere  
Albertha Workman  
John and Beth Wright  
James Yenckel  
Annette and Colin Young  
J B Young  
Patricia N. Young

\* Deceased





# THANK YOU - INSTITUTIONAL DONORS

## OUR INSTITUTIONAL DONORS (as of October 18, 2016)

### OVATION CIRCLE



The Washington Post



National Capital Arts & Cultural Affairs Program/  
U.S. Commission of Fine Arts

### FOUNDER'S CIRCLE



PAUL M. ANGELL  
FAMILY FOUNDATION

Diane & Norman Bernstein Foundation  
The Morris and Gwendolyn Cafritz Foundation  
Share Fund

### BENEFACTOR'S CIRCLE



### LEADERSHIP CIRCLE



Anonymous  
The Theodore H. Barth Foundation, Inc.  
The Max and Victoria Dreyfus Foundation, Inc.  
Harman Family Foundation  
Venable Foundation

### PRESIDENT'S CIRCLE

Arent Fox LLP  
The Bernstein Companies  
The Boston Consulting Group  
CareFirst BlueCross BlueShield  
Central Parking System  
Dallas Morse Coors Foundation for the Performing Arts  
Discovery Communications  
The Meredith Foundation  
Northrop Grumman Corporation  
Alice Shaver Foundation  
Hattie M. Strong Foundation  
The Tower Companies & Abramson Family Foundation  
USAA Real Estate Company

### PRODUCER'S CIRCLE

701 Restaurant & the Knightsbridge Restaurant Group  
Amtrak  
Aranson LLC  
Boies, Schiller & Flexner LLP  
BP America  
Clark-Winchcole Foundation  
The Coca-Cola Company  
Comcast NBCUniversal  
Comcast XFINITY  
Dimick Foundation  
FirstEnergy Foundation  
Friends of Southwest DC  
Graham Holdings Company  
Mars Foundation  
MasterCard  
Ourisman Automotive of Virginia  
Catherine B. Reynolds Foundation  
Nora Roberts Foundation  
Rockwell Collins  
Saul Ewing, LLP  
Theatre Forward

### DIRECTOR'S CIRCLE

Bormel, Grice & Huyett, P.A.  
Davis / Dauray Family Fund  
The Edelman Love Group Realtors  
Enterprise Holdings  
Edington, Peel & Associates  
The Kiplinger Foundation  
Weissberg Foundation

### PLAYWRIGHT'S CIRCLE

Cabot Creamery  
Fisher Dachs Associates, Inc

We endeavor to provide a complete listing of all donors in the above categories. However, if your name is not listed, please contact the Development Department at 202-600-4177. We are also grateful to the thousands of other contributors to Arena Stage, whose names space will not permit us to print.

### Legend:

Ovation Circle \$100,000 and above;  
Founder's Circle \$50,000-99,999;  
Benefactor's Circle \$25,000-49,999;  
Leadership Circle \$15,000-24,999;  
President's Circle \$10,000-14,999;  
Producer's Circle \$5,000-9,999;  
Director's Circle \$2,500-4,999;  
Playwright's Circle \$1,500-2,499;  
Star \$1,000-1,499;  
Lead \$600-999;  
Supporting Role \$300-599.



# THEATER STAFF

Artistic Director ..... Molly Smith  
 Executive Director ..... Edgar Dobie  
 Founding Director ..... Zelda Fichandler  
 Founding Executive Director ..... Thomas C. Fichandler  
 (1915-97)

## ARTISTIC DEVELOPMENT

Deputy Artistic Director ..... Seema Sueko  
 Artistic Associate  
 and Casting Director ..... Amelia Acosta Powell  
 Literary Associate ..... Catherine Rosenberg  
 Dramaturg ..... Jocelyn Clarke  
 Resident Playwright ..... Ayad Akhtar  
 Directing Fellow ..... Miranda Haymon\*  
 Literary Fellow ..... Paul Adolphsen\*  
 Casting Fellow ..... David Olivarez\*  
 Commissions Writers ..... Bob Banghart,  
 David Henry Hwang, Rajiv Joseph,  
 Jacqueline E. Lawton, Mary Kathryn Nagle,  
 Aaron Posner, Sarah Ruhl, Georgia Stitt,  
 John Strand, Cheryl L. West  
 Playwrights' Arena Playwrights ..... Steven A. Butler, Jr.,  
 Patricia Davis, Joshua Ford, Liz Maestri,  
 David Mitchell Robinson

## PRODUCTION & OPERATIONS

General Manager ..... Ian Pool  
 Associate General Manager ..... Marissa LaRose  
 Company Manager ..... Clifford Hannon  
 Assistant Company Manager ..... Ellen White  
 General Management Coordinator ..... Alicia Sells  
 Company Management Fellow ..... Jay Fondin\*

## PRODUCTION

Production Manager ..... Joel M. Krause  
 Associate Production Manager ..... Karen O. Mayhew

## SCENIC

Technical Director ..... Natalie Bell  
 Senior Carpenter ..... Norman Lee  
 Charge Scenic Artist ..... Li Qiang  
 Carpenters ..... Mick Coughlan, Zachary Fullenkamp,  
 Craig Hower, Sean Malarkey, Frank Miller

## PROPERTIES

Properties Director ..... Monique Walker  
 Associate Properties Director ..... Lance Pennington  
 Property Carpenter ..... Michael Ritoli  
 Property Assistants ..... Marion Hampton Dubé,  
 Kyle Handziak  
 Props Artisan ..... Niell DuVal

## LIGHTS

Master Electrician ..... Christopher V. Lewton  
 Electricians ..... Scott Folsom,  
 John Rose-Caron, Paul Villalovoz  
 Lighting Fellows ..... Tyler Dubuc\*, Alexa Zankos\*

## SOUND

Sound Director ..... Timothy M. Thompson  
 Sound Technicians ..... Adam W. Johnson,  
 Lorraine Rhoden

## COSTUMES

Costume Director ..... Joseph P. Salasovich  
 Assistant to the Costume Director ..... Cierra Coan  
 Drapers ..... Carol Ramsdell, Steven Simon  
 First Hands ..... Lauren Allmeyer, Mallory Muffley  
 Master Stitcher ..... Noel Borden  
 Craftsperson ..... Deborah Nash  
 Wardrobe Supervisors ..... Alina Gerall, Alice Hawfield  
 Wigs, Hair and Makeup Supervisor ..... LaShawn Melton  
 Costume Fellow ..... Hiram Orozco\*

## STAGE MANAGEMENT

Stage Managers ..... Rachael Danielle Albert,  
 Marne Anderson, Kurt Hall, Kristen Mary Harris,  
 Martha Knight, Trevor A. Riley,  
 Christi B. Spann, Susan R. White  
 Stage Management Fellow ..... Niew Bharyaguntra\*

## INFORMATION SYSTEMS

Director of Information Systems ..... Charles Rogers  
 Associate Director of  
 Information Systems ..... Travis Armbuster  
 Tessitura Application Support ..... Rachel Schlaff  
 Help Desk Associate ..... Edward Wieland

## FACILITIES

Facilities Manager ..... Keith Brown  
 Maintenance Technicians ..... Lester McDonald Jr.,  
 Vincent Gregg, Jeyone Muhammad  
 Porter ..... Lawrence Wise  
 Stage Door Attendants ..... Ra'Chelle Carey,  
 Kay Rogers, LaShelle Saunders

## COMMUNITY ENGAGEMENT

Director of  
Community Engagement .....Anita Maynard-Losh  
Director of Education.....Ashley Forman  
School Programs Manager..... Rebecca Campana  
Partnership Manager ..... Medha Marsten  
Master Teaching Artist ..... Psalmayene 24  
Training Programs Manager .....Sean-Maurice Lynch  
Community Programs  
Coordinator ..... Matthew Reckeweg  
School Programs Fellow..... Lizzie Hughes\*  
Community Programs Fellow .....Kiana Davenport\*

## ADMINISTRATION

Chief Financial Officer.....Joe Berardelli  
Leadership Office Manager .....Alison Irvin  
Human Resources and  
Finance Associate..... Jay Chiang  
Senior Artistic Director Fellow .....Tara Moses\*  
Management Fellow ..... Tiana Bias\*  
General Counsel.....Fried, Frank, Harris, Shriver &  
Jacobson; Robbins, Russell, Englert,  
Orsek, Untereiner & Sauber, LLP

## BUSINESS OFFICE

Controller .....John Monnett  
Accounting and Payroll Manager ..... Joan A.S. Lada  
Accounting Associates ..... Larry Bright,  
Christopher Murk  
Auditors ..... Bormel, Grice & Huyett, P.A.  
Bond Counsel ..... Arent Fox LLP

## DEVELOPMENT

Chief Development Officer.....Holly K. Oliver  
Director of Strategic Advancement.....Dale Mott  
Senior Director of  
Individual Giving .....Kristen Mitchell  
Associate Director of  
Development Operations.....Maria Corso  
Director of Board and  
Donor Relations.....Anne Paine West  
Foundation  
Relations Manager ..... Hannah Fried-Tanzer  
Corporate Relations Manager..... Char Manlove-Laws  
Campaign Manager ..... Molly Goodman  
Membership Coordinator.....Melanie Heredia  
Development Coordinator .....Tricia Edwards  
Donor Relations  
Coordinator - Campaign .....Andrew Jacobs  
Development Assistant.....Claire Bancroft

## COMMUNICATIONS

Associate Executive Director and  
Chief Marketing Officer.....Khady Kamara

## MARKETING

Director of Marketing..... Neal Racioppo  
Digital Communications  
Coordinator .....Brieahn DeMeo  
Marketing Fellow ..... Erin Stevens\*

## PUBLICATIONS

Director of Publications.....Anna Russell  
Graphic Designer .....David Sunshine  
Jr. Graphic Designer .....Jeremy Hunter  
Website and New Media Manager ..... Ben Nolan  
Artwork Creation.....Nicky Lindeman  
Illustrators.....Montse Bernal, Nigel Buchanan,  
Charles Chaisson, Richard Martinez,  
Robert Parada, Paul Rogers, Sam Spratt,  
Brian Stauffer, David Sunshine, Mark Ulriksen

## MEDIA RELATIONS

Director of Media Relations .....Greta Hays  
Media Relations Fellow .....Kathlyn Silverman\*

## EVENTS

Director of Events and Rentals.....Kathleen Kelley  
Events and Rentals Coordinators..... Betsy O'Keeffe,  
Kaitlyn Sakry

## AUDIENCE SERVICES

Director of  
Audience Services .....Lindsey Wareing Pisani  
Audience Development  
and Group Sales Manager.....Alvin Ford Jr.  
Group Sales Associates.....Isaac Evans, Bria Hall  
Associate Director of  
Audience Services .....Holly Longstreth  
Managers of Sales Services .....Sabrina Clark,  
Sarah Hurst  
Assistant Manager of Sales Services .....Evan Crump  
Sales Associates.....Sam Abney, Maria Benzie,  
Nicole Cusick, Khatira Darvesh,  
Meg Glassco, Kathleen Hinman, Colin O'Bryan,  
Adriana Sosa, Randi Young  
House Managers.....Jody Barasch, Nichole McDavid,  
Christy Patti  
Visitor Services Assistant.....Chrystal Noelle Vaughan

\* Allen Lee Hughes Fellow



# MOBY DICK

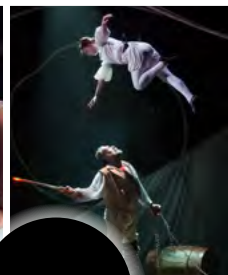
NOVEMBER 18 – DECEMBER 24, 2016

“A TRULY SUPERB ADAPTATION.”

— Chicago Tribune

ADAPTED AND DIRECTED BY **DAVID CATLIN** | FROM THE BOOK BY **HERMAN MELVILLE**  
A CO-PRODUCTION WITH **ALLIANCE THEATRE** AND **SOUTH COAST REPERTORY**

(L to R) Photos of Monica West, Raymond Fox, Javen Ulambayar, Kareem Bandealy, Jamie Abelson, Anthony Fleming III, Jamie Abelson and Anthony Fleming III, Christopher Donahue and Emma Cadd by Liz Lauren. Illustration By Ricardo Martinez.



**ORDER TODAY!**

202-488-3300  
**ARENASTAGE.ORG**

**arena**  
**stage**

the mead center  
for american theater