

2024/25 SEASON



# FAKE IT UNTIL YOU MAKE IT



APRIL 3 – MAY 4



## Amplifying artists of every age.

AARP celebrates artists over 50 of every form. Through our Brain Health work, we know that art keeps us mentally sharp, as it connects us and preserves our collective story. We're uplifting these dynamic artists who have mastered their craft in the areas of costume design, dance and hip-hop music.

**Nasha Thomas**

National Director,  
AileyCamp Master Teacher

**Ruth E. Carter**

Award-Winning  
Costume Designer

**Doug E. Fresh**

Hip-Hop Legend



Discover more today at  
[AARP.org/BlackCommunity](https://www.aarp.org/BlackCommunity)

# TABLE OF CONTENTS

- 5 Artistically Speaking
- 7 From the Executive Producer
- 8 Dramaturgy Note
- 11 Title Page
- 12 Setting/Cast/For this Production
- 13 Additional Credits
- 15 Bios — Cast
- 19 Bios — Creative
- 23 Bios — Arena Stage Leadership
- 25 Board of Trustees/Young Patrons Board
- 26 Thank You — Full Circle Society
- 27 Thank You — Individual Donors
- 33 Thank You — Institutional Donors
- 34 Theater Staff

## ARENA STAGE

1101 Sixth Street SW  
Washington, DC 20024-2461  
ADMINISTRATION 202-554-9066  
SALES OFFICE 202-488-3300  
arenastage.org

©2025 Arena Stage.

All editorial and advertising material is fully protected and must not be reproduced in any manner without written permission.

*Fake It Until You Make It* program book published April 3, 2025.

## PROGRAM BOOK STAFF

Ashton Beck,  
Director of Marketing & Communications

Ryan Impagliazzo,  
Associate Director of Marketing & Communications

Jenny Hwang,  
Senior Graphic Designer

Kristopher Ingle,  
Graphic Designer



Eric Stanton Betts and Brandon Delsid in *Fake It Until You Make It* at the Mark Taper Forum. Photo by Makela Yopez.



WIFI NETWORK:  
**ArenaGuest**

PASSWORD:  
**arenaguest**

## SHARE YOUR EXPERIENCE!



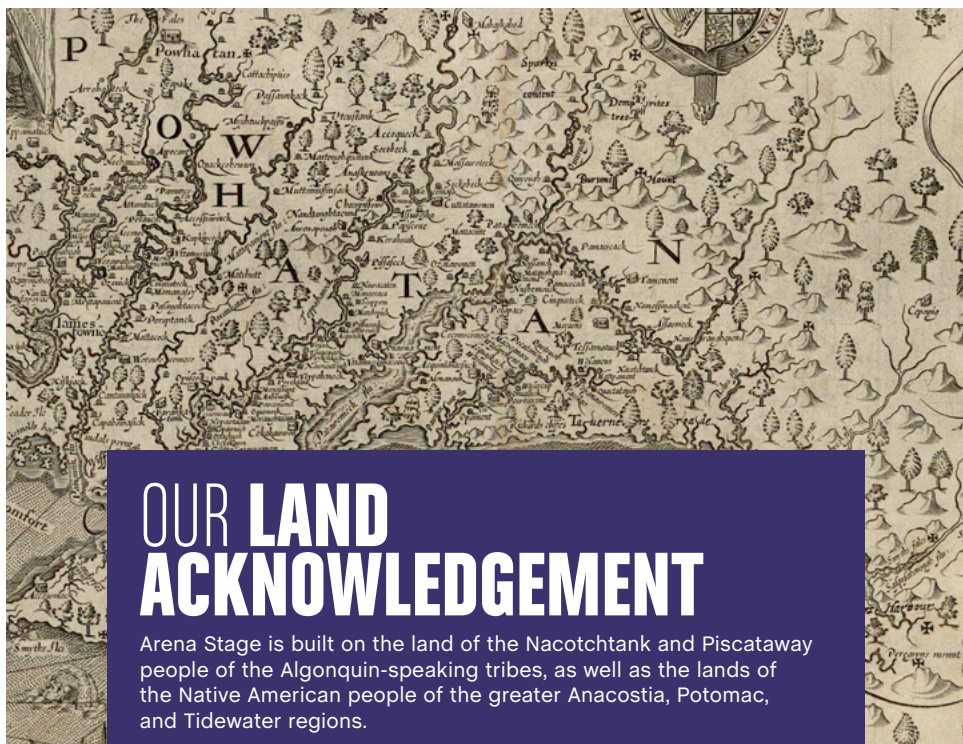
@arenastage

#ArenaStage #ArenaStageDC #ArenaFakeIt



# ARENA STAGE'S MISSION

Arena Stage is the voice of American theater resident in our nation's capital. Focused on American artists, our productions are innovative and representative of stories from across the country. We nurture new plays and reimagine classics. We celebrate our democracy and diversity through a multitude of voices in our productions and community engagement programs to inspire people to action. We produce all that is passionate, exuberant, profound, entertaining, deep and dangerous in the American spirit.



## OUR LAND ACKNOWLEDGEMENT

Arena Stage is built on the land of the Nacotchtank and Piscataway people of the Algonquin-speaking tribes, as well as the lands of the Native American people of the greater Anacostia, Potomac, and Tidewater regions.





## ARTISTICALLY SPEAKING

Welcome back to the theater, and happy spring! I'm thrilled to usher in cherry blossom season in DC with a play uniquely suited to this city. No community is better equipped (nor hungrier) for a parade of the never-ending folly of the non-profit sector than our deeply political, delightfully earnest, and occasionally dysfunctional one, and certainly, no city is more deserving of a laugh. Welcome to *Fake It Until You Make It*!

I'm thrilled to bring Larissa FastHorse's hilarious new play to our Kreeger Theater stage, fresh from a triumphant Los Angeles Center Theatre Group run. A member of the Sicangu Lakota Nation, Larissa is a brilliant satirist. In her newest work, *Fake It Until You Make It*, she delves into the truth of contemporary life through farce. The play, which details the ongoing tensions between intention and impact in the offices of N.O.B.U.S.H. and Indigenous Nations Soaring, is a mirror to our society, challenging us to consider the slippery slope from ambition to appropriation, and the mess that can ensue in claiming our own cultural identities. It asks us to reflect on who we are, what we owe our collective communities, and whether it's possible to dream forward and enact an authentic and inclusive world. Laughter is Larissa's tool, and she uses it to disarm our preconceived notions about ourselves and the world around us, breaking open our hypocrisy and our deeply human foibles in a way that allows us to receive their underlying lessons.

The characters in *Fake It Until You Make It* are a merry band, each grappling with the pressures of perfection that dominate contemporary life. Despite their absurdity, they are fully-dimensional and eerily recognizable, mirroring our own human experiences. Their misguided efforts reflect the colonizing power of external pressure that threatens to cheapen and restrain our quests for authenticity. Yet, amidst the chaos, the beating heart behind their work is unmistakable. As they wrestle with their imperfections, Larissa's play, artfully directed by Michael John Garcés, invites us into the complexities and contradictions of blind ambition, self-actualization, identity, and service in the world today.

Together, in laughter, as we navigate slammed doors, mistaken identities, and never-ending hijinks on our national stage, we can all relish the joy (and absurdity) of our continued effort to live our values and be recognized fully and authentically.

Enjoy the ride!

**Hana S. Sharif**  
Artistic Director



Arena Stage  
Washington, DC

**CLARK**  
CONSTRUCTION

**Proudly Shaping  
the Local Landscape**



## FROM THE EXECUTIVE PRODUCER

Ah, the farce. The word is really in play these days. Where who knows what and who else doesn't know what is funny. Where the lengths people go through to hide what they know are ridiculous and absurd—and funny. Where a mistaken identity is humorous. It feels liberating to be able to laugh at the foibles of well-meaning people.

Larissa FastHorse has illuminated a variety of unavoidable and universal truths in *Fake It Until You Make It*. Humor, in such short supply these days, helps us to strike behind the facade and get to the heart of a matter. I appreciate this opportunity very much to be part of the echo that laughter relies upon while being asked to consider deep human questions about identity, culture, appropriation of culture, and love of pets.

Arena's vision statement is to galvanize the transformative power of theater to understand who we are as Americans. A key component of our mission is to produce all that is passionate, exuberant, profound, entertaining, deep, and dangerous in the American spirit. We stand behind our vision and mission with determination, rigor, and compassion. We appreciate our right and independence to do so!

Core in Arena's values is welcoming all voices—on stage, backstage, in the audience. Program titles and words help to define this value. Believe it or not, the value can sometimes be hard to define. Welcoming voices means embracing differences—on the outside and inside. Different opinions can sometimes be as challenging to navigate as external differences. There is room in American society for healthy debate and for people to change their mind, but only if we value and protect the opportunity.

Our play today raises philosophical questions about identity. I bet you heard that people are complex, always more than can be seen. Art is complex, always more than a title or a blurb. No one should be defined by their worst moments—or their best. It's the everyday moments—the happy, sad, frustrated, dedicated—that make up a person. It's the arc of the story, the colors of the palate, the range of the sounds, that make up a piece of art. Some pieces of art are for today, right now. Some are loving looks to the past or critical backwards glances with lessons learned. Some are not understood when they first appear, only to be understood many years later.

I have ranged philosophical with today's note. Humor grants me this ability to remind myself, and perhaps you, of the core value at the heart of our institution and of our collective purpose. I am proud of Arena and Center Theatre Group for raising up Native voices, and I appreciate having you here to join us. Laughing together is a wonderful way to build community.

Thank you for being part of the echo a good laugh needs!

Edgar Dobie  
Executive Producer  
President of the Corporation



# IF ONLY: FARCE & SOCIAL FANTASIES

By **Otis Ramsey-Zöe**, Literary Manager

Illustrations by Kristopher Ingle

"If your heart is in your dream  
No request is too extreme."

— Leigh Harline & Ned Washington,  
"When You Wish Upon a Star"

**FARCE** is perhaps best known by its conventions. We know that we are in the presence of a farce when we encounter robust physical humor, constant entrances and exits with characters just missing one another, comic infidelity, figures forced to hide to evade discovery, mounting lies about identity, escalating pretense, and action at a seemingly breakneck pace. Indeed, successfully executing farce requires precise timing and sharp choreography. Technical characteristics are not the only way to spot a farce. Intrinsically, farce is a genre about living out our fantasies and is noted for representing a world that allows social outrage without consequences. Farce is a genre of outrage, exaggeration, distortion, and reckless abandon. At least vicariously, it lets us release some of the antisocial fantasies we keep pinned up inside since it is a dramatic form that centers wishes for revenge, aggression, violence, disruption, and offense. Said another way, according to Eric Bentley, "farces show the disguised fulfillment of repressed wishes."

In general, the world view in comedy suggests that the world inherently, or an individual's life at a particular point, does not work. As such, comic works tend to propose or explore ways of making the world work better, often through great effort and imagination. At core, in a farce, characters tend to have one wish which if they could make come true would remedy the ills they see in the world. Each character's wish always involves some version of drawing one's internal reality into the outside world. What characters want appears to be a great distance from what they have or what's available to them. Farce is marked by characters having immense distances between their inner desires and outer realities. The discrepancy between surface and substance is bridged by pretense. Pretending becomes a way of practicing fulfillment. In this way, innate in farce is the idea that figures can fake it in order to make it a reality.



The potential for a lie to become or create truth is a sticky proposition, which is one reason farce usually launches into heightened and exaggerated realities that are akin to dreams. In dreams, everything we dream is true, but those truths take on symbolic, metaphoric, and alternative forms. In dreams, every mask holds a truth, even when these truths are wishes we otherwise avoid. Another reason why masquerade and truth go hand-in-hand in farce is because there are always seemingly insurmountable barriers between what we have versus what we would like, who we are versus who we would like to be, and the world as it is versus the world as it ought to be. Nothing real can change things; make-believe is the only thing that can.





Dakota Ray Hebert, Brandon Betts, Eric Stanton Carmelo in *Fake It Until You Make It* at the Mark Taper Forum. Photo by Makela Yopez.





**ARENA STAGE**

**HANA S. SHARIF**, ARTISTIC DIRECTOR | **EDGAR DOBIE**, EXECUTIVE PRODUCER

IN A CO-PRODUCTION WITH CENTER THEATRE GROUP  
PRESENTS THE WORLD-PREMIERE PRODUCTION OF

**FAKE IT  
UNTIL YOU  
MAKE IT**

**BY LARISSA FASTHORSE**  
**DIRECTED BY MICHAEL JOHN GARCÉS**

SET DESIGNER  
**SARA RYUNG CLEMENT**

COSTUME DESIGNER  
**E.B. BROOKS**

LIGHTING DESIGNER  
**TOM ONTIVEROS**

SOUND DESIGNER  
**JOHN NOBORI**

FIGHT DIRECTOR  
**EDGAR LANDA**

CASTING DIRECTOR  
**KIM WILLIAMS**

STAGE MANAGER  
**DAVID S. FRANKLIN\***

ASSISTANT STAGE MANAGER  
**MIRIAM E. MENDOZA\***

ASSISTANT STAGE MANAGER  
**SAMANTHA WILHELM\***

Support for *Fake It Until You Make It* is provided by

**AARP**, Daniel W. Hamilton, and  
The Molly Smith Fund for New Work.

Special thanks to **Boston Consulting Group**.

*Fake It Until You Make It* is an Edgerton Foundation Commission that was awarded by Center Theatre Group.  
And was first produced by Center Theatre Group/Mark Taper Forum in a co-production with Arena Stage in Los Angeles, CA, 2025.

# SETTING

Present-day Los Angeles

# CAST

(in alphabetical order)

Theo .....	NOAH BEAN*
Mark .....	ERIC STANTON BETTS*
River .....	AMY BRENNEMAN*
Krys.....	BRANDON DELSID*
Wynona .....	SHYLA LEFNER*
Grace .....	BURGANDI TREJO PHOENIX*

# UNDERSTUDIES

Grace —	JENNIFER BOBIWASH*
Theo —	JOSH BYWATER*
River —	ALEISHA FORCE*
Wynona —	CAROLINA HOYOS*
Mark, Krys —	KENNY RAMOS*

\*Members of Actors' Equity Association

# FOR THIS PRODUCTION

Hair and Makeup Designer.....	JANELL TURLEY
Intimacy Coordinator .....	SASHA SMITH
Production Assistant (LA) .....	LINDA CRISTAL UREÑA
Production Assistant (DC) .....	KYLA S. MERMEJO-VARGA
Script Assistant .....	EMMA BUSCH
Writing Assistant (LA) .....	CHRISTOPHER CID
Stage Carpenter .....	MAX MARSHALL
Props.....	ERICA FEIDELSEIT, SIMON SINNREICH
Light Board Operator .....	KELSEY SWANSON
Lighting Assistant.....	CHRISTIAN HENRRIQUEZ
Audio Engineer .....	ALEX CLOUD
Second Audio.....	LUCIEN REUBENS
Wardrobe Supervisor .....	SABRINA SIMMONS
Wardrobe .....	NICOLE HIEMENZ, ARIEL HULVEY
Wigs, Hair, and Makeup Supervisor .....	JAIME BAGLEY



# INDIGENOUS ARTISTS

- Mural Art, *Searching the Galaxy* ..... **JESSA CALDERON** ([jessacalderon.com](http://jessacalderon.com))
- Mural Art, *Sky Coyote, The Angelino*, and *Antelope Valley Continues to Bloom* ..... **RIVER GARZA** ([rivergarza.com](http://rivergarza.com))
- Mural Art, *Uŋčí Makhá's Shawl* ..... **MARLENA MYLES** ([marlenamyl.es](http://marlenamyl.es))
- Logo Office Art, *Navajo Fairy Series*, *Corn Pollen Fairies*, and *Moonlit Reader* ..... **LORENZO YAZZIE** ([@hozho\\_life](https://twitter.com/hozho_life))
- Tribal Force* comic book art ..... **COURTESY OF JON PROUDSTAR AND GENE JIMENEZ**
- Deer Woman*, an *Anthology* cover art ..... **JONATHAN THUNDER**
- "Sweetheart Dancers" photography ..... **COURTESY OF ADRIAN STEVENS**
- Rooted in tradition, bound by love. In every stitch, every step, and every gaze, we honor those who came before us and pave the way for those yet to come. Two-Spirit, unstoppable, unbreakable. This is more than a dance.*
- Various Art Pieces ..... **ROBERT MESA** ([robertimesa.com](http://robertimesa.com))
- TY DEFOE**



# SONG CREDITS

- I Hope You Know ..... **SUPAMAN AND ASHLEY HALL**
- Enthocide ..... **SUPAMAN AND WALKING BUFFALO**



# SPECIAL THANKS

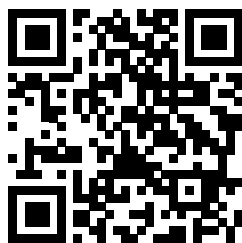
Scenery provided by F&D Scene Changes Ltd.



Thank You For Joining Us!  
Thank You For Joining Us!  
Thank You For Joining Us!  
Thank You For Joining Us!

# WE WANT TO HEAR FROM YOU!

SCAN THE  
QR CODE  
TO SHARE  
YOUR THOUGHTS



## TAKE OUR SURVEY!

Please take a few minutes to tell us  
about your experience at the theater.

VOICES  
of  
NOW

FESTIVAL

2025

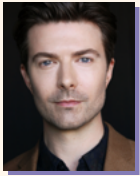
SATURDAY, MAY 10

EXPERIENCE YOUNG ARTISTS HIGHLIGHTING  
IMPORTANT QUESTIONS ABOUT THEIR COMMUNITIES THROUGH  
ORIGINAL, AUTOBIOGRAPHICAL PERFORMANCES

[ARENASTAGE.ORG/VOICESOFNOW](https://arenastage.org/voicesofnow)



# CAST



**NOAH BEAN** (*Theo*) has performed in many New York and regional theaters; most notably, originating roles in David Henry Hwang's Pulitzer Prize-nominated *Yellowface* at The Public Theater, as well as Jordan Harrison's Pulitzer finalist *Marjorie Prime* at Playwrights Horizons. He has worked at such theaters as The New Group, Vineyard Theatre, SoHo Playhouse, Mark Taper Forum, The Old Globe, Geffen Playhouse, South Coast Rep, Bay Street Theater, Huntington Theatre (where he was nominated for both Elliot Norton and IRNE awards for his portrayal of Bo in William Inge's *Bus Stop*), among many others. He has extensive film and television credits, including series regular roles in the Emmy-nominated *Damages*, *Nikita*, *12 Monkeys*, *The Endgame*, and Amazon's upcoming series *Ballard*.



**ERIC STANTON BETTS** (*Mark*) is a mixed BIPOC performer. He originated the role of Mark at the Mark Taper Forum/Center Theatre Group in Los Angeles. His work extends across commercial, fashion, theater, and film. He is also a writer, having finished his first full-length feature film, a romcom called *Holiday Down Under*. Eric stars in the upcoming Tyler Perry film *Joy Ridge*, as well as the queer horror *Martinez, Margaritas and Murder!*. Eric got to work alongside Sarah Drew (*Grey's Anatomy*) in the western feature by Sony, *Birthing Outlaw*. He's also graced the stage of the Hollywood Bowl in *Kinky Boots*, a show that he also performed nationwide and internationally in parts of Asia. Eric is most excited to connect to his native community through this show. Love to Gabe, Dexter, Astro, and the rest of his family. "Thanks for being in my corner." Follow him [@standstootall21](#)



**AMY BRENNEMAN** (*River*) is a founding member of the Cornerstone Theater Company, where her roles included Juliet in *Romeo and Juliet*, Natasha in *Three Sisters*, and Clytemnestra in *The Oresteia*. Other theater: CSC Rep, Lincoln Center Theater, Williamstown Theatre Festival, Yale Rep, and American Repertory Theater. She starred in the world premiere of the Pulitzer Prize-nominated *Rapture*, *Blister*, *Burn* (Playwrights Horizons, Geffen Playhouse) and *Power of Sail* opposite Bryan Cranston (Geffen Playhouse). She played Miriam of Nazareth in the world premiere of *Galilee*, 34 (South Coast Rep) and starred in *The Sound Inside* (Pasadena

Playhouse), which was named one of the year's best performances by the *Los Angeles Times*. Amy co-created, wrote, and starred in *Mouth Wide Open* (The Yard, American Repertory Theater) and *Overcome* (The Yard, Cotuit Center for The Arts). Amy created, executive produced, and starred in *Judging Amy* (multiple Golden Globe, Emmy, and SAG nominations) based on the work of her mother, the Honorable Judge Frederica Brenneman. Other television: *NYPD Blue* (SAG Award), *Frasier*, *Heartbeat* (executive producer), *Goliath*, *Veep*, *Private Practice*, *The Leftovers*, *Tell Me Your Secrets*, *Shining Girls*, and *The Old Man*. Film credits include *Casper*, *Fear*, *Daylight*, *Heat*, *Your Friends and Neighbors*, *The Jane Austen Book Club*, *Words and Pictures*, *Nine Lives*, *Things You Can Tell Just by Looking at Her*, and *Mother and Child*.



**BRANDON DELSID** (*Krys*) is an actor originally from Fresno, CA. He can currently be seen starring in Amazon Prime's *This is Me...Now* musical alongside Jennifer Lopez and Ben Affleck. A student of the Stella Adler Studio of Acting NYC and The Groundlings, this spring he'll be a recurring guest star on the second season of the hit HBO series *The Rehearsal* with Nathan Felder. Later this year he'll appear in the action fantasy film *June and John* by director Luc Besson (*The Fifth Element*, *Taken 1, 2, and 3*). Previous TV credits include the final season of NBC's *New Amsterdam* as Dove and Peacock's *The Date Whisperer*. He can be seen in commercial campaigns for Amazon, CeraVe, Fidelity, White Claw, HBO, Toyota, and Netflix. Follow [@brandondelsid](#) for more fun.



**SHYLA LEFNER** (*Wynona*) Arena Stage debut! Shyla was most recently seen in the Broadway revival production of *Our Town* at the Barrymore Theatre. She is part of the original cast and garnered a 2024 Obie Award for her work in the production of

The 1491s' *Between Two Knees*, following a run at the Oregon Shakespeare Festival, Yale Rep, McCarter Theatre, Seattle Rep, and culminating at NYC's Perelman Performing Arts Center. Selected regional credits include *Bulrushers* (McCarter & Berkeley Rep); *The Cymbeline Project*, *Alice in Wonderland*, *Henry V*, *The Way the Mountain Moved* (OSF); *Manhatta* (OSF & Yale Rep); *Bernhardt/Hamlet*, *The Door You Never Saw Before* (Geffen); *Fairly Traceable*, *Off the Rails*, and *The Frybread Queen* (Native Voices). Some film and television credits include *Polar Sun*, *Point of Origin*, *Grace*, *Whatever It Takes*, and *Fashion House*. Proud graduate of the University of Southern California. [@shylalefner](#)

STILL THE WORLD'S  
MOST POPULAR MUSICAL

# Les Misérables



The Kennedy Center

**JUNE 11–JULY 13 • OPERA HOUSE**



**Kennedy-Center.org**

The ONLY OFFICIAL WEBSITE of the Kennedy Center  
(202) 467-4600

Groups 20+ (15 for *Shear Madness*  
and 10 for Washington National Opera)  
call (202) 416-8400

For all other ticket-related customer  
service inquiries, call the Advance Sales  
Box Office at (202) 416-8540.

THANKS TO OUR SPONSORS

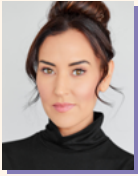
Theater Presenting  
Sponsor



The DRUTZ FAMILY  
Fund for Musical Theater

The Blanche and Irving Laurie  
Foundation



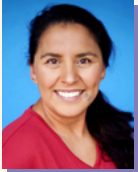


## BURGANDI TREJO PHOENIX

(Grace) is an accomplished storyteller of Yaqui/Yoeme heritage, deeply committed to advancing authentic representation and greater inclusion of the BIPOC community in entertainment. Her work spans film, television,

video games, and stage, with notable credits including Emmy-nominated series such as *Spirit Rangers* (Netflix) and *The Loud House* (Nickelodeon). Burgandi has also lent her voice to popular games like *Cookie Run: Kingdom* and *Merlin* (DevSisters); and recently appeared as a top-of-show guest star on *NCIS*. In addition to her acting roles, Burgandi is a member of the Television Academy, the brand ambassador for Talentboom, and a former host of *The Curve*, a Casting Frontier YouTube series where she provided insights into the industry and empowered aspiring talent.

@burgandiphoenix



## JENNIFER BOBIWASH

(u/s Grace) is an Ojibway actor, playwright, and director from the Mississauga First Nation. Selected regional credits include *Manahatta* at Yale Rep and *Between Two Knees* at McCarter Theatre and Seattle

Rep. She has appeared in world premieres of *Fairly Traceable* and *Bingo Hall* at Native Voices and *Devilfish* and *Whale Song* at Perseverance Theatre. On screen, she has appeared in *Magnum P.I.* and *Rutherford Falls*. She is the Artistic Associate at Native Voices, dedicated to championing Native American stories. As a playwright, she was a 2024 National Playwrights Conference Semi-Finalist and a Season 21 Volt Lab writer with Company One Theatre. She was also an Artist in Residence at UC San Diego's Thurgood Marshall College. @bobiwash



## JOSH BYWATER (u/s Theo)

is thrilled to be making his Arena Stage debut with such a lovely group of artists. LA theater includes *Smile* and *Cult of Love* at IAMA Theatre. Regional credits include *Fat Pig*, *One Arm* (Steppenwolf); *Cicada* (Route

66); *All My Sons* (Hubbard Hall); *The Story* (Goodman); *The Crucible* (OAT); *Nocturne*, *The Aliens* (Opera House Arts); among many others. Television credits include *Betrayal*, *Crisis*, *Chicago Med*, *Chicago Fire*, *Utopia* (Amazon), *61st Street* (AMC/CW), and *Somebody Somewhere* (HBO). Films include *The View from Tall*, *Our Father*, *Never Not Yours*, and *Widows*. He is an ensemble member with IAMA Theatre. He studied at The School at Steppenwolf.



## ALEISHA FORCE (u/s River)

is a Texas native and former high school speech teacher (Go Cats!). Favorite roles: *Antony and Cleopatra* (Virginia Shakes); *Normalcy* (Theatre East); *Fat Pig* (Dallas Theater Center); *Hand to God* (Coachella Valley); *ROE*,

*Human Interest Story* (Fountain Theatre); and, most recently, *Summer, 1976* (Lean Ensemble). TV: *This Is Us* (NBC), *For All Mankind* (Apple TV+), *In The Cut* (Bounce TV), and *Monster Season 3* (Netflix). Education: MFA/SMU, The Groundlings, and UCB (NYC).



## CAROLINA HOYOS (u/s Wynona)

is a DC-born nonbinary Two Spirit Afro-Indigenous (Quechua-Kichwa) Latine actor, writer, director, and musician. Recent stage credits: *Macbeth*, *The Comedy of Errors*, *Romeo and Juliet*, *Strings*, and solo commissions from The Peace

Studio and Celebration Theatre. Carolina also directed the multi-cam feature film/theater hybrid *Indigiqueer Identity: Reclaiming Past, Present, and Future* and *Birthday Brunch*, both for Celebration Theatre. Regional credits include work with Woolly Mammoth, Kennedy Center, and Oregon Shakespeare Festival next up this summer. TV: *Magnum P.I.*, *Jimmy Kimmel Live!*, *Too Old to Die Young*, *Blaze's Amazing Race*. An award-winning audiobook narrator of 50+ titles, Carolina voices multiple characters in *Street Fighter*, *Fallout 76*, *Reverse: 1999*, amongst others. Seven of Carolina's songs feature in *The Great Salish Heist*. Awards: CalCreative Artist-In-Residence, Peace Studio Creative Peacebuilder, West Hollywood Directing Artist, LA Skins TV Writer Lab Fellow, official LA County Artist Roster.

carolinahoyos.com



## KENNY RAMOS (u/s Mark, u/s Krys)

is from the Barona Band of Mission Indians and grew up on the Barona Indian Reservation. They are an ensemble member at Cornerstone Theater Company where their favorite work includes *The Native Nation*

*Trilogy*. Regional credits include work with Native Voices, Perseverance Theatre, Woolly Mammoth, Denver Center, Seattle Rep, Oregon Shakespeare Festival, and The Kennedy Center, where they assistant directed and performed in *We the Peoples Before*, an interdisciplinary stage production that featured Native artists from across the country. Most recently, Kenny appeared in the *Peter Pan* National Tour. TV: *Spirit Rangers* (Netflix). Awards: TCG Fox Fellowship, First Peoples Fund Fellowship, Yale Mellon Arts Fellowship, La Jolla Playhouse Artist Residency, LA City Council NAHM Honoree. Education: BA in American Indian Studies, UCLA. <3mom @krayramos



**"The Angelino"**

Artwork by River Garza  
acrylic, marker, spray paint, color pencil,  
and chalk pastel

[www.rivergarza.com](http://www.rivergarza.com)

## Unlocking Potential.

Boston Consulting Group (BCG) is a global management consulting firm and the world's leading advisor on business strategy.

We partner with clients from the private, public, and not-for-profit sectors in all regions to identify their highest-value opportunities, address their most critical challenges, and transform their enterprises.

For more information, please visit **[bcg.com](http://bcg.com)**.

**BCG**



# CREATIVE

**LARISSA FASTHORSE** (Sicangu Lakota Nation) (*Playwright*) is a MacArthur Fellow and cofounder of Indigenous Direction, the leading consulting company for Indigenous art. Larissa was the first known female Native American playwright on Broadway with *The Thanksgiving Play*, which has now had over 300 productions. Her revised book of *Peter Pan* is currently on tour around the country. Additional plays include *The Native Nation Trilogy*, *For The People*, and *Fancy Dancer*. She is developing work for many theaters including The Public, Second Stage, and Yale Rep. Larissa is a professor of practice at Arizona State University.

**MICHAEL JOHN GARCÉS** (*Director*) is a Los Angeles-based director and playwright, and a professor of practice at Arizona State University. Directing credits in Washington, DC, include *the just and the blind*, /peh-LO-tah/ (The Kennedy Center); *The Arsonists*, *Oedipus el Rey* (Woolly Mammoth Theatre Company); and *District Merchants* (Folger Theatre). Other credits include productions at Mixed Blood, The Guthrie Theater, Theatre Horizon, and City Theatre Company. Michael is the former artistic director of Cornerstone Theater Company, where he directed new plays by many writers including Naomi Iizuka, Mark Valdez, Juliette Carrillo, Alison Carey, Lisa Loomer, and three by Larissa FastHorse: *Wicoun*, *Native Nation*, and *Urban Rez*. He is the recipient of the Doris Duke Artist Award, Princess Grace Statue, and SDC President's Award.

**SARA RYUNG CLEMENT** (*Set Designer*) is a Minneapolis-based set and costume designer. Scenic design credits in DC include *Henry IV, Part 1* at the Folger. Her Off-Broadway costume design includes *Golden Shield* (Manhattan Theatre Club), *Somebody's Daughter* (Second Stage Uptown), and *Fruiting Bodies* (Ma-Yi). Regionally, she designed the world premieres of Lucas Hnath's *A Doll's House, Part 2* and Lauren Yee's *Cambodian Rock Band* (South Coast Repertory, La Jolla Playhouse, and Oregon Shakespeare Festival). Other regional credits include Boston Lyric Opera, Guthrie Theater, Portland Center Stage, Alley Theatre, Denver Center, Geffen Playhouse, Pasadena Playhouse, Dallas Theater Center, Seattle Repertory, and others. Sara teaches set design at University of Minnesota, Twin Cities. She is a graduate of the Yale School of Drama and Princeton University. Website: [sararyungclement.com](http://sararyungclement.com) Instagram: [@sararyung](https://www.instagram.com/sararyung)

**E.B. BROOKS** (*Costumer Designer*) Credits include *Off the Rails*, *Manahatta* (Oregon Shakespeare Festival); *The Legend of Georgia McBride* (2018 Ovation and Los Angeles Drama Critic Circle Award), *Mysterious Circumstances*, *Bad Jews*, *Wait Until Dark*, *Good People* (Geffen Playhouse); *Sovereignty* (Marin Theatre Company); *Winter Bear Project*, *Franklin, Will Inc.*, *They Don't Talk Back* (Perseverance Theatre); *Sweetland*, *Invisible Cities* (The Industry); and *Hit The Wall* (LA LGBT Center). Native Voices: *Pure Native*, *Bingo Hall*, *Stand-Off at HWY #37*, *Bird House*, Playwrights Retreat 2013-2020 as design respondent for over 21 original works by indigenous writers. In addition to stage, E.B. also designs for film, television, commercial, and music video. E.B. has taught at USC, CalTech, and Willamette University. Member of USA 829 and CDG 892. BFA: UMCP. MFA: CalArts.

**TOM ONTIVEROS** (*Lighting Designer*) centers his work on social justice, diversity, and equity for underrepresented communities. He is Chair of the Theatre Arts Department at the University of La Verne. Credits include design at Center Theatre Group, Oregon Shakespeare Festival, Utah Shakespeare Festival, American Repertory Theater, Berkeley Repertory, Cornerstone Theater Company, Perseverance Theatre, Arizona Theatre Company, Opera Theatre of St. Louis, Native Voices, East West Players, South Coast Repertory, Pasadena Playhouse, Geffen Playhouse, La Jolla Playhouse, Hong Kong Cultural Centre, and the Hungarian National Theatre. Awards and nominations include *The Exonerated* (Lucille Lortel Award), *My Barking Dog* (LA Drama Critics Circle Award), *The House in Scarsdale* (LA Drama Critics Circle nomination), *Shiv* (Stage Raw nomination), *Lady Day at Emerson's Bar & Grill* (Ovation nomination), and *Completeness* (Ovation nomination). [cargocollective.com/tomontiveros](http://cargocollective.com/tomontiveros)

**JOHN NOBORI** (*Sound Designer*) is a California-based sound designer, composer, and ensemble member of Cornerstone Theater Company. His work was recently heard in Baltimore Center Stage's production of *Everything That Never Happened*. Other recent credits include the Geffen Playhouse's production of *The Ants* and Pasadena Playhouse's production of *Sanctuary City*. BA: University of California, Irvine.



THE STAGE IS SET. HOST YOUR NEXT PRIVATE EVENT IN THE

# EMPEROR DINING ROOM



*Philippe*  
by Philippe Chow



Official Restaurant Partner of Arena Stage



Scan For Private  
Dining Guide

635 Wharf St SW, Washington, DC 20024 | 202.601.8888 | [PhilippeChow.com](http://PhilippeChow.com)



# CREATIVE

**EDGAR LANDA** (*Fight Director*) is making his Arena Stage debut. Center Theatre Group credits include *2:22 A Ghost Story*, *Alma*, and *Valley of the Heart*. Regional: Tennessee Shakespeare Company, Geffen Playhouse, San Diego Rep, South Coast Repertory, The Wallis, The Getty Villa, Shakespeare & Company, Boston Court Theatre. He has choreographed mayhem for many of Los Angeles' intimate theaters. Edgar serves on the faculty of the USC School of Dramatic Arts. Edgar is a proud supporter of the Los Angeles intimate theater community. [www.edgarlanda.com](http://www.edgarlanda.com)

**KIM WILLIAMS** (*Casting Director*) served as Vice President of Casting at Disney Television Studios, casting the award-winning *Genius: MLK/X*. Her standout independent credits include the upcoming *The Late Night Creep*, the iconic *Martin*, *Girlfriends*, and Tyler Perry's *Diary of a Mad Black Woman*. A champion for emerging talent through HBO Access, Kim also serves on prestigious boards, David Geffen School of Drama at Yale, NFMLA, and the welcome committee for Tarell Alvin McCraney at Geffen Playhouse.

**DAVID S. FRANKLIN** (*Stage Manager*) Center Theatre Group highlights include *Bandido!*, Baz Luhrmann's *La Bohème*, *Art*, *Romance*, *The Cherry Orchard*, *Curtains*, *The History Boys*, *Bloody Bloody Andrew Jackson*, *Two Unrelated Plays* by David Mamet, *Parade*, *Bengal Tiger at the Baghdad Zoo*, *The Lieutenant of Inishmore*, *God of Carnage*, *Red*, *Vanya and Sonia and Masha and Spike*, *Bent*, *A View From The Bridge*, *Zoot Suit*, *Archduke*, *Head of Passes*, *Linda Vista*, *A Play Is a Poem*, *King James*, *A Transparent Musical*, *Green Day's American Idiot*. Los Angeles Theatre Center in its heyday from 1985–1990. Pasadena Playhouse since 1989 and where he had the pleasure of stage managing their 2023/24 Season! New York: Public Theater. Tours: Europe—*Quotations from a Ruined City*, *Law of Remains* (with Reza Abdoh's Dar a Luz company).

**MIRIAM E. MENDOZA** (*Assistant Stage Manager*) is thrilled to be joining the Arena Stage team for the first time. Originally from El Paso, Texas, she moved to California where she received her MFA in Stage Management from the University of California, Irvine. Some Los Angeles credits include world premiere of *Fake It Until You Make It*, world premiere of *A Transparent Musical* (Center Theatre Group—Mark Taper

Forum); *Jelly's Last Jam*, *Inherit the Wind*, world premiere of *One of the Good Ones* (Pasadena Playhouse); world premiere of *Alma* (CTG—Kirk Douglas Theatre); and *The Secret Garden* (CTG—Ahmanson Theatre). Miriam is a company member of New Swan Shakespeare Festival and has worked for the Walt Disney Company's Imagination Campus. Thanks to Abel and family for their support!

**SAMANTHA WILHELM** (*Assistant Stage Manager*) is thrilled to return to Arena Stage for another exciting show! She recently served as Assistant Stage Manager on Sarah Silverman's *The Bedwetter – A New Musical*. After graduating from the University of Mary Washington, Sam moved to DC and has been freelancing full time at theaters such as The Kennedy Center, Ford's Theatre, Shakespeare Theatre Company, Round House Theatre, and Signature Theatre. Some highlights of her career have been the pre-Broadway tryout of *Come From Away*, *Ragtime* at Ford's Theatre, and *King Lear* starring Patrick Page at STC. Sam has been a proud Actors' Equity Association member since 2018. Love to MJEKA et al.

**CENTER THEATRE GROUP**, one of the nation's preeminent arts and cultural organizations, is Los Angeles' leading not-for-profit theatre company, which, under the leadership of Artistic Director Snehal Desai, Managing Director / CEO Meghan Pressman, and Producing Director Douglas C. Baker, programs the Mark Taper Forum and the Ahmanson Theatre at The Music Center in Downtown Los Angeles, and the Kirk Douglas Theatre in Culver City. Center Theatre Group is one of the country's leading producers of ambitious new works through commissions and world premiere productions and a leader in interactive community engagement and education programs that reach across generations, demographics, and circumstances to serve Los Angeles. Founded in 1967, Center Theatre Group has produced more than 700 productions across its three stages, including such iconic shows as *Zoot Suit*; *Angels in America*; *The Kentucky Cycle*; *Biloxi Blues*; *Twilight*; Los Angeles, 1992; *Children of a Lesser God*; *Curtains*; *The Drowsy Chaperone*; *9 to 5: The Musical*; and *Bengal Tiger at the Baghdad Zoo*. [centertheatregroup.org](http://centertheatregroup.org)



# PENDRY

WASHINGTON DC – THE WHARF

## Contemporary Luxury

Polished comfort. Modern edge.  
A new tradition of luxury hospitality.

PENDRY.COM | 202 843 1111

ENJOY THE PERFORMANCE FROM THE COMFORT OF ANY SEAT.

**CLOSED CAPTIONING  
AT YOUR  
FINGERTIPS**


AVAILABLE STARTING APRIL 11



**DOWNLOAD THE FREE GALAPRO APP TODAY!**

Arena Stage can also provide devices for use during the performance at Visitors Services. Availability subject to change.

FOR MORE INFORMATION, VISIT [ARENASTAGE.ORG/ACCESSIBILITY](https://arenastage.org/accessibility),  
EMAIL [ACCESS@ARENASTAGE.ORG](mailto:ACCESS@ARENASTAGE.ORG), OR CALL 202-486-3300

Arena Stage's Arts Accessibility initiatives are sponsored by  **exelon**.

# ARENA LEADERSHIP

**HANA S. SHARIF** (*Artistic Director*) has enjoyed a multi-faceted theater career, including roles as an artistic leader, director, playwright, and producer with a specialty in strategic and cross-functional leadership. Hana began her professional career as an undergraduate student at Spelman College. From 1997 to 2003, Hana served as the co-founder and Artistic Director of Nasir Productions, a theater dedicated to underrepresented voices challenging traditional structure. Hana joined the Tony® Award-winning regional theater, Hartford Stage, in 2003. During her decade-long tenure at Hartford Stage, Hana served as the Associate Artistic Director, Director of New Play Development, and Artistic Producer. Hana launched the new play development program, expanded the community engagement and civic discourse initiatives, and developed and produced Tony®, Grammy, Pulitzer, and Obie Award-winning shows. Starting in 2012, she served as Program Manager at ArtsEmerson, a leading world theater company based at Boston's Emerson College. During her tenure at ArtsEmerson, Hana launched an Artists in Residency program, led a research program assessing barriers to inclusion across the region, and leveraged her regional theater experience to freelance produce for smaller theater companies looking to expand and restructure their administrative teams. Hana was Baltimore Center Stage's Associate Artistic Director from 2014 to 2019 and was the architect of the innovative CS Digital program: a platform that pushes the boundaries of traditional theater and looks at the nexus point between art and technology. Her other achievements at Baltimore Center Stage included prototyping the Mobile Unit focused on historically underserved audiences, strengthening community engagement, producing multiple world and regional premieres, and helping to guide the theater through a multi-million dollar building renovation and rebranding effort. Hana became the first Black woman to lead a major regional theater in 2018 when she was named the Augustin Family Artistic Director of The Repertory Theatre of St. Louis. During her tenure at The Rep, Hana guided the organization through a strategic alignment, revolutionized the New Works program, expanding access to underserved communities, and centering equity and anti-racism as the organization's foundational values. Hana holds a BA from Spelman College and an MFA from the University of Houston. Hana is the recipient of USITT's 2023 Distinguished Achievement Award, Spelman's 2022 National Community Service Award, the 2009-10 Aetna New Voices Fellowship, EMC Arts Working Open Fellowship, and Theatre Communications Group (TCG) New Generations Fellowship. Hana is a founding member of The Black Theatre Commons (BTC). She serves on the board of directors for the TCG, BTC, and the Sprott Family Foundation.

**EDGAR DOBIE** (*Executive Producer*) Born in Vernon, British Columbia, a village next to the Rocky Mountains (three years after Arena had its first performance in 1950), I am one of five brothers raised by my Dad Edgar, a mechanic and small businessman, and Mom Connie, a telephone operator and union organizer. I am the only Dobie to make a career in theater. Luckily for me, drama was an arts elective I was offered at the tender age of 12 so I hung up my hockey skates and joined the drama class, led by teacher Paddy Malcolm and her fledgling Powerhouse Community Theater after school. By the time I graduated from high school, we volunteers had built ourselves a 200-seat, fully equipped theater on its own piece of land in the center of town and found a sold-out audience for the full season of plays we had on offer. That experience taught me so many lessons about the power of theater to foster collaboration and share meaningful stories, as well as the public values that attach themselves to building a safe place where everyone is welcome. All those lessons served me well as a managing leader and producer both sides of the border and both sides of the commercial and non-profit theater divide. Arriving here in Southwest with my good wife Tracy and our daughter Greta Lee in 2009 makes me feel like I am well-equipped to do a good job for you all. I am honored to have been recognized for my service to, and leadership of, the Washington, D.C.-area theater community as a recipient of Theatre Washington's inaugural Victor Shargai Leadership Award in 2022.

This theater operates under an agreement between the League of Resident Theatres and Actors' Equity Association.



The actors and stage managers are members of Actors' Equity Association, the Union of Professional Actors and Stage Managers in the United States.



The scenic, costume, lighting and sound designers in LORT theaters are represented by United Scenic Artists, Local USA-829 of the IATSE.



The Director and Choreographer are members of the **STAGE DIRECTORS AND CHOREOGRAPHERS SOCIETY**, a national theatrical labor union.

Arena Stage is a constituent of the Theatre Communications Group (TCG), the national organization for the American theater.





# In service of those who serve

Boeing is grateful to service members and their families for their dedication and we are proud to support the Voices of Now Military Ensemble at Arena Stage and their efforts to tell more military-connected stories.

Learn more at [boeing.com/community](https://boeing.com/community)



# BOARD OF TRUSTEES

## CHAIR

Catherine  
Guttman-McCabe

## IMMEDIATE PAST CHAIR

Decker Anstrom

## VICE CHAIRS

Michele G. Berman  
Deborah E. Bowles  
Jeffrey M. Busch  
Susan Carter  
Celandra Deane-Bess  
Edgar Dobie  
Kristen Donoghue  
David Fisher  
Stephenie Foster  
Rick Froehlich  
Nicholas Goad  
Sue Henry  
Vicki J. Hicks  
Alethia Jackson  
David B.H. Martin  
Richard A. Newman  
Tiffany Sanchez  
Hana S. Sharif  
Mignon Smith

## HONORARY TRUSTEES

Jim Abdo  
Ashok Bajaj  
Joanne Barker  
Judith N. Batty  
Sander Bieber  
Steven R. Bralove  
Susan Haas Bralove  
Eric Braverman  
Joseph P. DiGangi  
John Edelmann  
Elliot Feldman  
Nancy M. Folger  
Natwar Gandhi  
Patti Herman  
Judy Lansing Kovler  
Mark Levine  
Ronald A. Paul M.D.  
Terry R. Peel  
Beverly Perry  
Lucia Riddle  
Ilene Rosenthal  
Raymond Sczudlo  
David Bruce Smith  
Richard W. Snowdon  
Sheila Stampfli  
Margaret Tomlinson  
Michele P. Toth  
Shawna Watley

## TRUSTEES

Jan Adams  
Andrew R. Ammerman  
Linda A. Baumann  
Anthony Coley  
Jeri Epstein  
Richard Feinstein  
Raymond Janvier  
Dr. Donald Wallace Jones  
Ricki Kanter  
Danny Korengold  
Daphne Kwok  
Elissa Leonard  
John Lynham  
B. Thomas Mansbach  
Jill McGovern  
David E. Shiffrin  
Michael S. Steele  
Karen Zacarias

## LIFE TRUSTEES

Lee G. Rubenstein  
Beth Newburger Schwartz

## YOUNG PATRONS BOARD TRUSTEE

Victoria Clark Hunter

## EMERITUS TRUSTEES

John M. Derrick  
Arlene and Robert Kogod  
David O. Maxwell  
Joan P. Maxwell

## CORPORATE OFFICERS

**PRESIDENT/EXECUTIVE PRODUCER**  
Edgar Dobie

**ARTISTIC DIRECTOR**  
Hana S. Sharif

**TREASURER**  
Judy Leventhal

**SECRETARY**  
Alison Irvin

# YOUNG PATRONS BOARD

The Arena Stage Young Patrons Board seeks to strengthen and support the future of American theater at Arena Stage. The Young Patrons Board supports the artistic mission of Arena Stage by being active ambassadors to the community and arranging opportunities for people under 40 years old to engage with the theater.

## MEMBERS

Michael F. Baylis II  
Julie Alderman Boudreau  
Dr. Adrienne Brown  
Michelle Brown  
Justine Casselle  
Dr. Alexandria Edwards  
Shoshana Golden  
Whitney Hubbard  
Linda Irizarry

Lucrecia Johnson  
Ashley Lawrence  
Lauren Pate  
Sasha Pierre-Louis  
Emily Rouse  
Hillary Stemple  
Michael Walker

## CHAIR

Victoria Clark Hunter

# ARENA STAGE LEGACY GIVING ADVISORY COUNCIL

The Arena Stage Legacy Giving Advisory Council includes current and former trust and estate attorneys, financial advisors, and wealth managers. The Council serves as a resource, sounding board, and consultative body that enhances the professional development expertise of Arena Stage and helps build enthusiasm for legacy gifts for the theater. We are so grateful to the Council members for their service:

**Edward Jay Beckwith**,  
private wealth attorney,  
Partner, BakerHostetler

**Debbie Bowles**\*, CFP®,  
retired wealth manager,  
Wells Fargo Advisors

**Mara Bralove**, CFP®, family  
wealth advisor, The Bralove  
Group at Morgan Stanley

**Celandra Deane-Bess**\*,  
CFP®, Senior Vice  
President, Private Client  
Advisor, Bank of America  
Private Bank

**John Lynham, Jr.**\*, estate  
planning attorney,  
Principal, Offit Kurman

**Aimee Griffin, Esq., LLM**,  
estate planning attorney,  
President of the Association  
of Black Estate Planning  
Professionals and Principal,  
Life & Legacy Counselors

**Anna Katherine "A.K." Moody**,  
J.D., LL.M., private wealth  
strategist, BNY Wealth

**Lisa McCurdy**, estate  
planning attorney, Managing  
Partner, The Wealth  
Counselor, LLC, and CEO,  
Defining Legacy Group, LLC

**Richard "Dick" W. Snowdon**\*,  
retired estate planning  
attorney

*\*Arena Stage Trustee or  
Honorary Trustee*

# ARENA STAGE'S PLANNED GIVING PROGRAM



Arena Stage is deeply grateful to those individuals who secure the future of our theater through gifts made in their wills, trusts, or by beneficiary designation. Your generosity ensures we can continue to challenge, educate, and entertain audiences, preserving our commitment to excellence in theater nationally and internationally for generations to come.

We are especially grateful for those who have participated in our Legacy Match, where current donors match your new or increased legacy commitment, costing you nothing now to provide both current and future support.

If you are interested in learning more about the Legacy Match and joining the Full Circle Society, please get in touch with Maya Weil, CAP®, at (202) 600-4158 or [mweil@arenastage.org](mailto:mweil@arenastage.org).

The following are members as of March 13, 2025

## MEMBERS

Anonymous (11)  
Esthy\* and Jim Adler  
Dr. Bill Santford Ashley  
Elinor R. Bacon  
Linda A. Baumann  
Nan Beckley  
Mary Bender  
Sue Benson  
Diane Boehr  
Deborah E. Bowles  
Susan and Steven Bralove  
Dr. Robert and Mary Jo Brenner  
Bonnie\* and Jere Broh-Kahn  
Louise Budelis  
Donald Burch, III  
James C. Burks and Dr. Bette Jane Pappas  
Anne L. Buzalski  
John P. Cahill  
Ellen MacNeille Charles  
Donald J. and Anita P. Cowan  
Captain Joan Darrah and Ms. Lynne Kennedy  
Martin Alan "Marty"\* and Belle Negrin Davis  
Joseph P. DiGangi  
John Edelmans and Jeffrey Love  
Vivian B.\* and Lisa D. Eggers  
Barbara B. Ehrlich  
Jeri and Gary Epstein  
Isaac Evans  
Skip and Laurette Farmer  
Nancy M. Folger  
Gary P. Fontaine  
Catherine F. and James F.\* Fort, Sr.  
Larry Franks and Ellen Berelson  
Becky Fredriksson  
Dr. Helene C. Freeman  
Arlene Friedlander  
Rick and Carol Froehlich  
Steven Garron  
Susan and Gary Gladstone  
Jon K. Gossett and Alex Urdaneta  
Bob Gronenberg  
Catherine and Christopher Guttman-McCabe  
Rita and Wilbur Hadden  
Chris Harris  
Betty Hawthorne  
Dr. JC Hayward  
Vicki J. Hicks  
Richard and Pamela Hinds

Sallie L. Holder  
Lauren\* and Glen Howard  
Ann Ingram  
David Insinga and Robert McDonald  
Thomas Jesulaitis and Barrie M. Seidman  
James Johnson and Matthew Shepard  
Drs. Susan and Perry Klein  
Dr. Seth A. Koch and Barbara Bellman Koch  
Patricia and John Koskinen  
Justin Latus  
Thelma K. Leenhouts  
Herb and Dianne Lerner  
Carol Ann and Kenneth Linder  
John and Patricia Long  
John and Lenora Lynham  
Sandra L. Mabry  
Alison Masters MacTavish  
Wells R. McCurdy  
Alfred Munzer and Joel Wind  
LaVerne G. Naughton  
Paul and Nancy Newman  
Marina and David Ottaway  
Laura Peebles  
Amy Phillips  
Robert Pincus  
Michael and Penelope Pollard  
Mr. and Mrs. Thomas J. Reckford  
Paul Rose  
Richard Schwartz\* and Beth Newburger Schwartz  
Larry Shaw and Richard Freitag  
David E. Shiffrin  
Mark and Merrill Shugoll  
Mike and Patti Sipple  
Leonard Sirota, Eileen Ivey and Rachel Sirota  
Molly Smith and Suzanne Blue  
Star Boy  
Dick and Katie Snowden  
Sheila A. Stampfli  
Aileen and Jack Sullivan  
Terri L. Tedford  
Helene Toiv  
Margaret L. Tomlinson  
Maya Weil  
Val and John Wheeler  
Alexander and Michelle Zajac  
Pamela Zitron and Jacob Gallun

## BEQUESTS AND GIFTS IN REMEMBRANCE

Anonymous (2)  
Estate of Dr. and Mrs. Clement C. Alpert  
Estate of J. Alton and Cynthia Boyer  
Estate of H. Max and Josephine F. Ammerman  
Estate of Jan Ellen Balkin  
Estate of Audrey J. Barnett  
Estate of Harry J. Boissevain  
Estate of Henrietta T. Braunstein  
Estate of Dorothy A. Bunevich  
Estate of Mary Lou Calene  
Estate of Patricia Carroll  
Estate of Albert Chaiken  
Estate of Judith Claire  
Estate of Helen G. Coddling  
Estate of Marcus Cohn  
Estate of Israel and Augusta Convisser  
Estate of Camille Cook  
Estate of Robert D. Davis Jr. and Henry J. Schalizki  
Estate of Mr. William E. Faragher  
Estate of Zelda Fichandler  
Estate of Donald H. Flanders  
In Memory of Helen W. and Felix E. Geiger  
Estate of Ann Gibbons  
Estate of Ezra Glaser  
Estate of George Grizzard  
Estate of Margaret M. Hansen  
Estate of Giselle Hill  
Estate of Joan E. Kain  
Estate of Margot Kelly  
In Memory of Jean Russ Kern and Jeannette G. Kern  
Estate of Gladys Kessler  
Estate of Herbert A. Lindow  
Estate of LaRue R. Lutkins  
Estate of Jeannette Murphy  
Estate of Marianne R. Phelps  
Estate of Suzy Platt  
Estate of Judy Lynn Prince  
Estate of Ms. Jane Rissler  
Estate of Toni A. Ritzenberg  
Estate of Graine Robinson  
Estate of Hank Schlosberg  
Estate of Eugene Schreiber  
Estate of Helga Tarver  
Barbara R. Walton Endowment Fund for New Playwrights  
Estate of Eric Weinmann  
Estate of Frankie and Jerry Williamson

THANK YOU FOR LEAVING YOUR LEGACY AT ARENA STAGE

# INDIVIDUAL DONORS

Arena Stage gratefully acknowledges the many individuals and families who support the theater's work by contributing to the Annual Fund. These gifts make it possible for the theater to continue presenting high-quality productions and innovative education programs that strengthen the community in which we live.

For more information on the benefits of becoming an Annual Fund contributor, please call the Development Department at 202-600-4177.

The following are members as of March 13, 2025.

## OVATION CIRCLE

Anonymous (1)  
Decker Anstrom and  
Sherry Hiemstra  
Margot Kelly\*  
Gladys Kessler\*  
Arlene and Robert Kogod  
Judy Lynn Prince\*  
The Toni Ritzenberg Fund  
for Educational and  
Community Outreach  
Programs at Arena Stage  
Tiffany Sanchez and Reg  
Brown

## FOUNDER'S CIRCLE

Andrew R. Ammerman  
Susan and Steven Bralove  
Rick and Carol Froehlich  
B. Thomas Mansbach  
Reinsch Pierce Family  
Foundation by Lola C. Reinsch  
Beth Newburger Schwartz  
and Richard Schwartz\*

## BENEFACTOR'S CIRCLE

Anonymous (1)  
Joanne Barker and the  
JAKE Foundation  
Linda A. Baumann  
Michele and Allan Berman  
Deborah Bowles  
Kristen Donoghue and Jon  
Hacker  
Pam and Richard Feinstein  
Bonnie Feld  
Drs. Elliot J. Feldman and  
Lily Gardner Feldman  
Mr. and Mrs. David Fisher  
Henock Gebreamlak and  
Nicholas Goad  
Chris and Catherine  
Guttman-McCabe  
Daniel W. Hamilton  
Sue Henry and Carter Phillips  
Daniel Korengold and  
Martha Dippell  
Herb and Dianne Lerner  
The Revada Foundation of  
the Logan Family  
David and Martha Martin  
Ilene and Steven Rosenthal

Peggy and David Shiffrin  
Mr. and Mrs. Richard W.  
Snowdon  
Sheila Stampfli

## LEADERSHIP CIRCLE

Anonymous (1)  
Janice Adams  
Jeff Busch  
Susan E. Carter  
Anthony Coley  
Celandra Deane-Bess  
Edgar and Tracy Dobie  
Jeri and Gary Epstein  
Stephenie Foster  
Larry Franks and Ellen  
Berelson  
Virginia McGehee Friend  
Vicki J. Hicks  
Alethia Jackson  
Raymond Janvier  
Ricki and Joel Kanter  
Daphne Kwok  
John and Lenora Lynham  
Dr. Jill E. McGovern  
Richard and Janice  
Newman  
Melanie and Larry\*  
Nussdorf  
Craig Pascal and Victor  
Shargai\*  
Mr. and Mrs. Robert P.  
Pincus  
Thalia Sinnamon in memory  
of Lyn Sinnamon  
Hon. Michael Steele  
Karen Zacarias and Rett  
Snothery

## PRESIDENT'S CIRCLE

Erin and Derek Arrison  
Eric Braverman and Neil  
Brown  
Ellen MacNeille Charles  
Vivian B.\* and Lisa D.  
Eggers  
Evan Henschel  
Patti and Mitchell Herman  
Thomas Jesulaitis and  
Barrie Seidman  
Richard Johnson  
Sheldon Katz

Mark T. Lewellyn  
Nancy and Dan Longo  
The Robert and Natalie  
Mandel Family Foundation  
R. Lucia Riddle  
William and Linda Rule  
Leonard Sirota and Eileen  
Ivey  
Peggy and Alec\* Tomlinson  
Joseph and Linda Young

## PRODUCER'S CIRCLE

Anonymous (1)  
Keith and Cella Arnaud  
Tom and Loretta Beaumont  
Nan Beckley  
Sharon Bennett MD  
Judy and Peter Blum Kovler  
Foundation  
Bonnie C. Carroll and Roy  
Cooper  
Richard H. Cleva  
John and Linda Derrick  
Joseph P. DiGangi  
Kathy and Jody Dreyfuss  
John Edelmann and Jeff  
Love  
Meg and John Hauge  
Donald E. Hesse and  
Jerrilyn Andrews  
Judy Honig and Stephen  
Robb  
David Insinga and Robert  
McDonald  
Dr. Donald Wallace Jones,  
Dr. Betty Jean Tolbert  
Jones and Tracey Tolbert  
Jones  
Dr. James and Deborah  
Karesh  
Caroline S. Klemp  
Ryan E. Merkel  
Ray Olson  
Janis Reed and Jack Requa  
Judi and Richard Sugarman  
Aileen and Jack Sullivan  
Suzanne Thouvenelle and  
Dennis Deloria  
Virginia D. Weber

## DIRECTOR'S CIRCLE

Anonymous (2)  
Jim and Mai Abdo  
Friend of Arena  
Dr. and Mrs. C. Wrandle  
Barth  
Judith N. Batty  
Lucille A. Bland  
Sander M. Bieber and Linda  
E. Rosenzweig  
Richard and Eleanor  
Bochner  
Constance Bohon MD  
David and Judy Bonior  
Jere Broh-Kahn  
Blain and Peg Butner  
William Caldwell and  
Michele Toth  
Gail Chambers and Scott  
Baker  
John Chester  
Debbie and Adam Cohen  
Beth Cunningham and  
David Wolfe  
James and Dorothy Dake  
Belle N. Davis in memory of  
Martin "Marty" Davis  
Trudy Fleisher  
Bill and Linda Garvelink  
Woolf Gross  
Carol and Bill Gross  
Susan B. Haight  
Laura Hart  
Paul R. Henderson  
Richard and Pamela Hinds  
Theo W. Hodge Jr., MD and  
Frederick Eugene Taylor,  
Jr., AIA  
John and Anne Holman  
Whitney Hubbard  
Cal and Barbara\* Klausner  
Barry Kropf  
Jean and John Lange  
Thelma K. Leenhouts  
Mark Levine and Sara  
Imershein  
Caroline Lewis  
Sam and Ellen  
John and Trish Long  
Abby Mandel  
Vicky Marchand  
Steve Mayer and Vera Oye\*  
Yaa-Anna

## CONTINUE SUPPORTING THE ARTS LEAVE A LEGACY HERE AT ARENA STAGE

Everyone needs an estate plan to ensure their assets benefit the people and causes they value the most. Please consider leaving a gift in your will or designating Arena as a beneficiary of your retirement plan or Donor Advised Fund to help future generations enjoy theater. If you have already included Arena, let us know so we can include you in the Full Circle Society.

For more information, contact **Maya Weil, CAP®**, Arena's Gift Planning Specialist at 202-600-4158 or [mweil@arenastage.org](mailto:mweil@arenastage.org)



Today is the day to  
inspire, delight  
and amaze.



We're proud to support Arena Stage and the joy you bring to our community every day.

[pnc.com](https://pnc.com)



©2022 The PNC Financial Services Group, Inc. All rights reserved. PNC Bank, National Association. **Member FDIC**  
CON PDF 0618-0106



# INDIVIDUAL DONORS

Richard and Erin Mills  
David Montgomery  
Marina and David Ottaway  
James T. Parson, Jr.  
Toni and Ronald Paul  
Laura Peebles and Ellen  
Fingerman  
Ann and Terry R. Peel  
Mazel Pernel  
Mr. Michael Pollard and  
Mrs. Penelope Pollard  
Franklin D. Raines and  
Denise Grant  
Mary Ann Re  
Nancy Regan  
Jill and Rick Robinson  
Margaret Ann Ross  
Trina and Lee Rubenstein  
Blair and Sally Ruble  
Jo Ella Samp  
Jeff and Ellen Sandel  
Jean Schiro-Zavela and  
Vance Zavela  
Raymond and Deborah  
Sams Sczudlo  
McAdo Shuler, Jr.  
Dr. and Mrs. Gene Simaitis  
Dr. and Mrs. Harvey  
Sweetbaum  
Keith and Jeanette  
Thackrey  
Barbara Toohill  
Mary Vavrina  
Shawna Watley  
Glenn Westley and Jeanne  
Holzgrefe  
Jaana Whitehead  
Bill and Terry Witowsky  
Jon and Sandra Wilton  
Richard and Leslie  
Wojciechewicz  
Deborah and David Yaffe  
Jane Yanulis  
Judy and Leo Zickler

## PLAYWRIGHT'S CIRCLE

Anonymous (5)  
General Clara Adams-Ender  
Lloyd Alderman Boudreau  
Garland Allen  
The Estate of Dr. and Mrs.  
Clement C. Alpert  
Dean Amel and Terry  
Savala  
Robert C. and Elissa B.  
Bernius  
Peter and Ellen Berty  
Joe and Sue Bredekamp  
Michelle Brown  
Candice C. Bryant  
Susan and Dixon Butler  
William and Kathleen Carey  
Dr. Myla Carpenter  
Justine Casselle  
Lisa I. Cholmondeley  
Lynne H. Church  
Jeremy and Stefanie Cohn  
Karen and Joseph Coleman  
Wilson Compton  
Valerie and John Cuddy  
Nancy Dawson  
Cynthia J. Decker  
The Charles Delmar  
Foundation  
Dr. Alexandria Edwards  
Dr. Gloria J. Edwards  
Dr. James Elzy and Mr.  
Francis O'Malley  
The Farmer Family  
Geraldine Feaster and  
Calvin Bethea  
Lorraine Fleming and Harry  
Parrish  
Mr. Gary Fontaine  
Robert and Carole  
Fontenrose  
Ellen Fox MD

Mr. and Mrs. Davis R.  
Gamble Jr.  
Lenue and Barbara  
Gilchrist  
Eileen M. Gleimer  
Amnon and Sue Golan  
Gregg H. S. Golden  
Sally W. Gresham  
Chris Harris  
Patricia Harvey  
Ms. Margaret Hennessey  
Martin and Nene Hill  
Lauren\* and Glen Howard  
Victoria Clark Hunter  
Arthur Hyland and Suzanne  
Jenkins  
Linda Irizarry  
John Iwaniec and Tracy  
Gray  
Lucrecia P. Johnson, Esq.  
John Keator and Virginia  
Sullivan  
Tuke and Pierce Klemmt  
Leslie S. Kogod  
Ashley J. Lawrence  
Carrie and Howard  
Langsam  
Stuart and Brock Lending  
Jim and Sharon Lowe  
Lorraine and Craig Martin  
C. Wakefield Martin and  
Paula S. Thiede  
Mark and Marsha Mazz  
Susan Hall McCannell  
Steve and Sylvia Moore  
Martha Newman  
Sheila and Ford Newman  
Frank and Linda Nutter  
R. Frances O'Brien and  
Stephen Flott  
Kay A. Oliver, Ph.D.  
Joe Oppenheimer and  
Edith Fraser  
Anne Paine and Fowler  
West  
Lauren Pate  
Howard and Dorothy  
Pedolsky  
Judy Perry, Col (USAF  
Retired)  
Randy and Kathy Pherson  
Paula and William Phillips  
Sasha Pierre-Louis  
Dr. and Mrs. Nathaniel Pitts  
Margaret Pollack and Paula  
Reed Lynch  
Marjorie Lynne Powell  
Ane Powers  
Lutz Prager and Pat Lark\*  
Mr. and Mrs. Thomas J.  
Reckford  
Elise and Dennis Reeder  
Christopher Robinson  
Gareth Rosenau  
Bruce and Lori Laitman  
Rosenblum  
Emily B. Rouse  
Cathy Rutherford and Lisa  
Levine  
Carol Schwartz  
Linda and Arthur Schwartz  
Richard and Jacqueline  
Sellers  
Erin P. Shannon  
Lisa and Jim Shannon  
Hana Sharif  
Bobbi and Larry Shulman  
Ken Simonson and Jan  
Solomon  
Mike and Patti Sipple  
Annelise and Robert H.  
Smith  
Carl Wayne Smith and  
Michael Burke  
Lawrence and Arlene  
Spinelli  
Cecile Srodes

Greig Stewart and James  
Hudson  
Robert J. Surovell  
Bill Swedish and Linda  
Griggs  
Eileen and Michael Tanner  
Linda and Steuart Thomsen  
Laura L. Tosi  
John and Val Wheeler  
Jack and Sue Whitelaw  
Ken and Dorothy Woodcock  
Robert and Anne Yerman  
Michael Walker  
Jeffrey and Johanna Zinn

## LEAD

Anonymous (7)  
Dr. and Mrs. Nelson  
Adamson  
Jenna and Bill Allen  
Hon. Frank and Mrs.  
Antoinette Almaguer  
Tonia and Scott Anderson  
Virginia Anthony  
Kathy and Lawrence  
Ausbell  
Dr. John Bailey and Mrs.  
Juanita O. Coye Bailey  
Ronald Bailey and Pamela  
Friedman  
Michael Baker  
Ann and Mal Barasch  
Janet and David Batlan  
Anna K. Behrensmeier  
Karen Belley and Eric  
Fingerhut  
Elizabeth L. Blakeslee  
Vincent and Veronica Boles  
Dr. and Mrs. Gerald Borsuk  
Jan Boyce  
Rita Braver Barnett  
Dr. Adrienne Brown  
Harold R. Bucholtz  
Yvette Benton Bullock  
S. M. Bumbrey  
Donna Butts and William  
Libro  
Nancy Chesser and J.M.  
Rowe  
Jo Ann and Wesley Chin  
Rese Cloyd  
Francis and Terry Coates  
The Manny and Ruthy  
Cohen Foundation  
Joe and Randi Cosentino  
Johanna S. Cummings in  
memory of Ian Cummings  
Mr. and Mrs. Philip Currie  
Richard Dagen  
Julie Davis and Clyde  
Relick  
Pat Davis and Wes  
Callender  
Deanna K. Dawson  
Lorraine Day  
Lisa and Tony Delity  
Angela Dickey and Patricia  
Norland  
Althea Dixon  
Kimberly Dixon  
Edward Donahue, III  
Don Douglas and Carolyne  
Weil  
Cheryl Dragoo  
John Driscoll  
Sue Duncan and Leo Fisher  
Mrs. Elizabeth Edgeworth  
Rick and Renee Edson  
Mr. and Mrs. Michael Flyer  
Allan D. Friedman  
JoEllen and Martin Frost  
Richard Gervase and Stuart  
Delery  
Amy C. Gilbert  
Mark\* and Sara Goldberg  
Paula S. Goldman  
John M. Goodman

Janet Hall Graft  
The Greene-Milstein Family  
Foundation  
Bob Gronenberg  
Gail Gulliksen  
Jack E. Hairston Jr.  
The Honorable Robert and  
Susan Hale  
Robert and Carol Hall  
Mr. Lars Hanson and Ms.  
Rosanne LeVitre  
Mr. and Mrs. Peter D. Hart  
Doris Hauser  
Elizabeth C. Hawthorne  
Shawn C. Helm and J.  
Thomas Marchitto  
Liz Hilder and Randy Smith  
Jill Hill and Julie Hill  
Lucia and Fred Hill  
Jessica Hirschorn and  
Henry Heward, Jr.  
Clarence G. Hoop  
John and Debra Howard  
The Katherine Lindsay  
Howell Fund  
Drew Huffman  
Ms. Lyn Ingersoll  
Patricia Jackman and  
Stephen L. John  
Dr. and Mrs. William B.  
Jackson II  
Jason Johnston  
Wayne and Susan Jonas  
Thelma D. Jones  
Martha L. Kahn in memory  
of Simeon M. Kriesberg  
Belinda Kane  
Dr. and Mrs. Ron Karpick  
Joseph and Jane Keady  
Kyle Kerr and Stephen  
Bique  
Kathleen Knepper  
Patricia and John Koskinen  
Ms. Jane Mary Kwass  
Jane Lang  
John and Jane Lewis  
Carol Ann and Kenneth  
Linder  
Mrs. E. Kathleen Linville  
David Lloyd, Realtor  
Shirley Loo  
Kenneth C. and Elizabeth  
M. Lundeen  
Ms. Linda Marks and Mr.  
Rafael V. Lopez  
Joanne S. Martin  
Lou Mayo  
Marlene Mayo  
Lou Mazeway  
Patricia McMahon  
Dr. Florence K. Millar  
David Mitchell  
Alfred Munzer and Joel  
Wind  
Donald and Lynne Myers  
Meenakshi and Arvind  
Nandedkar  
Doris Parker and Michael  
Spatz  
Dave Pawlik and Susan  
Albertine  
Stan Peabody  
Anne E. Peret  
Daniel Pink  
Carroll Quinn  
Vincent and Nancy Radosta  
Emil and Judith\* Regelman  
Margaret Rice and Bill  
Sette  
Lynda Robb  
June A. Rogul  
Helen Ross  
Fern Flanagan Saddler  
Kenneth and Chris Sale  
Alan and Florence Salisbury  
Jean Sammon



## Perfect Pre-Show Dinner!

*DELICIOUS AND GREAT VALUE LOCATED JUST STEPS AWAY FROM ARENA STAGE*

# DINNER & SHOW

## \$39 THREE-COURSE DINNER

Start your evening with a delicious three-course prix fixe menu, then walk over to see the show.

Save 50% on Bottles of House Wine to pair with your dinner!

- Show your Arena Stage ticket and enjoy 10% off our a la carte menu if you don't opt for the 3-course dinner.

- Offer not valid with Prix Fixe Menu, Wine Special, or any other offers or promotions.



## Dinner Coupon

## \$39 THREE-COURSE DINNER

Reserve Your Table Now!

1101 4th St, SW Washinton, DC 20024

Phone: (202) 488-0987 | [www.station4dc.com](http://www.station4dc.com)

Coupon is redeemable for one guest per table and can only be used once. Valid for Arena Stage ticket holders only.  
Not valid for add-on or any other promotions or discounts. Offer expires 06/30/2025.

Cut Here ✂

# INDIVIDUAL DONORS

Evelyn Sandground and Bill Perkins, in memory of Frank and Marta Jager  
Molly Smith and Suzanne Blue Star Boy  
Sharon Steele  
Dr. Sheila Taube  
Elizabeth and Jerome Teles  
Ryan Neels Terry and Louis Loh  
Elizabeth Thornhill  
Elizab and Mrs. James T. Turner  
Roger and Diane Warin  
Cameron and Susan Weiffenbach  
Walter Wentz  
George and Patti White  
Debbie and Daniel Williams  
J. David Willson  
Robert Wilson

## SUPPORTING ROLE

Anonymous (16)  
Susan Absher  
Ms. Carol J. Anderson  
Victoria Arana  
Robert J. Bachman  
Kevin Baker  
Mary Baldini  
Marion S. Ballard  
Mary Barton and Beth Biegelsen  
Edward and Iris Beckwith  
Sue Benson  
Tom Blackburn  
Ann Blackman and Michael Putzel  
Edward Blanton and Rusty Lynn  
Tanya Bodzin  
Nettie Bouchie  
Anne Boyden  
Cynthia Boyer\*  
Steven Brady  
Valerie Briggs and Peter Kelley  
Ms. Carolyn Broussard\*  
Diane Brown  
Kathy Brown in memory of Ted Bean  
Richard Allen Brown  
Terrence J. Brown and Linda D. Whitlock-Brown  
Susan and Mike Burk  
Avery Burns  
Rev. Dr. and Mrs. Cameron Byrd  
Sandra and Paul Byrne  
Marni Byrum and Martha McQuade  
John P. Cahill  
Maria Carmona  
Ms. Patricia Carter  
Carla Cartwright  
Michael Carty and Linda Brothers  
Cecilia M. Chandler  
Allayne and Brian Chappelle  
Beth and Ron Cogswell  
Ann Collins  
Brian Collins  
John and Sheila Compton  
James and Ann Connell  
Ray and Mary Converse  
Barbara and Paul Couture  
Susan M. Crawford  
Laurie Davis and Joe Sellers  
Stephen A. Dean and Pamela S. Hinds  
Mr. Stephen Dennett  
Clark and Emilie Downs  
David Dunn  
Ann Elliott  
Evelyn and Barry Epstein

Christopher Ernst  
Ralph and Gwendolyn Everett  
Catherine Fadel  
Gary Felser  
Jill A. Fields  
Bonnie and Larry Fields  
Cathy and Donald Fogel  
Heather Foley  
Mr. Russell Fox  
Catherine Gahres and James Woolford  
Paul Gamble  
Natwar Gandhi and Panna Naik  
Susan B. Garland  
Rachel Gartner  
Dr. Kirk Geter  
Wayne and Laura Gifford  
Martha Goldstone  
Alvin and Maxine Golub  
Joyce and Richard Gordon  
Gerry and Alan Graham  
Palmer and Barry Graham  
Madi Green, in memory of Duff Green III  
Mr. and Mrs. Abraham Greenstein  
Karen T. Grisez  
Sue Guenther  
Wilbur Hadden  
Daniel and Therisia Hall  
Brenda Hawkins  
Rachel Hecht  
Bert Helfinstein and Margaret Rodenberg  
Connie Heller  
Paul Herman and Karen Goldman  
Dorothea Hiltensbrand  
Karen Hirakawa  
Toby Horn  
Roger and Neesa Hoskin  
Jerry Hungerman  
Heather Huyck  
Geraldine Inge  
Ann Ingram  
Smyrna N. Jackson  
Paul and Pam Jaikaran  
Robin Jenkins  
Norm and Anita Johnson  
Diane Johnson-Quinn and Vincent Quinn  
Kenneth and Therese Johnston  
Kimberly and Tad Johnston  
Joyce E. Jordan  
Corey K.  
Robert Kain  
Thomas Kane  
Robbie Katson  
Gale Kaufmann  
Michael Kielbiewicz and Barbara Strong  
Peter Kimmel and Stephanie Jackson  
Mrs. William Kingsbury  
Kenneth and Carol Doran Klein  
Emily Irish Kohler  
Mary Lou and Jack Kramer  
Paul Kung  
Sarah Kyrouac  
Mr. and Mrs. James Landberg  
Allan and Sondra Laufer  
Robin Lee  
Philip and Lisa Leibow  
Steve Leinwand and Ann Lawrence  
Paul Levine  
Dave Levy  
Michael and Paula Levy  
Dr. and Mrs. Randall J. Lewis  
Jan and Elizabeth Lodal  
Nga Lopez

Frank and Liz Lostumbo  
Joan Lunney  
Chris and Christine Magee  
Olusola Malomo  
Gerald and Madeline Malovany  
Martin Malsch and Jane Axelrad  
Harry Manin  
Hon. John E. Mansfield  
Susan and Dan Mareck  
Margaret Marin  
Carol Marsh  
Steve Marsh  
Michelle Mason  
Hans and Marianne Mayr  
William McBride and Susan Caporaso McBride  
Elizabeth Ann McGrath  
Margaret McKelvey and William Mckinley  
Sarah McMeans  
Terry and Tom Melo  
Lenore Meyers  
Alan Miller  
Sandy Mitchell  
Mary Beth Moore and Douglas Ruby  
Bob and Wendy Morris  
Mr. Robert J. Morse  
Stephen H. Morris and Jill L. Clark  
Robert and Mimi Morse  
Helaine G. Morss  
Delphine Motley  
Jack Moyer and Jane Passman  
Marilyn L. Muench  
Hedy Nash and John Wetterau  
Nick Newlin  
William and Louisa Newlin  
Ms. Laurence Nolan  
Wilson and Deborah Parran  
Bill and Jenny Pate  
Ms. Barbara Patocka  
Scott Pearson  
Jeanne and Burnie Peters  
Margaret and Carl Pfeiffer  
Sophia Phillips  
Gavin Pinchback  
Gail Povar and Larry Bachorik  
Wendell and Kathy Primus  
Emily Johnson and Vijay Ramachandran  
Howard and Emily Reichel  
Catherine Remijan  
Maria Farese Rendine  
Richard B. and Constance Rhind Robey  
Marietta S. Robinson  
Dr. Tommie L. Robinson, Jr.  
Charles Rohe  
Denise A. Rollins  
Setsuko Rosen and Robert Luther  
Steven M. Rosenberg and Stewart C. Low III  
Herbert and Nancy Rosenthal  
Sheryl Rosenthal and Marty Bell  
Dr. Bernard and Louise Rostker  
Mr. and Mrs. John Sacchetti  
Carol Sadler and Steve Geimann  
Linda B. Schakel  
Richard Schiller  
Dr. Frederick\* and Peri Schuyler  
Jennifer Segal  
Sandra and David Sellers  
Charlotte Selton  
Skip and Dee Seward  
Sally Simms

Mary and Charles Sjoquist  
James A. Smales  
Donald M. Smith and Claire L. Filemyr  
Pamela Brown Smith  
Dan Snyder and Rory Austin  
Kate Snyder  
Rochelle Steinberg (Shellie)  
Ruth Tate  
Dennis and Rosalind Thomas  
Deborah Thompson  
Mr. Al Thomson and Ms. Carol Michaelsen  
Patricia Thorne  
Juergen Tooren  
Rita C. Toscano  
Roger and Elizabeth Trangsrud  
Angela Tucciaron  
Kathryn Turner  
Dr. Carolyn Peoples Veiga  
Steve Verna  
Geoffrey and Susan Vincent  
Ms. Maria Wagner  
Kathy Waldman and Steve Sabat  
Michael Waldman and Linda Coe  
Howard Walgren and Lee Allen  
Pamela Walker  
Richard and Joann Weiner  
Helen White and Andy Leighton  
Greg and Mary Whiteman  
Robert and Barbara Whitten  
Linda Jepson Willen  
Bernetta and Kevin Williams  
Jean and Sam Williams  
Larry and Patti Williams/  
Pride  
Patricia Page Williams  
Robert and Gwendolyn Williams  
Antoinette WinklerPrins  
Beverly and Chris With David Woodson  
Beth and John Wright  
Elaine Wunderlich  
Edith Wyeth  
Karen and Todd Yoder  
David Young  
Joel and Pamela Zingesser  
Victor Zitel

\*Deceased

## Legend:

**Ovation Circle**  
\$100,000 and above  
**Founder's Circle**  
\$50,000-\$99,999  
**Benefactor's Circle**  
\$25,000-\$49,999  
**Leadership Circle**  
\$15,000-\$24,999  
**President's Circle**  
\$10,000-\$14,999  
**Producer's Circle**  
\$6,000-\$9,999  
**Director's Circle**  
\$3,000-\$5,999  
**Playwright's Circle**  
\$1,500-\$2,999  
**Lead**  
\$700-\$1,499  
**Supporting Role**  
\$350-\$699





exelon<sup>SM</sup>

# We Share Your Dream for the Future

Powering our communities is just the beginning. At Exelon, we consider it our responsibility to improve the quality of life for people in the communities where we live, work and serve. Participation in good corporate citizenship is an integral part of our culture, and we inspire our employees to help everyone succeed.



# INSTITUTIONAL DONORS

The vital support Arena Stage receives from many institutions makes our work possible. We thank those institutions who have generously donated \$1,500 or more to our Annual Fund campaign this year. This list represents supporters as of March 28, 2025.

## OVATION CIRCLE



Anonymous

## FOUNDER'S CIRCLE



Share Fund

## BENEFACTOR'S CIRCLE



deLaski Family Foundation

## LEADERSHIP CIRCLE



Anonymous  
The Theodore H. Barth Foundation, Inc.  
Dallas Morse Coors Foundation for  
the Performing Arts

## PRESIDENT'S CIRCLE

Alice Shaver Foundation  
BakerHostetler LLP  
The Bernstein Companies  
Boston Consulting Group  
Comcast NBC Universal  
The Davis/Dauray Family Fund  
Mars Foundation  
Pritzker Pucker Family Foundation  
S&R Evermay  
Southwest Business Improvement District  
The Morgan Fund at Seattle Foundation  
Venable Foundation

## PRODUCER'S CIRCLE

Dimick Foundation  
England Family Foundation  
Friends of Southwest DC  
Gallery 64  
Graham Holdings Company  
Hattie M. Strong Foundation  
JBG Smith Cares  
The Mihir Desai Foundation  
Strategic Education  
The Nora Roberts Foundation  
The Reef Team of TTR Sotheby's

## DIRECTOR'S CIRCLE

ArentFox Schiff  
Enterprise Mobility Foundation  
The Howard and Geraldine Polinger Foundation

## PLAYWRIGHT'S CIRCLE

Potomac Law Group, PLLC  
Wawa Foundation

**Legend:**

Ovation Circle.....	\$100,000 and above
Founder's Circle.....	\$50,000-\$99,999
Benefactor's Circle.....	\$25,000-\$49,999
Leadership Circle.....	\$15,000-\$24,999
President's Circle.....	\$10,000-\$14,999
Producer's Circle.....	\$5,000-\$9,999
Director's Circle.....	\$2,500-\$4,999
Playwright's Circle.....	\$1,500-\$2,499

We endeavor to provide a complete listing of all donors in the above categories. However, if your name is not listed, please contact the Development Department at 202-600-4177. We are also grateful to the thousands of other contributors to Arena Stage, whose names space will not permit us to print.

# ARENA STAGE THEATER STAFF

Artistic Director .....Hana S. Sharif  
Executive Producer .....Edgar Dobie  
Founding Director .....Zelda Fichandler  
(1924-2016)  
Founding Executive  
Director.....Thomas C. Fichandler  
(1915-1997)  
Artistic Director  
Emeritus.....Molly Smith

## ADMINISTRATION

Chief of Staff.....Alison Irvin  
Executive Assistant.....Hannah Viederman  
Chief Financial Officer.....Judy Leventhal  
Controller.....John Monnett  
Accounting Manager .....Christopher Murk  
Staff Accountant.....Mark Runion  
Payroll & HR Administrator.....Tyra Picazo  
Human Resources Consultant .....Lighterfly:  
Susan Shin, Jill Hulnick, Stella Lim  
Auditors.....Marcum LLP  
Legal Counsel .....ArentFox Schiff LLP;  
Kramer Levin Robbins Russell

## ARTISTIC

Associate Artistic Director .....Teresa Sapien  
Senior Director, Artistic Strategy  
and Impact .....Reggie D. White  
Literary Manager.....Otis C. Ramsey-Zoe  
Casting Director/Line Producer.....Raiyon Hunter  
Artistic Associate.....Misy Singson  
Artistic Fellow .....Abigail Thomas\*  
Current Commissioned Writers .....The Bengsons,  
Lee Cataluna, Noah Diaz  
Lady Dane Figueroa Edidi,  
Emily Feldman, Idris Goodwin,  
Caleen Sinnette Jennings, Deepak Kumar,  
Taylor Mac, Octavio Solis, Vera Starbard,  
Cheryl West, Lauren Yee,  
Karen Zacarias, Zack Zadek

## BUILDING OPERATIONS

Director of Facilities  
and Operations.....Keaun Windear  
Maintenance Assistant.....Tevin Smith  
Porter .....Lawrence Wise  
Building Technician.....Harvey Ceasar  
Stage Door Attendant.....Kay Rogers  
Environmental and Security Services.....SWBID

## COMMUNITY ENGAGEMENT

Director of Community  
Engagement .....Sean-Maurice Lynch  
Camp Programs Director .....Rebecca Campana  
Community Engagement  
Producer .....Tiffany Fulson

Learning Engagement  
Managers.....Katie Campbell,  
Grant Emerson Harvey  
Training Programs Manager .....Zoë Hall  
Learning Engagement  
Coordinator.....Kayla Warren  
Community Partnership  
Assistant .....Douglas Robinson  
Senior Community  
Engagement Fellow.....Winta Habtemichael\*  
School Programs  
Fellow.....Esteban Marmolejo-Suarez\*

## DEVELOPMENT

Interim Chief  
Development Officer.....Betsy O. Anderson  
Director of Development  
Operations and Events .....Maria Corso  
Director of  
Strategic Philanthropy.....R. Wesley Meekins  
Director of  
Institutional Partnerships.....Shayla Hines-Graham  
Interim Director of  
Institutional Partnerships .....Abigail Cady  
Membership Manager .....Lauren Lopaty  
Gift Planning Specialist .....Maya Weil  
Institutional Partnerships  
Specialist .....Mary Helen Pryal  
Membership Assistant .....Oscar León  
Development Operations  
and Events Assistant .....Mina Sollars  
Development Fellow .....Nathaniel Huff\*

## GENERAL MANAGEMENT

General Manager.....Alicia Sells  
Associate General  
Manager.....Katharine Templeton  
Company Manager .....Trisha Hein  
Assistant Company Manager.....Bowen Fox  
General and Production  
Management Coordinator .....Jenna Murphy  
General and Company  
Management Fellow .....Rachel Halili\*

## INFORMATION TECHNOLOGY & SYSTEMS ADMINISTRATION

Information Technology  
Consultant.....Ren Tec Solutions:  
Travis Armbuster (Director),  
Tima Theppakdee (Help Desk Tier II),  
Jime Marquez (Help Desk),  
Jarrett Poole (System Administrator)  
IS Help Desk .....Eddie Wieland

MARKETING & COMMUNICATIONS

Director of Marketing & Communications..... Ashton Beck  
Associate Director of Marketing & Communications.....Ryan Impagliazzo  
Senior Graphic Designer..... Jenny Hwang  
Content and Email Specialist ..... Gaby Castro-Rodriguez  
Public Relations Specialist.....Anastasia St. Hilaire  
Graphic Designer ..... Kristopher Ingle  
Marketing & Communications Administrative Assistant..... Destiny King  
Marketing and Media Fellow .....Danait Haddish\*  
Multimedia Design Fellow ..... Jane Gerrard\*

PRODUCTION

Senior Production Manager.....Trevor A. Riley  
Assistant Production Manager ..... Rachel Crawford

STAGE MANAGEMENT

Resident Production Stage Manager .....Christi B. Spann

SCENIC

Technical Director ..... Travis Smith  
Associate Technical Director ..... Clare Cawley  
Scene Shop Supervisor ..... Frank Miller  
Stage Supervisor ..... Hannah Martin  
Scenic Charge Artist.....Colleen Doty  
Scenic Artist.....Misha Rodriguez  
Carpenters.....Erick Boscana,  
Matthew Grisdela, Julia Junghans,  
Max Marshall, Logan McDowell, Lily Rehberg

PROPERTIES

Properties Director .....Jennifer Sheetz  
Associate Properties Director ..... Jonathan Borgia  
Head Props Artisan ..... Niell DuVal  
Props Artisan ..... Kyle Handziak  
Props Assistants .....Erica Feidelseit, Kayla Prough

LIGHTS

Lighting Supervisor ..... Paul Villalovoz  
Assistant Lighting Supervisor.....Olivia Rudd  
Electricians..... Scott Folsom, Kelsey Swanson  
Nicole Trantum  
Lighting Fellow.....Christian Henriquez\*

SOUND

Sound and Video Supervisor ..... Brian Burchett  
Assistant Sound and Video Supervisor .....Di Carey  
Sound Technicians.....Alexander Cloud,  
Liv Farley, Kirubell Seyoum

COSTUMES

Costume Director.....Joseph P. Salasovich  
Associate Costume Director .....Cierra Coan  
Draper .....Seth Gilbert  
First Hands .....Michele Macadaeg,  
Elizabeth Spilsbury  
Craftsperson.....Deborah Nash  
Wardrobe Supervisor.....Alice Hawfield  
Wigs, Hair, and Makeup Supervisor..... Jaime Bagley  
Dressers..... Caitlin O'Brien, Sabrina Simmons

SALES & AUDIENCE SERVICES

Senior Director, Sales & Audience Services .....Isaac Evans  
Sales Operations Specialist & Executive Assistant.....Sabrina Zillinger

SALES OFFICE

Associate Director of Sales Services & Operations ..... Caroline Hunt  
Junior Tessitura & Ticketing Systems Specialist.....Aaron Hutchens  
Managers of Sales Services..... Hannah Damanka,  
Olivia Martin

Lead Sales & Audience Services Associate .....Keshawn Connor  
Sales & Audience Services Associates..... Mary Ann Anderson-Garlic,  
Sydné Marie Chesson, Colin O'Bryan,  
Dylan Parham, Iara Rogers Benchoam,  
Gary Shackelford

GROUP SALES

Lead Manager of Group Sales .....Donald Jolly  
Group Sales Coordinators.....Brandon Ferguson  
Melissa Lin Sturges

AUDIENCE SERVICES

Director of Audience Services .....Andrew Rampy  
House Managers..... Ric Birch, Vicky Kobelka,  
Bruce Perry, Zachary Radhuber

EVENTS & RENTALS

Manager of Events & Rentals.....Trevor Haren  
Events & Rentals Coordinators.....Hiwot Hailu,  
Jasmine Martin

MERCHANDISING, FOOD, & BEVERAGE

Associate Director of Merchandising & Guest Experience.....Jody Barasch  
Lead Bartender, Hospitality .....Erika Wallace  
Lead Bartender, Operations.....Edwin Cortez  
Bartenders..... Tristin Evans,  
Danait Haddish, Rachel Halili,  
Megan Neftali, Imani Pugh,  
Kaitlyn Sakry, Abigail Thomas





# MedStar Health



## Care that puts you in the spotlight.

At MedStar Health, we're here for you when you need us. That's why we offer more urgent care locations than any healthcare system in the region, including our newest location in Navy Yard. We provide on-demand telehealth, available 24/7. Plus, we've added more than 700 new providers across MedStar Health—all to better treat you.

It's  
how  
we  
treat  
people.

