



# UNKNOWN SOLDIER

2023/24 SEASON

A NEW MUSICAL





## Amplifying artists of every age.

AARP celebrates artists over 50 of every form. Through our Brain Health work, we know that art keeps us mentally sharp, as it connects us and preserves our collective story. We're uplifting these dynamic artists who have mastered their craft in the areas of costume design, dance and hip-hop music.

**Nasha Thomas**  
National Director,  
AileyCamp Master Teacher

**Ruth E. Carter**  
Award-Winning  
Costume Designer

**Doug E. Fresh**  
Hip-Hop Legend



Discover more today at  
[AARP.org/BlackCommunity](https://AARP.org/BlackCommunity)

# UNKNOWN SOLDIER A NEW MUSICAL

## TABLE OF CONTENTS

- 5 Artistically Speaking
- 7 From the Executive Producer
- 8 Dramaturgy Note
- 11 Title Page
- 12 Cast/Musicians
- 13 For this Production/Special Thanks
- 15 Setting/Musical Numbers
- 17 Bios — Cast
- 21 Bios — Creative
- 26 Bios — Arena Stage Leadership
- 29 Board of Trustees/Young Patrons Board
- 31 Thank You — Full Circle Society
- 32 Thank You — Individual Donors
- 37 Thank You — Institutional Donors
- 38 Theater Staff

**ARENA STAGE**  
1101 Sixth Street SW  
Washington, D.C. 20024-2461  
ADMINISTRATION 202-554-9066  
SALES OFFICE 202-488-3300  
[arenastage.org](https://arenastage.org)

©2024 Arena Stage.  
All editorial and advertising material  
is fully protected and must not be  
reproduced in any manner without  
written permission.

*Unknown Soldier* program book  
published March 29, 2024.

Photo of Kerstin Anderson, Lora  
Lee Gayer, and Perry Sherman for  
*Unknown Soldier* by Tony Powell.

#### PROGRAM BOOK STAFF

Elizabeth Hawks,  
Director of Marketing &  
Communications

Ryan Impagliazzo,  
Associate Director, Marketing &  
Communications

Shawn Helm,  
Graphic Designer



## ARENA STAGE MISSION

Arena Stage is the voice of American theater resident in our nation's capital. Focused on American artists, our productions are innovative and representative of stories from across the country. We nurture new plays and reimagine classics. We celebrate our democracy and diversity through a multitude of voices in our productions and community engagement programs to inspire people to action. We produce all that is passionate, exuberant, profound, entertaining, deep and dangerous in the American spirit.



Photo by Nic Lehoux courtesy of Bing Thom Architects.



Arena Stage is built on the land of the Piscataway people of the Algonquin-speaking tribes, as well as the lands of the Native American people of the greater Anacostia, Potomac, and Tidewater regions.

## ARTISTICALLY SPEAKING



Music has untold power. It can bridge the divide between enemies, unlock forgotten memories, and even link the past to the present and future. It also has the ability to turn our gaze inward, connecting us to the hidden truths lying deep below the surface. Musicals catalyze that superpower, transforming a childhood home, a worn letter, or a hand-me-down robe into a sweeping refrain that can unearth generations' worth of stories and shake us to our very core. *Unknown Soldier* illuminates the untold, unknowable histories we carry inside.

After its March 2020 run at Playwrights Horizon was cut short by the onset of the pandemic, Daniel Goldstein, the mind behind the show's sharp-witted book, knew Arena Stage would make a perfect home for the piece. In the intervening four years since that production, the show has only deepened, its premise further clarified by the all-too present anxieties of our world. As the fingerprints of grief, both personal and communal, continue to linger on our collective souls, *Unknown Soldier*, featuring a soaring score by the late, Michael Friedman, emerges bearing a beautifully vital story about what it means to hold on to love—and to each other—amidst a turbulent past and a precarious present.

This multi-generational tale spans nearly 100 years of American history and leads us on an engrossing, and at times whimsical, search for the truth behind the fabled "Unknown Soldier". As we watch Ellen Rabinowitz chafe against familial preconceptions and wrestle with the repercussions of her actions, we recognize and ultimately find solace in the fact that sometimes, though the world can be cold and the past merciless, the answers lie within our own families, our own shoeboxes of secrets, our own selves.

And though its scope and score are sweeping, love sits at the heart of *Unknown Soldier*. The giddy romantic love of two young people who feel a universe of possibility in the touch of a hand and the fiercely determined love of someone who refuses to let their memory be lost to the sands of time or the scars of war. To decide to love is to begin anew. And to decide to make theater in this moment is to love: to believe, fundamentally, despite the fear and uncertainty, in the beauty of the unknown, in the exigent promise of a new beginning.

I am so honored to be able to support the continued development of this beautiful new musical as it weaves a tapestry both heartfelt and mysterious, buoyant and grounded, full-of-memory and imbued with hope. Like a well-lived and well-loved relative, *Unknown Soldier* is full of stories and wisdom, hiding in plain sight, begging for our curiosity and our empathy.

The theater is nothing if not a place for past and present to converge—a place to dig into the archives of our memories and breathe new life into them, to gather ourselves to laugh, cry, love, and, hopefully, heal—together.

Hana S. Sharif  
Artistic Director





# In service of those who serve

Boeing is grateful to service members and their families for their dedication and we are proud to support the Voices of Now Military Ensemble at Arena Stage and their efforts to tell more military-connected stories.

Learn more at [boeing.com/community](https://boeing.com/community)

## FROM THE EXECUTIVE PRODUCER



We live in an age of easily available images so the idea of an image capturing something unknown is deeply compelling. Thank you for joining us for *Unknown Soldier*, a poignant musical tale from Daniel Goldstein and Michael Friedman. This story makes so much sense to be told at Arena Stage. Because we reside in our nation's capital, our military neighbors are also resident in our community. While the story takes place in upstate New York, the loss and discovery of the characters may find deep resonance in our Southwest Washington community. Perhaps even more so at this moment in time when military forces are actors in so many real-life stories on the international stage.

The idea of unknown, forgotten, or fallen soldiers has a deep impact and our job as theater makers, and friends and neighbors, is to keep those memories alive. Added poignancy is that composer and co-lyricist Michael Friedman's passing occurred shortly after the premiere of this piece, and Daniel Goldstein continued to champion their story.

In appreciation of our military friends and families, a number of years ago Arena started a tradition of hosting military families as our guests for dinner and a show during the Thanksgiving weekend. After a pandemic pause, we are delighted to re-start that practice in a new way. This spring, we will host Military Night, with dinner and a performance of *Unknown Soldier*. This event remains a way to give thanks for the personal and professional sacrifices of our esteemed military. It is also a very special community affair. Luke's Wings, Access Housing, VA Medical, and USO assisted in distributing tickets and quite a few of our Wharf neighbors and theater peers donated to support a raffle to benefit the attendees.

This season we are also delighted that the Boeing Corporation has sponsored a Voices of Now ensemble of young artists from military and veterans' families. Voices of Now is a devised theater program in which ensembles of young people work together to create autobiographical and physical theater pieces posing significant questions relevant to the artists and their communities. Voices of Now's goal is to create positive change within the artists' communities by engaging in dialogue centered on the unique life experiences of the participants. There are eight to ten local ensembles annually, and Voices of Now has travelled internationally nine times (India twice working in four cities each time, Croatia four times, as well as projects in Bosnia and Herzegovina, Peru, and Ukraine). More than 2,000 artists have had their lives changed by their Voices of Now experience over the last decade, and having a military-focused ensemble has been a long-time goal. Much appreciation to Boeing for helping us to reach that goal.

May the story of this journey of discovery provide you a window into your memories and mysteries yet to be explored. We are glad you are with us now to share!

**Edgar Dobie**  
Executive Producer  
President of the Corporation

# ARCHIVES OF SELF, CHASING UNKNOWNNS

by Otis Ramsey-Zöe, Dramaturg

“When Michael Friedman and I set out to write *Unknown Soldier*, we were interested in figuring out how the past and the present merge, how objects trace through time, and how your history is more fluid than you think and your future less of a mystery than your past.”

—Daniel Goldstein

“Yet I have wondered sometimes whether, for example, we have truly taken seriously that the intricate web of connections that characterizes any event or problem is the story.”

—Avery Gordon, *Ghostly Matters: Haunting and the Sociological Imagination*

“I’ll wait for you as long as it takes.”

—Lucy Anderson in *Unknown Soldier*

There are individuals whose names we do not know. There are individuals whose names we do know and about whom little else more than to what they answer to is known. The latter may be true even of our most intimate relations. R&B singer Tamia once crooned about a “stranger in my house.” As children, we may only know our parents and other relations through the slim lens of their roles in raising and caring for us. Who else are they in the world? Who were they before we came along? The challenge of knowing anything about anyone, including ourselves—yes, we are often mysteries unto ourselves—is a key component of *Unknown Soldier*. Knowledge, history, and memory are entangled, and in the musical, the desire for all three drive every element of the storytelling.

*Unknown Soldier* concerns forgetting and unknowing on both individual and collective levels. Individuals within the musical long for and seek answers, people, places, and things. Simultaneously, the musical is anchored in events and places about which much has been forgotten. For all the things that we know about the First World War, there is a tremendous amount that the average person does not know. We forget why it happened, and we neglect to ever learn the full extent of its monstrous worldwide implications. The musical is set in Troy, New York, a once vibrant industrial manufacturing city that suffered huge economic and cultural downturns after World War I and again in the 1970s. Troy’s importance to the state of New York and its contributions to American national identity are not legible to those who don’t know the history of the town. For example, did you know that Troy is the hometown of the figure who came to be known as Uncle Sam?

Ellen finds herself back in her grandmother’s home in Troy surrounded by archival objects holding information on her family’s past. The word archive comes from *arkheia*, a Greek term that refers to “a place where records are kept.” Interestingly, archive is also derived from the word *arkhe*, which also means “a beginning, the first place.” Ellen finds herself living in a type of archive, wherein she encounters a photograph on a magazine page that ignites her curiosity. This discovery hurls Ellen into an unsettling relationship between what she sees, what she knows, what she thinks she knows, and what she utterly does not know. The show makes clear to audiences that Ellen is seeing the photograph not for the first time, which instructs us that *Unknown Soldier*, like wives waiting for husbands who have gone off to war, is very much concerned with returns. For the adult Ellen, the photograph starts her onto something new, but it also calls her back to the past. In some way, Ellen’s questions mirror our own.

What have you forgotten? What would you like to forget? What are you trying to remember? What don’t you know that you need to know?



Arena Stage  
Washington, DC

**CLARK**  
CONSTRUCTION

ARENA STAGE

HANA S. SHARIF, ARTISTIC DIRECTOR | EDGAR DOBIE, EXECUTIVE PRODUCER

BY SPECIAL ARRANGEMENT WITH HUNTER ARNOLD

PRESENTS

# UNKNOWN SOLDIER

BOOK BY DANIEL GOLDSTEIN

MUSIC BY MICHAEL FRIEDMAN

LYRICS BY MICHAEL FRIEDMAN AND DANIEL GOLDSTEIN

DIRECTED BY TRIP CULLMAN

CHOREOGRAPHED BY PATRICK MCCOLLUM

ORCHESTRATIONS BY  
MICHAEL FRIEDMAN AND  
MARCO PAGUIA

MUSIC SUPERVISION BY  
JULIE McBRIDE AND  
MARCO PAGUIA

MUSIC DIRECTOR  
CHRIS KONG

SET DESIGNER  
MARK WENDLAND

COSTUME DESIGNER  
JACOB A. CLIMER

LIGHTING DESIGNER  
BEN STANTON

SOUND DESIGNER  
LEON ROTHENBERG

PROJECTION DESIGNER  
LUCY MACKINNON

HAIR, WIG, AND MAKEUP DESIGNER  
J. JARED JANAS

ASSOCIATE DIRECTOR  
SUSANNA WOLK

ASSOCIATE CHOREOGRAPHER  
FRANCINE ESPIRITU

ASSOCIATE MUSIC DIRECTOR  
PETER LEIGH-NILSEN

DRAMATURG  
OTIS RAMSEY-ZÖE

CASTING DIRECTOR  
JOSEPH PINZON

NEW YORK CASTING BY  
THE TELSEY OFFICE  
PATRICK GOODWIN, CSA

STAGE MANAGER  
LISA ANN CHERNOFF\*

ASSISTANT STAGE MANAGER  
DAYNE SUNDMAN\*

*Unknown Soldier* is made possible through generous funding from **AARP**  
with additional support from Patricia and David Fisher,  
Catherine and Chris Guttman-McCabe, and Herb and Dianne Lerner.

The World Premiere of *Unknown Soldier* was produced by the Williamstown Theatre Festival in August, 2015  
Mandy Greenfield, Artistic Director; Stephen M. Kaus, Producer

Playwrights Horizons, Inc., New York City, produced the New York Premiere of *Unknown Soldier* in 2020.

Proudly Shaping  
the Local Landscape

## CAST / MUSICIANS

### CAST (in speaking order)

Young Ellen/Lucy Rabinowitz.....	<b>RIGLEE RUTH BRYSON</b>
Andrew Hoffman .....	<b>ADAM CHANLER-BERAT*</b>
Lucy Anderson.....	<b>JUDY KUHN*</b>
Lucy Lemay.....	<b>KERSTIN ANDERSON*</b>
Ellen Rabinowitz .....	<b>LORA LEE GAYER*</b>
Doctor .....	<b>NEHAL JOSHI*</b>
Francis Grand .....	<b>PERRY SHERMAN*</b>
Ensemble.....	<b>SUMIÉ YOTSUKURA*</b>
Ensemble / u/s Doctor.....	<b>RONALD JOE WILLIAMS*</b>
Ensemble / u/s Andrew.....	<b>TAYLOR WITT*</b>
Ensemble / u/s Lucy Lemay, Ellen Rabinowitz .....	<b>CANDICE SHEDD-THOMPSON*</b>
Swing / u/s Lucy Anderson.....	<b>AMY GRIFFIN*</b>
Swing.....	<b>JORDYN TAYLOR*</b>
Swing / u/s Francis / Dance Captain.....	<b>WOOD VAN METER*</b>
u/s Young Ellen/Lucy Rabinowitz .....	<b>ELIZABETH VARGO</b>

*\*Members of Actors' Equity Association*

### MUSICIANS

Music Director/Conductor/Piano.....	<b>CHRIS KONG</b>
Violin/Guitar .....	<b>MICHAEL TAYLOR</b>
Cello .....	<b>ARON RIDER</b>
Reeds (Flute/Clarinet/Bass Clarinet) .....	<b>ANDREW AXELRAD</b>
Bass .....	<b>ARNOLD GOTTLIEB</b>
Drum Set/Percussion/AFM Musical Contractor .....	<b>DANNY VILLANUEVA</b>

## FOR THIS PRODUCTION / SPECIAL THANKS

### FOR THIS PRODUCTION

Associate Lighting Designer .....	<b>WILBURN BONNELL</b>
Associate Sound Designer.....	<b>RYAN MARSH</b>
Associate Projection Designer .....	<b>DYLAN UREMOVICH</b>
Associate Hair, Wig, and Makeup Designer .....	<b>SARAH NORTON</b>
Projections Programmer .....	<b>DEVIN KINCH</b>
Music Preparation.....	<b>CAMERON MONCUR</b>
Production Assistant.....	<b>REGINA VITALE</b>
Youth Company Supervisor.....	<b>KELSEY NICOLE JENKINS</b>
Stage Carpenter .....	<b>MAX MARSHALL</b>
Props .....	<b>ERICA FEIDELSEIT, ABBY FRY</b>
Light Board Operator .....	<b>KELSEY SWANSON</b>
Followspot Operators.....	<b>JOZEF ORISICH, SIMON SINNREICH</b>
A-1.....	<b>GARY MARKOWITZ</b>
Second Audio.....	<b>LIV FARLEY</b>
Wardrobe Supervisors.....	<b>ADELLE GRESOCK, ALICE HAWFIELD</b>
Wigs, Hair, and Makeup Supervisor.....	<b>JAIME BAGLEY</b>
Medical Consultant.....	<b>DR. LAUREN ALLISTER</b>
Crew Swing.....	<b>TREVOR COMEAU</b>

### SPECIAL THANKS

**Andrew R. Ammerman** is the Directing Sponsor of the 2023/24 Season. His support allows Arena Stage to feature the work of the finest directors on our stages.

The beautiful costumes you see in the 2023/24 Season are generously sponsored by **Lola C. Reinsch and the Reinsch Pierce Family Foundation**.

### PREVIOUS DEVELOPMENT

*Unknown Soldier* was commissioned by Nicholas Martin at The Huntington Theatre as the Norma Jean Calderwood Commission, was developed at The National Musical Theater Conference at The O'Neill, The Sallie B. Goodman Artists' Retreat at McCarter Theatre, and The Manhattan Theatre Club.

The videotaping or other video or audio recording of this production is strictly prohibited.  
Please turn off all electronic devices, unless using specifically for  
GalaPro closed captioning service.

# SOCIALLY SPEAKING

We ❤️ seeing your experience at Arena on social media!

## TAG US:



@arenastage

## TALK ABOUT US:

#ArenaSoldier #ArenaStage #ArenaStageDC #DCTheatre

WIFI NETWORK: **ArenaGuest** PASSWORD: **arenaguest**

## SETTING / MUSICAL NUMBERS

### SETTING

This play takes place in 1918–1920, 1973, and 2003.

### MUSICAL NUMBERS

The Great War .....	YOUNG ELLEN
The Worst Town In New York.....	ELLEN, ANDREW
This is a.....	FRANCIS
The First Time .....	LUCY LEMAY, COMPANY
Where in the World.....	DOCTOR, CHORUS
The People Stare .....	FRANCIS
A Husband Takes Care of the Things.....	LUCY LEMAY
Worst Town (Reprise).....	ELLEN
Milkshake .....	ELLEN, ANDREW
Do You Wonder.....	LUCY LEMAY, FRANCIS
Andrew's Story.....	ANDREW
The Memory Song .....	DOCTOR, CHORUS
I Give Away Children.....	ELLEN
The Clock .....	FRANCIS, LUCY LEMAY
Penelope.....	LUCY ANDERSON, LUCY LEMAY, ELLEN, YOUNG ELLEN
The Ending .....	COMPANY

## CAMP ARENA STAGE

### MULTI-ARTS DAY CAMP

WHERE COMMUNITY AND ART MAKE MAGIC

3-WEEK SESSION:  
JULY 1 – JULY 19

2-WEEK SESSION:  
JULY 22 – AUGUST 2

AGES  
8-15

ON THE CAMPUS OF  
GEORGETOWN  
VISITATION

ART | DANCE | THEATER | MUSIC | WRITING | FILM | AND MORE!

**REGISTER TODAY!**  
ARENASTAGE.ORG/CAMP





A Modern  
American Cuisine Restaurant  
within walking distance of Arena Stage

## \$39 THREE-COURSE DINNER



Start your evening with a delicious  
three-course prix fixe menu then  
walk over to see the show.



Save 50% on Bottles of Wine,  
to pair with your dinner!

Get a 10% Discount on Dinner ordered off the regular  
A la Carte Menu when you present your Arena Stage Ticket

Offer not valid with Prix Fixe Menu, Wine Special, or any other offers or promotions.

**NEW:** Heated Outdoor Seating  
Now Available!

FOR MORE DETAILS, PLEASE VISIT:  
[WWW.STATION4DC.COM](http://WWW.STATION4DC.COM)  
PHONE: (202) 488-0987

1101 4TH ST, SW WASHINGTON, DC 20024

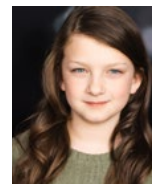
## WHO'S WHO

### CAST



#### KERSTIN ANDERSON

(Lucy Lemay) [she/her] is thrilled to be making her Arena Stage debut! Her Broadway and National Tour credits include *My Fair Lady* (Eliza Doolittle) and *The Sound of Music* (Maria). Other theater appearances include *Cult of Love* (Berkeley Rep), *Unknown Soldier* (Playwrights Horizon), *Afterwords* (5th Avenue), *Doubt* (Westport Playhouse), and *Row* (Audible). She can be heard on Ryan Scott Oliver's albums *Darling: Live in Concert* and *Future Demons*, Ethan Carlson's *Her Sound*, and the Original Cast Album of *Unknown Soldier*. Upcoming short film: *Ventriculus*. Instagram: @kerstanderson1



#### RIGGLEE RUTH BRYSON

(Young Ellen/Lucy Rabinowitz) is so excited to make her Arena Stage debut. Her most recent theater credits include Belinda in *A Christmas Carol* (Ford's Theatre), Pepper in *Annie* (National Tour), Young Scrooge in *A Christmas Carol* (KCRep), Annie in *Annie* (The White Theatre, Kansas City), and Matilda in *Matilda* (Center Stage Academy, Kansas City). Special thanks to Lauren Braton, Jessi Clayton (The Prep), Jason Bercy (Bercy Talent), and David Gilbert (Zuri Agency). Instagram: @rigleeruth



#### ADAM CHANLER-BERAT

(Andrew Hoffman) originated roles on Broadway in *Next to Normal*, *Peter and the Starcatcher*, and *Amélie*. Off-Broadway credits include *I Can Get It for You Wholesale*,

*Assassins*, *Fortress of Solitude* (Lortel nomination), *Rent*, and *Fly by Night*. Regional credits include *Sunday in the Park with George* (Huntington) and *The Year to Come* (La Jolla Playhouse). He starred alongside Vince Vaughn in the film *Delivery Man* and has appeared on television in *Gossip Girl*, *Veep*, *Elementary*, *The Good Wife*, *Doubt*, *The Code*, *NCIS: New Orleans*, and *Soundtrack*. As a writer, Adam's work has been developed by Barrington Stage Company, the Civilians, New York Stage and Film, Rhinebeck Writers Retreat, and Ars Nova. Adam is a proud founding member of the social justice-minded theater collective The Commissary.



#### LORA LEE GAYER

(Ellen Rabinowitz)'s DC credits include *Follies* (Kennedy Center) and *A Funny Thing...* [Helen Hayes nomination] (Shakespeare Theatre). On Broadway,

Lora Lee has starred in *Holiday Inn* (Roundabout Theatre Company), *Doctor Zhivago* (Broadway Theatre), and *Follies* (Marquis Theatre). Off-Broadway: *Pipe Dream* (New York City Center Encores!), *These Seven Sicknesses* (Exit, Pursued by a Bear). Selected Regional: The Ahmanson, Chicago Shakespeare Theater, Goodspeed Musicals, Alliance Theatre, The Old Globe, La Jolla Playhouse, McCarter Theatre Center, Alley Theatre, Oregon Shakespeare Festival. Film: *The Post* directed by Steven Spielberg. Television: *The Tick* (Amazon Studios), *House of Cards* (Netflix), *Law & Order: SVU* (NBC), *Little America* (Apple TV+). Lora Lee graduated from Carnegie Mellon University and Interlochen Arts Academy. Awards and nominations include Helen Hayes Award, Chita Rivera Award, NFAA finalist, National Arts and Letters Award, and Lotte Lenya Young Artist Award. Lora Lee has performed both nationally and internationally with symphonies and orchestras. Instagram: @loralee\_gayer



**AMY GRIFFIN** (*Swing / u/s Lucy Anderson*) has appeared on Broadway in *How the Grinch Stole Christmas!*; Off-Broadway in *The English Bride*, *Mr. President*, *Infertility*,

*Forbidden Broadway*, *Newsical*, *Once Upon a Mattress* (with Jackie Hoffman); and in the first national tours of *Seussical* (with Cathy Rigby) and *Grinch*. Regional credits include Male Greek Chorus in *How I Learned to Drive* (Actors' Shakespeare Project, Critics' Choice Award), Alison in *Fun Home* (New England premiere, Critics' Circle Award), Loretta in *Fly Me to the Moon* (Public Theatre), Fairfax/Others in *Jane Eyre* (NYC workshops), Miss Prism in *The Importance of Being Earnest* (Savannah Rep), Beggar Woman in *Sweeney Todd* (The Rev), and seven(!) flights as Peter Pan (Independent Theatre Award). Love to SB and NB.

[www.amy-griffin.com](http://www.amy-griffin.com)



**NEHAL JOSHI** (*Doctor*) This marks Nehal's 7th show, and 8th time appearing, at Arena Stage over 20 years. Arena credits include Ali Hakim in *Oklahoma!*, Amir in *Disgraced*, Hanratty in

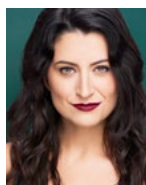
*Catch Me If You Can*, *Mother Courage*, *Music Man*, and *Señor Discretion Himself*. Other DC: Shakespeare Theatre Company, Woolly Mammoth, Olney Theatre Center, The Kennedy Center. Broadway: *The Cottage*, *All My Sons*, *Phantom of the Opera* (Closing Cast), *Flying Over Sunset*, *School of Rock*, *Gettin' the Band Back Together*, *Les Misérables* (Original Revival Cast), *Threepenny Opera*. Off-Broadway: *Cyrano* (made into a recent film), *Working* (2008 revision, Special Drama Desk Award), *Grand Hotel* (Encores!), *Three Sisters*. Video Game: *World of Warcraft: Cataclysm*. TV/Film: *Law & Order: SVU* (NBC), *The Wire* (HBO), *Search Party* (HBO), *Blackout*. He would like to dedicate this performance to his late agent, Scott

Manners, who found him at this theater. Instagram: [@nehajjoshi](https://www.instagram.com/nehajjoshi)



**JUDY KUHN** (*Lucy Anderson*) is a multiple Tony, Grammy, and Olivier Award nominee best known for her work on Broadway in *Fun Home*, *She Loves Me*, *Chess*, *Les*

*Misérables*, *Rags*, Richard Nelson's play *Two Shakespearean Actors* (LCT), and *The Mystery of Edwin Drood* (OBC). DC appearances include Fosca in *Passion* at the Kennedy Center's Sondheim Celebration. In NYC, Judy most recently appeared in *I Can Get It for You Wholesale* (also directed by Trip Cullman) and *Assassins* (Drama Desk and OCC nominations), both at CSC. In 2019 she starred in Trevor Nunn's acclaimed production of *Fiddler on the Roof* in London's West End (Olivier Award nomination). TV/Film includes *Dear Edward* (Apple TV+), Lin-Manuel Miranda's adaptation of *Tick, Tick... Boom!* (Netflix), *Enchanted*, and Disney's *Pocahontas* (title role). Judy has appeared on concert stages around the world and has recorded four solo albums.



**CANDICE SHEDD-THOMPSON** (*Ensemble / u/s Lucy Lema, Ellen Rabinowitz*) is so excited to be making her Arena Stage debut! Favorite DC area credits

include A.D. 16, Nicola in *Kinky Boots* (Olney Theatre Center); Monica in *Rooms: A Rock Romance* (MetroStage); Gynecia in *Head Over Heels* (Monumental Theatre); Snow White in *Disenchanted*, Babette in *Beauty and the Beast* (Creative Cauldron); and Rita LaPorta in *Lucky Stiff* (NextStop Theatre). Regional highlights include Maureen in *Rent* and Woman 1 in *Songs for a New World* (Milton Theatre); *Mamma Mia!* and Esmeralda in *The Hunchback of Notre Dame* (Riverside Center); and *Wide*

*Open Country* at Hershey Park. She is a former Production Vocalist for Celebrity Cruises, and is currently a singer in Bachelor Boys Band, a wedding band that performs for events all over the region.



**PERRY SHERMAN** (*Francis Grand*) originated the role of Francis Off-Broadway at Playwrights Horizons and is thrilled to be making his Arena Stage debut. He has been seen at the Kennedy

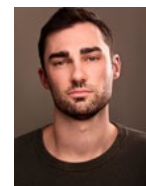
Center in National Tours of both *Next to Normal* and *Spring Awakening*. Broadway: *Fun Home* (Circle in the Square). Off-Broadway: *Milk and Honey* (The York Theatre), *Unknown Soldier* (Playwrights). Other credits include Marius in the Canadian Pre-Broadway Revival of *Les Misérables*, Will in *Burn All Night* at A.R.T., Lucian in the world premiere of *Amélie* at Berkeley Rep, and Davey in *The Ballad of Little Jo* at Two River Theater. TV: *The Deuce* on HBO. Studied at Carnegie Mellon University.



**JORDYN TAYLOR** (*Swing*) is thrilled to be making her Arena Stage debut! DC area credits include Lucille, Bobbi Jean, José in *Junie B. Jones* (Adventure Theatre MTC); Sarah's

Friend in *Ragtime* (Signature Theatre); Missy in *The Marvelous Wonderettes* (NextStop Theatre); Little Ti Moune, Ti Moune u/s in *Once on This Island* (Constellation Theatre Company); Pearl Krabs, Sandy u/s in *SpongeBob Musical* (Toby's Dinner Theatre). TV: *How Great Thou Art*, *A Sacred Celebration* (PBS). Direction/Music Direction: *The Marvelous Wonderettes*, *Summer Theatre Adventures* (NextStop Theatre); *Heathers the Musical* (Howard University). Howard University BFA in Musical Theatre (2023).

Instagram: [@favvvgeminiiii](https://www.instagram.com/favvvgeminiiii)  
TikTok: [@jordyntaylorrr](https://www.tiktok.com/@jordyntaylorrr)



**WOOD VAN METER** (*Swing / u/s Francis / Dance Captain*) is thrilled to be part of *Unknown Soldier* at Arena, after previously working on *Ride the Cyclone*. DC credits

include *West Side Story*, *Shear Madness* (Kennedy Center); *Kiss Me, Kate* (STC); *Silence! The Musical* (Studio Theatre); *Singin' in the Rain* (NextStop Theatre); *Joseph...Dreamcoat* [Helen Hayes nomination – Lead Actor] (Toby's Dinner Theatre); *The Whale* (Rep Stage); and other performances at Signature Theatre, Olney Theatre, Imagination Stage, MetroStage, and Washington Stage Guild. Regional favorites include *Forever Plaid* (Pittsburgh CLO); *Ragtime*, *Rent* (Nashville Rep); *Gypsy* (Hangar Theatre); and *Camelot* (TheatreZone). Love and gratitude to my incredible support system, especially Bruce.

Instagram: [@woodvanmeter](https://www.instagram.com/woodvanmeter)



**ELIZABETH VARGO** (*u/s Young Ellen/Lucy Rabinowitz*) is making her Arena Stage debut. Ellie is a current member of the Voices of Now Mead Ensemble at Arena Stage,

and attended Camp Arena Stage in 2023. She trains at the Metropolitan School of the Arts, is a member of the National Children's Chorus, and has performed in nearly two dozen musicals and recitals. Her most recent credits include *The Nutcracker* (MSA), *Metropolitan Follies* (MSA), *The Wizard of Oz* (St. Bernadette Summer Theatre Program), and *A Night at the Met* (MSA). Ellie was a featured performer in the Georgetown Visitation Preparatory School's Spring 2022 Musical Revue, for which she was awarded the Performing Arts Break Out Performer Award.



# CLOSED CAPTIONING AT YOUR FINGERTIPS

Enjoy the performance from the comfort of any seat.

Download the free  
GalaPro app today!  
(Android and iOS)



**AVAILABLE STARTING APRIL 12**

Arena Stage can also provide devices for use during the performance at Visitor Services.



Arena Stage's Arts Accessibility initiatives are sponsored by exelon

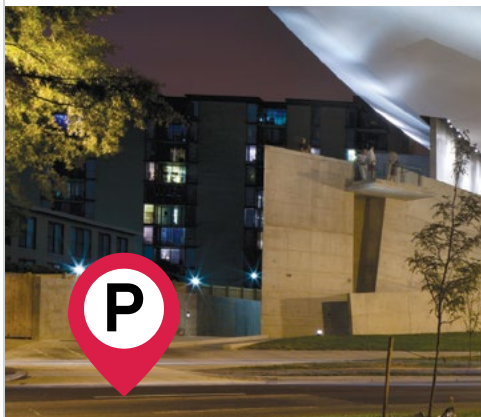
Availability subject to change.



FOR MORE INFORMATION, VISIT [ARENASTAGE.ORG/ACCESSIBILITY](https://arenastage.org/accessibility),  
EMAIL [ACCESS@ARENASTAGE.ORG](mailto:ACCESS@ARENASTAGE.ORG), OR CALL THE SALES OFFICE AT 202-488-3300.

the mead center  
for american theater

## RESERVE PARKING — AND SAVE!



### ENJOY ON-SITE PARKING

Go from your car seat to  
your theater seat with ease  
by reserving parking in our  
on-site garage. Book now  
to secure your spot!



**ARENASTAGE.ORG/PARKING**



the mead center  
for american theater

## WHO'S WHO



### RONALD JOE WILLIAMS

(Ensemble / u/s Doctor) is a Class of 2023 graduate from Howard University's BFA Musical Theatre Program. He guest starred in *Law & Order* and is making his

professional theater debut at Arena Stage!

Instagram: [@ronaldjoewilliams\\_](https://www.instagram.com/ronaldjoewilliams_)



**TAYLOR WITT** (Ensemble / u/s Andrew) last appeared at Arena Stage in *Exclusion*. Virginia Rep: *Beautiful: The Carole King Musical*, *Tuck Everlasting*. The Keegan Theatre: *An Irish Carol*,

*Merrily We Roll Along*, *Shakespeare in Love*.

Olney Theatre Center: *A Nice Indian Boy*.

Signature Theatre: *The Upstairs*

*Department*. Studio Theatre: *Admissions*.

NextStop Theatre Co: *First Date*. Toby's

Dinner Theatre: *Newsies* [Helen Hayes

nomination – Supporting Actor], *The*

*Hunchback of Notre Dame*, *Ghost*. Riverside

Center: *The Bridges of Madison County*,

*Grease*. Imagination Stage: *New Kid*, *Naked*

*Mole Rat Gets Dressed*. The Kennedy

Center TYA: *Don't Let the Pigeon Drive the*

*Bus!*. Instagram: [@witt\\_taylor](https://www.instagram.com/witt_taylor)



### SUMIÉ YOTSUKURA

(Ensemble) is delighted to be making her Arena Stage debut! She was most recently seen as Gussie in *Merrily We Roll Along* (Keegan Theatre)

and Hodel in *Fiddler on the Roof* (Olney

Theatre Center). Other DC credits

include *King of the Yees* (Signature

Theatre), *The Mortification of Fovea*

*Munson* (Kennedy Center TYA), *Jennifer*,

*Who Is Leaving* (Round House Theatre),

*Beauty and the Beast* (Olney Theatre

Center), *Triangle* (Free Range Humans),

and more. Her regional credits include

*The Full Monty* (Transcendence Theatre

Company). She received her BA in

Theatre and Asian & Pacific Islander

American Studies from William & Mary.

Instagram: [@sumie.yotsukura](https://www.instagram.com/sumie.yotsukura)

## CREATIVE

**DANIEL GOLDSTEIN** (*Book and Lyrics*) is thrilled to be making his Arena debut.

*Unknown Soldier* has previously been seen at Williamstown Theatre Festival and Playwrights Horizons. His musical *Row*, about Tori Murden McClure, the first woman/American to row across the Atlantic, was produced by Williamstown and is also available on Audible.

Upcoming projects include *Joan*, a play about the late Joan Rivers at South Coast Rep, and *Kane and Abel*, a musical written with Frank Wildhorn and Nathan Tysen based on the best-selling novel for toho Theatre in Tokyo, Japan. His plays include *Orange Crush*, commissioned by Roundabout Theatre Company, about Tony Schwartz, the ghostwriter of *The Art of the Deal*. With Friedman, he is also the author of *The Song of Songs*, an adaptation of the Sholem Aleichem novella. Daniel is the winner of the 2016 Kleban Prize for most promising musical theater librettist. As a director his work includes many productions on and off-Broadway and at theaters around the United States and internationally. He is a graduate of Northwestern University with a degree in Performance Studies. This one is for Melissa, without whom nothing would be possible.

**MICHAEL FRIEDMAN** (*Music, Lyrics, and Orchestrations*)'s credits include *Bloody Bloody Andrew Jackson* (Broadway and Public Theater) *Unknown Soldier*, *The Fortress of Solitude*, *Love's Labour's Lost*, and *Mr. Burns*. With The Civilians: *Canard Canard Goose*, *Gone Missing*, *Nobody's Lunch*, *This Beautiful City*, *In the Footprint*, *The Great Immensity*, *Paris Commune*, *Pretty Filthy*, and *The Abominables*. He was



the Artist-in-Residence and Director of the Public Forum at The Public Theater and Artistic Director of City Center Encores! Off-Center. He received the 2007 Obie Award for Sustained Excellence in Music as well as a star on the Playwrights' Sidewalk at the Lucille Lortel Theatre.

**TRIP CULLMAN** (Director) Also at Arena: *Exclusion*. Broadway: *The Rose Tattoo*, *Choir Boy*, *Lobby Hero*, *Six Degrees of Separation*, *Significant Other*. Select Off-Broadway: *I Can Get It for You Wholesale* (CSC); *Moscow Moscow Moscow Moscow Moscow*, *Yen*, *Punk Rock* [Obie Award], *A Funny Thing Happened on the Way to the Gynecologic Oncology Unit at Memorial Sloan-Kettering Cancer Center of New York City* (MCC); *Days Of Rage*, *The Layover*, *The Substance of Fire*, *Lonely I'm Not*, *Bachelorette*, *Some Men*, *Swimming in the Shallows* (Second Stage); *Unknown Soldier*, *The Pain of My Belligerence*, *Assistance*, *A Small Fire* [Drama Desk nomination], *The Drunken City* (Playwrights Horizons); *Choir Boy* (MTC); *Murder Ballad* (MTC and Union Square Theatre); *The Mother*, *I'm Gonna Pray for You So Hard* (Atlantic); *Roulette* (EST); *The Hallway Trilogy: Nursing* (Rattlestick); *The Last Sunday in June* (Rattlestick and Century Center); *Dog Sees God* (Century Center); *U.S. Drag* (stageFARM); and several productions with The Play Company. London: *The Colby Sisters of Pittsburgh, PA* (Tricycle). Select regional: Berkeley Rep, Geffen, Alliance, Old Globe, La Jolla, South Coast Rep, Bay Street, Williamstown Theatre Festival.

**PATRICK MCCOLLUM** (Choreographer) Arena Stage debut! Credits as choreographer/movement director: *The Band's Visit* (Tony Award for Best Musical 2018), *Angels in America* (Tony Award for Best Revival of a Play 2018). Other Broadway credits include *Wicked* as North American Dance Supervisor; *The Shark is Broken*; *The Lightning Thief*; *Oh, Hello!* starring Nick Kroll and John Mulaney.

Off-Broadway and Regional credits: *The Tempest* (LA Philharmonic/Old Globe); *Unknown Soldier* (Playwrights Horizons, Williamstown Theatre Festival); *To My Girls*, *Man from Nebraska* (Second Stage); *A Case for the Existence of God* (Signature Theatre); *A Marvelous Order* (Opera). As associate choreographer for Broadway/Off-Broadway: *The Last Ship* (music by Sting), *Peter and the Starcatcher*, *Rocky*, *Murder Ballad*. Love to DR for the love and encouragement. For Michael.

**JULIE MCBRIDE** (Music Supervision) is currently the music director for *Moulin Rouge!* on Broadway. Other Broadway credits: *SpongeBob SquarePants* (music director), *Ink* at Manhattan Theatre Club (music director), *Head Over Heels* (music director), *Pretty Woman* (associate conductor), *Amazing Grace* (associate conductor), *Finding Neverland* (assistant conductor). Off-Broadway/Regional: *Teeth* (Playwrights Horizons), *A Transparent Musical* (Mark Taper Forum), *Unknown Soldier* (Playwrights Horizons), *Row* (Williamstown), *Next to Normal* (Second Stage), *These Paper Bullets!* (Yale Rep, Atlantic Theater Company), *Deathless* (Goodspeed), *Miss You Like Hell* (La Jolla, Public Theater), *Daddy Long Legs* (11 regional productions). Film/TV: *West Side Story* (dir. Steven Spielberg), *Little Voice* (Apple TV+), *The Path* (Hulu), *Rise* (Amazon Prime).

**MARCO PAGUIA** (Orchestrations/Music Supervision) is a music director, arranger, orchestrator, and pianist based in New York most recently seen on Broadway in *Gutenberg! the Musical!*. He is the MD, arranger, and orchestrator of *Buena Vista Social Club*, which premiered at Atlantic Theater last winter. He music directed the Broadway productions of *Girl From The North Country*, *Peter and the Starcatcher*, and *Everyday Rapture*. Other Broadway credits include *The Wiz* (2024), *SpongeBob SquarePants*, *Sunday in the Park with George* (2017), *Tuck Everlasting*,

*If/Then*, *Women on the Verge of a Nervous Breakdown*, *The Addams Family*, and *Dirty Rotten Scoundrels*. He was the MD for *Goddess* (Berkeley Rep). Marco played on the soundtrack to Steven Spielberg's *West Side Story* with the New York Philharmonic, conducted by Gustavo Dudamel.

**CHRIS KONG** (Music Director/Conductor/Piano) [he/him] is a New York City-based pianist and music director. Most recently, Chris served as the conductor for the first national tour of *Mean Girls*. Broadway credits include *Some Like It Hot*, Disney's *Frozen*, *Mean Girls*, *Pretty Woman*, *The Prom*, *Miss Saigon*, *Allegiance*, *Kinky Boots*, and Disney's *Newsies*. Off-Broadway credits include *Little Shop of Horrors*, *Far From Heaven*, *Carrie*, *Silence!*, and *Altar Boyz*. Other tour credits include Disney's *Frozen* and *The Phantom of the Opera* (25th Anniversary). Regional work includes *Life After* (Goodman Theatre, The Old Globe) and *Allegiance* (The Old Globe). Chris is a proud member of MUSE (Musicians United for Social Equity). He is a San Francisco Bay Area native and graduate of the Conservatory of Music at University of the Pacific. "It's an honor just to be Asian." – Sandra Oh

**MARK WENDLAND** (Set Designer) Broadway: *Rose Tattoo*, *Six Degrees of Separation*, *Significant Other*, *Heisenberg*, *If/Then*, *Merchant of Venice* (Tony nomination), *Next to Normal* (Tony nomination), *Talk Radio*, *An Almost Holy Picture*, *Death of a Salesman*. New York: *The Gardens of Anuncia* (Lincoln Center); *Murder Ballad* (MTC); *The Mother* (Atlantic); *Unknown Soldier* (Playwrights Horizons); *Moscow Moscow Moscow...*, *Yen*, *Punk Rock* (MCC); *I Can Get It for You Wholesale*, *A Midsummer Night's Dream*, *Richard III*, *Hamlet* (CSC); *The Layover* (Second Stage); *The Intelligent Homosexual's Guide...*, *Satellites*, *Fucking A*, *Pericles*, *A Dybbuk*, *The Winter's Tale*, *Romeo and Juliet*, *Henry V*, *Cymbeline*, *Timon of Athens* (Public Theater); *Angels in*

*America* (Signature). Faculty: Interim Head of Design and Production, Fordham University Theater Program.

**JACOB A. CLIMER** (Costume Designer)'s recent credits include scenic and costume design for *Love for Three Oranges* (Des Moines Metro Opera) and *Hedwig and the Angry Inch* (Olney Theatre Center). Additional costume highlights include new musicals with John Kander (*Kid Victory*) and Sarah Ruhl (*Melancholy Play*) and the contemporized production of *Les Misérables* at Dallas Theater Center. Opera scenic and costume highlights include *Midsummer Night's Dream*, *Platée* (Des Moines Metro Opera), *Steve Jobs* (performed in the US and Canada, coming to DC next season), and *Flying Dutchman* (The Atlanta Opera/Cincinnati Opera/Houston Grand Opera). Jacob is also the Creative Director and costume and scenic designer for the annual Texas Rose Festival (2020-present). His work on the latter was covered by the *New York Times* Style section. [www.jaclimer.com](http://www.jaclimer.com) Instagram: @jaclimerdesign

**BEN STANTON** (Lighting Designer)'s Broadway credits include *The Notebook*, *Mary Jane*, *Days of Wine and Roses*, *Good Night, Oscar* (starring Sean Hayes), *The Collaboration*, *A Christmas Carol* (starring Jefferson Mays, TONY™ nomination), *The Rose Tattoo* (starring Marisa Tomei), *Derren Brown: Secret*, *Regina Spektor: Live On Broadway*, *Fun Home* (TONY™ nomination), *Junk* (TONY™ nomination), *Six Degrees of Separation*, *Deaf West's Spring Awakening* (TONY™ nomination), *Fully Committed* (starring Jesse Tyler Ferguson), *An Enemy of the People*, and *Seminar*. Ben serves as an Adjunct Assistant Professor at Brooklyn College, and he's the founder and principal designer at Stanton Collaborative, a full-service design firm specializing in concerts, events, and lighting installations. He lives in Brooklyn with his partner, the projection designer Lucy Mackinnon, and their two children.

**LEON ROTHENBERG** (Sound Designer) Arena: *Turn Me Loose*, *Pullman Porter Blues*. Broadway: *Hillary and Clinton*; *The Waverly Gallery*; Mike Birbiglia's *The New One*; *The Boys in the Band*; *A Doll's House, Part 2*. Off-Broadway: Playwrights Horizons, Classic Stage Company, 59E59, NYCC, Primary Stages, Second Stage, Manhattan Theatre Club, Public Theater. Regional: Arizona Theatre Company, Huntington. International: Cirque du Soleil, National Theatre of Cyprus, Dijon International Festival. Tony Award for Sound Design for *The Nance*. [klaxson.net](http://klaxson.net)

**LUCY MACKINNON** (Projection Designer) is a projection designer and video artist who lives in Brooklyn. She is a two-time Tony Award nominee whose Broadway design credits include *The Notebook*, *Kimberly Akimbo*, *A Christmas Carol*, *How I Learned to Drive*, *Jagged Little Pill*, *The Rose Tattoo*, *Lifespan of a Fact*, *Six Degrees of Separation*, and Deaf West's revival of *Spring Awakening*. As a graphic artist, Lucy has contributed to exhibitions at the New-York Historical Society and the National Center for Civil and Human Rights. She teaches projection design at Brooklyn College, and has previously taught at Ithaca College and Fordham University.

**J. JARED JANAS** (Hair, Wig, and Makeup Designer) Arena Stage: *Ride the Cyclone*. Broadway: *Mary Jane*, *Prayer for the French Republic*, *Purlie Victorious*, *Good Night, Oscar*, *Sweeney Todd*, *Ohio State Murders*, & *Juliet*, *Kimberly Akimbo*, *Topdog/Underdog*, *How I Learned to Drive*, *American Buffalo*, *Jagged Little Pill*, *Frankie and Johnny in the Clair de Lune*, *Gettin' the Band Back Together*, *Bandstand*, *Indecent*, *Sunset Boulevard*, *The Visit*, *The Real Thing*, *Lady Day at Emerson's Bar & Grill*, *Motown*, *Peter and the Starcatcher*, *The Gershwins' Porgy and Bess*, *All About Me*. Recent Off-Broadway: *Sally & Tom*, *Dead Outlaw*, *Sunset Baby*, *Jelly's Last Jam*, *Once Upon a Mattress*.

**SUSANNA WOLK** (Associate Director) is a New York-based director. She is currently the Associate Director of the hit musical & *Juliet* on Broadway. Other Broadway credits include *Waitress*, *Choir Boy*, *Lobby Hero*, *Significant Other*, and *Finding Neverland*. Favorite directing credits include Jessy Tomsco's *In Emily's Words* (Wharton Center), Justine Gelfman's *In Sisters We Trust*, or *My Fucked Up American Girl Doll Play*, Jenny Waxman and Ben Page's *Leaving Eden* (NYMF, winner Best Musical), the short film *A New Chapter*, and the 2nd National Tour of *Waitress*. BA: Harvard University. She is thrilled to be working on this wondrous show for the third time. Infinite love and gratitude to Trip, Danny, and her brilliant friends and family. [www.susanna-wolk.com](http://www.susanna-wolk.com) Instagram: @susannawolk

**FRANCINE ESPIRITU** (Associate Choreographer) couldn't be more grateful to revisit this show! Recent credits include *The Lightning Thief: The Percy Jackson Musical* (Assoc. Choreographer for Broadway, National Tour), *A Chorus Line* (Director/Choreographer at The Argyle Theatre), *A Chorus Line* (Asst. Choreographer for New York City Center, Hollywood Bowl, National Tour), *Unknown Soldier* (Assoc. Choreographer at Playwrights Horizons), *Interstellar Cinderella* (Choreographer at Theatre Row NYC). BFA in Dance Performance at University of California, Irvine. All the gratitude to Patrick, the creative team, my family, friends, MSA and M for their love and encouragement. Support the ARTS. We need it more than ever. This is for you Diana. Instagram: @francine.espiritu

**PETER LEIGH-NILSEN** (Associate Music Director) is thrilled to be joining this team at Arena Stage! Select work includes *Harmony* (Broadway, Off-Broadway), the national tours of *Dr. Seuss' How the Grinch Stole Christmas*, *Anastasia*, *The Bodyguard*, *My Fair Lady* (China), *The Producers*, *Guys and Dolls*, *Bring It On: The Musical*

(US, Japan), *Dreamgirls* (China), and *Aida* (Taiwan). He has recorded on OBC albums for Sony Masterworks (*Grinch*) and Ghostlight Records (*Harmony*).

**OTIS RAMSEY-ZÖE** (Dramaturg) is a care worker, dramaturg, director, theater arts educator, and Literary Manager at Arena Stage. He has developed new works at such institutions as Sundance Institute, Kennedy Center, Alabama Shakespeare Festival, Playwrights Center, and National New Play Network. He has held posts in Dramaturgy at the David Geffen School of Drama at Yale and Carnegie Mellon University, Theatre at Northeastern University, Women's Studies and Honors Humanities at University of Maryland, Performing Arts at American University, and Theatre Arts at Howard University. He was Associate Artistic Director at banished? productions, Future Classics Program Coordinator at The Classical Theatre of Harlem, Literary Manager at Center Stage, and an Allen Lee Hughes Senior Fellow at Arena Stage.

**JOSEPH PINZON** (Casting Director) is the founder and creative producer of the contemporary circus company Short Round Productions and its award-winning show *Filament*. With over 25 years of performing experience, he has worked internationally with renowned companies such as Cirque Éloize, Compagnia Finzi Pasca, Cirque du Soleil, and The 7 Fingers. He holds an MS in Arts Leadership from USC, a BA in Psychology from UCLA, and graduated from the National Circus School in Montreal with a specialization in aerial techniques. He was the casting and resident director for Chamäleon Productions (Berlin) and Constellation Immersive (CAA's experiential affiliate). He is also a member of the Creative & Independent Producer Alliance and a founding board member of the American Circus Alliance. You can see him causing chaos on season 6 of *Nailed It!* on Netflix, where (spoiler alert) he is a part of the series' first three-way tie.

**THE TELSEY OFFICE** (New York Casting) With offices in both New York and Los Angeles, The Telsey Office casts for theater, film, television, and commercials. The Telsey Office is dedicated to creating safe, equitable, and anti-racist spaces through collaboration, artistry, heart, accountability, and advocacy. [thetelseyoffice.com](http://thetelseyoffice.com)

**LISA ANN CHERNOFF** (Stage Manager) Broadway: *Once Upon a One More Time*, *The Great Society*, *My Fair Lady*, *Oslo*, *The King and I*, *Bridges of Madison County*, *Golden Boy*, *Catch Me If You Can*, *Women on the Verge...*, *Ragtime*, *Shrek*. San Francisco: *Harry Potter and the Cursed Child*. National Tour: *Spamalot*. Off-Broadway: *Unknown Soldier*; *Pocatello*; *Detroit*; *Rapture*, *Blister*, *Burn*; *Prayer for My Enemy* (Playwrights Horizons); *Spain* (Second Stage); *Mary Jane* (NYTW); *Kingdom Come* (Roundabout); *The Model Apartment* (Primary Stages). Regional: Pasadena Playhouse, Shakespeare Theatre Company, Long Wharf, Intiman, Seattle Rep, Shakespeare Santa Cruz.

**DAYNE SUNDMAN** (Assistant Stage Manager) is happy to be back at Arena Stage. Some favorite past shows at Arena include *POTUS*; *Angels in America: Part One*, *Millennium Approaches*; *American Prophet: Frederick Douglass in His Own Words*; *Catch Me If You Can*; and *Anything Goes*. Select other credits include *Jane Anger*, *The Notebooks of Leonardo Da Vinci* (STC); *Murder on the Orient Express* (Great Lakes Theater); *Natasha, Pierre & The Great Comet of 1812*, *Sense and Sensibility* (Idaho Shakespeare Festival). Baldwin Wallace University 2015.

**HUNTER ARNOLD** (Producer) Select Broadway: *Hadestown* (Tony), *Moulin Rouge!* (Tony), *The Inheritance* (Tony), *The Heart of Rock and Roll*, *Cabaret*, *The Notebook*, *A Beautiful Noise*, *Back to the Future*, *Purlie Victorious*, *Dear Evan Hansen* (Tony), *A Doll's House*, *Company* (Tony), *A*



*Strange Loop* (Tony), *Kinky Boots* (Tony), *Once on This Island* (Tony). Select West End: *Cabaret* (Olivier), *Hadestown*, *Plaza Suite*, *Back to the Future* (Olivier), *The Inheritance* (Olivier), *Kinky Boots* (Olivier). Select Off-Broadway: *Little Shop of Horrors*. Instagram: @huntercarnold

## ARENA STAGE LEADERSHIP

**HANA S. SHARIF** (Artistic Director) has enjoyed a multi-faceted theater career, including roles as an artistic leader, director, playwright, and producer with a specialty in strategic and cross-functional leadership. Hana began her professional career as an undergraduate student at Spelman College. From 1997 to 2003, Hana served as the co-founder and Artistic Director of Nasir Productions, a theater dedicated to underrepresented voices challenging traditional structure. Hana joined the Tony® Award-winning regional theatre, Hartford Stage, in 2003. During her decade-long tenure at Hartford Stage, Hana served as the Associate Artistic Director, Director of New Play Development, and Artistic Producer. Hana launched the new play development program, expanded the community engagement and civic discourse initiatives, and developed and produced Tony®, Grammy, Pulitzer, and Obie Award-winning shows. Starting in 2012, she served as Program Manager at ArtsEmerson, a leading world theater company based at Boston's Emerson College. During her tenure at ArtsEmerson, Hana launched an Artists in Residency program, led a research program assessing barriers to inclusion across the region, and leveraged her regional theater experience to freelance produce for smaller theater companies

looking to expand and restructure their administrative teams. Hana was Baltimore Center Stage's Associate Artistic Director from 2014 to 2019 and was the architect of the innovative CS Digital program: a platform that pushes the boundaries of traditional theater and looks at the nexus point between art and technology. Her other achievements at Baltimore Center Stage included prototyping the Mobile Unit focused on historically underserved audiences, strengthening community engagement, producing multiple world and regional premieres, and helping to guide the theater through a multi-million dollar building renovation and rebranding effort. Hana became the first Black woman to lead a major regional theater in 2018 when she was named the Augustin Family Artistic Director of The Repertory Theatre of St. Louis. During her tenure at The Rep, Hana guided the organization through a strategic alignment, revolutionized the New Works program, expanding access to underserved communities, and centering equity and anti-racism as the organization's foundational values. Hana holds a BA from Spelman College and an MFA from the University of Houston. Hana is the recipient of USITT's 2023 Distinguished Achievement Award, Spelman's 2022 National Community Service Award, the 2009-10 Aetna New Voices Fellowship, EMC Arts Working Open Fellowship, and Theatre Communications Group (TCG) New Generations Fellowship. Hana is a founding member of The Black Theatre Commons (BTC). She serves on the board of directors for the TCG, BTC, and the Sprott Family Foundation.

**EDGAR DOBIE** (Executive Producer) Born in Vernon, British Columbia, a village next to the Rocky Mountains (three years after Arena had its first performance in 1950), I am one of five brothers raised by my Dad Edgar, a mechanic and small businessman, and Mom Connie, a telephone operator and union organizer. I am the only Dobie to make a career in theater. Luckily for me,

drama was an arts elective I was offered at the tender age of 12 so I hung up my hockey skates and joined the drama class, led by teacher Paddy Malcolm and her fledgling Powerhouse Community Theater after school. By the time I graduated from high school, we volunteers had built ourselves a 200-seat, fully equipped theater on its own piece of land in the center of town and found a sold-out audience for the full season of plays we had on offer. That experience taught me so many lessons about the power of theater to foster collaboration and share meaningful stories, as well as the public values that attach themselves to building a safe place where everyone is welcome. All those lessons served me well as a managing leader and producer both sides of the border and both sides of the commercial and non-profit theater divide. Arriving here in Southwest with my good wife Tracy and our daughter Greta Lee in 2009 makes me feel like I am well-equipped to do a good job for you all. I am honored to

have been recognized for my service to, and leadership of, the Washington, D.C.-area theater community as a recipient of Theatre Washington's inaugural Victor Shargai Leadership Award in 2022.

This theater operates under an agreement between the League of Resident Theatres and Actors' Equity Association.



The actors and stage managers are members of Actors' Equity Association, the Union of Professional Actors and Stage Managers in the United States.



The scenic, costume, lighting and sound designers in LORT theaters are represented by United Scenic Artists, Local USA-829 of the IATSE.



The Director and Choreographer are members of the STAGE DIRECTORS AND CHOREOGRAPHERS SOCIETY, a national theatrical labor union.



The musicians in this production are represented by the Metropolitan Washington D.C. Federation of Musicians, AFM Local 161-710.

Arena Stage is a constituent of the Theatre Communications Group (TCG), the national organization for the American theater.



## BOOK YOUR NEXT CELEBRATION AT THE MEAD CENTER

[rentals@arenastage.org](mailto:rentals@arenastage.org) | [arenastage.org/rentals](https://arenastage.org/rentals)





# We Share Your Dream for the Future

Powering our communities is just the beginning. At Exelon, we consider it our responsibility to improve the quality of life for people in the communities where we live, work and serve. Participation in good corporate citizenship is an integral part of our culture, and we inspire our employees to help everyone succeed.

## BOARD OF TRUSTEES / YOUNG PATRONS BOARD

### ARENA STAGE BOARD OF TRUSTEES 2023/24

#### CHAIR

Catherine  
Guttman-McCabe

#### VICE CHAIRS

S. Decker Anstrom  
Judith N. Batty  
Michele G. Berman  
Jeffrey M. Busch  
Edgar Dobie  
Kristen Donoghue  
Rick Froehlich  
Nicholas Goad  
Sue Henry  
Alethia Jackson  
Richard A. Newman  
David E. Shiffrin  
Michele P. Toth  
Shawna Watley

#### TRUSTEES

Jan Adams  
Andrew R. Ammerman  
Linda A. Baumann  
Deborah Bowles  
Susan Carter  
Celandra Deane-Bess  
Joseph P. DiGangi  
Jeri Epstein  
Richard Feinstein  
David Fisher  
Stephenie Foster  
Dr. Donald Wallace Jones  
Ricki Kanter  
Elissa Leonard  
John Lynham  
B. Thomas Mansbach  
David B.H. Martin  
Jill McGovern  
Robert Pincus  
Ilene Rosenthal  
Tiffany Sanchez  
Hana S. Sharif  
Mignon Smith  
Sheila Stampfli  
Michael S. Steele

#### HONORARY TRUSTEES

Jim Abdo  
Ashok Bajaj  
Joanne Barker  
Sander Bieber  
Steven R. Bralove  
Susan Haas Bralove  
Eric Braverman  
John Edelmann  
Elliot Feldman  
Nancy M. Folger  
Natwar Gandhi  
Patti Herman  
Vicki J. Hicks  
Daniel Korengold  
Judy Lansing Kovler  
Mark Levine  
Ronald A. Paul M.D.  
Terry R. Peel  
Beverly Perry  
Lucia Riddle  
Gene Samburg  
Raymond Sczudlo  
David Bruce Smith  
Richard W. Snowdon  
Margaret Tomlinson

#### LIFE TRUSTEES

Lee G. Rubenstein  
Beth Newburger Schwartz

#### YOUNG PATRONS BOARD TRUSTEE

Whitney Hubbard

#### EMERITUS TRUSTEES

John M. Derrick  
Arlene and Robert Kogod  
David O. Maxwell  
Joan P. Maxwell  
Judy Lynn Prince,  
in memoriam

#### CORPORATE OFFICERS

**PRESIDENT**  
Edgar Dobie

**TREASURER**  
Joe Berardelli

**SECRETARY**  
Alison Irvin

### YOUNG PATRONS BOARD 2023/24

The Arena Stage Young Patrons Board seeks to strengthen and support the future of American theater at Arena Stage. The Young Patrons Board supports the artistic mission of Arena Stage by being active ambassadors to the community and arranging opportunities for people under 40 years old to engage with the theater.

#### MEMBERS

Julie Alderman Boudreau  
Victoria Clark  
Alexandria Edwards  
Shoshana Golden  
Whitney Hubbard  
Linda Irizarry  
Lucrecia Johnson  
Ashley Lawrence  
Lauren Pate  
Emily Rouse  
Hillary Stemple  
Dr. Adrienne Thompson  
Michael Walker

### THE MOLLY SMITH FUND FOR NEW WORK

The Molly Smith Fund for New Work was created to honor the tremendous legacy of Molly Smith, Arena Stage's Artistic Director Emeritus, who retired at the end of the 2022/23 Season after 25 years of visionary leadership. The fund will support the artistic development of new work at Arena Stage, a pillar of Molly's vision.

Thank you to the following donors who supported this initiative through their philanthropic leadership.

Jan Adams	Sue Henry and Carter Phillips
Altria	JMA Solutions
Amaris	Arlene and Robert Kogod
Decker Anstrom and Sherry Hiemstra	Danny Korengold and Martha Dippell
Joanne Barker and The Jake Foundation	Melanie Franco Nussdorf
Michele and Allan Berman	Marsha and Alan* Paller
Diane and Norman Bernstein Foundation	Craig Pascal
Susan and Steven Bralove	Ourisman Automotive of Virginia
Elliot J. Feldman and Lily Gardner Feldman	Tiffany Sanchez and Reg Brown
G. David Fensterheim and The Joseph E. Robert Jr. Charitable Trust	Beth Newburger Schwartz
Patricia and David Fisher	Peggy and David Shiffrin
Rick and Carol Froehlich	Dr. and Mrs. Mark Shugoll
Michael Glosserman	Katie and Dick Snowdon
Hamilton and Marchand families in honor of Ann Hamilton	John and Cindy Weber
	George and Patti White
	Sandy and Jon Willen

Today is the day to  
inspire, delight  
and amaze.



We're proud to support Arena Stage and the joy you bring to our community every day.

[pnc.com](https://pnc.com)



©2022 The PNC Financial Services Group, Inc. All rights reserved. PNC Bank, National Association. Member FDIC  
CON PDF 0618-0106

## THANK YOU

### FULL CIRCLE SOCIETY—ARENA STAGE'S PLANNED GIVING PROGRAM

Arena Stage gratefully acknowledges these individuals who ensure the future of Arena Stage by making a planned gift. These gifts assure that Arena Stage will continue to challenge, educate and entertain audiences, and maintain its excellence in theater nationally, and internationally for generations to come.

Arena can help you accomplish your personal, family and philanthropic goals while benefiting the theater. Supporters who make planned gifts to Arena are invited to join the Full Circle Society and enjoy special benefits.

For more information about planned giving, please contact Maya Weil at 202-600-4158.

The following are members as of February 28, 2024.

#### MEMBERS

Anonymous (13)  
Esthy\* and Jim Adler  
Dr. Bill Santford Ashley  
Elinor R. Bacon  
Linda A. Baumann  
Nan Beckley  
Sue Benson  
Diane Boehr  
Steven Bralove  
Dr. Robert and Mary Jo Brenner  
Bonnie and Jere Broh-Kahn  
Louise Budelis  
Donald Burch, III  
James C. Burks and  
Dr. Bette Jane Pappas  
Anne L. Buzalski  
John P. Cahill  
Ellen MacNeille Charles  
Donald J. and Anita P. Cowan  
Captain Joan Darrah and  
Ms. Lynne Kennedy  
Martin Alan "Marty" and  
Belle Negrin Davis  
Joseph P. DiGangi  
John Edelmann and Jeffrey Love  
Vivian B.\* and Lisa D. Eggers  
Barbara B. Ehrlich  
Jeri and Gary Epstein  
Skip and Laurette Farmer  
Nancy M. Folger  
Catherine F. and  
James F.\* Fort, Sr.  
Larry Franks and Ellen Berelson  
Becky Fredriksson  
Dr. Helene C. Freeman  
Arlene Friedlander  
Rick and Carol Froehlich  
Steven Garron  
Jon K. Gossett and  
Alex Urdaneta  
Bob Gronenberg  
Catherine and  
Christopher Guttman-McCabe  
Chris Harris  
Betty Hawthorne  
Dr. JC Hayward  
Vicki J. Hicks  
Richard and Pamela Hinds

Sallie L. Holder  
Lauren and Glen Howard  
Ann Ingram  
David Insinga and Robert McDonald  
Thomas Jesulaitis  
James Johnson and  
Matthew Shepard  
Drs. Susan and Perry Klein  
Dr. Seth A. Koch and  
Barbara Bellman Koch  
Patricia and John Koskinen  
Justin Latus  
Thelma K. Leenhouts  
Herb and Dianne Lerner  
Carol Ann and Kenneth Linder  
John and Patricia Long  
John and Lenora Lynham  
Sandra L. Mabry  
Alison Masters MacTavish  
Wells R. McCurdy  
Alfred Munzer and Joel Wind  
Jeannette Murphy  
Paul and Nancy Newman  
Marina and David Ottaway  
Laura Peebles  
Amy Phillips  
Robert Pincus  
Michael and Penelope Pollard  
Mr. and Mrs. Thomas J. Reckford  
Paul Rose  
Richard Schwartz\* and  
Beth Newburger Schwartz  
Larry Shaw and Richard Freitag  
David E. Shiffrin  
Mark and Merril Shugoll  
Mike and Patti Sipple  
Leonard Sirota, Eileen Ivey and  
Rachel Sirota  
Molly Smith and  
Suzanne Blue Star Boy  
Dick and Katie Snowdon  
Sheila A. Stampfli  
Aileen and Jack Sullivan  
Terri L. Tedford  
Helene Toiv  
Margaret L. Tomlinson  
Maya Weil  
Val and John Wheeler

#### BEQUESTS AND GIFTS IN REMEMBRANCE

Estate of Dr. and Mrs.  
Clement C. Alpert  
Estate of H. Max and  
Josephine F. Ammerman  
Estate of Jan Ellen Balkin  
Estate of Audrey J. Barnett  
Estate of Harry J. Boissevain  
Estate of Henrietta T. Braunstein  
Estate of Dorothy A. Bunevich  
Estate of Marylou Calene  
Estate of Patricia Carroll  
Estate of Albert Chaiken  
Estate of Helen G. Coddling  
Estate of Marcus Cohn  
Estate of Israel and  
Augusta Convisser  
Estate of Camille Cook\*  
Estate of Robert D. Davis Jr. and  
Henry J. Schalizki  
Estate of Mr. William E. Faragher  
Estate of Zelda Fichandler  
Estate of Donald H. Flanders  
In Memory of Helen W. and  
Felix E. Geiger  
Estate of Ann Gibbons  
Estate of Ezra Glaser  
Estate of George Grizzard  
Estate of Margaret M. Hansen  
Estate of Giselle Hill  
Estate of Joan E. Kain  
Estate of Margot Kelly  
In Memory of Jean Russ Kern and  
Jeannette G. Kern  
Estate of Herbert A. Lindow  
Estate of LaRue R. Lutkins  
Estate of Marianne R. Phelps  
Estate of Suzy Platt  
Estate of Judy Lynn Prince  
Estate of Ms. Jane Rissler  
Estate of Toni A. Ritzenberg  
Estate of Gruine Robinson  
Estate of Hank Schlosberg  
Estate of Eugene Schreiber  
Estate of Helga Tarver  
Barbara R. Walton Endowment Fund  
for New Playwrights  
Estate of Eric Weinmann  
Estate of Frankie and Jerry Williamson

## OUR INDIVIDUAL DONORS

Arena Stage gratefully acknowledges the many individuals and families who support the theater's work by contributing to the Annual Fund. These gifts make it possible for the theater to continue presenting high-quality productions and innovative education programs that strengthen the community in which we live.

For more information on the benefits of becoming an Annual Fund contributor, please call the Development Department at 202-600-4177.

The following are members as of February 28, 2024.

### OVATION CIRCLE

Anonymous (1)  
Decker Anstrom and  
Sherry Hiemstra  
Drs. Elliot J. Feldman and  
Lily Gardner Feldman  
Margot Kelly\*  
Arlene and Robert Kogod  
Judy Lynn Prince\*  
Tiffany Sanchez and  
Reg Brown  
Beth Newburger Schwartz and  
Richard Schwartz\*

### FOUNDER'S CIRCLE

Andrew R. Ammerman  
Reinsch Pierce Family  
Foundation by  
Lola C. Reinsch  
Toni A. Ritzenberg\*  
Mr. and Mrs.  
Richard W. Snowden

### BENEFACTOR'S CIRCLE

Anonymous (1)  
Joanne Barker and the  
JAKE Foundation  
Linda A. Baumann  
Michele and Allan Berman  
Susan and Steven Bralove  
William Caldwell and  
Michele Toth  
Pam and Richard Feinstein  
Bonnie Feld  
Mr. and Mrs. David Fisher  
Rick and Carol Froehlich  
Chris and Catherine  
Guttman-McCabe

Sue Henry and Carter Phillips  
Dr. Donald Wallace Jones,  
Dr. Betty Jean Tolbert Jones  
and Tracey Tolbert Jones  
Mr. and Mrs. Daniel Korengold  
Herb and Dianne Lerner  
The Revada Foundation  
of the Logan Family  
B. Thomas Mansbach  
David and Martha Martin  
Mr. and Mrs. Robert P. Pincus  
Joe Reef, Peter Nguyen and  
the Reef Team of  
TTR Sotheby's

Ilene and Steven Rosenthal  
Gene Samburg  
Sheila Stampfli

### LEADERSHIP CIRCLE

Anonymous (1)  
Janice Adams  
Judith N. Batty  
Jeff Busch  
Susan Carter  
Celandra Deane-Bess  
Deborah Bowles  
Joseph P. DiGangi  
Edgar and Tracy Dobie  
Kristen Donoghue and  
Jon Hacker  
Jeri and Gary Epstein  
Stephanie Foster  
Larry Franks and  
Ellen Berelson  
Henock Gebreamlak and  
Nicholas Goad  
Alethia Jackson

Ricki and Joel Kanter  
Judy and Peter Blum Kovler  
Foundation  
Nancy and Dan Longo  
John and Lenora Lynham  
Dr. Jill E. McGovern  
Richard and Janice Newman  
Melanie and Larry\* Nussdorf  
Craig Pascal and  
Victor Shargai\*

Peggy and David Shiffrin  
David Bruce Smith and  
the Grateful American  
Foundation  
Mignon and Kebharu Smith  
Hon. Michael Steele  
Shawna Watley

### PRESIDENT'S CIRCLE

Erin and Derek Arrison  
Eric Braverman and  
Neil Brown  
Ellen MacNeill Charles  
Daniel Hamilton  
Patti and Mitchell Herman  
Evan Herschel  
Kimberly Hulsey in memory of  
Shirley Shorter  
Sheldon and Audrey\* Katz  
Mark T. Lewellyn  
The Robert and Natalie  
Mandel Family Foundation  
Doris Matsui and Roger Sant  
Janis Reed and Jack Requa  
R. Lucia Riddle  
William and Linda Rule

Thalia Sinnamon in memory of  
Lyn Sinnamon  
Leonard Sirota and  
Eileen Ivey  
Peggy and Alec\* Tomlinson  
Jon and Sandra Willen

### PRODUCER'S CIRCLE

Anonymous (1)  
Jim and Mai Abdo  
Keith and Celia Arnaud  
Dr. Sharon A. Bennett  
Connie Carter and  
Gordon Dale  
John Chester  
Richard H. Cleva  
John and Linda Derrick  
Kathy and Jody Dreyfuss  
John Edelmans and  
Jeff Love

Nancy M. Folger  
Rachel Frankeny  
Woolf Gross  
Meg and John Hauge  
Donald E. Hesse and  
Jerrilyn Andrews  
Kimberly and Randy Smith  
Thomas Jesulaitis and  
Barrie Seidman  
Dr. James and  
Deborah Karehs  
Caroline S. Klemp  
Mark Levine and  
Sara Imersheim  
Charles McBride and  
Margaret DeBell  
Ray Olson

Toni and Ronald Paul  
Beverly Perry  
Margaret Ann Ross  
Dr. and Mrs. Gene Simaitis  
William Spears  
Allison Thomas  
Suzanne Thouvenelle and  
Dennis Deloria  
Bill and Terry Witowsky  
Judy and Leo Zickler

### DIRECTOR'S CIRCLE

Anonymous (3)  
Leon and Robyn Andris  
Dr. and Mrs. C. Wrangle Barth  
Nan Beckley  
Sander M. Bieber and  
Linda E. Rosenzweig  
James and Priscilla Blum  
Constance Bohon MD  
Joe and Sue Bredekamp  
Bonnie and Jere Broh-Kahn  
Arlene Brown and  
Eugene Bialek  
Susan and Dixon Butler  
Blain and Peg Butner  
Bonnie C. Carroll and  
Roy Cooper  
Debbie and Adam Cohen  
Beth Cunningham and  
David Wolfe  
James and Dorothy Dake  
Belle N. Davis in memory of  
Martin "Marty" Davis  
Vivian B.\* and Lisa D. Eggers  
Katherine Ann Gardner  
Bill and Linda Garvelink  
Lenue and Barbara Gilchrist  
Amnon and Sue Golan  
Michael Greenbaum and  
Sherry Liebes  
Susan B. Haight  
Laura Hart  
Shelly and Jack Hazel  
Vicki J. Hicks  
Martin and Nene Hill  
Theo W. Hodge Jr., MD and  
Frederick Eugene Taylor, Jr.  
David Insinga and Robert  
McDonald

Knight Kiplinger  
Leslie S. Kogod  
Jean and John Lange  
Thelma K. Leenhouts  
Steve Mayer and  
Vera Oye\* Yaa-Anna  
Richard and Erin Mills  
Alfred Munzer and Joel Wind  
Meenakshi and  
Arvind Nandedkar  
Joe Oppenheimer and  
Edith Fraser  
Marina and David Ottaway  
James T. Parson, Jr.  
Dave Pawlik and  
Susan Albertine  
Laura Peebles and  
Ellen Fingerman  
Ann and Terry R. Peel  
Margaret Pollack and  
Paula Reed Lynch

Mr. Michael Pollard and  
Mrs. Penelope Pollard  
Gail Povar and Larry Bachorik  
Franklin D. Raines and  
Denise Grant  
Margaret Rice and Bill Sette  
Talmadge Roberts and  
Mary E. Roberts  
British Robinson  
Jill and Rick Robinson  
Jean Schiro-Zavela and  
Vance Zavela  
Raymond and  
Deborah Sams Sczudlo  
Ruth and Arne\* Sorenson  
Annelise and Robert H. Smith  
Judi and Richard Sugarman  
Aileen and Jack Sullivan  
Dr. and Mrs.  
Harvey Sweetbaum  
Keith and Jeanie Thackrey  
Laura L. Tosi  
Virginia D. Weber  
Patricia Page Williams  
Richard and  
Leslie Wojciechowicz  
Deborah and David Yaffe  
Jane Yanulis  
David and Linda Young

### PLAYWRIGHT'S CIRCLE

Anonymous (8)  
General Clara Adams-Ender  
Julie Alderman Boudreau  
The Estate of Dr. and Mrs.  
Clement C. Alpert  
Dean Amel and Terry Savella  
Tom and Loretta Beaumont  
Barbara Benoit  
Robert C. and  
Elissa B. Bernius  
David and Judy Bonior  
Rita Braver Barnett  
Lucille A. Bland  
Candice C. Bryant  
Wes Callender and  
Mary Davis  
William and Kathleen Carey  
Dr. Myla Carpenter  
Gail Chambers and  
Scott Baker  
Nancy Chesser and  
J.M. Rowe  
Lynne H. Church  
Karen and Joseph Coleman  
Wilson Compton  
Annemargaret Connolly and  
Kenneth Frank  
Mr. Michael Crosswell  
Valerie and John Cuddy  
Lorraine Day  
The Charles Delmar  
Foundation  
Angela Dickey and  
Patricia Norland  
Patricia L. D'Orazio  
Dr. Alexandria Edwards  
Barbara and David Ehrlich  
Geraldine Feaster and  
Calvin Bethea\*  
Peter and Alison Fenn

Trudy Fleisher  
Lorraine Fleming and  
Harry Parrish  
Mr. and Mrs. Michael Flyer  
Robert and Carole Fontenrose  
Ellen Fox MD  
The Henry J. Fox Trust  
JoEllen and Martin Frost  
Mr. and Mrs.  
Davis R. Gamble Jr.  
Gregg H. S. Golden  
A. Steven and Janet Hall Graff  
Linda Griggs and Bill Swedish  
Carol and Bill Gross  
Dr. Martha Gross and  
Mr. Robert Tracy  
Gail Gulliksen  
Ellie and John Hagner  
Honorable Robert and  
Susan Hale  
Richard E. Hardy  
Patricia Harvey  
Doris Hausser  
Lydia Jean Herz and  
Daniel Felger  
Lucia and Fred Hill  
Richard and Pamela Hinds  
Judy Honig and  
Stephen Robb  
Lauren and Glen Howard  
Whitney Hubbard  
Linda Irizarry  
John Iwaniec and Tracy Gray  
Harolyn and William Jackson  
Jason Johnston  
John Keator and  
Virginia Sullivan  
Cal and Barbara\* Klausner  
Kenneth and Carol Doran Klein  
Tuke and Pierce Klemmt  
Lauren S. Kogod  
Patricia and John Koskinen  
Teresa and Richard Kramer  
Barry Kropf  
Mr. and Mrs. William LaChance  
Stuart and Brock Lending  
Dr. and Mrs. Randall J. Lewis  
Robert Liberatore and  
Debra Kraft  
Susan and Dan Mareck  
Vicky Marchand  
Ms. Linda Marks and  
Mr. Rafael V. Lopez  
Lorraine and Craig Martin  
Mary Martin  
Marlene Mayo  
Mark and Marsha Mazz  
Susan Hall McCannell  
Valerie McCauley  
Robert and Joelen Merkel  
Leigh Method  
Dr. Florence K. Millar  
Nancy Miron  
David Montgomery  
Martha Newman  
Frank and Linda Nutter  
Dr. Kay Oliver  
Anne Paine and Fowler West  
Mr. and Mrs. P. David Pappert

Lauren Pate  
Howard and Dorothy Pedolsky  
Mazel Pernell  
Randolph Perry  
Paula and William Phillips  
Ane Powers  
Dr. and Mrs. Nathaniel Pitts  
Lutz Prager and Pat Lark\*  
Mr. and Mrs.  
Thomas J. Reckford  
Nancy Regan  
Deborah Remmers  
Massimo and Marilou Righini  
Barbara Riley  
Bill and Donna Roberts  
Michael P. Rogan and  
Susan Schaffer  
Gareth Rosenau  
Bruce and  
Lori Laitman Rosenblum  
Blair and Sally Ruble  
Cathy Rutherford and  
Lisa Levine  
Fern Flanagan Saddler  
Jo Ella Samp  
Jeff and Ellen Sandel  
Linda and Arthur Schwartz  
Carol Schwartz  
McAdo Shuler, Jr.  
Richard and  
Jacqueline Sellers  
Lisa and Jim Shannon  
Mark and Merrill Shugoll  
Bobbi and Larry Shulman  
Toby A. Silverman  
Mike and Patti Sipple  
Laura Smalligan and  
Eric Sandberg-Zakian  
Carl Wayne Smith and  
Michael Burke  
Lawrence and Arlene Spinelli  
Cecile Srodes  
Robert J. Surovell  
Eileen and Michael Tanner  
Linda and Steuart Thomsen  
Barbara Toohill  
Judge and Mrs.  
James T. Turner  
Mary Vavrina  
Glenn Westley and  
Jeanne Holzgreffe  
John and Val Wheeler  
Jack and Sue Whitelaw  
Richie and Jim Wright  
Robert and Anne Yerman  
Michael Zachau Walker

### LEAD

Anonymous (9)  
Nora Abramson and  
Dave Nathan  
Dr. and Mrs. Nelson Adamson  
Garland Allen  
Jenna and Bill Allen  
Virginia Anthony  
Friend of Arena  
Kathleen and  
Lawrence Ausubel  
Dr. John Bailey and  
Mrs. Juanita O. Coye Bailey  
Michael Baker

## YOU MAY PLAN TO LIVE UNTIL YOU'RE 150—AND WE HOPE YOU DO—BUT YOU STILL NEED AN ESTATE PLAN!

Everyone needs an estate plan to ensure their assets benefit the people and causes they value the most. Please consider leaving a gift in your will or designating Arena as a beneficiary of your retirement plan or Donor Advised Fund to help future generations enjoy theater. If you have already included Arena, let us know so we can include you in the Full Circle Society.

For more information, contact Maya Weil, CAP®,  
Arena's Gift Planning Specialist at 202-600-4158  
or mweil@arenastage.org

The cast of *The Pajama Game*. Photo by Margot Schulman.





Anna K. Behrensmeyer  
 Ronald Bailey and  
 Pamela Friedman  
 Sue Benson  
 Carl and Courtney Bergeron  
 Dava Berkman  
 Tom Blackburn  
 Marc Blakeman  
 Elizabeth L. Blakeslee  
 Gretta Blatner  
 Richard and Eleanor Bochner  
 Dr. and Mrs. Gerald Borsuk  
 Anne Boyden  
 Ms. Carolyn Broussard  
 Harold R. Bucholtz  
 Patricia and Mike Burke  
 Leslie Calman and  
 Jane Gruenebaum  
 Ms. Patricia Carter  
 Henry Chamberlain and  
 Lisa Burns  
 Jo Ann Chin  
 Ken and Lynne Cline  
 Francis and Terry Coates  
 The Manny and Ruthy Cohen  
 Foundation  
 Pamela Colbert  
 Brian Cooke  
 Deanna K. Dawson  
 Nancy Dawson  
 Don Douglas and  
 Carlyne Weil\*  
 Sue Duncan and Leo Fisher  
 Mrs. Elizabeth Edgeworth  
 Dr. James Ellzy and  
 Mr. Francis O'Malley  
 David and Ana Evans  
 Gary Felser  
 Herbert and  
 Amy C. Gilbert  
 Mark\* and Sara Goldberg  
 John M. Goodman  
 Bob Gronenberg  
 Tim and Norene Guilford  
 Jack E. Hairston Jr.  
 Robert and Carol Hall  
 Chris Harris  
 Mr. Lars Hanson and  
 Ms. Rosanne LeVitre  
 Ms. Margaret Hennessey  
 Shawn C. Helm and  
 J. Thomas Marchitto  
 Mr. Jonathan A. Herz  
 Jessica Hirschorn and  
 Henry Howard, Jr.  
 Clarence G. Hoop  
 Paul and Bonnie Hopler  
 Drew Huffman  
 Patricia Jackman and  
 Stephen L. John  
 Martha L. Kahn and  
 Simeon M. Kriesberg  
 L. Kempner  
 Kyle Kerr and Stephen Bique  
 Kathleen Knepper  
 Ms. Jane Mary Kwass  
 Jane Lang  
 Richard and Cecilia Larkin  
 Elaine R. Leavenworth  
 Carol Ann and Kenneth Linder

Albert L. and  
 Doris M. Lindquist  
 Mrs. E. Kathleen Linville  
 Jim and Sharon Lowe  
 Kenneth C. and  
 Elizabeth M. Lundeen  
 Captain Lory Manning  
 USN (RET)  
 Joanne S. Martin  
 Lou Mazeway  
 Sarah McMeans  
 David Mitchell  
 Robin Mockenhaupt and  
 Ralph Popp  
 Steve and Sylvia Moore  
 Stephen H. Morris and  
 Jill L. Clark  
 Carol Mucha  
 Donald and Lynne Myers  
 Jeffrey Neal and Kevin Loeffler  
 William and Louisa Newlin  
 John and Carol Noble  
 R. Frances O'Brien and  
 Stephen Flott  
 Doris Parker and Michael  
 Spatz  
 Stan Peabody  
 Scott Pearson  
 Liz Pennisi and Matt Butcher  
 Anne E. Peret  
 Judy Perry, Col (USAF Retired)  
 Randy and Kathy Pherson  
 Wayne and Ursula Quin  
 Carroll Quinn  
 Clyde Relick and Julie Davis  
 Christopher Robinson  
 June A. Rogul  
 Charles Rohe  
 Herbert and  
 Nancy Rosenthal  
 Helen Ross  
 Dr. Bernard and  
 Louise Rostker  
 Trina and Lee Rubenstein  
 Alan and Florence Salisbury  
 Jean Sammon  
 Molly Smith and  
 Suzanne Blue Star Boy  
 Patricia Stonesifer and  
 Michael Kinsley  
 Judi and Richard Sugarman  
 Dr. Sheila Taube  
 Elizabeth and Jerome Teles  
 Douglas Trainum in memory of  
 Peggy Laves Trainum  
 Dr. Carolyn Peoples Veiga  
 Roger and Diane Warin  
 Cameron and  
 Susan Weiffenbach  
 Deborah V. Weinstein  
 Robert Wilson

#### SUPPORTING ROLE

Anonymous (II)  
 Susan Absher  
 Hon. Frank and  
 Mrs. Antoinette Almaguer  
 Tonia and Scott Anderson  
 Victoria Arana  
 Betty Arbuckle and  
 Chuck Taylor

Ramona Arnett  
 Marion S. Ballard  
 Mary Barton and  
 Beth Biegelsen  
 Janet and David Batlan  
 Ted Bean and Kathy Brown  
 John and Sylvia Benoit  
 Ann Blackman and  
 Michael Putzel  
 Mr. Edward Blanton and  
 Mr. Rustyll Lynn  
 Alex Bogdanovsky and  
 Elena Shtern  
 Nettie Bouchie  
 Randall A. Bowman  
 Cynthia Boyer\*  
 Sandra Bremer and Al Mears  
 Valerie Briggs and Peter Kelley  
 Hazel Broadnax  
 Diane Brown  
 Richard Allen Brown  
 Mr. and Mrs. William F. Brittle  
 Yvette Benton Bullock  
 S. M. Bumbrey  
 Cynthia Bunton  
 David M. and Susan F. Burke  
 Avery Burns  
 Donna Butts and William Libro  
 Sandra and Paul Byrne  
 Marni Byrum and  
 Martha McQuade  
 John Cahill  
 Jason and Ashley Campbell  
 Carla Cartwright  
 Mr. and Mrs. James P. Carty  
 Michael Carty and  
 Linda Brothers  
 Cecilia M. Chandler  
 Allayne and Brian Chappelle  
 Jeffrey Clark  
 William and Louise Cleveland  
 Reese Cloyd  
 Jane Cohen  
 Michael P. Cohen  
 Ann C. Cole  
 Brian Collins  
 John and Sheila Compton  
 James and Ann Connell  
 Dawn Cooke  
 Mr. Damon Cordom  
 Debora J. Cottrell  
 Paul and Barbara Couture  
 Donald J. and Anita P. Cowan  
 Johanna S. Cummings in  
 memory of Ian Cummings  
 Mr. and Mrs. Philip Currie  
 Christian Daubert and  
 Melvin Murphy  
 Zdenek V. David  
 Laurie Davis and Joe Sellers  
 Stephen A. Dean  
 Cynthia J. Decker  
 Lisa and Tony Delity  
 Mr. and Mrs. Michael DeNardo  
 Dr. Terri Dickerson and  
 Colonel (Ret) Kevin Hawkins  
 Antonio Diez and  
 Maria-Manuela S. Diez  
 Althea Dixon  
 Kimberly Dixon

Edward Donahue, III  
 David Dunn  
 Teddie Dyson  
 Jerome Edwards  
 Barbara Elkus and  
 Roger Poore  
 Ann Elliott  
 Evelyn and Barry Epstein  
 Christopher Ernst  
 Ralph and Gwendolyn Everett  
 Catherine Fadel  
 Jill A. Fields  
 Ben Finzel and Mark Pimble  
 Angelo Fiorenza  
 Kathleen Fitzgerald  
 Phyllis and Marc Fleischaker  
 Cathy and Donald Fogel  
 Heather Foley  
 Mr. Gary Fontaine  
 David Frantz  
 Allan D. Friedman  
 Bob Fugate  
 Catherine Gahres and  
 James Woolford  
 Paul Gamble  
 Wynn Gambrell  
 Natwar Gandhi  
 James and Maria Gentle  
 Dr. Kirk Geter  
 Richard Gervase and  
 Stuart Delery  
 Jane Glickman and  
 Charles Sacks  
 Carla Cartwright  
 Maggie Godbold and  
 Steve Bershader  
 James and JoAnn Goedert  
 Ann Lawrence  
 Martha Goldstone  
 Gerry and Alan Graham  
 Ruth B. Gramlich  
 Brad Gray and Helen Darling  
 Madi Green, in memory of  
 Duff Green III  
 Maxine Green  
 Karen T. Grisez  
 Sue Guenther  
 Frank Guzzetta and  
 Paul Manville  
 Dr. Marlene Haffner  
 Daniel and Therisia Hall  
 Betsy A. Harris  
 Brenda Hawkins  
 Laurie Hayden  
 Rachel Hecht  
 Cynthia Heckmann  
 Bert Helfinstein and  
 Margaret Rodenberg  
 Connie Heller  
 Paul R. Henderson  
 Paul Herman and  
 Karen Goldman  
 Jill Herscot  
 Jill Hill and Julie Hill  
 Dorothea Hiltenbrand  
 Jean and Jim Hochron  
 Bill and Marie Hoffman  
 Roger and Neesa Hoskin  
 John and Debra Howard  
 Jerry Hungerman

Heather Huyck  
 David and Kaori Inoue  
 Corrine and Bill Irwin  
 Smyrna N. Jackson  
 Paul Jaikaran  
 Cheryl Janey Calhoun  
 Diane Johnson-Quinn and  
 Vincent Quinn  
 Norm and Anita Johnson  
 Kenneth and  
 Thereese Johnston  
 Kimberly and Tad Johnston  
 James and Susan Jones  
 Trina Jones  
 Olivia and Brian Kane  
 Herschel Kanter  
 Dr. and Mrs. Ronald Karpick  
 Gale Kaufmann  
 Joseph and Jane Keady  
 Michael Kielbiewicz and  
 Barbara Strong  
 Peter Kimmel and  
 Stephanie Jackson  
 Carol A. King  
 Mrs. William Kingsbury  
 Laura Kirkconnell  
 Marie-Therese Klay  
 Mary Lou and Jack Kramer  
 Paul Kung  
 Sarah Kyrouac  
 Mr. and Mrs. James Landberg  
 Carrie and Howard Langsam  
 MK Lanzillotta and Lee Becker  
 Allan and Sondra Laufer  
 Robin Lee  
 Steve Leinwand and  
 Ann Lawrence  
 Paul Levine  
 Jan and Elizabeth Lodal  
 Shirley Loo  
 Lucinda Low and  
 Daniel Magraw  
 Joan Lunney  
 Noreen Lyne  
 Karen T. Grisez  
 Gerald and Madeline Malovany  
 Martin Malsch and  
 Jane Axelrad  
 Harry Manin  
 Hon. John E. Mansfield  
 Margaret Marin  
 Michelle Mason  
 Lou Mayo  
 William McBride and  
 Susan Caporaso McBride  
 Anna Therese McGowan  
 Elizabeth Ann McGrath  
 Margaret McKelvey and  
 William Harkins  
 David McKinney  
 Patricia McMahon  
 Stephen Meyer and  
 Erica Summers  
 Ivan Meyers  
 William Michie  
 Eleanor Miller and Chris Finch  
 Sandy Mitchell  
 Charles and Patricia Moler  
 Judie and Fred Mopsik  
 Bob and Wendy Morris

Stephen Morris and Barry Abel  
 Kent and Dale Morrison  
 Helaine G. Morss  
 Delphine Motley  
 Marilyn L. Muench  
 Hedy Nash and  
 John Wetterau  
 Nick Newlin  
 Sheila Newman  
 Jeremy I. Novak  
 Louise Novitch  
 John Nullmeyer and  
 Donny Malles  
 Michael and Laura Opincar  
 Col and Mrs.  
 Tommy T. Osborne  
 Victoria Chu Pao  
 Charles and Janet Parker  
 Wilson and Deborah Parran  
 Bill and Jenny Pate  
 Ms. Barbara Patocka  
 Michael Perel and  
 Jeanne Kadet  
 Jeanne and Bernie Peters  
 Margaret and Carl Pfeiffer  
 Vijay Ramachandran and  
 Emily Johnson  
 Linda Ravdin and  
 Don Shapero  
 Emil and Judith Regelman  
 Catherine Remijan  
 Maria Farese Rendine  
 Sandra Rennert  
 David and Lynn Rickard  
 Paulette Ricks  
 C.K. Robertson  
 Marietta S. Robinson  
 Denise A. Rollins  
 Gene and Shirley Rosenfeld  
 Sheryl Rosenthal and  
 Marty Bell  
 Carol and Richard Roth  
 Arthur Rubin and  
 Elizabeth York  
 Barbara Sable  
 Mr. and Mrs. John Sacchetti  
 Evelyn Sandground and  
 Bill Perkins, in memory of  
 Frank and Marta Jager  
 Linda B. Schakel  
 Stanley Schurgin  
 Dr. Frederick\* and  
 Peri Schuyler  
 Diane E. Seeger  
 Sandra and David Sellers  
 Erin Shannon  
 Ambassador  
 Mattie R. Sharpless  
 Kathleen Sheehan  
 Sylvia Shenk  
 Stephanie Shipp  
 Luann S. Sinclair  
 Mary and Charles Sjoquist  
 Pamela Brown Smith  
 Kate Snyder  
 Lynne and Jim Sprung  
 Janet Stanley  
 Rochelle Steinberg (Shellie)  
 Donald R. and  
 Dorothy T. Stone

Susan and John Sturc  
 Barbara and David Swan  
 Martha and David Swanson  
 Paula S. Thiede and  
 C. Wakefield Martin  
 Dennis and Rosalind Thomas  
 Deborah Thompson  
 Dr. Adrienne Thompson Brown  
 Mr. Al Thompson and  
 Ms. Carol Michaelsen  
 Patricia Thorne  
 Barry and Helene Toiv  
 Juergen Tooren  
 Rita C. Toscano  
 Darrell Totman  
 Roger and Elizabeth Trangsrud  
 Lyman G. Van Nostrand  
 Steve VernaGeoffrey and  
 Susan Vincent  
 Ms. Maria Wagner  
 Michael Waldman & Linda Coe  
 Howard Walgren and Lee Allen  
 Julie A. Walker  
 Pamela Walker  
 Rudolph and Lillian Watkins  
 Rosemary D. Weller\*  
 Linda and Steve Weltz  
 Drs. Ann and Stephan\* Werner  
 George and Patti White  
 Helen White and  
 Andy Leighton  
 Greg and Mary Whiteman  
 Bernetta and Kevin Williams  
 Jean and Sam Williams  
 Larry and Patti Williams/Pride  
 J. David Willson  
 Beverly and Chris With  
 Beth and John Wright  
 David Young  
 Joel and Pamela Zingeser  
 Victor Zitel

\*Deceased

**Legend:**  
 Ovation Circle  
 \$100,000 and above  
 Founder's Circle  
 \$50,000–99,999  
 Benefactor's Circle  
 \$25,000–49,999  
 Leadership Circle  
 \$15,000–24,999  
 President's Circle  
 \$10,000–14,999  
 Producer's Circle  
 \$6,000–9,999  
 Director's Circle  
 \$3,000–5,999  
 Playwright's Circle  
 \$1,500–2,999  
 Lead: \$700–1,499  
 Supporting Role: \$350–699

We endeavor to provide a complete listing of all donors in the above categories. However, if your name is not listed, please contact the Development Department at 202-600-4177. We are also grateful to the thousands of other contributors to Arena Stage.

# GEICO Philanthropic Foundation

We know the only way to build stronger communities for tomorrow is to invest our time and energy today. We call it our insurance plan for the future and it's a policy we're proud of.



**GEICO** | PHILANTHROPIC FOUNDATION

## THANK YOU

### OUR INSTITUTIONAL DONORS

The vital support Arena Stage receives from many institutions makes our work possible. We thank those institutions who have generously donated \$1,500 or more to our Annual Fund campaign this year. This list represents supporters as of March 15, 2024.

#### OVATION CIRCLE



Anonymous

#### FOUNDER'S CIRCLE



Share Fund

#### BENEFACTOR'S CIRCLE



deLaski Family Foundation  
William S. Abell Foundation

#### LEADERSHIP CIRCLE



Anonymous  
The Theodore H. Barth Foundation, Inc.  
Dallas Morse Coors Foundation for the Performing Arts

#### PRESIDENT'S CIRCLE

Alice Shaver Foundation  
ArentFox Schiff  
BakerHostetler LLP  
Central Parking System  
Clark-Winchcole Foundation  
Comcast NBC Universal  
The Davis/Dauray Family Fund  
The Max and Victoria Dreyfus Foundation, Inc.  
Hattie M. Strong Foundation  
Mars Foundation  
Pritzker Pucker Family Foundation  
S&R Evermay  
Southwest Business Improvement District  
Venable Foundation

#### PRODUCER'S CIRCLE

The Bernstein Companies  
Dimick Foundation  
England Family Foundation  
Friends of Southwest DC  
Graham Holdings Company  
JBG Smith Cares  
The Morgan Fund at Seattle Foundation  
The Nora Roberts Foundation  
Strategic Education  
The Reef Team of TTR Sotheby's

#### DIRECTOR'S CIRCLE

Enterprise Holdings Foundation  
The Howard and Geraldine Polinger Foundation  
Potomac Law Group, PLLC  
Wawa Foundation

#### Legend:

Ovation Circle.....\$100,000 and above  
Founder's Circle.....\$50,000-\$99,999  
Benefactor's Circle.....\$25,000-\$49,999  
Leadership Circle.....\$15,000-\$24,999  
President's Circle.....\$10,000-\$14,999  
Producer's Circle.....\$5,000-\$9,999  
Director's Circle.....\$2,500-\$4,999  
Playwright's Circle.....\$1,500-\$2,499

We endeavor to provide a complete listing of all donors in the above categories. However, if your name is not listed, please contact the Development Department at 202-600-4177.

# THEATER STAFF

Artistic Director .....Hana S. Sharif  
Executive Producer .....Edgar Dobie  
Founding Director .....Zelda Fichandler  
(1924-2016)

Founding Executive  
Director .....Thomas C. Fichandler  
(1915-1997)

Artistic Director  
Emeritus .....Molly Smith

## ARTISTIC DEVELOPMENT

Associate Artistic Director .....Teresa Sapien  
Senior Artistic Producer .....Reggie D. White  
Literary Manager .....Otis C. Ramsey-Zöe  
Artistic Associate, Casting .....Joseph Pinzon  
Artistic Development  
Coordinator .....Melissa Singson  
Dramaturg .....Jocelyn Clarke  
Artistic Development Fellow .....Vanessa Dalpiaz\*  
Current Commissioned Writers .....The Bengsons,  
Lee Cataluna, Kia Corthorn,  
Lady Dane Figueroa Edidi,  
Emily Feldman, Idris Goodwin,  
Caleen Sinnette Jennings, Deepak Kumar,  
Octavio Solis, Vera Starbard, Cheryl West,  
Lauren Yee, Karen Zacarias, Zack Zadek

## ADMINISTRATION

Chief Financial Officer/  
Corporate Treasurer .....Joe Berardelli  
Chief of Staff .....Alison Irvin  
Executive Assistant .....Hannah Viederman  
Interim Director of Finance .....John Monnett  
Accounting Manager .....Chris Murk  
Staff Accountant .....Mark Runion  
Accounting Associate .....Matthew Paige  
Payroll and HRIS Administrator .....Tyra Picazo  
Auditors .....Bormel, Grice & Huyett, P.A.;  
Marcum LLP  
People Management Consultant .....JobMorph  
Capitol Projects Consultant .....RenTec Consulting  
Legal Counsel .....ArentFox Schiff LLP;  
Kramer Levin Robbins Russell

## BUILDING OPERATIONS

Director of Operations .....Kean Windear  
Maintenance Assistant .....Tevin Smith  
Porter .....Lawrence Wise  
Stage Door Attendant .....Kay Rogers

## COMMUNITY ENGAGEMENT

Director of Community  
Engagement .....Sean-Maurice Lynch  
Director of Education .....Ashley Forman  
School Programs Manager .....Rebecca Campana  
Community Programs Manager .....Mauricio Pita  
Training Programs Manager .....Zoë Hall  
Community Engagement  
Programming Coordinator .....Kayla A. Warren

## DEVELOPMENT

Chief Development Officer .....Ryan E. Merkel  
Director of  
Institutional Partnerships .....Shayla Hines-Graham  
Director of Development Operations  
and Events .....Maria Corso  
Director of  
Strategic Philanthropy .....R. Wesley Meekins  
Associate Director of  
Institutional Communications .....Abigail Cady  
Membership Manager .....Lauren Lopaty  
Gift Planning Specialist .....Maya Weil  
Development Operations and  
Events Specialist .....Casey Radner  
Strategic Philanthropy  
Assistant .....Kiana Livingston  
Membership Assistant .....Oscar León  
Development Fellow .....Mina Sollars\*

## GENERAL MANAGEMENT

General Manager .....Alicia Sells  
Associate General  
Manager .....Katharine Templeton  
Company Manager .....Trisha Hein  
Assistant Company Manager .....Bowen Fox  
General and Production  
Management Coordinator .....Jenna Murphy  
General and Company  
Management Fellow .....Alexandra Lopez\*

## AUDIENCE SERVICES, BUSINESS INTELLIGENCE & INFORMATION SYSTEMS, EARNED REVENUE, MARKETING & COMMUNICATIONS

Chief Marketing & Strategy Officer,  
Vice President .....Shonali Burke  
Administrative Coordinator &  
Executive Assistant .....Connor Muldowney

## AUDIENCE SERVICES

Director, Audience Services .....Andrew Rampy  
House Managers .....Ric Birch, Bruce Perry  
Parking .....SP Plus

## BUSINESS INTELLIGENCE & INFORMATION SYSTEMS

Director, Business Intelligence  
and Information Systems .....Rich Johnson  
System Administrator .....Brian Oh  
Business Intelligence and  
Tessitura Lead Consultant .....Sabrina Clark  
IS Help Desk .....Eddie Wieland

## EARNED REVENUE

Director, Earned Revenue .....Isaac Evans  
Earned Revenue Assistant .....Sabrina Zillinger  
Lead Manager, Sales .....Jessica Comstock  
Managers, Sales .....Caroline Hunt,  
Marion Levy Qualls  
Assistant Manager, Group Sales .....Donald Jolly  
Group Sales Associate .....Brandon Ferguson  
Lead Sales Associates .....Hannah Damanka,  
Aaron Hutchens  
Sales Associates .....Mary Ann Anderson-Garlic  
Keshawn Connor,  
Maggie Dishong, Meg Karch,  
Jamie Lazarus, Olivia Martin

Manager,  
Events and Rentals .....Chrystal Vaughan  
Lead Events  
and Rentals Associate .....Trevor Haren  
Events and Rentals Associate .....Aisha Noma  
Lead Manager,  
Retail Operations .....Jody Barasch  
Lead Bartender .....Erika Wallace  
Bartenders .....Edwin Cortez, Greg Gonzales,  
Kaitlyn Sakry, Brad Teague

## MARKETING & COMMUNICATIONS

Director, Marketing  
& Communications .....Elizabeth Hawks  
Associate Director, Marketing  
and Communications .....Ryan Impagliazzo  
Manager, Digital and  
Social Media .....Juliana Avery  
Manager, Email and  
Digital Content .....Clare Lockhart  
Lead Associate,  
Public Relations .....Anastasia St. Hilaire  
Junior Multimedia Designer .....Kristopher Ingle  
Marketing and Media Fellow .....Destiny King\*  
Graphic Design Fellow .....Darien Mitchell\*

## PRODUCTION

Director of Production .....Robert Hand  
Production Manager .....Trevor A. Riley  
Assistant Production  
Manager .....Rachel Crawford

## STAGE MANAGEMENT

Resident Production  
Stage Manager .....Christi B. Spann

## SCENIC

Interim Technical Director .....Travis Smith  
Associate Technical Director .....Clare Cawley  
Charge Scenic Artist .....Li Qiang  
Stage Supervisor .....Hannah Martin  
Carpenters .....Erick Boscana,  
Matthew Grisdela, Julia Junghans,  
Max Marshall, Logan McDowell,  
Frank Miller

## PROPERTIES

Properties Director .....Jennifer Sheetz  
Associate Properties Director .....Jonathan Borgia  
Head Props Artisan .....Niell DuVal  
Props Artisan .....Kyle Handziak  
Props Assistants .... Erica Feidelseit, Alekx Shines

## LIGHTS

Lighting Supervisor .....Paul Villalovoz  
Assistant Lighting Supervisor .....Olivia Rudd  
Electricians .....Scott Folsom, Kelsey Swanson  
Lighting Fellow .....Indigo Garcia\*

## SOUND

Sound and Video Supervisor .....Brian Burchett  
Master Sound and Video  
Technician .....Timothy M. Thompson  
Sound Technicians .....Lex Allenbaugh,  
Alex Cloud, Liv Farley

## COSTUMES

Costume Director .....Joseph P. Salasovich  
Associate Costume Director .....Cierra Coan  
Drapers .....Erika Krause, Carol Ramsdell  
First Hands .....Michele Macadaeg,  
Elizabeth Spilsbury  
Craftsperson .....Deborah Nash  
Wardrobe Supervisors .....Adelle Gresock,  
Alice Hawfield

Wigs, Hair, and  
Makeup Supervisor .....Jaime Bagley

\*2023/24 Class of the Allen Lee Hughes  
BIOC Fellowship Program



# COMING UP NEXT

**“A show that needs  
to be experienced: a blend  
of incredible movement,  
rhythms and singing.”**

—DC Theatre Scene



## **THE MIGRATION: REFLECTIONS ON JACOB LAWRENCE**

BY STEP AFRIKA!

**JUNE 6—JULY 14**

*The Migration* photo by William Perrigen.

