



THE HIGH GROUND

2022/23 SEASON



the mead center
for american theater

COMING SOON TO ARENA STAGE



**ANGELS IN AMERICA,
PART ONE: MILLENNIUM APPROACHES**
BY **TONY KUSHNER**
DIRECTED BY **JÁNOS SZÁSZ**
MARCH 24–APRIL 23



EXCLUSION
BY **KENNETH LIN**
DIRECTED BY **TRIP CULLMAN**
MAY 5–JUNE 25



Photo of Kristolyn Lloyd in *American Prophet* by Margot Schulman.

ORDER TODAY!

ARENASTAGE.ORG | 202-488-3300



the mead center
for american theater

THE HIGH GROUND

TABLE OF CONTENTS

- 5 Artistically Speaking
- 7 From the Executive Producer
- 8 Memories with Molly
- 10 Dramaturgy Note
- 13 Title Page
- 15 Setting / Cast / For this Production
- 17 Bios — Cast
- 19 Bios — Creative
- 23 Bios — Arena Stage Leadership
- 25 Board of Trustees / Young Patrons Board
- 26 Thank You — Full Circle Society
- 27 Thank You — Individual Donors
- 32 Thank You — Institutional Donors
- 34 Theater Staff

ARENA STAGE
1101 Sixth Street SW
Washington, DC 20024-2461
ADMINISTRATION 202-554-9066
SALES OFFICE 202-488-3300
arenastage.org

©2023 Arena Stage.
All editorial and advertising material
is fully protected and must not be
reproduced in any manner without
written permission.

The High Ground Program Book
Published February 10, 2023

Cover illustration by James
Ransome.

PROGRAM BOOK STAFF
Elizabeth Hawks,
Associate Director,
Content and Creative Services

Ryan Impagliazzo,
Associate Director,
Marketing and Media Strategy

ARENA STAGE MISSION

Arena Stage is the voice of American theater resident in our nation's capital. Focused on American artists, our productions are innovative and representative of stories from across the country. We nurture new plays and reimagine classics. We celebrate our democracy and diversity through a multitude of voices in our productions and community engagement programs to inspire people to action. We produce all that is passionate, exuberant, profound, entertaining, deep, and dangerous in the American spirit.



Arena Stage is built on the land of the Piscataway people of the Algonquin-speaking tribes, as well as the lands of the Native American people of the greater Anacostia, Potomac, and Tidewater regions.

ARTISTICALLY SPEAKING

Welcome to the long-awaited premiere of *The High Ground* by Nathan Alan Davis and directed by Megan Sandberg-Zakian.



This premiere is the result of many years of research, writing, and workshoping, as Arena commissioned Nathan back in 2016 as part of the inaugural group of playwrights in the Power Plays cycle. This is the largest commissioning project in Arena Stage's history: an ambitious initiative that births 25 new plays and musicals from a diverse mix of writers, composers, and lyricists over the course of 10 years. With one story per decade beginning with 1776 through the present, *The High Ground* is part of the African-American Voices cycle and represents the 1910s. Seven years later—with a pandemic in between—we will finally experience and enjoy the fruit of Nathan's many years of work with Arena's support.

Nathan knew from the start that he wanted to dig into the then-hidden story of the Race Riots of Tulsa, Oklahoma—a horrific event in 1921 where an upper-class Black neighborhood (nicknamed “Black Wall Street”) was massacred. It was one of those events that had been left out of history books, with most Americans never having heard of it. Part of the Power Plays' mission is to include undiscovered, important stories like this one, and Arena's support of Nathan's research led him to be an expert on the topic. He wrote several major and very different drafts of this play, leading to a television short series on this subject as well.

In the time since Nathan began his commission, the world changed and woke up to hidden histories like the Tulsa Race Massacre. When the 100th anniversary of the event was commemorated in 2021, Nathan was at the forefront of scholars quoted on the topic. I am proud that Arena Stage had a small part to play in bringing this lost history to the public. The play we have today is a beautiful and lyrical story of the massacre—a complex portrait brought to life with one of his favorite collaborators, Megan Sandberg-Zakian.

Nathan and Megan's collaboration has been fabulous. Megan serves as the Artistic Director of Boston Playwrights' Theatre, a home for new works for the stage located on the campus of Boston University, where Nathan currently serves as Director of the MFA Playwriting Program. So, their collaboration is both on and off the stage, and they are helping other artists bring their new work forward!

Many of you may have experienced other Power Plays over the last few years. So far, Arena has produced eight with two more this season. After *The High Ground*, we will premiere *Exclusion* by Kenneth Lin in May. Last season, Arena produced Craig Lucas' *Change Agent* and Eduardo Machado's *Celia and Fidel*. There are currently 10 projects in development with three decades yet to be confirmed. A lot of important stories to be told.

Thank you for being with Arena on this amazing journey through the web of American history and ideas that are part of the past and present.

Molly Smith
Artistic Director

Friendships keep Arena Stage strong.



Today we gather together for the long-anticipated world premiere of Nathan Alan Davis' *The High Ground*, a Power Play commission, in the Arlene and Robert Kogod Cradle. The theater was named the "cradle" because the artistic vision for the space, beautifully designed by Bing Thom under Molly Smith's watchful eye, is to nurture new works. Commissioning and growing new plays is one way that Arena strives to keep our theater field resilient, relying as we do on the support of friends to keep our enterprise running.

Arlene and Robert Kogod understood how creating a space to cradle new work would be essential, and so Arena's deep appreciation for their extremely significant generosity is forever emblazoned by the Kogod name on our theater. The Kogod Cradle name sings as it brings audiences these important new voices.

Additionally, newer friends like Tiffeny Sanchez and Reg Brown have stepped up in a major way to support stories like the one being told by becoming lead sponsors for this production. Show sponsors provide critical resources to sustain our capacity to bring audiences top-notch theater. By sponsoring a brand-new work like *The High Ground*, Tiffeny—who joined Arena's Board of Trustees just in 2021—and Reg demonstrate their appreciation for, and leadership in, cradling new work that speaks to a contemporary audience in real time voices, building on the legacy now shared with the Kogods.

Tiffeny and Reg are not alone in supporting this production. They are generously joined by JMA Solutions, AT&T, Sandy Bieber and Linda Rosenzweig, and PNC. *The High Ground* is also a recipient of the Edgerton Foundation New Play Award, a prestigious award whose support for new plays is critical. Arena is fortunate to have show sponsors throughout our season, and we deeply appreciate the impact of this support on Arena's ability to commission, produce, and present on all our stages.

The broader Arena Stage family lost a dear friend recently, Helga Tarver. Helga, along with her husband Paul, sponsored more than 20 productions during a relationship with Arena that lasted over 60 years. She attended Arena's very first production in 1950, *She Stoops to Conquer*. Helga was a very loyal fan and continued attending Arena productions every year, experiencing new spaces, leadership transitions, and countless shows. She was a member of the Board of Trustees from 1989 to 2008 (when she moved to California to be closer to family). Helga's name is not in the Mead Center by her choice, but her long-time support and love continues to be felt under our roof and beyond.

Whether since 1950 or 2022, it is friendships like these that keep Arena Stage strong and thriving. And whether this is your first or 50th performance with Arena, thank you for being here.

Best,

Edgar Dobie
Executive Producer
President of the Corporation

Proudly Shaping
the Local Landscape

MAKING PLAYS AT ARENA

by Jocelyn Clarke

Molly Smith and I first met in 2002 on a mountainside in Utah, beginning a now two-decade conversation about making new plays. We were both at the Sundance Institute's annual summer Theatre Lab, which offered space and resources to playwrights, directors, and actors to develop new plays and musicals in the middle of artfully curated nature, where the only distractions were a small bar on Robert Redford's resort (the only bar in Provo!), moonlight rides on the ski lift, and the occasional sighting of black bears or an elk.

Whenever Molly and I met over the next few years at Sundance, we discussed new and better ways to support playwrights and develop their plays. She wanted her theater to enable playwrights to make plays in the ways they wanted, with the full resources of the theater available to them—and with the focus on the playwright rather than the play, and on their artistic practice rather than on the production process.

This may not seem like a big deal, until you realize that American theater is run by directors and producers—virtually no theaters are led by playwrights, designers, actors, or dramaturgs. With funding from

the Mellon Foundation, Arena Stage piloted a series of initiatives in 2010, including the Resident Playwrights program, which still enhances the work and livelihoods of playwrights at different theaters around the country, and HowlRound, the free and open online platform for theater artists.

Ten years after our first conversation, Molly asked me to support her Resident Playwrights, and later to expand the way the theater developed its new plays. I invited the commissioned playwrights to lead their own workshops with actors, and to engage fully with their artistic process wherever it might lead them. The Barbara Walton Playwrights' Arena, a year-long program which supports local playwrights and theater makers to create original work and to advance their practice, offered access to the theater's resources as well as to all its productions and

events throughout the year. Last month, a cohort of brand-new playwrights from Howard and Georgetown Universities started its eighth cycle.

In 2016 Molly initiated the largest commissioning cycle in the history of Arena Stage. Twenty-five “Power Plays” will be commissioned to explore historical figures and events from every decade since the founding of the United States. Eight have already received their world premieres. The ninth and tenth, *The High Ground* by Nathan Alan Davis and *Exclusion* by Kenneth Lin, respectively, will close out Molly's 25th, and final, season at Arena Stage—marking a significant milestone of Molly's unprecedented initiative. Arena Stage's commitment to supporting playwrights and to producing new plays continues to evolve and thrive, a living legacy for audiences and artists alike.

HERE. HERE, AGAIN. HERE, AGAIN.

By Otis Ramsey-Zöe, Dramaturg

“Recognition or reknowing or unforgetting is, rather, a particular kind of perception; it is a sensation of seeing for the first time what one has seen many times before. One function of any art is to bring about that moment of unforgetting, when the familiar world suddenly seems strange and new or impossible.”

— Alice Rayner, *Ghosts: Death's Double and the Phenomena of Theatre*

We have been here before. Soldier has been here before. We are here now—here in this theater, yes, but also in the reoccurrence of routinized violence against Black people.

The High Ground, a play by Nathan Alan Davis, in conversation with the Tulsa Race Massacre of 1921, concerns events that are not firmly and solely in the past, events that won't stay decidedly in any rearview mirror, events that resist redaction, and lamentably, events that seem to repeat and to return. The events of the play depict a type of strange loop, one in which violence against Black people is as common in this country as having a U.S. President named James, John, William, or George.

“And living in this order, black people are still doing the work in those innocent scenes. They're doing the work of dying; [...] That's really important work that we're called upon to do and still live under the specter of despotism.”

— Frank B Wilderson,
“The Position of the Unthought”

No one stands on any ground for the first time; rather, it may be the first time for a given individual but not for the ground. Someone, something has been here

before. Perhaps, too, the spirit of what once occurred or what previously stood still lingers. Standpipe Hill, with views to the east towards Tulsa's Greenwood District, provided a gathering post for Black residents to witness the razing of Black Wall Street. *The High Ground* is set atop Standpipe Hill in a present wherein figures and narratives inhabit and slip between time and modes of reality.

“An experience termed past may actually return if the influences have the same balances or proportions as before. Details may vary, but the essence does not change. The day would have the same feeling, the same character, as that day has been described as having before. The image of a memory exists in the present moment.”

— Leslie Marmon Silko, *Almanac of the Dead*

We have been here before. On May 31-June 1, 1921, unabashed White violence razed the Black community of Tulsa. To this day, murky narratives describe the inciting events for the massacre. What we know—if indeed we can say that we know anything—is that on May 30, 1921, a Black teenager named Dick Rowland used the colored-only restroom on the top floor of the Drexel Building in downtown Tulsa.

Sarah Page was the White seventeen-year-old elevator operator in the building. Reports are that Sarah screamed, Dick ran, and a building clerk called the police and claimed that Rowland assaulted Page. For over a century, people have speculated about what happened. Might Dick have tripped and touched Sarah by accident? Was there any encounter at all? Did Sarah actually scream, and who heard it? Again, details are murky. The following day, the *Tulsa Tribune* printed incendiary articles titled “Nab Negro for Attacking Girl in Elevator” and “To Lynch Negro Tonight.” A White mob gathered outside the courthouse, seeking to lynch Rowland. Their fury spread, and after eighteen hours of terror, as many as 300 people were killed and roughly 1,100 residences and dozens of businesses and churches were destroyed.

An extraordinary fact of these events is not that they happened, but that they were omitted from history texts in a pattern, which is the idea that the history of Black people in this country often jumps from Emancipation to Civil Rights. When we meet Soldier in the play, he is steadfast, determined, and vigilant in his determination to remember. Indeed, memory and recollection operate as resistance strategies for him.

“Memory and amnesia always exist side by side and remain part of a political struggle.”

— Andreas Huyssen, *Present Pasts: Urban Palimpsests and the Politics of Memory*

Yet, Nathan's play does not simply chronicle history. The play's structure announces its rejection of the idea that we live apart from history. Nathan has crafted a world in which his meditations, research, history, and the present all

collide in an intimate and theatrical inquiry around the phenomena of Black people in America living in such intimate proximity to death, and in being towards death, and existing in what has been termed “social death.” We need only recall that Tyre Nichols was brutally beaten by Memphis police officers on January 7, 2023 and died three days later on January 10, which also was our first day of rehearsal for *The High Ground*. **We have been here before.**

“The quality of light by which we scrutinize our lives has direct bearing upon the product which we live, and upon the changes which we hope to bring about through those lives. It is within this light that we form those ideas by which we pursue our magic and make it realized.”

— Audre Lorde, *Sister Outsider*

Given the play's topic, an interlocutor asked a question in the form of a statement, “So it's another Black trauma play?” There is a lot to unpack in this question, and I certainly do not wish to disparage any form of storytelling, but *The High Ground* does not focus on the terror and violence inflicted on Black people. Instead, the play acknowledges the antiblack violence that looms large and engages in worldmaking outside of those conditions. Returning to the idea of a loop and being caught in a loop, the play proposes at least two practices as remedy. Recognition—seeing, *really* seeing one another, even if that person appears to be a homeless veteran—is one of the play's suggestions. Another is a four-letter word¹, often uttered but seemingly harder to practice towards others.

¹ Love



We Share Your Dream for the Future

Powering our communities is just the beginning. At Exelon, we consider it our responsibility to improve the quality of life for people in the communities where we live, work and serve. Participation in good corporate citizenship is an integral part of our culture, and we inspire our employees to help everyone succeed.



Arena Stage
Molly Smith, Artistic Director | Edgar Dobie, Executive Producer

PRESENTS

THE HIGH GROUND

BY **NATHAN ALAN DAVIS**

DIRECTED BY **MEGAN SANDBERG-ZAKIAN**

SET DESIGNER
PAIGE HATHAWAY

COSTUME DESIGNER
SARITA FELLOWS

LIGHTING DESIGNER
SHERRICE MOJGANI

ORIGINAL MUSIC AND SOUND DESIGN
NATHAN LEIGH

HAIR AND WIG DESIGNER
TOMMY KURZMAN

DRAMATURG
OTIS RAMSEY-ZÖE

DRAMATURG
JOCELYN CLARKE


CASTING DIRECTOR
JOSEPH PINZON

STAGE MANAGER
CHRISTI B. SPANN*

ASSISTANT STAGE MANAGER
JALON PAYTON*

The High Ground is made possible through generous funding from **Tiffany Sanchez and Reg Brown**.

Additional support is provided by  **JMA**,  **AT&T**, **Sandy Bieber and Linda Rosenzweig**, and  **PNC**.

This project is supported in part by the  **NATIONAL
ENDOWMENT
for the ARTS**.

The High Ground is the recipient of an **Edgerton Foundation New Play Award**.

Arena Stage offers this production in memory of long-time friend and trustee **Helga Tarver**.



Nehassaiu deGannes and Phillip James Brannon for The High Ground. Photo by Tony Powell.

SOCIALLY SPEAKING

We ❤️ seeing your experience at Arena on social media! Give us a follow, like, or tag and we'll 🙌 you back! 😊

TAG US:  /arenastage   @arenastage

TALK ABOUT US: #ArenaHighGround #HighGroundPlay #ArenaStage
#ArenaStageDC #DCTheatre #ACreativeDC #ExperienceDC #VisitDC

SETTING

Standpipe Hill, Tulsa, Oklahoma
The present.

CAST (in order of appearance)

Soldier PHILLIP JAMES BRANNON*
Victoria/Vicky/Vee/The Woman in Black NEHASSAIU deGANNES*
Voice of Dispatcher RACHEL FELSTEIN*
Voice of Cop PETER BOYER*
Male Understudy DeJUAN CHRISTOPHER*
Female Understudy DeSHAWN WHITE*
Supplemental Extra GRACE O. GYAMFI

FOR THIS PRODUCTION

Assistant Director SOLOMON HAILESELASSIE
Fight Coordinator GERRAD ALEX TAYLOR
Intimacy Consultant DANE FIGUEROA EDIDI
Voice and Dialect Coach CAROLINE CLAY
Lighting Assistant HAYLEY GARCIA PARNELL
Production Assistant KELSEY NICOLE JENKINS
Script Production Assistant LAUREN TAYLOR WINSTON
COVID-19 Compliance Officer TREVOR COMEAU
Production Carpenter JESS RICH
Props Technician REGINA VITALE
Light Board Operator SCOTT FOLSOM
Sound Technician ALEX CLOUD
Wardrobe Supervisor ADELLE GRESOCK

The company wishes to thank DeNeen L. Brown.

* Members of Actors' Equity Association



Station 4
Restaurant & Lounge

ARENA STAGE SPECIAL

3 COURSE
THEATRE DINNER
\$39



Available Daily with a Valid
Arena Stage Ticket

Heated Outdoor Available

Start your evening with a delicious
three-course prix fixe menu,
then walk over to see the show.

Save 50% on Bottles of House Wine,
to pair with your dinner!

GET A 10% DISCOUNT ON DINNER ORDERED OFF THE REGULAR A LA CARTE
MENU WHEN YOU PRESENT YOUR ARENA STAGE TICKET!
Offer not valid with Prix Fixe Menu, Wine Special, or any other offers or promotions.

WHO'S WHO

CAST



PHILLIP JAMES BRANNON

(Soldier) This is Phillip's Arena Stage debut. A South Carolina native, but raised in the DMV area, Phillip has looked forward to working at Arena since

he was in high school. He made his D.C. debut in 2011 at Woolly Mammoth in the world premiere of Robert O'Hara's *Boatcandy*. Phillip received his BFA in Acting from DePaul University in Chicago where he began his professional career, doing numerous productions at Steppenwolf, the Goodman, Chicago Shakespeare Theater, and more. He is now a New York resident, living in Harlem for the last 11 years, where has worked non-stop on Broadway and Off-Broadway. He was last seen as Ross, and one of the witches, in *Macbeth* on Broadway. Phillip also works in film and TV—you can currently see him recurring on Apple TV+'s *Servant*. He has also appeared on *The Sinner*, *The Good Fight*, *The Blacklist*, and more. This is his second world premiere with playwright Nathan Alan Davis, the first being another two-hander, *Nat Turner in Jerusalem*, which premiered at New York Theatre Workshop in 2016—one of Phillip's favorite artistic ventures he's ever been on.

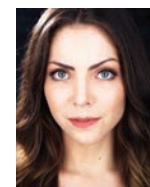


NEHASSAIU deGANNES

(Victoria/Vicky/Vee/The Woman in Black)'s D.C. credits include *Much Ado* (STC), *Gorn Galaxy* (Arena Flash Acts Festival), and *Kings* (Studio Theatre). She

appeared Off-Broadway in the world premieres of *Is God Is* (Soho Rep) and *SEAGULLMACHINE* (La MaMa). Recent regional credits include *Three Musketeers* and *Sweat* (Cleveland Play House); *My Lord, What A Night* (Florida Studio Theatre's rolling world premiere); *Romeo & Juliet* / *Our Town* (Alabama Shakespeare

Festival); *Measure for Measure*, *Intimate Apparel*, and *Or*, (Shakespeare & Co.); *The Last Wife* (WAM); *Marisol* (Luna Stage); *The Convert* (Underground Railway); and *King Lear* (Chicago Shakes). Other highlights include the Canadian premiere of *Never Not Once* (Theatre Aquarius) and a principal season at Stratford Festival of Canada. Nehassaiu appears in the feature film *Equal Standard* and is a published poet. nehassaiu.com



RACHEL FELSTEIN (Voice of *Dispatcher*) is delighted to be back at Arena Stage, following this season's *Holiday* as well as the world premiere of *Right to Be Forgotten*. DC credits

include *Mrs. Warren's Profession* and *Summerland* (Washington Stage Guild), *Pilgrims Musa and Sheri in the New World* (Mosaic Theater Company of DC), *Antigonick* (Taffety Punk), and two self produced pandemic projects, both DC Metro Theater Arts 2021 Staff Picks — *Twelfth Night* (Her Majesty & Sons) and *Night@Newcastle*. New York credits: *This American Life – As Seen on Radio* (BAM), productions with Ensemble Studio Theatre, and *wRETCH – the final concert* (Fresh Fruit Festival). Regional credits: *Fun Home* (Virginia Stage Company), *The Merry Wives of Windsor* (Shakespeare Theatre NJ), and *Man of La Mancha* (National Tour). Instagram: @rfelsiewww. rachelfelstein.com



PETER BOYER (Voice of *Cop*) previously appeared at Arena Stage as Henry in *Holiday*. Notable roles include Ebenezer Scrooge in *A Broadway Christmas Carol* at MetroStage,

Groucho Marx in *Groucho: A Life in Revue* at Wayside Theatre, Dromio of Syracuse in *Comedy of Errors* at Baltimore Shakespeare Festival, Captain Hook in *Tinkerbell* and Captain Braidbeard in *How*

CONSTELLATION
THEATRE COMPANY

INCOGNITO

by Nick Payne

February 10 – March 12

Direction by Allison Arkell Stockman

This fascinating, transatlantic mystery spans the 20th century, interweaving three stories and 21 characters. This dynamic exploration of how biology and memory create our sense of self will captivate your mind and touch your heart.

PURCHASE TICKETS ONLINE OR CALL 202.204.7741
CONSTELLATIONTHEATRE.ORG

1835 14th St NW, Washington, DC 20009

SCAN FOR
TICKETS



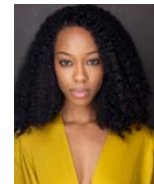
WHO'S WHO

I Became a Pirate at Adventure Theatre, and Charles Dickens in *Discord* and Mr. Praed in *Mrs. Warren's Profession* at Washington Stage Guild. His one-person play *Captain Hook: My Story, or How I Clawed My Way to the Top* was recently produced at Spotlighters Theatre in collaboration with the Baltimore Playwrights Festival, and at Artistic Synergy in Baltimore. www.petersbrain.art



DEJUAN CHRISTOPHER

(*Male Understudy*) This is DeJuan's first appearance at Arena Stage. His most recent theater credits include *Radio Golf* (A Noise Within Theatre), *Seven Guitars* (A Noise Within Theatre), and *Metamorphoses* (A Noise Within Theatre). DeJuan recently starred in the film *Malleable*, which made its debut at Tribeca Film Festival. Twitter: @dejuanchristoph, Instagram: @dejuanchristopher



DESHAWN WHITE (*Female Understudy*) is a Prince George's County native and theater alumni of the University of Maryland Baltimore County who is thrilled to be a part of her

first show at Arena Stage. Her Off-Broadway credits include originating a lead role in *Gong Lum's Legacy* (New Federal Theatre) and the NAACP Award-winning play *The Girls of Summer* (Actors Temple Theatre). Select regional theater credits include *The Mountaintop* (The Hippodrome Theatre), *I Just Stopped by to See the Man* (New Stage Theatre), and *The Metromaniacs* (Shakespeare Theatre of NJ). DeShawn's select film & TV credits include guest-starring roles on *Wu-Tang: An American Saga* (Hulu), *The Deuce* (HBO), and alongside Edward Norton in *Motherless Brooklyn*. Instagram: @deshawn.andrea.white www.deshawnwhite.com



GRACE O. GYAMFI

(*Supplemental Extra*) is making her Arena Stage debut. She graduated from the University of Virginia in 2021 with a B.A. and a minor in Drama. This past

summer she studied at the American Academy of Dramatic Art in Manhattan. Her productions include: *Stickfly* (2019, UVA Drama, Cheryl) and *Flip the Script* (2021, Encore Stage, Red).

CREATIVE TEAM

NATHAN ALAN DAVIS (*Playwright*)'s play *Nat Turner in Jerusalem* received its world premiere at NYTW in the fall of 2016 and was a *New York Magazine* Critic's Pick. In 2015, his play *Dontrell, Who Kissed the Sea* received a Steinberg/ATCA New Play Citation and was produced in five cities in a NNP Rolling World Premiere. His play *The Wind and the Breeze* received the 2016 Blue Ink Playwriting Award and was selected for Cygnet Theatre's inaugural Finish Line Commission. Nathan is a theater lecturer at Princeton University, a Usual Suspect at NYTW, and a 2016 graduate of Juilliard's Lila Acheson Wallace American Playwrights Program. He received his MFA from Indiana University and his BFA from the University of Illinois.

MEGAN SANDBERG-ZAKIAN (*Director*) is a theater director, author, and facilitator with a passion for the development of vital new American plays for the stage and the ear. She is currently the Artistic Director of Boston Playwrights Theatre, an award-winning professional theater dedicated to new work for the stage located on the campus of Boston University. *The High Ground* marks her third world premiere collaboration with Nathan Alan Davis, following *Dontrell, Who Kissed The Sea* (Cleveland Public Theatre)

WHO'S WHO

and *Nat Turner in Jerusalem* (New York Theatre Workshop). Megan is a graduate of Brown University, holds an MFA in Interdisciplinary Arts from Goddard College, and is a proud member of SDC, the union for professional stage directors and choreographers. Her book, *There Must Be Happy Endings: On a Theater of Optimism and Honesty*, is available from The 3rd Thing Press. She lives in Jamaica Plain, MA, with her wife Candice. This one is for Brenda. megansz.com

PAIGE HATHAWAY (Set Designer) is a freelance scenic designer based in the Washington, D.C. area. Previously at Arena, Paige designed the set for *Right to Be Forgotten*. In the D.C. area, Paige has recently designed at Signature Theatre, Round House Theatre, Olney Theatre Center, Theater J, Mosaic Theater, Woolly Mammoth, the Kennedy Center, Folger Theatre, Solas Nua, Imagination Stage, Everyman Theatre, and Studio Theatre. Regionally, Paige has recently designed at The Muny, Cleveland Play House, Arden Theatre, Pioneer Theatre, People's Light, Pennsylvania Shakespeare Festival, and Asolo Rep. Paige received her MFA in Scenic Design from the University of Maryland and her BFA in Scenic Design from the University of Oklahoma. She is a proud member of USA 829. Instagram: @paigehathawaydesign www.paigehathawaydesign.com

SARITA FELLOWS (Costume Designer), born in Freetown, Sierra Leone, her recent works include *Death of a Salesman*, Broadway; *Theater of the Mind*, Denver Center of Performing Arts; *Blues for an Alabama Sky* and *Sweat*, Guthrie Theater; *Seize the King*, Alliance Theatre; *A Bright Room Called Day*, Public Theater; and *Fefu and Her Friends*, American Conservatory Theater. In the dance world, Sarita has worked with choreographers such as Liz Lerman and Edisa Weeks. She received her MFA in Design from Tisch School of the Arts. She was the recipient of a 2020

Lilly Award and was recently awarded Outstanding Achievement in Costume Design at the 2022 National Black Theatre Festival.

SHERRICE MOJGANI (Lighting Designer) recently designed *The Heiress* and *Two Trains Running* (Arena Stage); *The Folks at Home* and *The Garden* (Baltimore Center Stage); *Spunk*, *Ain't Misbehavin'*, and *The Scottsboro Boys* (Signature Theatre); *A Raisin in the Sun*, *Murder on the Orient Express*, *A Few Good Men*, and *Sweat* (Pittsburgh Public Theater); and *Trouble in Mind*, *What You Are*, and *Skeleton Crew* (The Old Globe). Sherrice is an Assistant Professor at George Mason University in Northern Virginia. She holds a BA in Theater Arts from UC Santa Cruz and an MFA in Lighting Design from UC San Diego. smojgani.com

NATHAN LEIGH (Original Music and Sound Design)'s NYC credits include *How To Melt ICE* (Boundless Theatre), *Space Dogs* (MCC), *Our Brother's Son* (Signature), *Original Sound* (Cherry Lane), *Nat Turner In Jerusalem* (New York Theatre Workshop), *The Duchess of Malfi* (Red Bull Theater). Regional credits include *Skeleton Crew* (Huntington Theatre), *Godspell* (Berkshire Theatre Group), *Strangers On A Train* (Stoneham Theatre, IRNE Best Sound Design 2009), *The Hound of the Baskervilles* (Central Square Theatre, IRNE Best Sound Design 2010), and many more. With Kyle Jarrow, Nathan co-created the musicals *Big Money* and *The Consequences*. With Jason Slavick and the Liars & Believers ensemble, Nathan Leigh composed scores for *Song of Songs*, *Icarus*, and *A Story Beyond*. Nathan's latest solo album is *House On Stilts*.

TOMMY KURZMAN (Hair and Wig Designer) Broadway: *Pictures From Home*, *The Collaboration*, *Macbeth*, *Mrs. Doubtfire*, *All My Sons*, *True West*, *Saint Joan*, *My Fair Lady*, *Little Foxes*, *Long Day's Journey*, *Bright Star*, *Fiddler on the Roof*. Off-Broadway: *Little Shop of*

Today is the day to
inspire, delight
and amaze.



We're proud to support Arena Stage and the joy you bring to our community every day.

pnc.com



©2022 The PNC Financial Services Group, Inc. All rights reserved. PNC Bank, National Association. Member FDIC
CON PDF 0618-0106

Horrors-Westside Theatre, MCC, Atlantic, The New Group, The Public, MTC, NWS. Regional: The Huntington, The Muny, Geva Theatre, Resident Ensemble Players, Cape Playhouse, Signature VA, MSM. Associate Hair Designer on over 15 Broadway productions. IG: @tommykurzmanwigs

OTIS RAMSEY-ZÖE (*Dramaturg*) is a care worker, dramaturg, director, theatre arts educator, Literary Manager at Arena Stage, and Lecturer in Dramaturgy at the David Geffen School of Drama at Yale. He has developed new works at such institutions as Sundance Institute, Kennedy Center, Alabama Shakespeare Festival, Playwrights Center, and National New Play Network. He has held posts in Theatre at Northeastern University, Dramaturgy at Carnegie Mellon University, Women's Studies and Honors Humanities at University of Maryland, Performing Arts at American University, and Theatre Arts at Howard University. He was Associate Artistic Director at *banished?* productions, Future Classics Program Coordinator at The Classical Theatre of Harlem, Literary Manager at Center Stage, and an Allen Lee Hughes Senior Fellow at Arena Stage.

JOCELYN CLARKE (*Dramaturg*) is senior dramaturg at Arena Stage in Washington, D.C. He was Theatre Advisor to the Arts Council of Ireland for ten years. As a dramaturg, Clarke has worked with writers such as Katori Hall, Taylor Mac, Lydia Diamond, Abhishek Majumdar, Eduardo Machado, Charles Randolph-Wright, Lisa Kron, Craig Lucas, Carl Hancock Rux, Mary Kathryn Nagle, Tanya Saracho, and Karen Zacarías. He was a script editor on several Irish films, including *Young Offenders*, and was executive story editor on all three seasons of the BBC/RTE TV series *Young Offenders*. He is a writer on the second season of *P-Valley*, Katori Hall's acclaimed TV series for Starz. His new adaptation of Elizabeth Swados' musical *The Beautiful Lady*, will be directed by Anne Bogart at La MaMa

Theatre in New York in May 2023.

JOSEPH PINZON (*Casting Director*) is the founder and creative producer of the contemporary circus company Short Round Productions and its award-winning show *Filament*. With over 25 years of performing experience, he has worked internationally with renowned companies such as Cirque Éloize, Compagnia Finzi Pasca, Cirque du Soleil, and The 7 Fingers. He holds an MS in Arts Leadership from USC, a BA in Psychology from UCLA, and graduated from the National Circus School in Montreal with a specialization in aerial techniques. He was the casting and resident director for Chamäleon Productions (Berlin) and Constellation Immersive (CAA's experiential affiliate). He is also a member of the Creative & Independent Producer Alliance and a founding board member of the American Circus Alliance. You can see him causing chaos on season 6 of *Nailed It!* on Netflix, where (spoiler alert) he is a part of the series' first three-way tie.

CHRISTI B. SPANN (*Stage Manager*) has been working as a stage manager in D.C. since 2011. Favorite Arena Stage productions include *A Raisin in the Sun* and *Junk*. She previously spent 12 seasons on the stage management staff at the Denver Center Theatre Company and has also worked with The Great River Shakespeare Festival in Winona, MN and Virginia Repertory Theatre in Richmond, VA.

JALON PAYTON (*Assistant Stage Manager*) is excited to be making his Arena Stage debut with *The High Ground*. His recent credits in the Baltimore/D.C. area include *The Swindlers: A True-ish Tall Tale*, *The Folks at Home* (Baltimore Center Stage); Ken Ludwig's *Baskerville* (Everyman Theatre); *10 Seconds* (Imagination Stage); *Is Edward Snowden Single?* (Single Carrot Theatre). Other credits include *The Brothers Size* and *A Raisin in the Sun* (American Players Theatre). Jalon

has also stage-managed play readings/workshops with Arena Stage, Taffety Punk Theatre, and Round House Theatre. Jalon is a graduate of the University of Maryland Baltimore County.

ARENA STAGE LEADERSHIP

MOLLY SMITH (*Artistic Director*) has served as artistic director since 1998. Her 40 directing credits at Arena Stage include large-scale musicals, like *Catch Me If You Can*, *Anything Goes*, Disney's *Newsies*, *Carousel*, *Fiddler on the Roof*, *Oklahoma!*, *My Fair Lady*, *The Music Man*, *Cabaret*, *South Pacific*; new plays, like *Celia and Fidel*, *Sovereignty*, *The Originalist*, *Camp David*, *Legacy of Light*, *The Women of Brewster Place*, *How I Learned to Drive*; and classics like *Mother Courage and Her Children*, *A Moon for the Misbegotten*, *The Great White Hope*, and *All My Sons*. Her directorial work has also been seen Off-Broadway at 59E59 in New York, Portland Center Stage, Canada's Shaw Festival, The Court Theatre, The Old Globe, Asolo Repertory, Berkeley Repertory, Trinity Repertory, Toronto's Tarragon Theatre, Montreal's Centaur Theatre and Perseverance Theater in Juneau, Alaska, which she founded and ran from 1979-1998. Molly has been a leader in new play development for over 40 years. She is a great believer in first, second, and third productions of new work and has championed projects, including *Dear Evan Hansen*; *Next to Normal*; *Passion Play*, a cycle; and *How I Learned to Drive*. She led the re-invention of Arena Stage, focusing on the architecture and creation of the Mead Center for American Theater and positioning Arena Stage as a national center for American artists through its artistic programming. During her time with the company, Arena Stage has workshopped more than 100 productions, produced 39 world

premieres, staged numerous second and third productions, and been an important part of nurturing nine projects that went on to have a life on Broadway. In 2014, Molly made her Broadway debut directing *The Velocity of Autumn*, following its critically acclaimed run at Arena Stage. She was awarded honorary doctorates from American University and Towson University. In 2018, she was honored as Person of the Year by the National Theatre Conference and inducted into the Washington DC Hall of Fame. In 2020, she was awarded the Director of Distinction in Cairo, Egypt, from the Academy of Arts. During the COVID-19 pandemic in 2020, she developed the concept for two online films, *May 22, 2020* and *The 51st State*, overseeing the production direction as well as directing pieces within the films. She also spearheaded a variety of other new online content, including a weekly talk show *Molly's Salon*, during the live performance hiatus.

EDGAR DOBIE (*Executive Producer*) Born in Vernon, British Columbia, a village next to the Rocky Mountains (three years after Arena had its first performance in 1950), I am one of five brothers raised by my Dad Edgar, a mechanic and small businessman, and Mom Connie, a telephone operator and union organizer. I am the only Dobie to make a career in theater. Luckily for me, drama was an arts elective I was offered at the tender age of 12 so I hung up my hockey skates and joined the drama class, led by teacher Paddy Malcolme and her fledgling Powerhouse Community Theater after school. By the time I graduated from high school, we volunteers had built ourselves a 200-seat, fully equipped theater on its own piece of land in the center of town and found a sold-out audience for the full season of plays we had on offer. That experience taught me so many lessons about the power of theater to foster collaboration and

share meaningful stories, as well as the public values that attach themselves to building a safe place where everyone is welcome. All those lessons served me well as a managing leader and producer both sides of the border and both sides of the commercial and non-profit theater divide. Arriving here in Southwest with my good wife Tracy and our daughter Greta Lee in 2009 makes me feel like I am well-equipped to do a good job for you all. I am honored to have been recognized for my service to, and leadership of, the Washington, D.C.-area theatre community as a recipient of Theatre Washington's inaugural Victor Shargai Leadership Award in 2022.

This theater operates under an agreement between the League of Resident Theatres and Actors' Equity Association.



The actors and stage managers are members of Actors' Equity Association, the Union of Professional Actors and Stage Managers in the United States.



The scenic, costume, lighting and sound designers in LORT theaters are represented by United Scenic Artists, Local USA-829 of the IATSE.



The Director and Choreographer are members of the **STAGE DIRECTORS AND CHOREOGRAPHERS SOCIETY**, a national theatrical labor union.

Arena Stage is a constituent of the Theatre Communications Group (TCG), the national organization for the American theater.



BOOK YOUR NEXT CELEBRATION AT THE MEAD CENTER

rentals@arenastage.org | 202-600-4040

ARENA STAGE BOARD OF TRUSTEES 2022/23

CHAIR

S. Decker Anstrom

CHAIR-ELECT

Catherine
Guttman-McCabe

VICE CHAIRS

Judith N. Batty
Michele G. Berman
Sander Bieber
Jeffrey M. Busch
Edgar Dobie
Kristen Donoghue
Rick Froehlich
Nicholas Goad
Sue Henry
Vicki J. Hicks
Alethia Jackson
Daniel Korengold
Richard A. Newman
Beth Newburger Schwartz

TRUSTEES

Jan Adams
Andrew R. Ammerman
Linda A. Baumann
Marc Blakeman
Tasha Boone
Celandra Deane-Bess
Joseph P. DiGangi
Jeri Epstein
Richard Feinstein
Stephanie Foster
Dr. Donald Wallace Jones
Ricki Kanter
Elissa Leonard
John Lynham
B. Thomas Mansbach
Ronald A. Paul M.D.
Robert Pincus
Ilene Rosenthal
Gene Samburg
Tiffany Sanchez
David E. Shiffrin
Mignon Smith
Molly Smith
Sheila Stampfli
Michael S. Steele
Michele P. Toth

Shawna Watley
Anita Winsor

HONORARY TRUSTEES

Jim Abdo
Ashok Bajaj
Joanne Barker
Steven R. Bralove
Susan Haas Bralove
Eric Braverman
John Edelmann
Elliot Feldman
Nancy M. Folger
Natwar Gandhi
Patti Herman
Judy Lansing Kovler
Mark Levine
David B.H. Martin
Terry R. Peel
Beverly Perry
Lucia Riddle
Raymond Sczudlo
David Bruce Smith
Richard W. Snowdon
Margaret Tomlinson

LIFE TRUSTEES

Lee G. Rubenstein

YOUNG PATRONS BOARD TRUSTEE

Whitney Hubbard

EMERITUS TRUSTEES

John M. Derrick
Arlene and Robert Kogod
David O. Maxwell
Joan P. Maxwell
Judy Lynn Prince,
in memoriam
Hubert M. Schlosberg

CORPORATE OFFICERS

PRESIDENT

Edgar Dobie

TREASURER

Joe Berardelli

SECRETARY

Alison Irvin

YOUNG PATRONS BOARD 2022/23

The Arena Stage Young Patrons Board seeks to strengthen and support the future of American theater at Arena Stage. The Young Patrons Board supports the artistic mission of Arena Stage by being active ambassadors to the community and arranging opportunities for people under 40 years old to engage with the theater.

MEMBERS

Victoria Clark
Sarah Cohn
Alexandria Edwards
Shoshana Golden
Whitney Hubbard
Ashley Lawrence
Lauren Pate
Emily Rouse
Hillary Stemple
Dr. Adrienne Thompson

To learn more, please contact
youngpatrons@arenastage.org

THEATRE FORWARD

Theatre Forward advances the American theatre and its communities by providing funding and other resources to the country's leading nonprofit theatres. Arena Stage is a proud member of Theatre Forward and a recipient of the Moving Forward Fund and the Educating Through Theatre program. Theatre Forward and its theatres are most grateful to the following funders.

\$100,000+

Bank of America
Hearst Foundations
Citi

\$50,000 - 99,999

The Augustine Foundation
BNY Mellon
Pamela Farr &
Buford Alexander
Goldman, Sachs & Co.
Hearst
MetLife Foundation
Morgan Stanley
Lisa Orberg
Prudential Financial
The Schloss Family
Foundation
Daniel A. Simkowitz &
Mari Nakachi
Wells Fargo

\$15,000 - 24,999

Mitchell J. Auslander &
Kimberlee Abraham
Bloomberg
Paula A. Dominick
Lucy Hardison
Donna Kalajian Lagani
Gretchen Shugart &
Jonathan Maurer
Pfizer, Inc.
TD Bank

\$10,000 - 14,999

Judy R. Bartlett
Steven & Joy Bunson
Dorsey & Whiney LLP
Ernst & Young
Bruce & Tracey Ewing
Roe Green
Marsh & McLennan
Companies, Inc.
The Maurer Family
Foundation
RBC
S&P Global
Travelers

THANK YOU

FULL CIRCLE SOCIETY—ARENA STAGE'S PLANNED GIVING PROGRAM

Arena Stage gratefully acknowledges these individuals who ensure the future of Arena Stage by making a planned gift. These gifts assure that Arena Stage will continue to challenge, educate and entertain audiences, and maintain its excellence in theater nationally, and internationally for generations to come.

Arena can help you accomplish your personal, family and philanthropic goals while benefiting the theater. Supporters who make planned gifts to Arena are invited to join the Full Circle Society and enjoy special benefits.

For more information about planned giving, please contact Maya Weil at 202-600-4158

The following are members as of January 17, 2023.

MEMBERS

Anonymous (11)
Esthy* and Jim Adler
Dr. Bill Santford Ashley
Elinor R. Bacon
Linda A. Baumann
Nan Beckley
Sue Benson
Diane Boehr
Steven Bralove
Dr. Robert and Mary Jo Brenner
Bonnie and Jere Broh-Kahn
Louise Budelis
Donald Burch, III
James C. Burks and Dr. Bette Jane Pappas
John P. Cahill
Ellen MacNeille Charles
Donald J. and Anita P. Cowan
Captain Joan Darrah and Ms. Lynne Kennedy
Martin Alan "Marty" and Belle Negrin Davis
Joseph P. DiGangi
John Edelmans and Jeffrey Love
Vivian B.* and Lisa D. Eggers
Barbara B. Ehrlich
Jeri and Gary Epstein
Skip and Laurette Farmer
Nancy M. Folger
Catherine F. and James F.* Fort, Sr.
Larry Franks and Ellen Berelson
Becky Fredriksson
Dr. Helene C. Freeman
Arlene Friedlander
Rick and Carol Froehlich
George* and Duffy* Ftikas
Steven Garron
Jon K. Gossett and Alex Urdaneta
Bob Gronenberg
Catherine and Christopher Guttman-McCabe
Chris Harris
Betty Hawthorne
Dr. JC Hayward
Vicki J. Hicks
Richard and Pamela Hinds
Sallie L. Holder
Lauren and Glen Howard

Ann Ingram
David Insinga and Robert McDonald
Thomas Jesulaitis
James Johnson and Matthew Shepard
Drs. Susan and Perry Klein
Dr. Seth A. Koch and Barbara Bellman Koch
Patricia and John Koskinen
Justin Latus
Thelma K. Leenhouts
Herb and Dianne Lerner
Carol Ann and Kenneth Linder
John and Patricia Long
John and Lenora Lynham
Sandra L. Mabry
Alison Masters MacTavish
Wells R. McCurdy
Alfred Munzer and Joel Wind
Jeannette Murphy
Paul and Nancy Newman
Marina and David Ottaway
Laura Peebles
Amy Phillips
Robert Pincus
Paul Rose
Hank Schlosberg
Richard Schwartz* and Beth Newburger
Schwartz
Larry Shaw and Richard Freitag
David E. Shiffrin
Dr. and Mrs. Mark Shugoll
Mike and Patti Sipple
Leonard Sirota, Eileen Ivey and Rachel Sirota
Molly Smith and Suzanne Blue Star Boy
Dick and Katie Snowden
Sheila A. Stampfli
Helga Tarver*
Terri L. Tedford
Helene Toiv
Margaret L. Tomlinson
Maya Weil
Val and John Wheeler

BEQUESTS AND GIFTS IN REMEMBRANCE

Estate of Dr. and Mrs. Clement C. Albert
Estate of H. Max and Josephine F. Ammerman
Estate of Jan Ellen Balkin
Estate of Audrey J. Barnett
Estate of Harry J. Boisvein
Estate of Henrietta T. Braunstein
Estate of Dorothy A. Bunevich
Estate of Patricia Carroll
Estate of Albert Chaiken
Estate of Helen G. Coddington
Estate of Marcus Cohn
Estate of Israel and Augusta Convisser
Estate of Camille Cook
Estate of Robert D. Davis Jr. and Henry J. Schatzki
Estate of Mr. William E. Faragher
Estate of Zelda Fichandler
Estate of Donald H. Flanders
In Memory of Helen W. and Felix E. Geiger
Estate of Ann Gibbons
Estate of Ezra Glaser
Estate of George Grizzard
Estate of Giselle Hill
Estate of Joan E. Kain
Estate of Margot Kelly
In Memory of Jean Russ Kern and Jeannette G. Kern
Estate of Herbert A. Lindow
Estate of LaRue R. Lutkins
Estate of Marianne R. Phelps
Estate of Suzy Platt
Estate of Judy Lynn Prince
Estate of Toni A. Ritzenberg
Estate of Gruine Robinson
Estate of Eugene Schreiber
Barbara R. Walton Endowment Fund for New Playwrights
Estate of Eric Weinmann
Estate of Frankie and Jerry Williamson

THANK YOU FOR LEAVING YOUR LEGACY AT ARENA STAGE

We hope you have a wonderful and welcoming night at the theater and thank Trustee **Sheila Stampfli** for her sponsorship of the House Management Team.

THANK YOU

OUR INDIVIDUAL DONORS

Arena Stage gratefully acknowledges the many individuals and families who support the theater's work by contributing to the Annual Fund. These gifts make it possible for the theater to continue presenting high-quality productions and innovative education programs that strengthen the community in which we live.

For more information on the benefits of becoming an Annual Fund contributor, please call the Development Department at 202-600-4177.

The following are members as of January 17, 2023.

OVATION CIRCLE

Anonymous (1)
Decker Anstrom and Sherry Hiemstra
Drs. Elliot J. Feldman and Lily Gardner Feldman
Margot Kelly*
Arlene and Robert Kogod
Judy Lynn Prince*
Toni A. Ritzenberg*
Tiffany Sanchez and Reg Brown
Beth Newburger Schwartz and Richard Schwartz*

FOUNDER'S CIRCLE

Andrew R. Ammerman
Jeff Busch
Mr. and Mrs. Richard W. Snowden

BENEFACTOR'S CIRCLE

Anonymous (1)
Janice Adams
Joanne Barker and the JAKE Foundation
Linda A. Baumann
Sander M. Bieber and Linda E. Rosenzweig
Susan and Steven Bralove
William Caldwell and Michele Toth
Kristen Donoghue and Jon Hacker
Vivian B.* and Lisa D. Eggers
Pam and Richard Feinstein
Mr. and Mrs. David Fisher
Virginia McGehee Friend
Rick and Carol Froehlich
Chris and Catherine Guttman-McCabe
Ann O. Hamilton*
Sue Henry and Carter Phillips
Daniel Korengold and Martha Dippell
The Revada Foundation of the Logan Family
David and Martha Martin
Doris Matsui and Roger Sant
Toni and Ronald Paul
Mr. and Mrs. Robert P. Pincus
Lola Reinsch and the Reinsch Pierce Family Foundation
Ilene and Steven Rosenthal
Sheila Stampfli
Leadership Circle
Anonymous (1)
Judith N. Batty
Michele and Allan Berman
Marc Blakeman
Tasha Boone
Celandra Deane-Bess
Joseph P. DiGangi
Edgar and Tracy Dobie
Jeri and Gary Epstein
Stephanie Foster
Larry Franks and Ellen Berelson
Henock Gebreablak and Nicholas Goad
Patti and Mitchell Herman
Vicki J. Hicks
Alethia Jackson
Dr. Donald Wallace Jones, Dr. Betty Jean Tolbert Jones and Tracey Tolbert Jones
Ricki and Joel Kanter
Sheldon and Audrey Katz
Judy and Peter Blum Kovler Foundation
Herb and Dianne Lerner
Mark T. Lewellyn
John and Lenora Lynham
B. Thomas Mansbach
Richard and Janice Newman

R. Lucia Riddle
Gene Samburg
Peggy and David Shiffrin
Mignon and Kebharu Smith
Molly Smith and Suzanne Blue Star Boy
Hon. Michael Steele
Shawna Watley
Anita Winsor

PRESIDENT'S CIRCLE

Anonymous (1)
David Becker and Leslie Seeman
Eric Braverman and Neil Brown
Ellen MacNeille Charles
Bonnie Feld
Shannon and Randall Kempner
Abby Mandel
The Robert and Natalie Mandel Family Foundation
The Nolan Family Charitable Fund
Craig Pascal and Victor Shargai*
William and Linda Rule
Thalia Sinnamon in memory of Lyn Sinnamon
Peggy and Alec* Tomlinson
Jon and Sandra Willen
Bill and Terry Witowsky
PRODUCER'S CIRCLE
Anonymous (2)
Jim and Mai Abdo
Ronald D. Abramson
Celia and Keith Arnaud
Erin and Derek Arrison
Alan Asay and Mary Sturtevant
Dr. Sharon A. Bennett
James and Priscilla Blum
Deborah Bowles

Lee Calligaro* and Linda Sterlacci
Bonnie C. Carroll and Roy Cooper
Richard H. Cleva
The Manny and Ruthy Cohen Foundation
James and Dorothy Dake
John and Linda Derrick
Kathy and Jody Dreyfuss
John Edelmans and Jeff Love
Nancy M. Folger
Katherine Ann Gardner
Woolf Gross
Susan B. Haight
Daniel Hamilton
Holly Hassett
Meg and John Hauge
Donald E. Hesse and Jerrilyn Andrews
Thomas Jesulaitis and Barrie Seidman
Dr. James and Deborah Karesh
Caroline S. Klemp
Mark Levine and Sara Imershein
Nancy and Dan Longo
Richard and Erin Mills
Alfred Munzer and Joel Wind
Melanie and Larry* Nussdorf
Ann and Terry R. Peel
Beverly Perry
Franklin D. Raines and Denise Grant
Janis Reed and Jack Requa
Margaret Ann Ross
Jean Schiro-Zavela and Vance Zavela
Judi and Richard Sugarman
Suzanne Thouvenelle and Dennis Deloria

YOU MAY PLAN TO LIVE UNTIL YOU'RE 150—AND WE HOPE YOU DO—BUT YOU STILL NEED AN ESTATE PLAN!

Everyone needs an estate plan to ensure their assets benefit the people and causes they value the most. Please consider leaving a gift in your will or designating Arena as a beneficiary of your retirement plan or Donor Advised Fund to help future generations enjoy theater. If you have already included Arena, let us know so we can include you in the Full Circle Society.

For more information, contact **Maya Weil, CAP®, Arena's Gift Planning Specialist at 202-600-4158 or mweil@arenastage.org**

The cast of *The Pajama Game*. Photo by Margot Schulman.



THANK YOU

Virginia D. Weber
Glenn Westley and Jeanne Holzgrefe
Judy and Leo Zickler
DIRECTOR'S CIRCLE
Anonymous (1)
Dr. and Mrs. C. Wrandle Barth
Nan Beckley
Grace and Morton Bender
Constance Bohon MD
Joe and Sue Bredekamp
Bonnie and Jere Broh-Kahn
Arlene Brown and Eugene Bialek
Candice C. Bryant
Blain and Peg Butner
John Chester
Lynne H. Church
Beth Cunningham
Belle N. Davis in memory of Martin "Marty" Davis
Thelma Duggin
Sue Duncan and Leo Fisher
Barbara and David Ehrlich
Peter and Alison Fenn
Lawrence and Joanie Friend
Bill and Linda Garvelink
Michael Greenbaum and Sherry Liebes
Laura Hart
Paul R. Henderson
Liz Hilder and Randy Smith
Theo W. Hodge, Jr., MD and Frederick Eugene Taylor, Jr.
David Insinga and Robert McDonald
Wayne and Susan Jonas
Cal and Barbara* Klausner
Lauren S. Kogod
Leslie S. Kogod
John and Trish Long
Steve Mayer and Vera Oye*
Yaa-Anna
Robert and Joelen Merkel
Dr. Florence K. Millar
Meenakshi and Arvind Nandedkar
Frank and Linda Nutter
Marina and David Ottaway
James T. Parson, Jr.
David H. Pawlik and Susan Albertine
Laura Peebles and Ellen Fingerman
Margaret Pollack and Paula Reed Lynch
Mr. Michael Pollard and Mrs. Penelope Pollard
Robert and Nan Ratner
Joe Reef, Peter Nguyen and the Reef Team of TTR Sotheby's
Massimo and Marilou Righini
Talmadge and Mary E. Roberts
Jill and Rick Robinson
Jeff and Ellen Sandel
David Sayles
Raymond and Deborah Sams Sczudlo
Mr. McAdo Shuler, Jr.
Dr. and Mrs. Gene Simaitis

Sally Simms
Len and Eileen Sirota
Mr. Robert Surovell
Dr. and Mrs. Harvey Sweetbaum
Allison Thomas
Laura L. Tosi
Mary Vavrina
Joan Wills
Richard and Leslie Wojciechowicz
Richie and Jim Wright
Deborah and David Yaffe
Jane Yanulis
Robert and Anne* Yerman
PLAYWRIGHT'S CIRCLE
Anonymous (3)
Lucille A. Bland
David and Judy Bonior
Cynthia Boyer
Susan and Dixon Butler
Wes Callender and Mary Davis
Dr. Myla Carpenter
Morris Chalick
Victoria Clark
Sarah H. Cohn
Wilson Compton
Valerie and John Cuddy
Lorraine Day
The Charles Delmar Foundation
Patricia L. D'Orazio
Dr. Alexandria Edwards, PharmD, MPH
Dr. Gloria Edwards
Skip and Laurette Farmer
Geraldine Feaster and Calvin Bethea*
Susan D. and Howard Feibus
Trudy Fleisher
Mr. and Mrs. Michael Flyer
Robert and Carole Fontenrose
Sallie Forman and Jonah Gitlitz*
Ellen Fox MD
The Henry J. Fox Trust
JoEllen and Martin Frost
Mr. and Mrs. Davis R. Gamble Jr.
Lenue and Barbara Gilchrist
Gregg H. S. Golden
Soshana Golden
Gary Greenwood
Sally W. Gresham
Linda Griggs and Bill Swedish
Carol and Bill Gross
Tim and Norene Guilford
Honorable Robert and Susan Hale
Mr. and Mrs. Peter D. Hart
Patricia Harvey
Lydia Jean Herz and Daniel Felger
Lucia and Fred Hill
Judy Honig and Stephen Robb
Paul and Bonnie Hopler
Whitney Hubbard
John Iwaniec and Tracy Gray
Jean and John Lange
Anne B. Keiser and Doug Lapp
Tuke and Pierce Klemmt

Teresa and Richard Kramer
Ms. Jane Mary Kwass
Mr. and Mrs. William LaChance
Jane Lang
Ashley J. Lawrence
Caroline Lewis
Susan and Dan Mareck
Mark and Marsha Mazz
Alan and Ruth Melvin
Nancy Miron
Anna Katherine Moody
Dee Dodson Morris
Martha Newman
Ray Olson
Lauren Pate
Howard and Dorothy Pedolsky
Dr. and Mrs. Nathaniel Pitts
Lutz Prager and Patricia Lark*
Wayne and Ursula Quin
Deborah Remmers
Margaret Rice and Bill Sette
Bruce and Lori Laitman
Rosenblum
Trina and Lee Rubenstein
Jo Ella Samp
Linda and Arthur Schwartz
Carol Schwartz
Richard and Rosemary Schwartzbard
Laura Smalligan and Eric Sandberg-Zakian
Cecile Srodes
Lisa and Jim Shannon
Mike and Patti Sipple
Annelise and Robert H. Smith
Carl Wayne Smith and Michael Burke
Lawrence and Arlene Spinelli
Dr. Earl P. Steinberg and Claire D. Reade
Hillary M. Stemple
Aileen and Jack Sullivan
Eileen and Michael Tanner
Keith and Jeanie Thackrey
Linda and Stuart Thomsen
Anne Paine and Fowler West
John and Val Wheeler
Jack and Sue Whitelaw
Ken and Dorothy Woodcock
Conrad Woody
Margot Lurie Zimmerman in memory of Paul Zimmerman
STAR
Anonymous (5)
General Clara Adams-Ender
Garland Allen
Jenna and Bill Allen
Dean Amel and Terry Savala
Virginia Anthony
Lawrence and Ruth Axelrod
Cheryl Baird
Lynn J. and Lynne A. Barden
Ann and Mal Barasch
Tom and Loretta Beaumont
Jim Bellas and Kip Fenton
Dava Berkman
Tom Blackburn
Rita Braver and Robert Barnett
Matt Butcher and Liz Pennisi
William and Kathleen Carey

N. Chesser and J.M. Rowe
Debbie and Adam Cohen
Geri and David Cohen
Dr. Rita R. Colwell
Annemargaret Connolly and Kenneth Frank
Ray and Mary Converse
Frederick Corte
Mr. Michael Crosswell
Nancy Dawson
Cynthia J. Decker
Angela Dickey and Patricia Norland
Mrs. Elizabeth Edgeworth
Ann Elliott
Elizabeth Fey
Lorraine Fleming and Harry Parrish
Amy C. Gilbert
John M. Goodman
Janice and Neal Gregory
Bob Gronenberg
Gail Gulliksen
Frank Guzzetta and Paul Manville
Joan Haffey
Ellie and John Hagner
Richard E. Hardy
A. Steven and Janet Hall Graff
Tom Healy and Fred P. Hochberg
Shawn C. Helm and J. Thomas Marchitto
Theodore Hester and Amy Dunbar
Martin and Mooney Hill
Richard and Pamela Hinds
Linda Lurie Hirsch
Lauren and Glen Howard
Dr. and Mrs. David Humm
Harolyn and William Jackson
Jason Johnston
Elizabeth Blair Jones
Dr. and Mrs. Ronald Karpick
Martha L. Kahn and Simeon M. Kriesberg
John Keator and Virginia Sullivan
Patricia and John Koskinen
Richard and Cecilia Larkin
John and Jane Lewis
Carol Ann and Kenneth Linder
Albert L. and Doris M. Lindquist
Shirley Loo
Kenneth C. and Elizabeth M. Lundeen
Vicky Marchand
Ms. Linda Marks and Mr. Rafael V. Lopez
Joanne S. Martin
Lorraine and Craig Martin
Louis Mazawey
Susan Hall McCannell
Charles and Marilyn McMillion
Leigh Method
John and Paula Millian
David Montgomery
Catherine Novelli
Mr. and Mrs. P. David Pappert
George and Andrea Pauli
Scott Pearson

THANK YOU

Mr. Gary Peterson
Paula and William Phillips
Gail Povar and Larry Bachorik
Marjorie Lynne Powell
Dr. and Mrs. Michael B. Price
Carroll Quinn
Barbara Riley
Bill and Donna Roberts
Christopher Robinson
Michael P. Rogan and Susan Schaffer
Gareth Rosenau
Helen Ross
Fern Flanagan Saddler
Alan and Florence Salisbury
Jean Sammon
Gregory Schultz
Laura Shiffrin
Shugoll Research
Bobbi and Larry Shulman
Toby Silverman
Ken Simonson and Jan Solomon
Patricia Stonesifer and Michael Kinsley
Dr. Adrienne Thompson Brown
Barbara Toohill
Annie Simonian Totah
Judge and Mrs. James T. Turner
Roberta K. Van Haeften
Joan and Mark Weiss
Richard and Susan Westin
Cynthia Williams
Jeffrey and Johanna Zinn
LEAD
Anonymous (7)
D. M. Abruzzo
Dr. and Mrs. Nelson Adamson
Lawrence Ausubel
Dr. John and Juanita Bailey
Ronald Bailey and Pamela Friedman
Michael Baker
Paul and Jeanette Barkley
Sue Benson
Robert C. and Elissa B. Bernius
Ann Blackman and Michael Putzel
Gretta Blatner
Dr. and Mrs. Gerald Borsuk
Randall A. Bowman
Anne Boyden
Julianne Brienza
Harold R. Bucholtz
Sandra and Paul Byrne
Leslie Calman and Jane Gruenebaum
Ms. Patricia Carter
Mr. and Mrs. James P. Carty
Henry Chamberlain and Lisa Burns
Gail Chambers and Scott Baker
Wallace Chandler
Kenneth T. Cline
Karen and Joseph Coleman
Drs. Joanne and Frank Crantz
Ingrid Creppell
Mr. and Mrs. Philip Currie
Anne Dammarell

Richard and Emma Dassance
Deanna K. Dawson
Lisa and Tony Delity
John and Sandra Dewey
Cheryl Drago
John Driscoll
Janet Eining
Dr. James Elzy and Mr. Franc O'Malley
Gary Felser
Edmund Fleet
Jay W. Freedman
Richard Gervase and Stuart Delery
Kari Gissel
Mark* and Sara Goldberg
Karen T. Grisez
Nicole Guagenti
Jack E. Hairston Jr.
Robert and Carol Hall
Susan and Allen Hanenbaum
Lars Hanson and Rosanne LeVitre
Chris Harris
Doris Hausser
Ms. Margaret Hennessey
Dorothea Hiltenbrand
Clarence G. Hoop
John and Debra Howard
Drew Huffman
Patricia Jackman and Stephen L. John
Robin Jenkins
Kenneth and Therese Johnston
Olivia and Brian Kane
Dr. Sandra D. Key
L. Kempner
Elaine R. Leavenworth
Elizabeth C. Lee
Steven Leinwand and Ann Lawrence
Eugene J. Leonardi
Marjorie and John Lewis
Dr. and Mrs. Randall J. Lewis
Mrs. E. Kathleen Linville
Gerald and Madeline Malovany
Maligros Mateu
Lou Mayo
Marlene Mayo
Sarah McMeans
MaryAnn Miller
Robin Mockenhaupt and Ralph Popp
Steve Moore
Bob and Wendy Morris
Donald and Lynne Myers
Jeffrey Neal and Kevin Loeffler
William and Louisa Newlin
Mia Nickens
Jane Passman
Stan Peabody
Alan and Andrea Pendleton
Anne E. Peret
Randolph Perry
Randy and Kathy Pherson
Toby Port and Jeffrey Ahl
Mr. and Mrs. Thomas J. Rockford
Dr. Tommie L. Robinson, Jr.

Herbert and Nancy Rosenthal
Dr. Bernard and Louise Rostker
Blair and Sally Ruble
John and Roma Sherman
Dan Snyder and Rory Austin
Emil and Judy Sunley
Dr. Sheila Taube
Elizabeth and Jerome Teles
Ryan Neels Terry and Louis Loh
Alexander B. Thomson and Carol L. Michaelsen
Patricia Thorne
Douglas Trainum in memory of Margaret Laves Trainum
Dr. Carolyn Peoples Veiga
Steve Verna
Ms. Maria Wagner
Roger and Diane Warin
Deborah V. Weinstein
Lawrence Williams
Robert Wilson
SUPPORTING ROLE
Anonymous (21)
Nora Abramson and Dave Nathan
Susan Absher
Anthony Aldwell
Hon. Frank and Mrs. Antoinette Almaguer
Tonia and Scott Anderson
Victoria Arana
Dr. Bill Santford Ashley
Elinor R. Bacon
John and Constance Bails
Marion S. Ballard
Mark and Sara Barnett
Janet and David Batlan
Carolyn and John Beck
Kay Behrensmeyer and Bill Keyser
John and Sylvia Benoit
Carl and Courtney Bergeron
Mr. Samuel Berkowitz
A. David Bernanke
Edward L. Blanton and E. Russell Lynn
Barbara B. Bloch
Sarah Bobbin
Richard and Eleanor Bochner
Amy Bogdon and Robert Kornfeld
Alex Bogdanovsky and Elena Shtern
Vincent and Veronica Boles
Lynette Bouchie
Jan Boyce
Hazel Broadnax
Bari Brooks
Ms. Carolyn Broussard
Lisa Brown
Richard Allen Brown
S. M. Bumbrey
Cynthia Bunton
Susan and Mike Burk
Patricia A. Burke
Avery Burns
Donna Butts and William Libro
John P. Cahill
Fredric and Jane Cantor
Carol Caparosa

Larry and Caroline Carbaugh
Mr. and Mrs. Herb and Ann Carlson
Maria Carmona
Ruth Hughes Carver
Tanja H. Castro
Cecilia M. Chandler
Allayne and Brian Chappelle
Richard G. and Niki K. Chavez
Jo Ann Chin
Jeffrey Clark
William and Louise Cleveland
Rese Cloyd
Nancie S. Coan
Francis and Terry Coates
Jane Cohen
Ann C. Cole
Drs. Houston and Mary Conley
James and Ann Connell
Dawn Cooke
Carl and Nancy Cooper
Paul and Barbara Couture
Donald J. and Anita P. Cowan
Susan M. Crawford
Johanna S. Cummings in memory of Ian Cummings
Robert Cuthriell
Laura and Mike Cutler
L. H. Daniel, MD
Gail Davenport
Stephen A. Dean
Kimberly Dixon
Water B. Doggett III and Joanne Doggett
Edward Donahue, III
Don Douglas and Carolyne Weil*
Brian and Sonja Elmer
Evelyn and Barry Epstein
Ralph and Gwendolyn Everrett
Barbara S. Ewalt
Bonnie and Barry Fields
Mr. and Mrs. Greig Fields
Jill A. Fields
Nicolle M. Fleury
Cathy and Donald Fogel
Heather Foley
Harry Foxwell
Karen L. French
Bob Fugate
Bob and June Gallagher
Paul Gamble
Natwar Gandhi
Mr. and Mrs. James Gentle
Dr. Kirk Geter
Yvette B. Gilmore
Delbert Glover and Linda Grenz
Maggie Godbold and Steve Bershader
James and JoAnn Goedert
Paula S. Goldman
Donald Goldstone
Donna M. Gollnick
Andrew and Sharon Goods
Alan and Gerry Graham
Palmer and Barry Graham
Marjorie Green
Maxine Green
The Greene-Milstein Family Foundation





Bringing art to life

Performers connect us with the artists in our souls. AT&T is honored to support Arena Stage.

Bravo, everyone.

Your passion makes our lives brighter.

© 2022 AT&T Intellectual Property. AT&T and Globe logo are registered trademarks and service marks of AT&T Intellectual Property and/or AT&T affiliated companies. All other marks are the property of their respective owners.

THANK YOU

Sue and Bruce* Guenther
Wilbur Hadden
Dr. Marlene Haffner
Daniel and Therisia Hall
Bonnie and Alan
Hammerschlag
Betsy A. Harris
Elizabeth and Jeffrey Harris
Brenda Hawkins
Kevin Hawkins and Dr. Terri
Dickerson
Laurie Hayden
Rachel Hecht
Cynthia Heckmann
James Heegeman
Bert Helfinstein and Margaret
Rodenberg
Connie Heller
Paul Herman and Karen
Goldman
Jill Herscot
Mr. Jonathan A. Herz
Rick Heuwinkel and Judith
Raak
Phillip Hoagland
Gerald and Harriet Hopkins
Jessica Hirschorn and Henry
Howard, Jr.
Jean and Jim Hochron
Bill and Marie Hoffman
Toby Horn
Roger and Neesa Hoskin
The Katherine Lindsay Howell
Fund
Susan Hunchar
Jerry Hungerman
Heather Huyck
Ann Ingram
Mike and Carol Ireland
William Irwin
Smyrna N. Jackson
Joseph and Anne Jarboe
Victoria Jaycox
Diane Johnson-Quinn and
Vincent Quinn
Kimberly and Tad Johnston
Brendolyn McCarty-Jones and
Leighton Jones
Edward P. Jones
Thelma D. Jones
Joyce E. Jordan
Herschel Kanter
Jane Keady
Joan Kelsch
Michael Kielbiewicz and
Barbara Strong
Juneanne Kimbrough
Peter S. Kimmel and Stephanie
Jackson
Ms. Janet E. King
Mrs. William Kingsbury
Laura Kirkconnell
Kenneth and Carol Doran Klein
Kirsten Knott
Emily Irish Kohler
Mary Lou and Jack Kramer
Paul Kung
Mr. and Mrs. James Landberg
Allan and Sondra Laufer
Drew Lebby and Wendy
Schwartz

Karen Lee and Jim Brown
Robin Lee
Neil Lehrer and Joanne Torrow
Stuart and Brock Lending
Paul Levine
Dave Levy
Carroll and Sherry Little
Margo London and Townsend
Belsor
Nga Lopez
Frank and Liz Lostumbo
Joan Lunney
Noreen Lyne
Pat and Steve MacIntyre
Chris and Christine Magee
Christy Maguire and Matthew
McConkey
Terry Mahn and Gayle Novig
Martin Malsch and Jane
Axelrad
Hon. John E. Mansfield
Elizabeth H. Margosches
Margaret Marin
Carol Marsh
Michelle Mason
Barbara E. Mays
William McBride and Susan
Caporaso McBride
Elizabeth Ann McGrath
Margaret McKelvey and William
Harkins
Cheryl McQueen
Terry and Tom Melo
Stephen Meyer and Erica
Summers
William Michie
Christopher Miles
Sandy Mitchell
Charles and Patricia Moler
Mary Beth Moore and Douglas
Ruby
Judie and Fred Mopsik
Carl and Delila Moravitz
Stephen H. Morris and Jill
L. Clark
Stephen Morris and Barry Abel
Kent and Dale Morrison
Stephen Morrison and Marsha
Lea
Helaine G. Morris
Delphine Motley
Marilyn L. Muench
Jim and Ellen Myerberg
Allen L. Myers
Hedy Nash and John Wetterau
John and Carol Noble
Jeremy Novak and Elaine
Mattaire
Louise Novitch
Fran O'Brien and Stephen Flott
Michael and Laura Opincar
Dr. Jimmy Ortiz
Henry Otto and Judy Whalley
Ms. Barbara Patocka
Michael Perel and Jeanne
Kadet
Judy Perry, Col (USAF Retired)
Margaret and Carl Pfeiffer
Sophia Phillips
Aaron Pina
Barbara and Larry Poe

Jessica Pollner
Ane Powers
Jim and Sue Price
Vijay Ramachandran and Emily
Johnson
Charles* and Madeline Ramsey
Sandra Reed-Bryant
Emil and Judith Regelman
Howard and Emily Reichel
Clyde Relick and Julie Davis
Catherine Remijan
Maria Farese Rendine
Lynn and David Rickard
Paulette Ricks
Lynda Robb
C.K. Robertson
Ann and Vincent Rogers
June and Marvin Rogul
Charles Rohe
Denise A. Rollins
George Roman
Mary Romano
Gene and Shirley Rosenfeld
Sheryl Rosenthal and Marty
Bell
Richard and Carol Roth
Maryann Rozzell
Nuhad D. Ruggiero
Al Russell
Jane and Bruce Ryan
Barbara Sable
Mr. and Mrs. John Sacchetti
Jeffery Sadoris and Adrienne
Fielding
Bill Sandmeyer
Linda B. Schakel
Pauline A. Schneider
Dr. Frederick and Peri Schuyler
Melinda Scott and Dion
Johnson
Diane E. Seeger
Sandra and David Sellers
Benjamin Sessions
Ray and Joanne Shaak
Erin Shannon
Leslie C. and Leonard A.
Shapiro Family Foundation
Ambassador Mattie R.
Sharpless
Kathleen Sheehan
Betsy D. Sherman
Mary Sies and Chris Stark
Patrick Simien and Vicki Moore
Valerie Singer
Mary and Charles Sjoquist
James A. Smailes
Juliette W. Smith
Margo Smith and Gerry Levine
Pamela Brown Smith
Ellen I. Spencer
Lynne and Jim Sprung
Janet Stanley
Shellie Steinberg
Donald R. and Dorothy T. Stone
Thomas Strikwerda and Donna
Stienstra
Susan and John Sturc
Martha and David Swanson
Dennis and Rosalind Thomas
Patricia Thomas

Deborah Thompson
Patti Thorp
Elizabeth Thornhill
Robert and Delabian Thurston
Juergen Tooren
Darrell Totman
John Tyler
Ms. Jennifer A. Vasilloff
Lyman G. Van Nostrand
Geoffrey and Susan Vincent
Jim Vollman and Lee Hobla
Michael Waldman and Linda
Coe
Marnie Walfoort and Cliff
Elgarten
Julie A. Walker
Lillian Watkins
Cameron and Susan
Weiffenbach
Linda and Steve Weitz
Rosemary D. Weller
Tommy and Barbara Wells
Drs. Ann and Stephan* Werner
Dr. Linda Wetzel and Dr. Lon
Berk
Sandra Wheeler
Donna Whitaker
George and Patti White
Helen White and Andy Leighton
Greg and Mary Whiteman
Dr. and Mrs. Robert Whitten
Susan Wiener
Bernetta and Kevin Williams
Jean and Sam Williams
Patricia Page Williams
J. David Willson
David Woodson
Beth and John Wright
David Young
Victor Zitel

*Deceased

Legend:

Ovation Circle
\$100,000 and above
Founder's Circle
\$50,000–99,999
Benefactor's Circle
\$25,000–49,999
Leadership Circle
\$15,000–24,999
President's Circle
\$10,000–14,999
Producer's Circle
\$5,000–9,999
Director's Circle
\$2,500–4,999
Playwright's Circle
\$1,500–2,499
Star: \$1,000–1,499
Lead: \$600–999
Supporting Role: \$300–599

We endeavor to provide a complete listing of all donors in the above categories. However, if your name is not listed, please contact the Development Department at 202-600-4177. We are also grateful to the thousands of other contributors to Arena Stage.

THANK YOU

OUR INSTITUTIONAL DONORS

Arena Stage gratefully acknowledges the many foundations and corporations who support the theater's work by contributing to the Annual Fund. These gifts make it possible for the theater to continue presenting high-quality productions and innovative education programs that strengthen the community in which we live. The following organizations are donors as of January 1, 2023.

OVATION CIRCLE



National Capital Arts & Cultural Affairs Program/
U.S. Commission of Fine Arts
The Bridge Fund — Office of the Deputy Mayor for
Planning and Economic Development

FOUNDER'S CIRCLE



Share Fund

BENEFACTOR'S CIRCLE



William S. Abell Foundation
The deLaski Family Foundation
William H. Donner Foundation

LEADERSHIP CIRCLE



Anonymous
The Theodore H. Barth Foundation, Inc.
Dallas Morse Coors Foundation for the Performing Arts
Hattie M. Strong Foundation

PRESIDENT'S CIRCLE

Alice Shaver Foundation
ArentFox Schiff
BakerHostetler LLP
Central Parking System
Clark-Winchcole Foundation
The Max and Victoria Dreyfus Foundation, Inc.
Global Medical REIT
S&R Evermay
Southwest Business Improvement District
Strategic Education
Theatre Forward
Venable Foundation

PRODUCER'S CIRCLE

The Bernstein Companies
The Davis/Dauray Family Fund
Dimick Foundation
England Family Foundation
Friends of Southwest DC
Graham Holdings Company
Hoffman Madison Waterfront
JBG Smith Cares
Mars Foundation
The Morgan Fund at Seattle Foundation
Samueli Foundation
Strategic Education
The Reef Team of TTR Sotheby's

DIRECTOR'S CIRCLE

Bormel, Grice & Huyett, P.A.
Enterprise Holdings Foundation
Foley & Lardner, LLP
The Howard and Geraldine Polinger Foundation
Potomac Law Group, PLLC
Wawa Foundation

Legend:

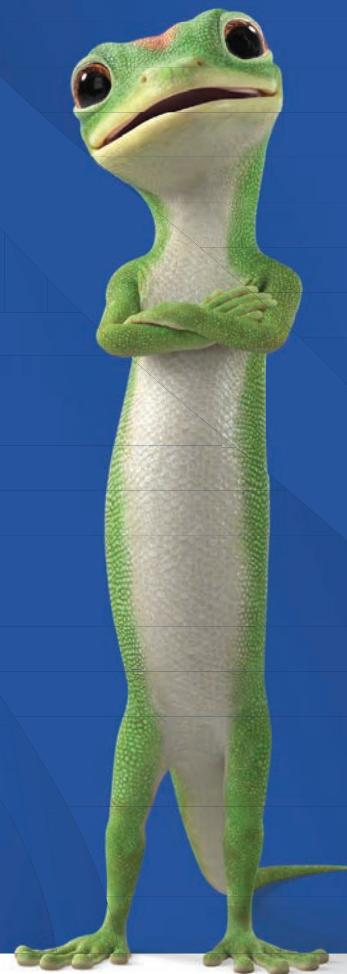
Ovation Circle \$100,000 and above
Founder's Circle \$50,000–99,999
Benefactor's Circle \$25,000–49,999
Leadership Circle \$15,000–24,999
President's Circle \$10,000–14,999
Producer's Circle \$5,000–9,999
Director's Circle \$2,500–4,999

We endeavor to provide a complete listing of all donors in the above categories. However, if your name is not listed, please contact the Development Department at 202-600-4177. We are also grateful to the thousands of other contributors to Arena Stage, whose names space will not permit us to print.

The Arena Stage Costume Shop is
generously supported by, and named for,
**Lola C. Reinsch and the
Reinsch Pierce Family Foundation.**

GEICO Philanthropic Foundation

We know the only way to build
stronger communities for tomorrow
is to invest our time and energy today.
We call it our insurance plan for the future
and it's a policy we're proud of.



GEICO | PHILANTHROPIC FOUNDATION

THEATER STAFF

Artistic DirectorMolly Smith
Executive ProducerEdgar Dobie
Founding DirectorZelda Fichandler
(1924-2016)
Founding Executive
Director..... Thomas C. Fichandler
(1915-1997)

ARTISTIC DEVELOPMENT

Associate Artistic DirectorTeresa Sapien
Dramaturg..... Jocelyn Clarke
Literary Manager.....Otis C. Ramsey-Zoe
Artistic Associate, Casting Joseph Pinzon
Artistic Development
CoordinatorMelissa Singson
Artistic Development FellowZoe Lillis*
Current Commissioned WritersThe Bengsons,
Lee Cataluna, Kia Corthron,
Nathan Alan Davis, Emily Feldman,
Idris Goodwin, David Henry Hwang,
Caleen Sinnette Jennings, Kenneth Lin,
Octavio Solis, Vera Starbard, Lauren Yee,
Karen Zacarias, Zack Zadek

ADMINISTRATION

Chief Financial Officer/
Corporate Treasurer..... Joe Berardelli
Leadership Office Manager..... Alison Irvin
Legal CounselArentFox Schiff LLP;
Kramer Levin Robbins Russell
Controller.....John Monnett
Payroll ManagerLarry Bright
Staff Accountant Chris Murk
Accounting Associate.....Mark Runion
Auditors.....Bormel, Grice & Huyett, P.A.
Interim Director of
Human Resources..... Maria Lee Lewis

MARKETING, COMMUNICATIONS, SALES, EVENT RENTALS, AND AUDIENCE SERVICES

Chief Marketing Officer Shonali Burke
Marketing Department Assistant..... Imani Pugh

CONTENT AND CREATIVE SERVICES

Associate Director, Content
and Creative Services.....Elizabeth Hawks
Multimedia DesignerJeremy Hunter
Manager, Email and
Digital Content..... Clare Lockhart
Graphic Design Fellow.....Kristopher Ingle*

MARKETING AND MEDIA STRATEGY

Associate Director, Marketing
and Media Strategy Ryan Impagliazzo
Manager, Digital and Social Media..... Juliana Avery
Associate, Marketing
and Media Anastasia St. Hilaire
Marketing Fellow..... Jordan Brown*
Media Relations Fellow Bianca Peña*

WEBSITE AND ANALYTICS

Senior Manager, Web Experience
and Innovation Richard Johnson

BOX OFFICE STRATEGY, SALES, AND AUDIENCE EXPERIENCE

Associate Director,
Box Office Strategy.....Marsha Kangas
Managers, Box Office StrategyNathan Boese,
Jessica Comstock,
Marion Levy Qualls
Lead Sales Associate Caroline Hunt
Patron Services Associates..... Jacob Gross,
Colin O'Bryan, Frances Pepper,
Michael Riga, Sabrina Zillinger

Manager,
Events and Rentals.....Chrystal Vaughan
Groups, Events, and
Rentals Associates.....Aisha Noma,
Trevor Haren, Mary Helen Pryal
Visitor Services Manager Jody Barasch
Lead House Manager Andrew Rampy
House Managers..... Ric Birch,
Daniel Ricci
Patron Services Fellow.....Bianca Chauntell Taylor*

COMMUNITY ENGAGEMENT

Director of Community Engagement/
Senior Artistic Advisor..... Anita Maynard-Losh
Director of EducationAshley Forman
School Programs ManagerRebecca Campana
Community Programs ManagerMauricio Pita
Training Programs Manager..... Mari Andrea Travis
Community Engagement
Programs Coordinator Zoe Hall
School Programs Fellow Kayla Warren*
Community Programs Fellow..... Savanna Morgan*

THEATER STAFF

DEVELOPMENT

Director of Development Ryan E. Merkel
Director of Institutional Relations..... Shayla Hines
Director of Development Operations
and EventsMaria Corso
Director of
Strategic Philanthropy.....R. Wesley Meekins
Foundation Relations Manager.....Abigail Cady
Corporate Sponsorships Manager.. Charity Harris
Leadership Giving Manager Hannah Church
Membership Manager Rebecca Barton
Gift Planning Specialist Maya Weil
Development Operations and
Events Specialist..... Casey Radner
Membership Coordinator Lauren Lopaty
Strategic Philanthropy
Assistant.....Kiana Livingston
Development FellowFabian Rodriguez*

GENERAL MANAGEMENT

General ManagerAlicia Sells
Assistant General
Manager Katharine Templeton
Company Managers.....Trisha Hein,
Maddie Newell

General and Production
Management Coordinator..... Jenna Murphy

INFORMATION SYSTEMS AND OPERATIONS

Director of Information Systems
and Operations.....Travis Armbruster
System Administrator Brian Oh
Help Desk Associate.....Edward Wieland
Operations Director.....Paul Reagan
Lead Building Technician.....Keaun Windear
Building Technician..... Larry Serious
PortersTevin Smith, Lawrence Wise
Stage Door Attendant.....Kay Rogers

PRODUCTION

Director of Production.....Robert Hand
Production Manager Trevor A. Riley
Assistant Production
ManagerRachel Crawford

STAGE MANAGEMENT

Resident Production
Stage ManagerChristi B. Spann

SCENIC

Technical DirectorNatalie Bell
Associate Technical Director Zachary Fullenkamp
Scene Shop SupervisorTravis Smith
Charge Scenic Artist.....Li Qiang
Carpenters..... Erick Boscana,
Matthew Grisdela, Julia Junghans,
Hannah Martin, Logan McDowell
Frank Miller, Jess Rich

PROPERTIES

Properties Director Jennifer Sheetz
Associate Properties Director..Lance Pennington
Assistant Properties Director..... Jonathan Borgia
Head Props ArtisanNiell DuVal
Props ArtisanKyle Handziak
Props Assistants Alekx Shines,
Grace Trudeau

LIGHTS

Lighting SupervisorChristopher V. Lewton
Assistant Lighting Supervisor.....Paul Villalovoz
Electricians.....Scott Folsom, Kelsey Swanson
Lighting Fellow.....Hayley Garcia Parnell*

SOUND

Sound and Video SupervisorBrian Burchett
Assistant Sound and
Video Supervisor Byron Hurst
Sound And Video
Shop Technician.....Timothy M. Thompson
Sound Technicians.....Lex Allenbaugh,
Alex Cloud, Andrew Moberley

COSTUMES

Costume Director Joseph P. Salasovich
Associate Costume DirectorCierra Coan
Draper Erika Krause, Carol Ramsdell
First HandsMichele Macadaeg,
Elizabeth "Liz" Spillsbury
Craftsperson.....Deborah Nash
Wardrobe Supervisors Adelle Gresrock,
Alice Hawfield

Wigs, Hair, and
Makeup Supervisor.....Jaime Bagley
Costume Assistant.....Kathleen Crescenzo
Costumes Fellow TyQuria Fountain*

*Allen Lee Hughes Fellow



ANGELS IN AMERICA, PART ONE: MILLENNIUM APPROACHES

BY TONY KUSHNER

DIRECTED BY JÁNOS SZÁSZ

BEGINS MARCH 24

**arena
stage**

the mead center
for american theater